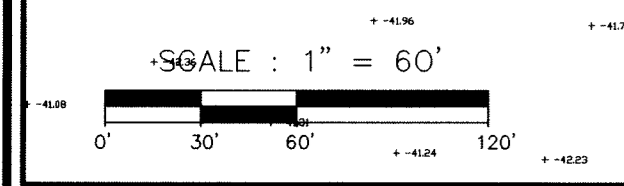
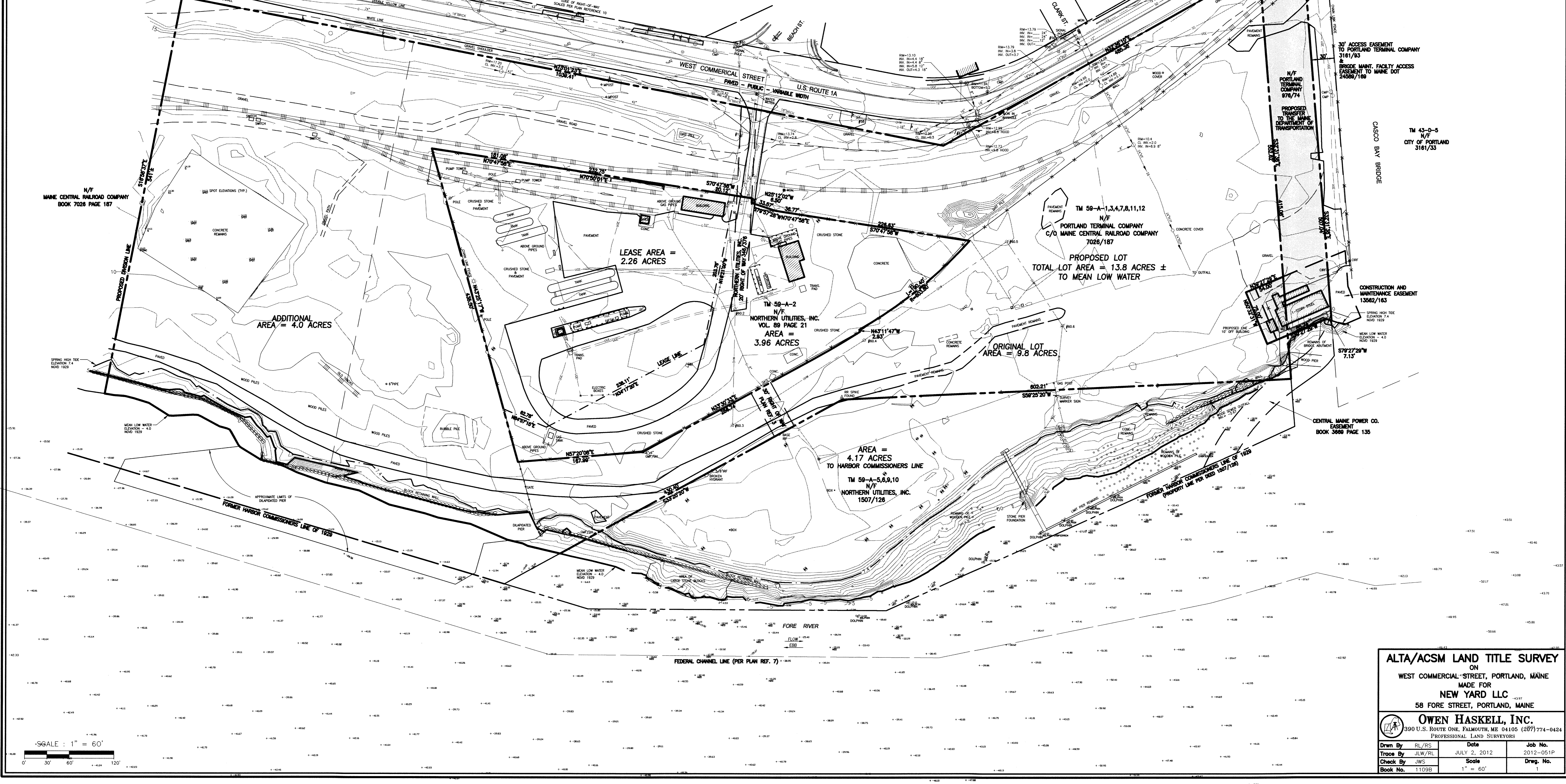
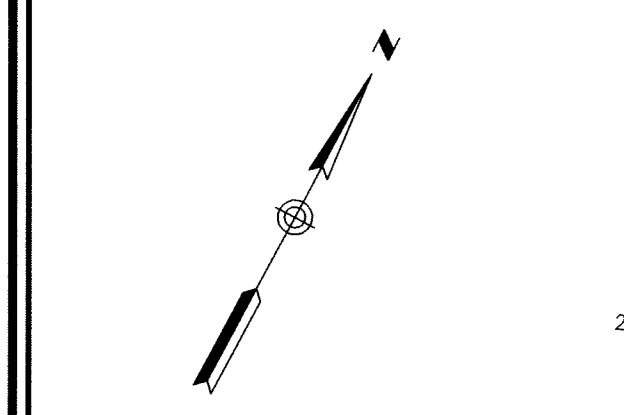


Location Map N.T.S.



SCALE: 1" = 60'

- Legend:**
- IRON PIPE OR ROD FND
 - MONUMENT FOUND
 - GAS VALVE
 - WATER VALVE
 - HYDRANT
 - UTILITY POLE
 - LIGHT POLE
 - MANHOLE
 - CATCH BASIN
 - SIGN
 - FENCE CURB
 - OVERHEAD WIRES
 - UNDERGROUND ELECTRIC
 - TELEPHONE
 - W WATER LINE
 - G GAS LINE
 - SS SANITARY SEWER
 - SD STORM DRAIN
 - 1" CONTOUR
 - MONITORING WELL
 - ELEVATIONS DERIVED FROM SOUNDING ON PLAN REF. 7
 - ELEVATIONS DERIVED FROM SOUNDING BY OWEN HASKELL ON 5/2/12

- Notes:**
1. THE FEDERAL CHANNEL LINE TAKEN FROM PLAN REFERENCE NO. 7 USING COORDINATES IN THE DIGITAL FORMAT OF SAID PLAN.
 2. VERTICAL DATUM IS NGVD 1929 BASED UPON MAINE DEPARTMENT OF TRANSPORTATION DISK L 5 (NGS) RESET 1997 FOUND SET IN CONCRETE BRIDGE ABUTMENT THAT SUPPORTS THE BEACH STREET ON RAMP WHERE IT CONNECTS TO THE CASCO BAY BRIDGE.
 3. BEARINGS ARE MAINE STATE PLANE WEST 1983 DATUM.

- Plan References:**
1. HARBOR LINES, PORTLAND HARBOR, MAINE U.S. ENGINEER OFFICE, BOSTON, MASS. JUNE 30, 1939.
 2. STANDARD BOUNDARY SURVEY SOUTH OF COMMERCIAL STREET, PORTLAND, MAINE FOR CENTRAL MAINE POWER COMPANY, PROPOSED EASEMENT LOCATION ON LAND OF PORTLAND TERMINAL COMPANY & MAINE CENTRAL RAILROAD AND CASCO WHARF AND STORAGE DATED DEC. 10, 1992 REV. 2 JAN. 27, 1993 BY OWEN HASKELL, INC.
 3. STANDARD BOUNDARY & TOPOGRAPHIC SURVEY ON COMMERCIAL STREET, PORTLAND, MAINE MADE FOR NORTHERN UTILITIES, INC. DATED AUGUST 6, 1999 BY OWEN HASKELL, INC.
 4. STANDARD BOUNDARY SURVEY FOR PROPERTY AT PORTLAND INTERNATIONAL MARINE TERMINAL, COMMERCIAL STREET, PORTLAND, CUMBERLAND COUNTY, MAINE OWNED BY CITY OF PORTLAND DATED AUGUST 14, 2002 BY EASTERLY SURVEYING, INC.
 5. PLAN OF LAND ON WEST COMMERCIAL STREET, PORTLAND, MAINE MADE FOR CENTRAL MAINE POWER COMPANY DATED APRIL 24, 2003 BY OWEN HASKELL, INC.
 6. ALTA/ACSM LAND TITLE SURVEY AT WEST COMMERCIAL STREET, PORTLAND, MAINE MADE FOR BINGHAM MCCUTCHEEN LLP DATED DEC. 18, 2006 BY OWEN HASKELL, INC.
 7. PORTLAND HARBOR, PORTLAND, MAINE CONDITION SURVEY, 35 AND 45-FOOT CHANNELS, 45-FOOT ANCHORAGE, 35-FOOT TURNING BASINS, DATED SEPT. 13, 2011 U.S. ARMY CORPS OF ENGINEER NEW ENGLAND DISTRICT SHEET ID. NO. V-105.
 8. STANDARD BOUNDARY SURVEY FOR PROPERTY AT PORTLAND INTERNATIONAL MARINE TERMINAL, COMMERCIAL STREET, PORTLAND, CUMBERLAND COUNTY, MAINE OWNED BY CITY OF PORTLAND DATED AUGUST 14, 2002 BY NORTHEASTERLY SURVEYING, INC.
 9. PORTLAND TERMINAL COMPANY OFFICE OF THE VICE PRESIDENT - ENGINEERING, LAND SALE PLAN, PORTLAND, ME DATED DEC. 30, 2011.
 10. COMMERCIAL STREET DRAINAGE AND TRAFFIC IMPROVEMENTS CIVIL PLAN MADE BY CITY OF PORTLAND, MAINE PUBLIC WORKS DEPARTMENT ENGINEERING SECTION DATED JUNE 2007.

Utility Note:

THE UNDERGROUND UTILITIES SHOWN HAVE BEEN LOCATED FROM FIELD SURVEY INFORMATION AND EXISTING DRAWINGS. THE SURVEYOR MAKES NO GUARANTEES THAT THE UNDERGROUND UTILITIES SHOWN COMPRISE ALL SUCH UTILITIES IN THE AREA, EITHER IN SERVICE OR ABANDONED. THE SURVEY FURTHER DOES NOT WARRANT THAT THE UNDERGROUND UTILITIES SHOWN ARE IN THE EXACT LOCATION INDICATED ALTHOUGH HE DOES CERTIFY THAT THEY ARE LOCATED AS ACCURATELY AS POSSIBLE FROM THE INFORMATION AVAILABLE. THE SURVEYOR HAS NOT PHYSICALLY LOCATED THE UNDERGROUND UTILITIES. CALL 1-800-935SAFE AT LEAST THREE BUSINESS DAYS BEFORE PERFORMING ANY CONSTRUCTION. DUE TO OSHA CONFINED SPACE REQUIREMENTS, ALL INVERTS AND PIPE SIZES MUST BE VERIFIED PRIOR TO ANY CONSTRUCTION.

Surveyor's Certification:

THIS IS TO CERTIFY THAT THIS MAP OR PLAT AND THE SURVEY ON WHICH IT IS BASED WERE MADE IN ACCORDANCE WITH THE 2011 MINIMUM STANDARD DETAIL REQUIREMENTS FOR ALTA/ACSM LAND TITLE SURVEYS, JOINTLY ESTABLISHED AND ADOPTED BY ALTA AND NSPS, AND INCLUDES ITEMS — OF TABLE A THEREOF. THE FIELD WORK WAS COMPLETED ON APRIL 25, 2012.

DATE _____ JOHN W. SWAN, P.L.S. NO. 1038

- Utility Companies:**
- SANITARY SEWER/STORM DRAIN: CITY OF PORTLAND DEPARTMENT OF PUBLIC SERVICES 55 PORTLAND STREET PORTLAND, MAINE 04101 CONTACT: TEL. 207-874-_____
 - WATER: PORTLAND WATER DISTRICT 225 DOUGLASS STREET PORTLAND, MAINE 04102 CONTACT: TEL. 207-761-8310
 - GAS: UNILIT 1075 FOREST AVENUE PORTLAND, MAINE 04103 CONTACT: TEL. 207-797-8002 TEL. 1-866-933-3821

ENCLOSURE: ALTA/ACSM DISK STAMPED L 5 D.O.T. RESET 1997 ELEVATION: 12.87 (NOV 1929)

ALTA/ACSM LAND TITLE SURVEY
ON
WEST COMMERCIAL STREET, PORTLAND, MAINE
MADE FOR
NEW YARD LLC
58 FORE STREET, PORTLAND, MAINE

OWEN HASKELL, INC.
390 U.S. ROUTE ONE, PALMOUTH, ME 04105 (207) 774-0424
PROFESSIONAL LAND SURVEYORS

Drawn By: RL/RS	Date: JULY 2, 2012	Job No.: 2012-051P
Trace By: JLW/RL	Scale: 1" = 60'	Drawn No.: 1
Check By: JWS		
Book No.: 1109B		