

Location Map N.T.S.

- Legend:**
- IRON PIPE OR ROD FOUND
 - MONUMENT FOUND
 - WATER VALVE
 - HYDRANT
 - UTILITY POLE
 - MANHOLE
 - CATCH BASIN
 - SIGN
 - DECIDUOUS TREE
 - FENCE
 - CURBHEAD WIRES
 - UNDERGROUND ELECTRIC
 - TELEPHONE
 - WATER LINE
 - GAS LINE
 - STORM DRAIN
 - 1" CONTOUR
 - MONITORING WELL
 - ELEVATIONS DERIVED FROM SOUNDINGS ON PLAN RECORDED BY OWEN HASKELL ON 5/2/12

- Notes:**
1. THE FEDERAL CHANNEL LINE TAKEN FROM PLAN REFERENCE NO. 7 USING COORDINATES IN THE DIGITAL FORMAT OF SAID PLAN.
 2. VERTICAL DATUM IS NGVD 1929 BASED UPON MAINE DEPARTMENT OF HIGHWAY CONSTRUCTION SURVEYING POINT 1000.00 ON THE CASCO BAY BRIDGE. ADJUSTMENT THAT SUPPORTS THE BEACH STREET ON RAMP WHERE IT CONNECTS TO THE CASCO BAY BRIDGE.
 3. BEARINGS ARE MAINE STATE PLANE WEST 1983 DATUM.

- Plan References:**
1. HARBOR LINES, PORTLAND HARBOR, MAINE U.S. ENGINEER OFFICE, BOSTON, MASS. JUNE 30, 1939.
 2. STANDARD BOUNDARY SURVEY SOUTH OF COMMERCIAL STREET, PORTLAND, MAINE FOR CENTRAL MAINE POWER COMPANY, PROPOSED EASEMENT LOCATION ON LAND OF NORTHERN UTILITIES, INC. DATED DEC. 10, 1992 REV. 2 JAN. 27, 1993 BY OWEN HASKELL, INC.
 3. STANDARD BOUNDARY & TOPOGRAPHIC SURVEY ON COMMERCIAL STREET, PORTLAND, MAINE MADE FOR NORTHERN UTILITIES, INC. DATED AUGUST 6, 1999 BY OWEN HASKELL, INC.
 4. STANDARD BOUNDARY SURVEY FOR PROPERTY AT PORTLAND INTERNATIONAL MARINE TERMINAL, COMMERCIAL STREET, PORTLAND, CUMBERLAND COUNTY, MAINE OWNED BY CITY OF PORTLAND DATED AUGUST 14, 2002 BY EASTERLY SURVEYING, INC.
 5. PLAN OF LAND ON WEST COMMERCIAL STREET, PORTLAND, MAINE MADE FOR CENTRAL MAINE POWER COMPANY DATED APRIL 24, 2003 BY OWEN HASKELL, INC.
 6. ALTA/ACSM LAND TITLE SURVEY AT WEST COMMERCIAL STREET, PORTLAND, MAINE MADE FOR BINGHAM MCCUTCHEEN LLP DATED DEC. 18, 2006 BY OWEN HASKELL, INC.
 7. PORTLAND HARBOR, PORTLAND, MAINE CONDOMINIUM SURVEY, 15 AND 45-FOOT CHANNELS, 45-FOOT ANCHORAGE, 35-FOOT TURNING BASINS, DATED SEPT. 13, 2011 U.S. ARMY CORPS OF ENGINEER NEW ENGLAND DISTRICT SHEET ID. NO. V-105.
 8. STANDARD BOUNDARY SURVEY FOR PROPERTY AT PORTLAND INTERNATIONAL MARINE TERMINAL, COMMERCIAL STREET, PORTLAND, CUMBERLAND COUNTY, MAINE OWNED BY CITY OF PORTLAND DATED AUGUST 14, 2002 BY NORTHEASTERLY SURVEYING, INC.
 9. PORTLAND TERMINAL COMPANY OFFICE OF THE VICE PRESIDENT - ENGINEERING, LAND SALE PLAN, PORTLAND, ME DATED DEC. 30, 2011.
 10. COMMERCIAL STREET DRAINAGE AND TRAFFIC IMPROVEMENTS CIVIL PLAN MADE BY CITY OF PORTLAND, MAINE PUBLIC WORKS DEPARTMENT ENGINEERING SECTION DATED JUNE 2007.

Utility Note:

THE UNDERGROUND UTILITIES SHOWN HAVE BEEN LOCATED FROM FIELD SURVEY OF THE UNDERGROUND UTILITIES SHOWN COMPRISE ALL SUCH UTILITIES IN THE AREA, EITHER IN SERVICE OR ABANDONED. THE SURVEY FURTHER DOES NOT INDICATE THE DEPTH OR CHARACTER OF ANY UTILITIES SHOWN AND LOCATION AS POSSIBLE FROM THE INFORMATION AVAILABLE. THE SURVEYOR HAS NOT PHYSICALLY LOCATED THE UNDERGROUND UTILITIES. CALL 1-800-NOSAFETY AT 1-800-662-7273 FOR INFORMATION ON THE REQUIREMENTS FOR UTILITIES TO OSHA CONFINED SPACE REQUIREMENTS. ALL INVERTS AND PIPE SIZES MUST BE VERIFIED PRIOR TO ANY CONSTRUCTION.

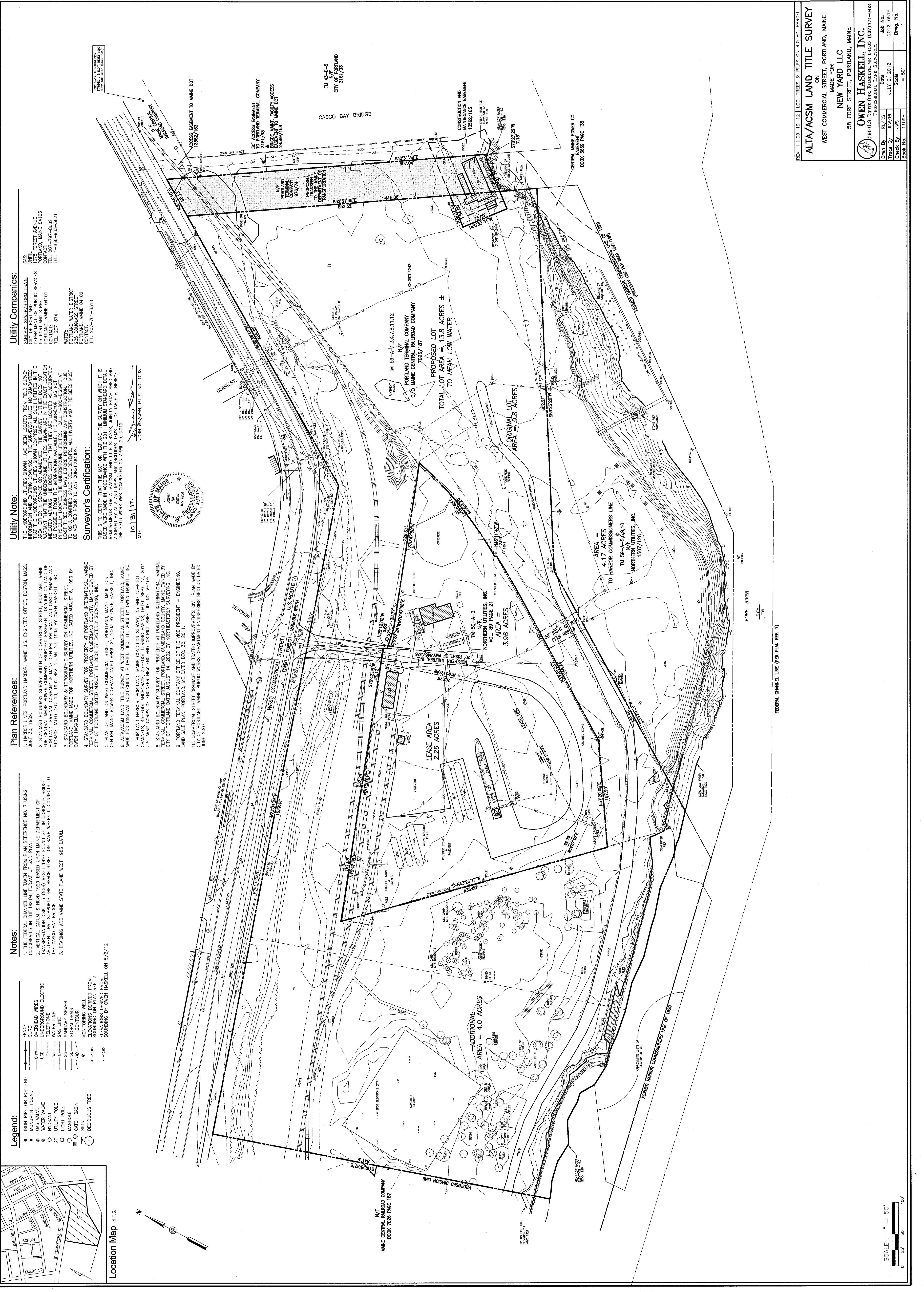
Surveyor's Certification:

THIS IS TO CERTIFY THAT THIS MAP OR PLAN AND THE SURVEY ON WHICH IT IS BASED WERE MADE IN ACCORDANCE WITH THE 2011 MINIMUM STANDARD DETAIL REQUIREMENTS FOR ALTA/ACSM LAND TITLE SURVEYS, JOINTLY ESTABLISHED AND ADOPTED BY THE MAINE BOARD OF SURVEYORS AND THE BOARD OF REGISTERED PROFESSIONAL ENGINEERS OF THE STATE OF MAINE. THE FIELD WORK WAS COMPLETED ON APRIL 25, 2012.

Utility Companies:

GAS:
SANTIMERY, SEMERZ/SORUM, BRAN: 1075 FOREST AVENUE, PORTLAND, MAINE 04103
CONTACT: 797-8002
TEL: 1-866-933-3821

WATERS:
PORTLAND WATER DISTRICT
225 DOUGLASS STREET
PORTLAND, MAINE 04102
TEL: 207-781-8310



REV. 1 09-19-12 LOC. TREES & PILES ON 4.0 AC. PARCEL

ALTA/ACSM LAND TITLE SURVEY
ON
WEST COMMERCIAL STREET, PORTLAND, MAINE
MADE FOR
NEW YARD LLC
58 FORE STREET, PORTLAND, MAINE

OWEN HASKELL, INC.
890 U.S. ROUTE ONE, FALMOUTH, ME 04105 (207) 774-0424
PROFESSIONAL LAND SURVEYORS

Drawn By: RL/RS Date: JULY 2, 2012
Trace By: JWS Scale: 1" = 50'
Check By: JWS Dwg. No.: 1
Book No.: 1109B

