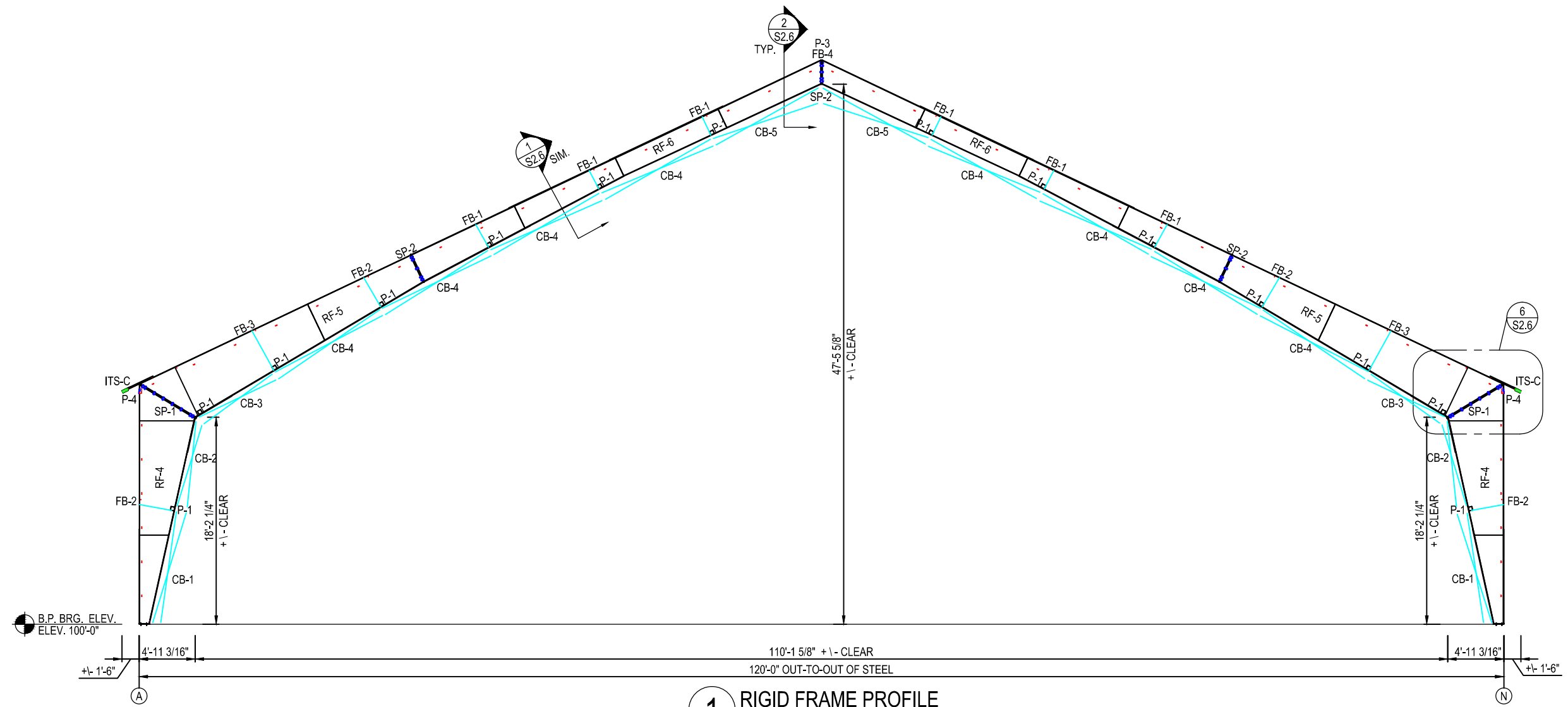


| SPLICE BOLT TABLE | | | | | | |
|-------------------|-----|-----|-----|------|-------|--------|
| MARK | QTY | | | TYPE | DIA | LENGTH |
| | TOP | BOT | INT | | | |
| SP-1 | 2 | 2 | 12 | A325 | 1.000 | 3.25 |
| SP-2 | 2 | 2 | 6 | A325 | 1.000 | 3.25 |

* ALL A325 BOLTS TO RECIEVE (2) WASHERS

| FRAME WEIGHT TABLE | | |
|--------------------|-------------|--------|
| RF-4 | 1190.0 (x2) | 2380.0 |
| RF-5 | 1687.2 (x2) | 3374.4 |
| RF-6 | 1505.7 (x2) | 3011.4 |
| TOTAL | 4382.9 (x2) | 8765.8 |

| MEMBER TABLE | | |
|------------------------|-----------------|--------------|
| RIGID FRAME ELEVATIONS | | |
| MARK | PART | LENGTH |
| P-1 | HSS 4x4x14ga | 19'-11 1/16" |
| P-3 | 4" ROUND x 11ga | 19'-10" |
| P-4 | HSS 5x2x11ga | 19'-10 1/2" |
| CB-1 | 1/2" CBL | 266" |
| CB-2 | 1/2" CBL | 254" |
| CB-3 | 1/2" CBL | 252" |
| CB-4 | 3/8" CBL | 268" |
| CB-5 | 3/8" CBL | 266" |
| FB-1 | L1.5x1.5x1/8" | 3'-0" |
| FB-2 | L2x2x3/16" | 5'-0" |
| FB-3 | L2.5x2.5x3/16" | 7'-0" |
| FB-4 | L1.5x1.5x1/8" | 3'-0" |
| ITS-C | HSS 6x2x11ga | 19'-8 9/16" |



1 RIGID FRAME PROFILE
FRAME LINES 2-4, 6-8 @ BAYS 2,3,6 & 7



NEW YARD LLC
120'-0" x 160'-6"
PORTLAND, ME

Legacy Building Solutions
19500 County Rd 142
South Haven, MN 55830
p. 320-259-7126

THIS DRAWING AND THE INFORMATION HEREON, REMAINS THE PROPERTY OF LEGACY BUILDING SOLUTIONS. IT IS PROVIDED FOR ERRECTING THE BUILDING DESCRIBED IN THE APPLICABLE PURCHASE ORDER AND SHALL NOT BE MODIFIED, REPRODUCED OR USED FOR ANY OTHER PURPOSE WITHOUT PRIOR WRITTEN APPROVAL OF LEGACY BUILDING SOLUTIONS.

PATENT PENDING

RIGID FRAME PROFILE
FRAME LINES 2-4,6-8 @ BAYS 2,3,6&7

| DRAWING SET: | DATE: |
|-------------------|------------|
| △ STAMPED DRAWING | 10-07-2013 |
| △ | |
| △ | |
| △ | |

| | |
|--------------|-------------------|
| Project No.: | 13-025 |
| Date: | 10-07-2013 |
| Drawn By: | AMH |
| Checked By: | INSERT CHECKED BY |

Sheet Number:

S2.2

SCALE: 3/32" = 1'-0"