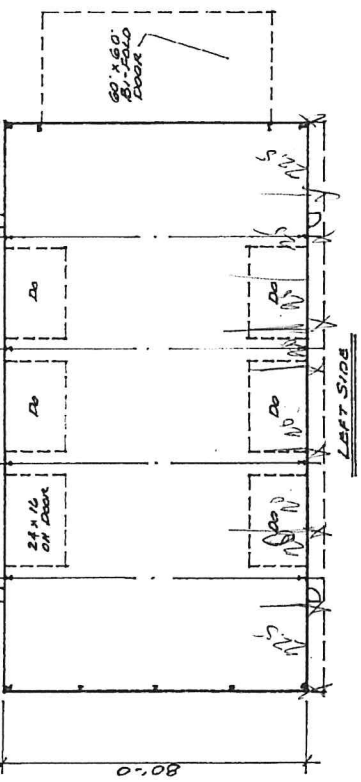


RIGHT SIDE

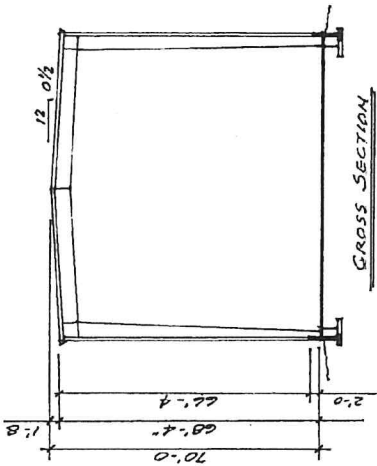
5 BAYS @ 30'-0" = 150'-0"

4" x 150' EXTERIOR CANOPY (BOTH SIDES)

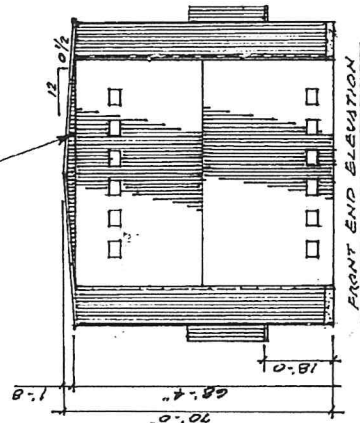


BACK END

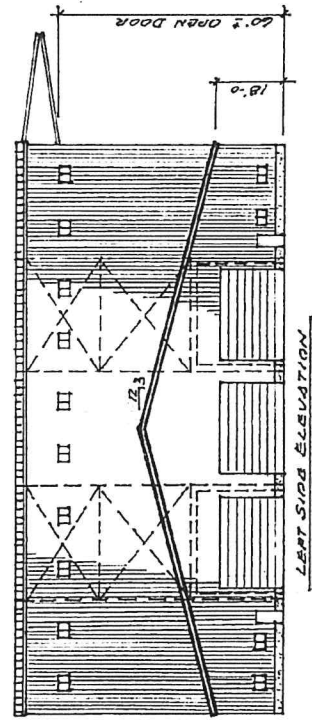
81'-0" DOOR SHOWN AT HEIGHT OF 68'-0" FOR CLEAR OPENING HEIGHT OF 60'-0"



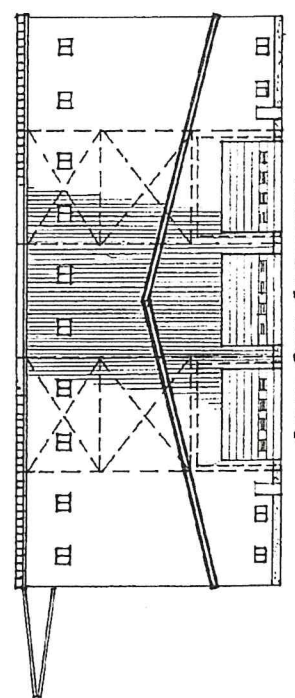
CROSS SECTION



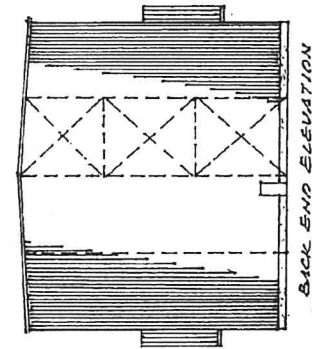
FRONT END ELEVATION



LEFT SIDE ELEVATION



RIGHT SIDE ELEVATION



BACK END ELEVATION

PROPOSED PAINT SHOP BUILDING FOR:  
**CANAL LANDING**  
 180 WEST COMMERCIAL STREET  
 PORTLAND, MAINE 04101

BY:  
 IRISHMAN INDUSTRIES, INC.  
 12-20-12 JAJ