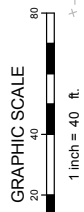


- PLAN REFERENCES**
- BOUNDARY AND TOPOGRAPHIC SURVEY WEST COMMERCIAL STREET, PORTLAND, CUMBERLAND COUNTY, MAINE, MADE FOR INTB AND THE MAINE DEPARTMENT OF TRANSPORTATION BY OWEN HASKELL, INC. DATED APRIL 4, 2014.
 - PLAN TITLED "STATE OF MAINE DEPARTMENT OF TRANSPORTATION RIGHT OF WAY MAP" AND "ACQUISITIONS" BY OWEN HASKELL, INC. DATED APRIL 4, 2014.
 - PLAN SET TITLED "STATE OF MAINE DEPARTMENT OF TRANSPORTATION" CITY OF PORTLAND, CUMBERLAND COUNTY, PORTLAND INTERNATIONAL MARINE TERMINAL - EXISTING LAND OWN AND CONNECTING CORRIDOR CONNECTION WITH 0268920.
 - PORTLAND HARBOR, PORTLAND, ME AFTER DREDGE SURVEY - 35 FOOT CHANNEL AND TURNING BASINS BY THE U.S. ARMY CORPS OF ENGINEERS. SHEETS V-101 THROUGH V-104, DATED APRIL 18, 2014.

STRUCTURES WITHIN PROJECT TO BE CONSTRUCTED IN ACCORDANCE WITH PORTLAND CITY CODE, SECTION 14-49-B FLOOD-PLAIN MANAGEMENT.

HIGH ANNUAL TIDE (HAT) = ELEV 7.4
 HIGH ANNUAL TIDE (SPRING HIGH TIDE) ELEVATION 7.4 (NGVD 29)
 MEAN HIGH WATER = ELEV 4.72
 MEAN LOW WATER = ELEV -4.28



STANTEC CONSULTING SERVICES INC.
 482 PAYNE ROAD SCARBOROUGH COURT
 SCARBOROUGH, MAINE 04074
 WWW.STANTEC.COM

DRAWN: DED	DATE: 07.06.16
DESIGNED: SRB	SCALE: 1" = 40'
CHECKED: SRB	JOB NO.: 195350729
FILE NAME: 309104-SITE LAYOUT	

CANAL LANDING
 PROPOSED SHELL STORAGE AND
 PIER / FLOAT EXPANSION
 WAYNFLETE SCHOOL c/o ECO-ANALYSTS

FIGURE
2