

Prepared For:  
 Canal Landing / New Yard LLC  
 100 West Commercial St. Portland, ME

Consulting Engineer:

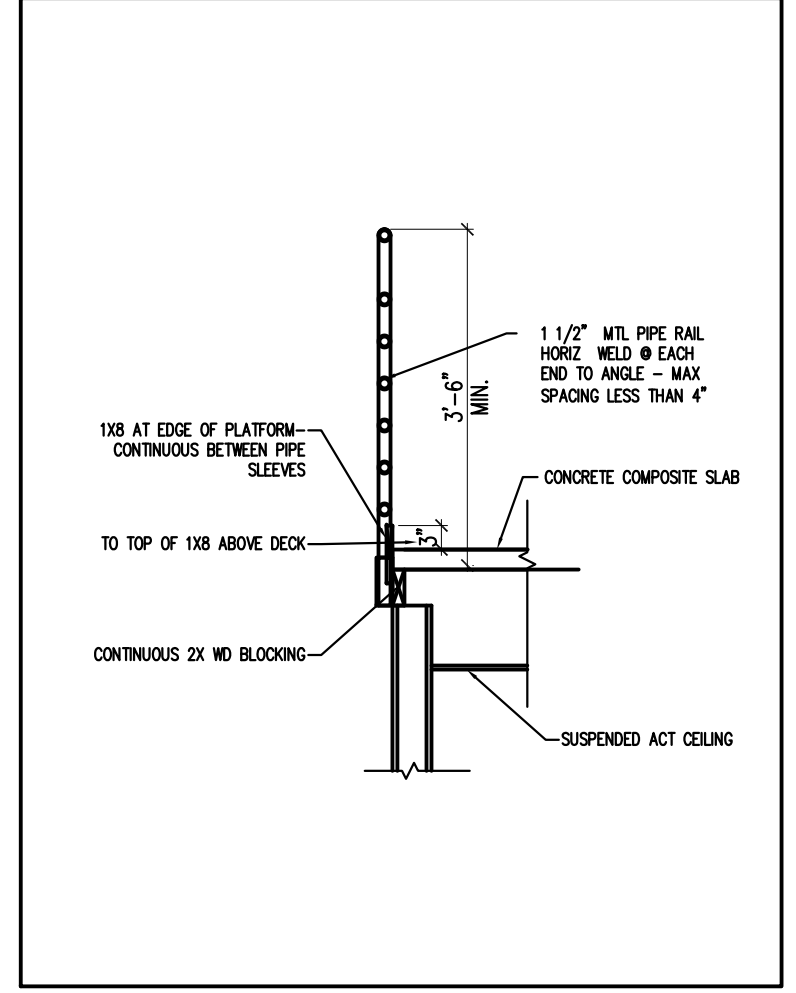
Architect:  
**ARCHETYPE** architects  
 48 Union Wharf Portland, Maine 04101  
 (207) 772-6022 Fax (207) 772-4056

Project:  
 Canal Landing / New Yard  
 100 West Commercial St. Portland, ME

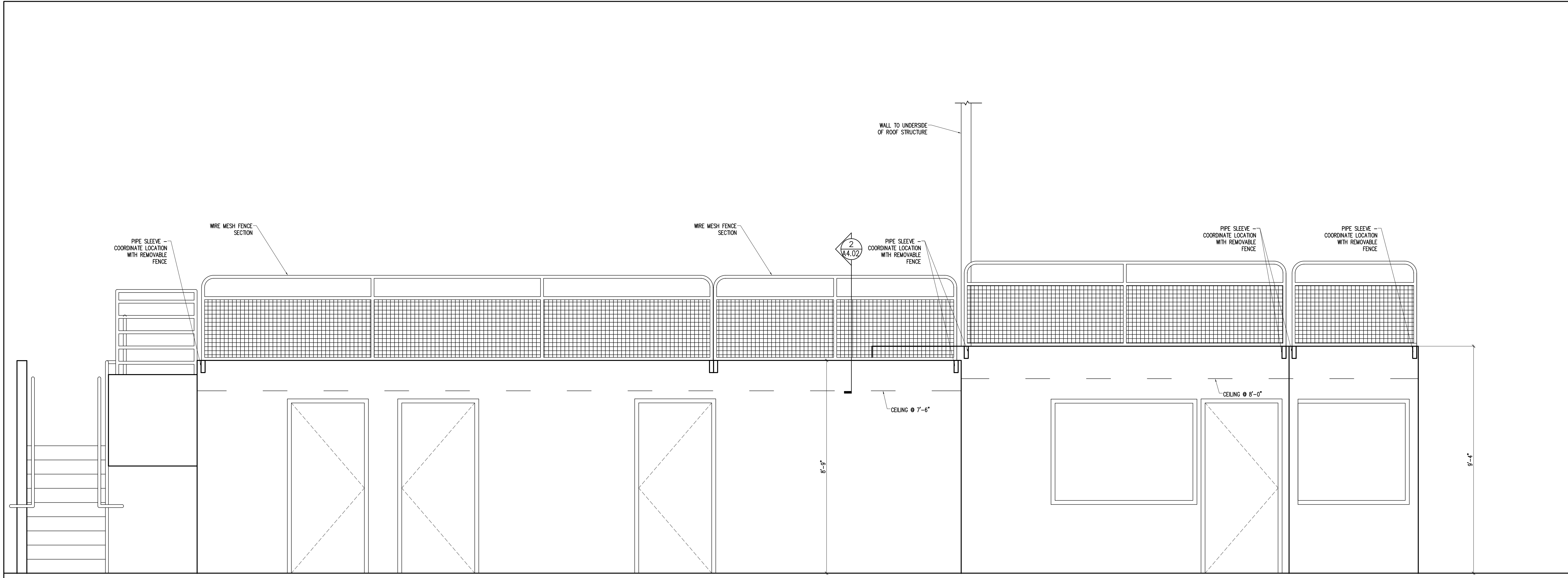
Revisions:


Date: 25 September 2014  
 Scale: AS NOTED  
**INTERIOR ELEVATIONS**

**A4.02**



**2** | MEZZANINE SECTION  
 SCALE: 1/2"=1'-0"



**1** | MEZZANINE ELEVATION  
 SCALE: 1/2"=1'-0"