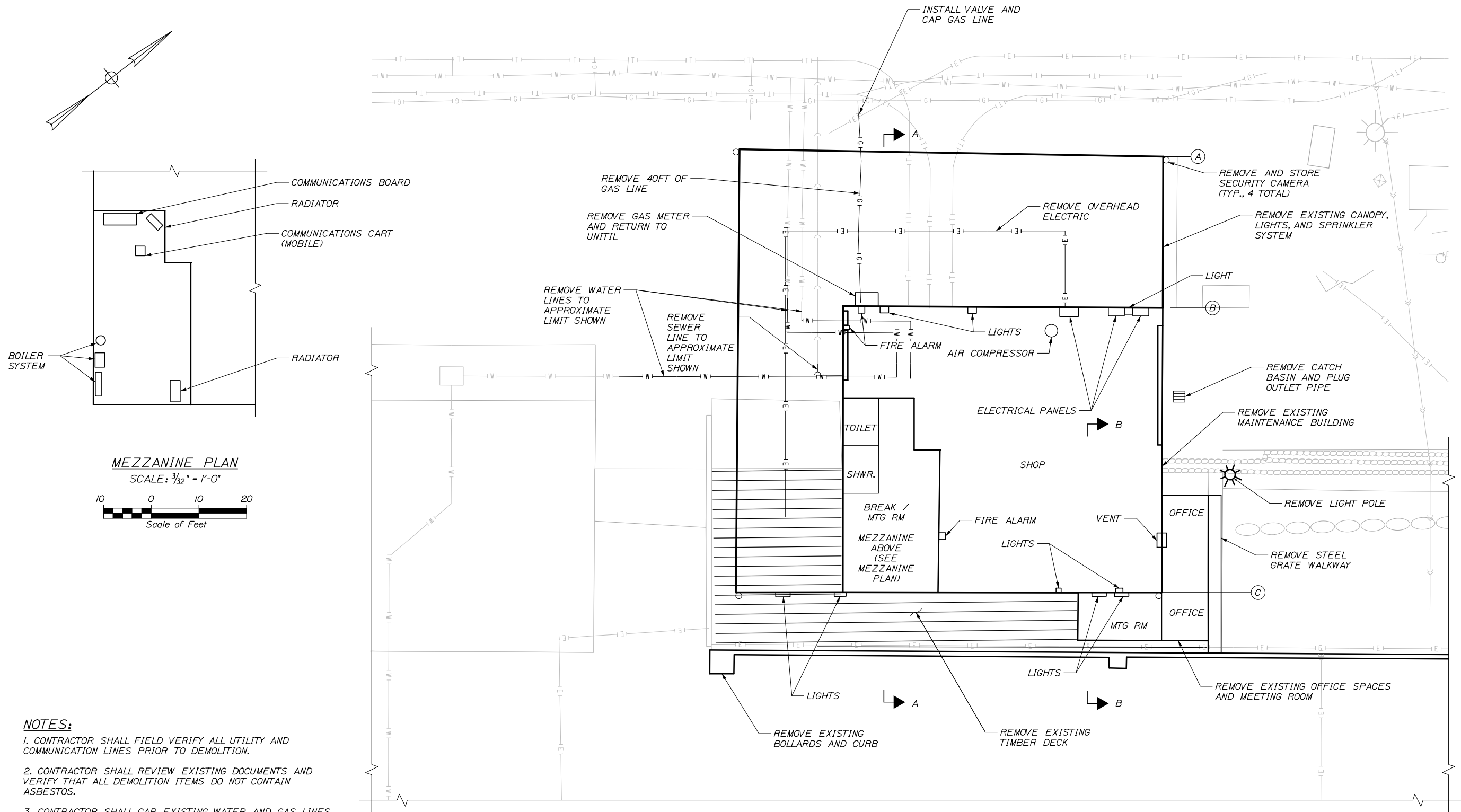


Date: 12/15/2017

Username:

Division:

Filename: 008_Demolition Details 1 (C03).dgn



MEZZANINE PLAN
SCALE: 3/32" = 1'-0"
Scale of Feet

FLOOR PLAN
SCALE: 3/32" = 1'-0"
Scale of Feet

- NOTES:**
1. CONTRACTOR SHALL FIELD VERIFY ALL UTILITY AND COMMUNICATION LINES PRIOR TO DEMOLITION.
 2. CONTRACTOR SHALL REVIEW EXISTING DOCUMENTS AND VERIFY THAT ALL DEMOLITION ITEMS DO NOT CONTAIN ASBESTOS.
 3. CONTRACTOR SHALL CAP EXISTING WATER AND GAS LINES. SEWER LINE SHALL BE EXTENDED AND CAPPED BEYOND THE SEAWALL. THE OTHER TWO WATER LINES SHALL BE MODIFIED AND RE-ROUTED. SEE SHEET C07 FOR MORE INFORMATION.
 4. SEE SHEET C04 FOR SECTION A-A.
 5. SEE SHEET C05 FOR SECTION B-B.
 6. COMPONENTS ASSOCIATED WITH THE SECURITY SYSTEM SHALL BE REMOVED AND STORED ON-SITE. INSTALLATION WILL BE PERFORMED BY GALAXY INTEGRATED. SEE ELECTRICAL SHEETS E01 - E02.
 7. SEE ASBESTOS ABATEMENT REPORT LOCATED IN THE APPENDIX OF THE SPECIFICATIONS FOR THE EXACT LOCATION, DESCRIPTION AND QUANTITY OF HAZMAT'S.
 8. ALL STRUCTURAL STEEL CONTAINS LEAD PAINT. PROPER HANDLING OF MATERIALS IS REQUIRED AND SHALL FOLLOW ALL FEDERAL, STATE AND LOCAL REQUIREMENTS FOR HANDLING AND DISPOSAL.

HAZARDOUS MATERIAL QUANTITY LIST:

SAMPLE	MATERIALS
NS-1	HOT AIR SYSTEM EXPANSION GASKETS
NS-2	MERCURY VAPOR/METAL HALIDE LIGHT TUBES 148-FIXTURES, 2-4 LIGHTS/FIXTURE
NS-3	MERCURY THERMOSTAT TUBES 20-LOCATIONS +/-
NS-4	BATTERY PACKS/LIGHT TUBES AT ALL EXIT & EMERGENCY LIGHTS
NS-5	POSSIBLE PCB BALLAST ALL LIGHT TUBES LEAD PAINT EXTERIOR COLUMNS OF IMT BUILDING

(NS) 'NOT SAMPLED'

99% DESIGN
December 15, 2017

STATE OF MAINE DEPARTMENT OF TRANSPORTATION		STP 2194(206)		WIN 021942.06	
PROJ. MANAGER	DATE	BY	DATE	SIGNATURE	DATE
DESIGN-DETAILED J. Burns	12/17	P. Bishop	12/17		
CHECKED-REVIEWED T. Poplin		C. Marin			
DESIGNS-DETAILED					
DESIGNS-DETAILED					
REVISIONS 1				P.E. NUMBER	
REVISIONS 2				DATE	
REVISIONS 3					
REVISIONS 4					
FIELD CHANGES					
PORTLAND INTERNATIONAL MARINE TERMINAL MAINE INTERMODAL PORT PRODUCTIVITY PROJECT WHARF INFILL & BUILDING REMOVAL CUMBERLAND COUNTY					
DEMOLITION DETAILS I - MAINTENANCE BUILDING					
SHEET NUMBER					
C03					
8 OF 21					

