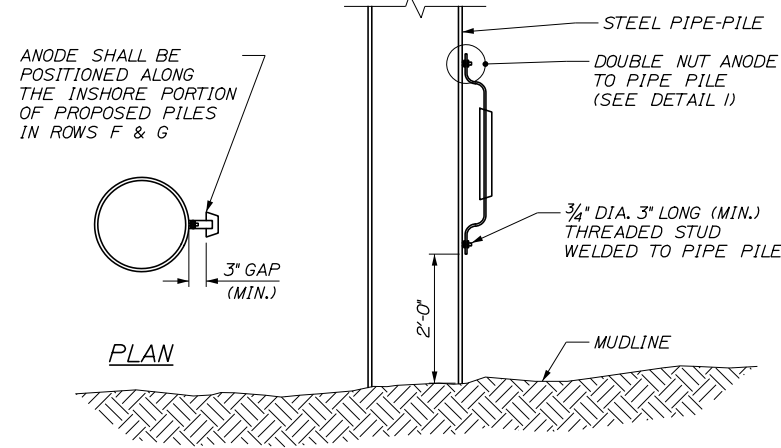


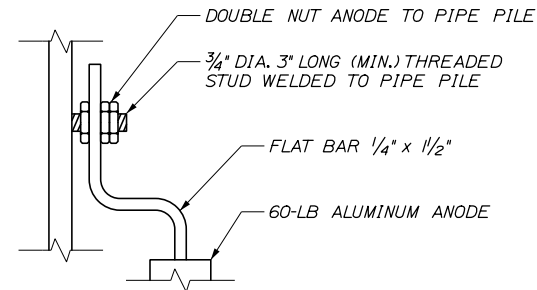
**COATING PLAN**

SCALE: 1" = 25'-0"



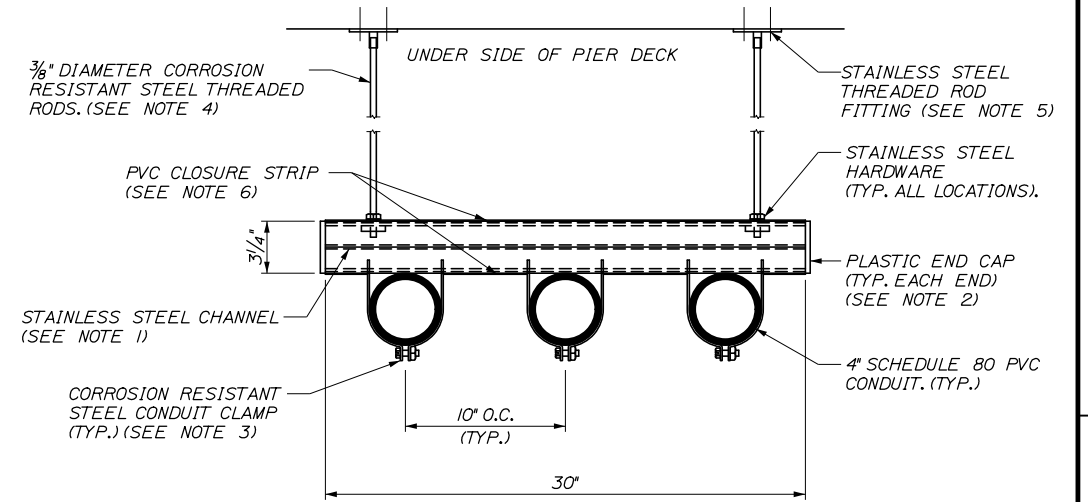
**ANODE ELEVATION**

N.T.S.



**DETAIL I**

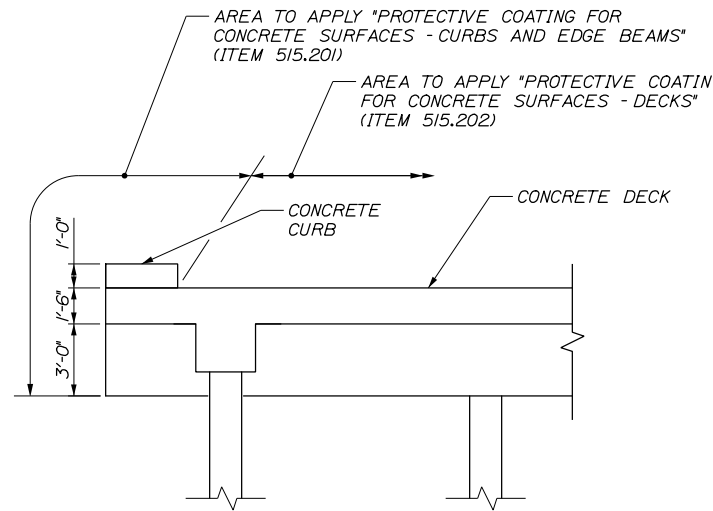
N.T.S.



**CONDUIT HANGER DETAIL**

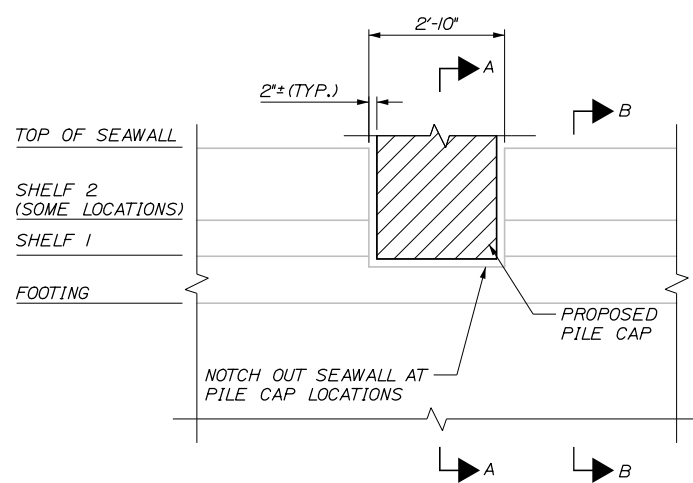
SCALE: 2" = 1'-0"

1. STAINLESS STEEL CHANNEL UNISTRUT #P100ISS, OR APPROVED EQUAL.
2. PLASTIC END CAP (TYPICAL EACH END). UNISTRUT #P2860-10VY, OR APPROVED EQUAL.
3. CORROSION RESISTANT STEEL CONDUIT CLAMP (TYP.) UNISTRUT #PII2IEG, OR APPROVED EQUAL.
4. 3/8" DIAMETER CORROSION RESISTANT STEEL THREADED RODS. UNISTRUT "DEFENDER SERIES", OR APPROVED EQUAL. SUSPENSION LENGTH AT LOCATION WHERE HANGER ASSEMBLY RUNS PARALLEL (BETWEEN) TO PILE CAPS SHALL BE 12". SUSPENSION LENGTH AT LOCATION WHERE HANGER ASSEMBLY RUNS PERPENDICULAR (ACROSS) TO PILE CAPS SHALL BE 36".
5. STAINLESS STEEL THREADED ROD FITTING. ATTACH TO UNDERSIDE OF PIER DECK WITH STAINLESS STEEL ANCHOR BOLTS. DRILL AND GROUT.
6. PVC CLOSURE STRIP (TYPICAL FOR ALL OPEN CHANNEL SECTIONS). UNISTRUT #P3712PBK, OR APPROVED EQUAL.
7. PROVIDE HANGER ASSEMBLY EVERY 5 FEET OF CONDUIT LENGTH.
8. PROVIDE EXPANSION FITTING FOR EACH CONDUIT EVERY 50 FEET OF LENGTH.



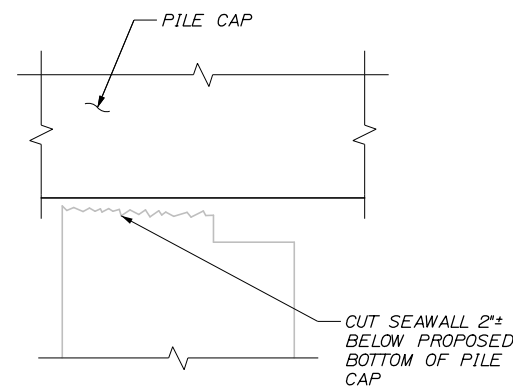
**COATING DETAIL**

SCALE: 1/4" = 1'-0"



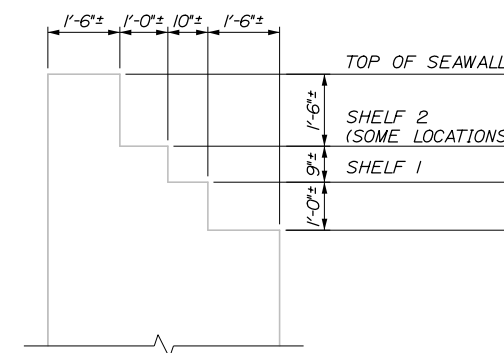
**SEAWALL NOTCH SECTION**

SCALE: 1/2" = 1'-0"



**SECTION A-A**

SCALE: 1/2" = 1'-0"



**SECTION B-B**

SCALE: 1/2" = 1'-0"

99% DESIGN  
December 15, 2017



PROJ. MANAGER	BY	DATE	DESIGN-DETAILED	CHECKED-REVIEWED	DESIGN-DETAILED	REVISIONS 1	REVISIONS 2	REVISIONS 3	REVISIONS 4	FIELD CHANGES
	P. Bishop C. Marin	12/17	T. Poulin	J. Burns						