

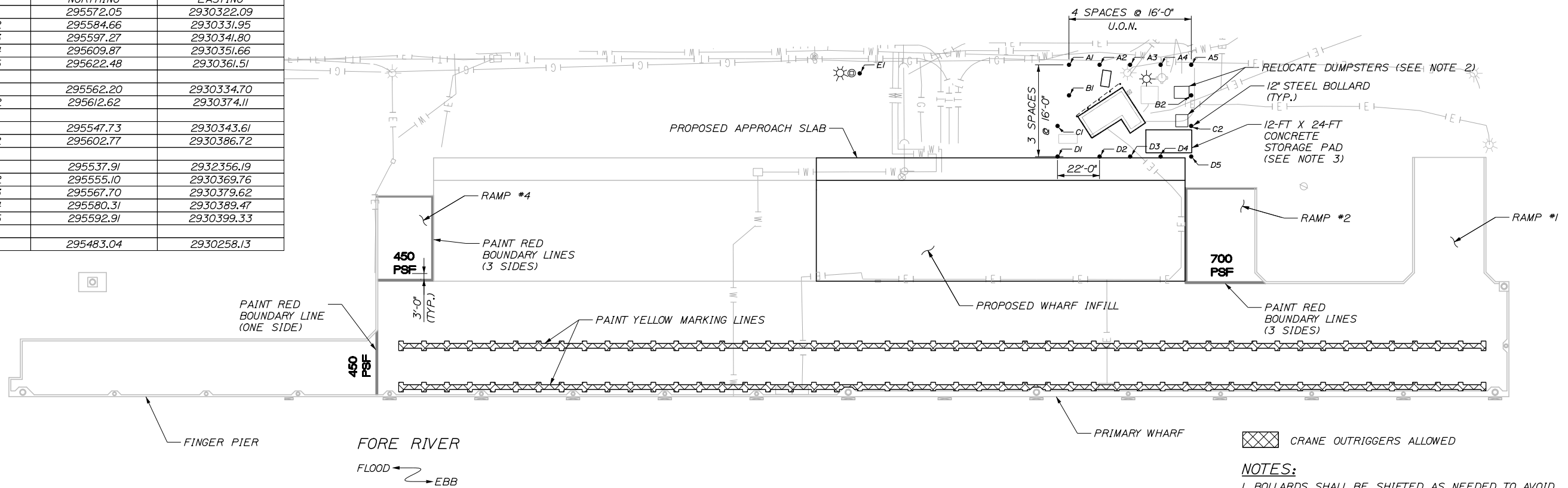
Date: 12/19/2017

Username:

Division:

Filename: 013\_Site Details (C08).dgn

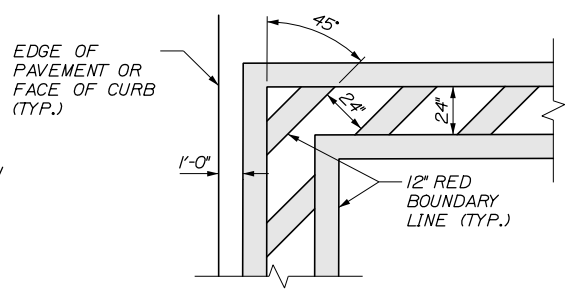
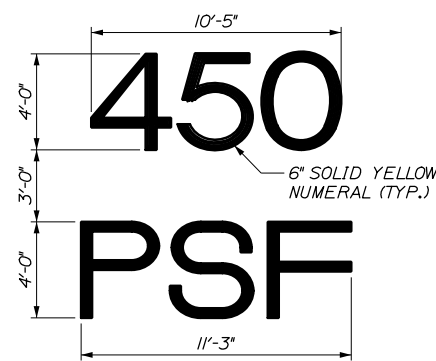
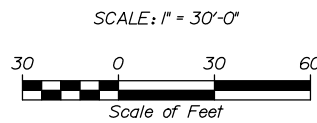
BOLLARD LOCATIONS		
	NORTHING	EASTING
A1	295572.05	2930322.09
A2	295584.66	2930331.95
A3	295597.27	2930341.80
A4	295609.87	2930351.66
A5	295622.48	2930361.51
B1	295562.20	2930334.70
B2	295612.62	2930374.11
C1	295547.73	2930343.61
C2	295602.77	2930386.72
D1	295537.91	2932356.19
D2	295555.10	2930369.76
D3	295567.70	2930379.62
D4	295580.31	2930389.47
D5	295592.91	2930399.33
E1	295483.04	2930258.13



CRANE OUTRIGGERS ALLOWED

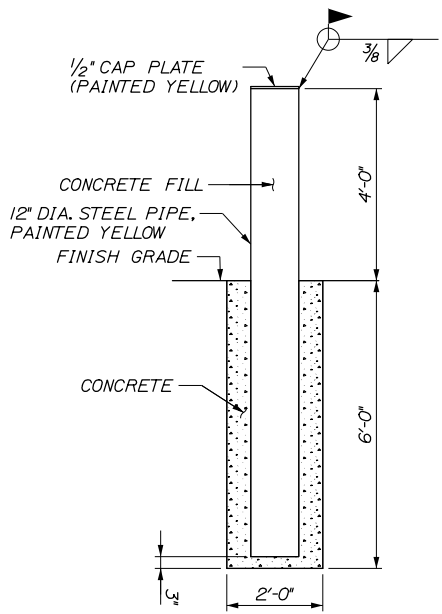
- NOTES:**
- BOLLARDS SHALL BE SHIFTED AS NEEDED TO AVOID UTILITY LINES.
  - RELOCATING DUMPSTERS SHALL BE COORDINATED WITH THE PORT AUTHORITY TO DETERMINE THEIR NEW LOCATION.
  - EXACT LOCATION OF CONCRETE STORAGE PAD TO BE DETERMINED BY THE RESIDENT.

**WHARF INFILL DETAIL**



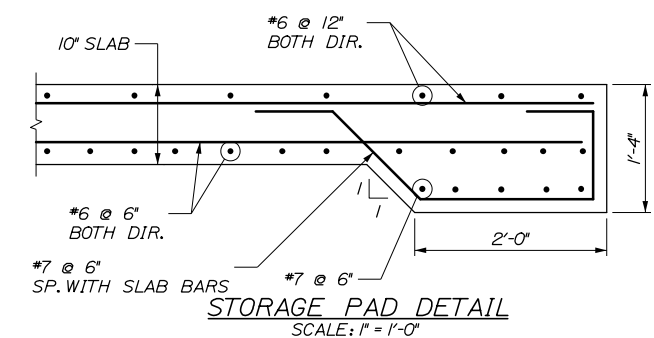
- NOTES:**
- LETTERS AND NUMERALS SHALL BE APPLIED WITH USE OF STENCILS. STENCILS SHALL BE APPROVED BY THE RESIDENT PRIOR TO USE.
  - 700 PSF PAINT MARKING SHALL BE OF SIMILAR DIMENSION.
  - REFER TO SPECIAL PROVISION 627, PAVEMENT MARKINGS FOR ADDITIONAL INFORMATION.

**PAVEMENT BOUNDARY MARKINGS AT RAMPS**  
SCALE: N.T.S.

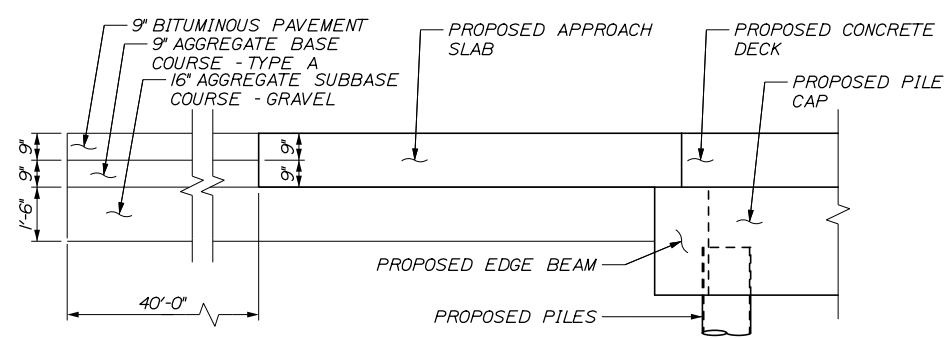


**NOTE:** REFER TO SPECIAL PROVISION 84I, BOLLARDS FOR ADDITIONAL INFORMATION.

**12\"/>**



**STORAGE PAD DETAIL**  
SCALE: 1" = 1'-0"



**PROPOSED PAVEMENT SECTION**  
SCALE: 3/8" = 1'-0"

99% DESIGN  
December 15, 2017



STATE OF MAINE  
DEPARTMENT OF TRANSPORTATION  
STP 2194(206)  
WIN  
021942.06

DATE	BY	PROJ. MANAGER	CHECKED	DESIGNED	REVISIONS	FIELD CHANGES
12/17	P. Bishop	J. Burris	T. Poplin		1	
12/17	C. Marin	T. Poplin			2	
					3	
					4	

DATE	BY	PROJ. MANAGER	CHECKED	DESIGNED	REVISIONS	FIELD CHANGES

PORTLAND INTERNATIONAL MARINE TERMINAL  
MAINE INTERMODAL PORT PRODUCTIVITY PROJECT  
WHARF INFILL & BUILDING REMOVAL  
CUMBERLAND COUNTY  
PORTLAND

SHEET NUMBER  
**C08**  
13 OF 21

**SITE DETAILS**