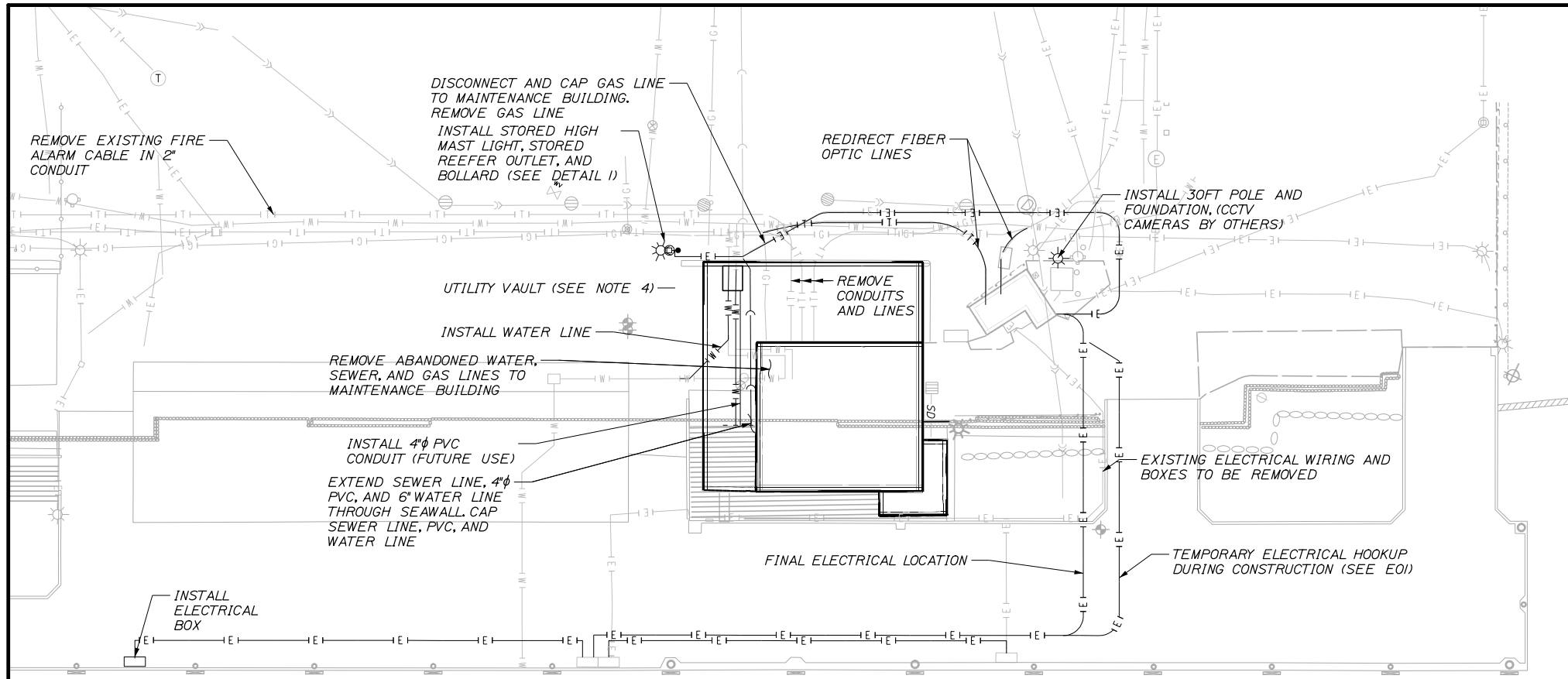


Date: 12/15/2017

Username:

Division:

Filename: 012_Site Utility Plan (C07).dgn



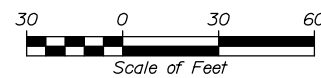
NOTES:

1. SEE SHEET C01 FOR ADDITIONAL INFORMATION.
2. FOR UTILITY HANGER DETAILS, SEE SHEET S06.
3. FOR ELECTRICAL PLAN, SEE SHEET E01.
4. LOCATION OF UTILITY SHALL BE COORDINATED WITH THE RESIDENT AND ENGINEER.
5. CONTRACTOR TO MAKE POSITIVE DOWEL CONNECTION BETWEEN THE CONCRETE REEFER PEDESTAL BASE AND THE CONCRETE HIGH MAST LIGHT POLE FOOTING.

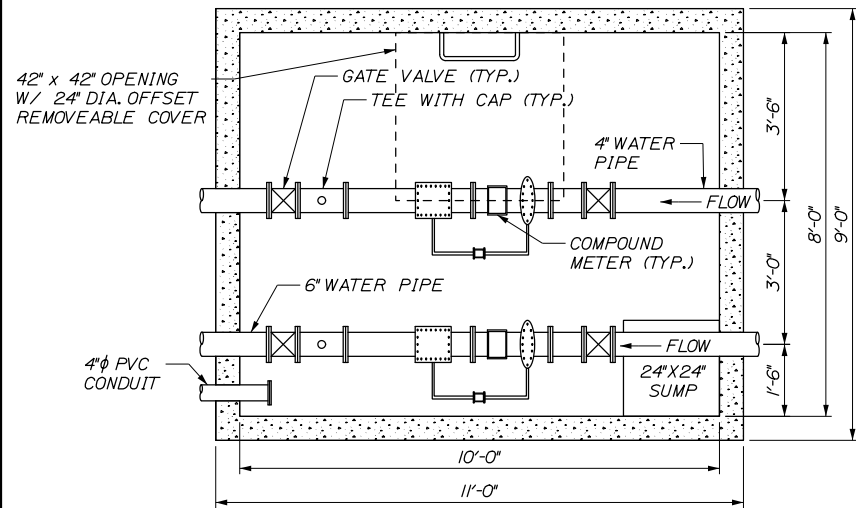
FORE RIVER
 FLOOD → EBB

SITE UTILITY PLAN

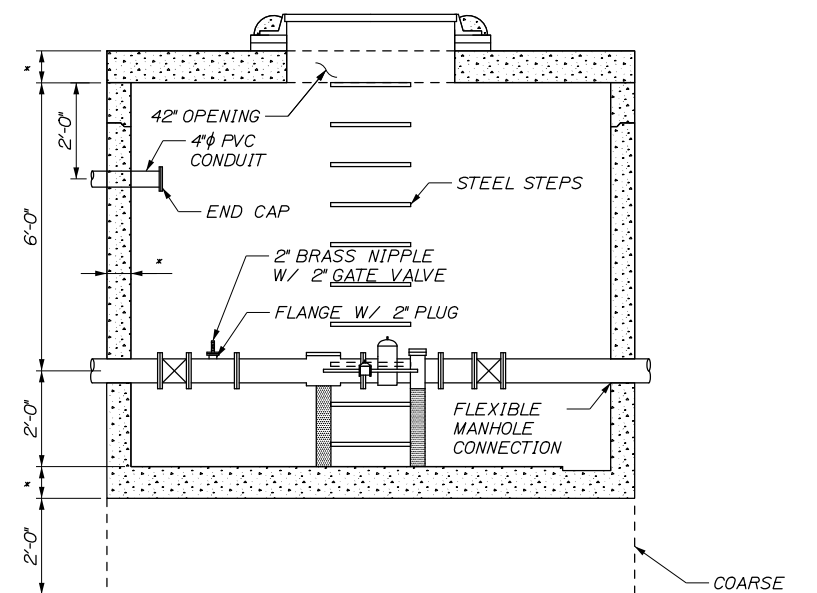
SCALE: 1" = 30'-0"



99% DESIGN
 December 15, 2017



PLAN

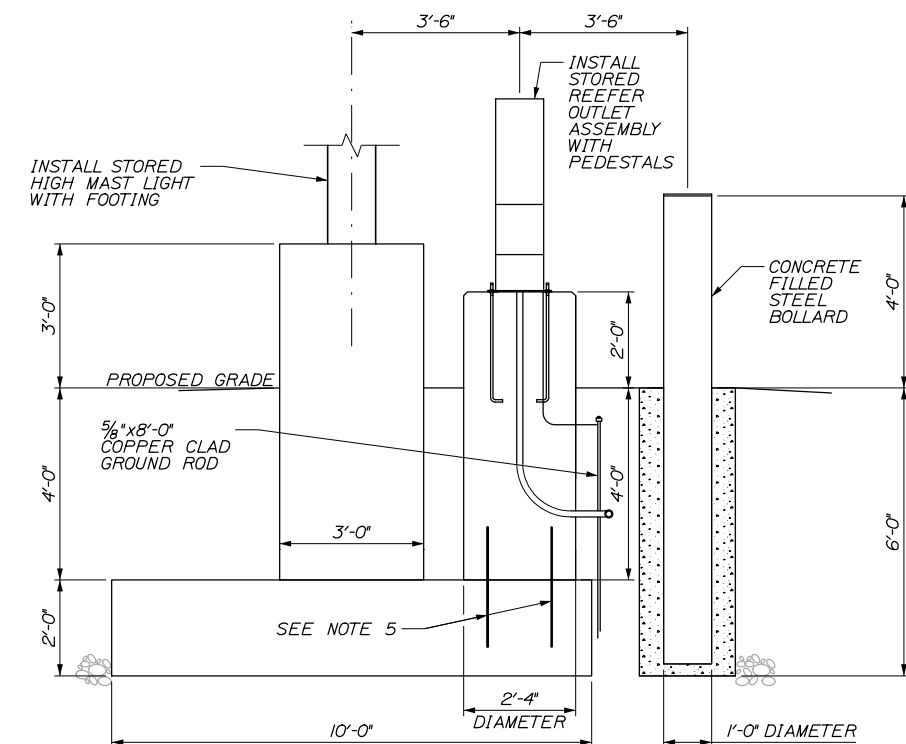


SECTION

UTILITY VAULT DETAIL

N.T.S.

* DIMENSIONS TO BE DETERMINED BY PRECAST MANUFACTURER SO AS TO WITHSTAND LOADS IDENTIFIED IN THE SPECIAL PROVISIONS.



DETAIL I

SCALE: 1/2" = 1'-0"

STATE OF MAINE
 DEPARTMENT OF TRANSPORTATION
 STP 2194(206)
 WIN
 021942.06

DATE	BY	DESIGN-DETAILED	CHECKED-REVIEWED	DESIGN-DETAILED	REVISIONS 1	REVISIONS 2	REVISIONS 3	REVISIONS 4	FIELD CHANGES
12/17	P. Bishop	J. Burris	T. Poplin						
12/17	C. Merin								

DATE	SIGNATURE	P.E. NUMBER	DATE

PORTLAND INTERNATIONAL MARINE TERMINAL
 MAINE INTERMODAL PORT PRODUCTIVITY PROJECT
 WHARF INFILL & BUILDING REMOVAL
 CUMBERLAND COUNTY
 PORTLAND
 SITE UTILITY PLAN
 AND DETAILS

SHEET NUMBER

C07

12 OF 21

