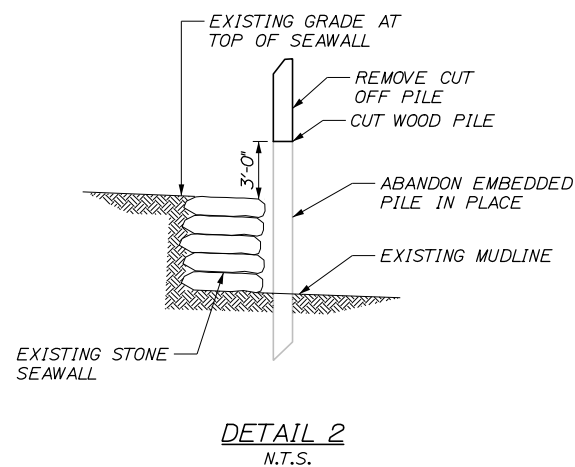
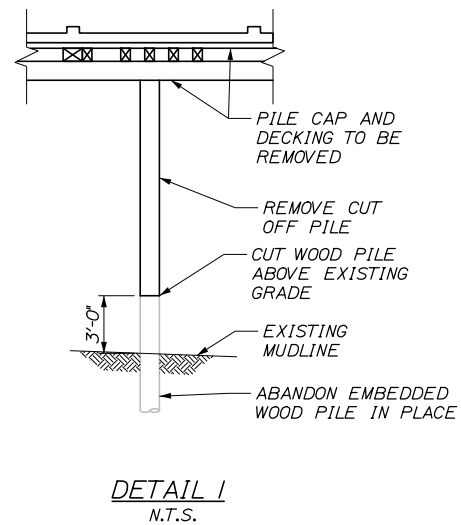
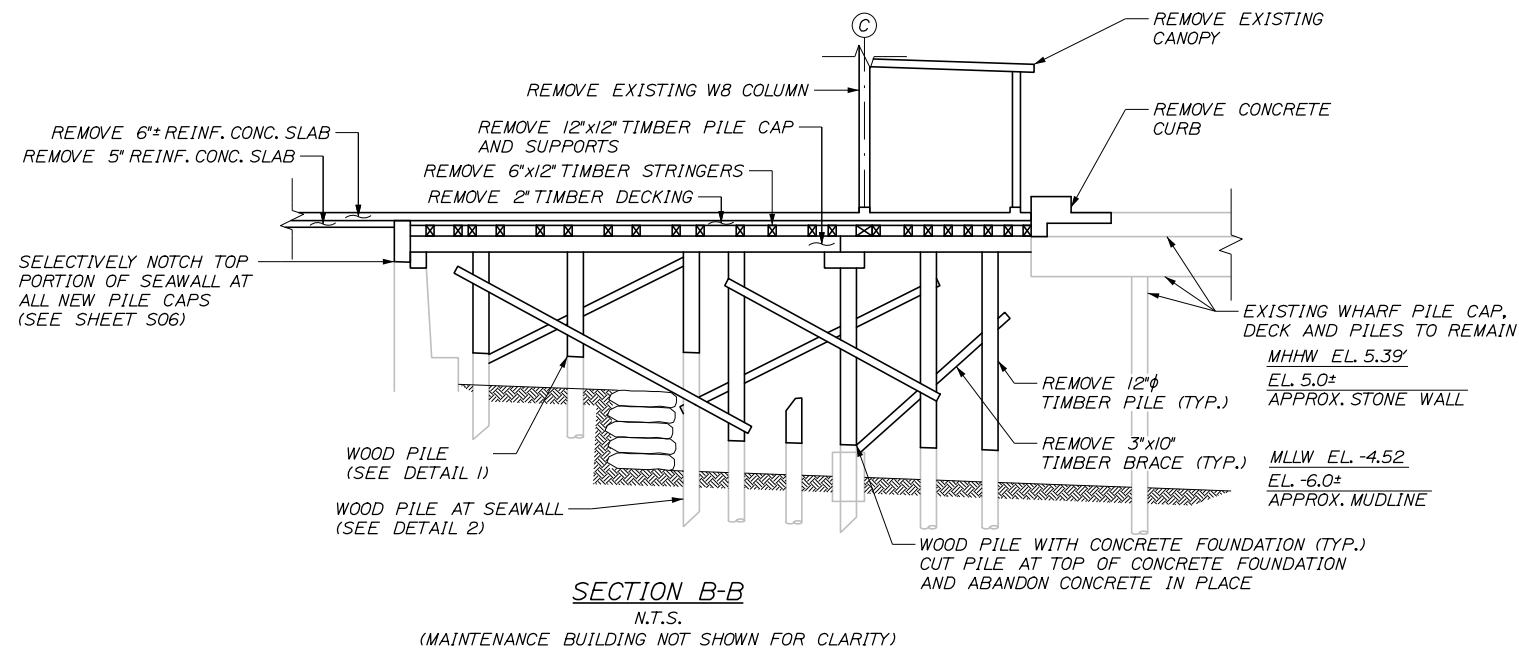


Date: 12/15/2017

Username:

Division:

Filename: 010_Demolition Details 3 (C05).dgn



DEMOLITION NOTES:

1. ALL TIMBER PILES ENCOUNTERED SHALL BE CUT OFF APPROXIMATELY 3' ABOVE MUDLINE AND REMAINING EMBEDDED PORTION MAY BE ABANDONED IN PLACE. THERE ARE AN ESTIMATED 80 TIMBER PILES.
2. CONTRACTOR MAY BE REQUIRED TO REMOVE TIMBER PILES COMPLETELY WHERE CONFLICTS WITH FUTURE PILES EXIST. AN ESTIMATED 20 PILES WILL HAVE TO BE FULLY EXTRACTED.
3. IN LOCATIONS WHERE PILES ARE EMBEDDED WITHIN THE CONCRETE SEAWALL CUT PILE AS CLOSE TO CONCRETE AS POSSIBLE.
4. ALL TIMBER PILES ENCOUNTERED AT FACE OF STONE SEAWALL SHALL BE CUT 3' ABOVE TOP OF STONE SEAWALL ELEVATION AND REMAINING EMBEDDED PORTIONS MAY BE ABANDONED IN PLACE.
5. 3/2" WATER SERVICE TO WHARF TO REMAIN IN SERVICE. SUPPORT PIPE WITH TEMPORARY BRACING TO THE SATISFACTION OF THE RESIDENT.

99% DESIGN
December 15, 2017

STATE OF MAINE
DEPARTMENT OF TRANSPORTATION
STP 2194(206)
WIN
021942.06

PROJ. MANAGER	BY	DATE
DESIGN-DETAILED J. Burris	P. Bishop	12/17
CHECKED-REVIEWED T. Poplin	C. Merin	12/17
DESIGNS-DETAILED		
REVISIONS 1		
REVISIONS 2		
REVISIONS 3		
REVISIONS 4		
FIELD CHANGES		

PORTLAND INTERNATIONAL MARINE TERMINAL
MAINE INTERMODAL PORT PRODUCTIVITY PROJECT
WHARF INFILL & BUILDING REMOVAL
CUMBERLAND COUNTY
PORTLAND
DEMOLITION DETAILS III -
MAINTENANCE BUILDING

SHEET NUMBER

C05

10 OF 21

