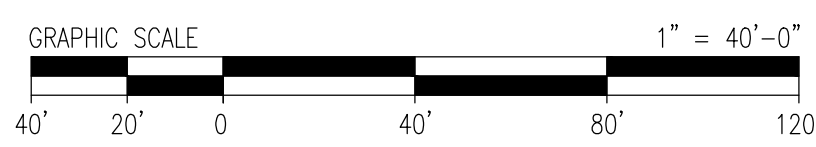


LEGEND	
EXISTING	PROPOSED

AFFECTED EXISTING FACILITIES  
(FEBRUARY 2009)  
THAT WILL BE RELOCATED



REV	BY	DATE	DESCRIPTION	DWG NO.	REFERENCE DRAWINGS	SEAL AND SIGNATURE

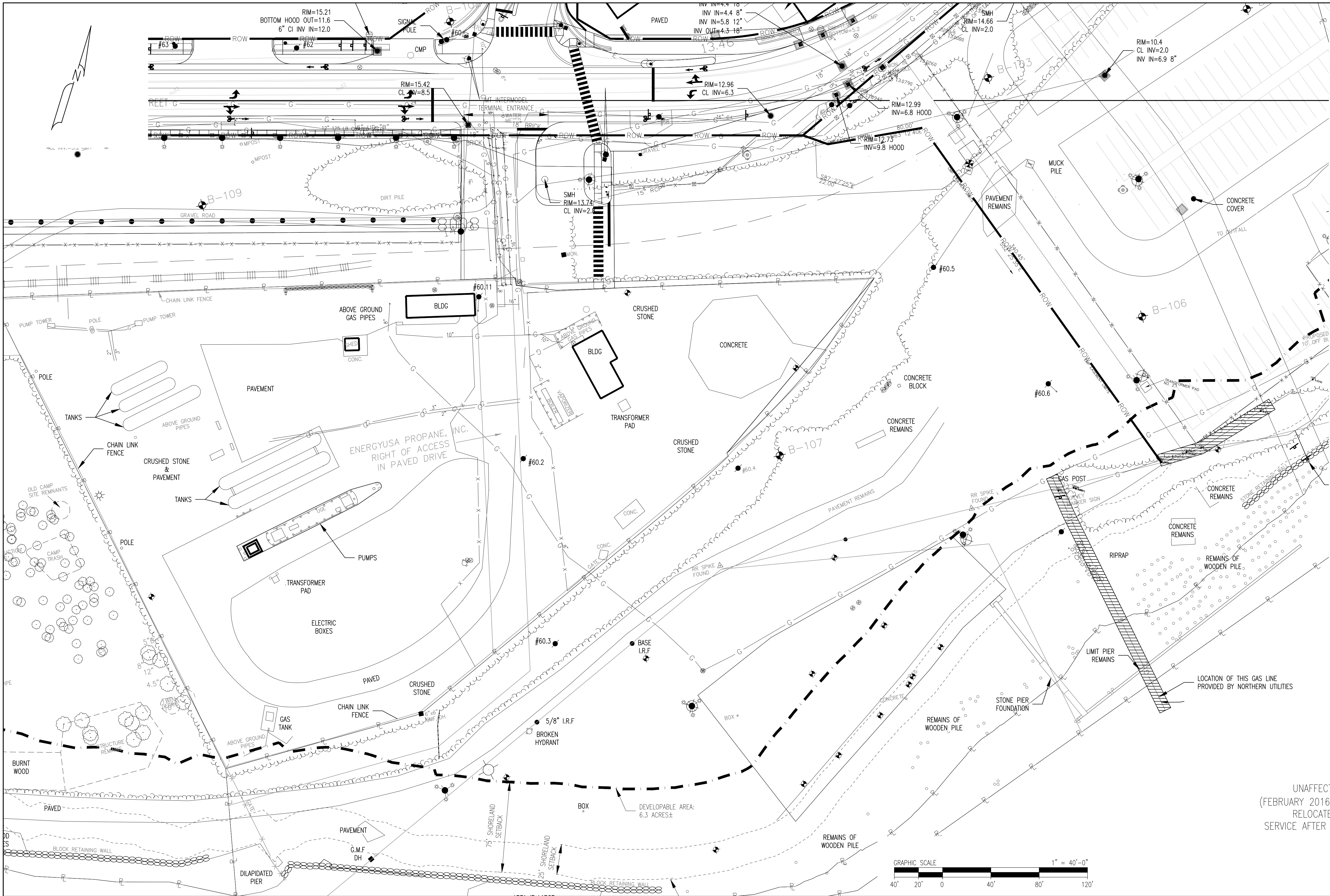
PRJ MANAGER: MARK D. WOOD	CLIENT INFORMATION
PRJ ENGINEER: MARK D. WOOD	
PRJ NAME: WEST COMMERCIAL STREET	
PRJ NUMBER: 5183	ME GAS OPERATIONS
PRJ MILESTONE:	DESIGNED BY: MDW 03/18/16
PRJ PHASE: DESIGN	DRAFTED BY: RPC 03/18/16
DESIGNED BY: MDW 03/18/16	DESIGN MANAGER: TIM BICKFORD
DRAFTED BY: RPC 03/18/16	REVIEWED BY:
CHECKED BY: SMR 03/18/16	DESIGN ENGINEER: BOB SCHUMMRICK
CHECKED BY: SMR 03/18/16	CHECKED BY:
APPROVED BY: MDW 03/18/16	ACTIVATION ORDER:
APPROVED BY: MDW 03/18/16	APPROVED BY:

SHEET TITLE	FIGURE 1
PROJECT NAME	WEST COMMERCIAL STREET REGULATOR STATION
PROJECT LOCATION	PORTLAND, ME 04101

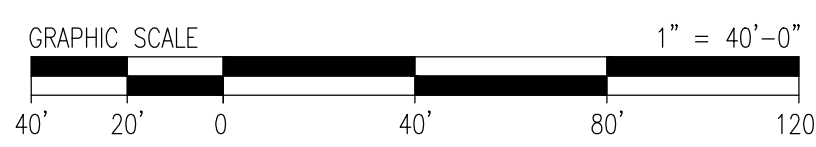
FILE NAME: 5183_C00 - FIGURES.DWG	SIZE	SHEET	REV
PLOT DATE: 04/01/2016 3:29 PM	22X34	A01	
SCALE: 1" = 40'-0"	FIGURE 1		

**PROCESS PIPELINE SERVICES**


1600 Providence Highway  
Walpole, MA 02081  
781.829.0524  
processpipeline.com




LEGEND	
EXISTING	PROPOSED
[Symbol]	BOUNDARY LINE
[Symbol]	CONTOUR MAJOR
[Symbol]	CONTOUR MINOR
[Symbol]	DRAINAGE
[Symbol]	EASEMENT
[Symbol]	ELECTRIC
[Symbol]	FENCE CHAIN LINK
[Symbol]	FENCE POST
[Symbol]	FENCE STOCKADE
[Symbol]	EDGE OF GRAVEL
[Symbol]	EDGE OF PAVEMENT
[Symbol]	EDGE OF RIVER
[Symbol]	EDGE OF WETLAND
[Symbol]	GAS
[Symbol]	GUARDRAIL
[Symbol]	OVER HEAD WIRES
[Symbol]	OVER HEAD TELEPHONE
[Symbol]	OVER HEAD ELECTRIC
[Symbol]	PROPERTY LINE
[Symbol]	RETAINING WALL
[Symbol]	RIGHT OF WAY
[Symbol]	SEWER
[Symbol]	SILT FENCE
[Symbol]	STONEWALL
[Symbol]	STREAM
[Symbol]	TELEPHONE
[Symbol]	TREELINE
[Symbol]	WATER



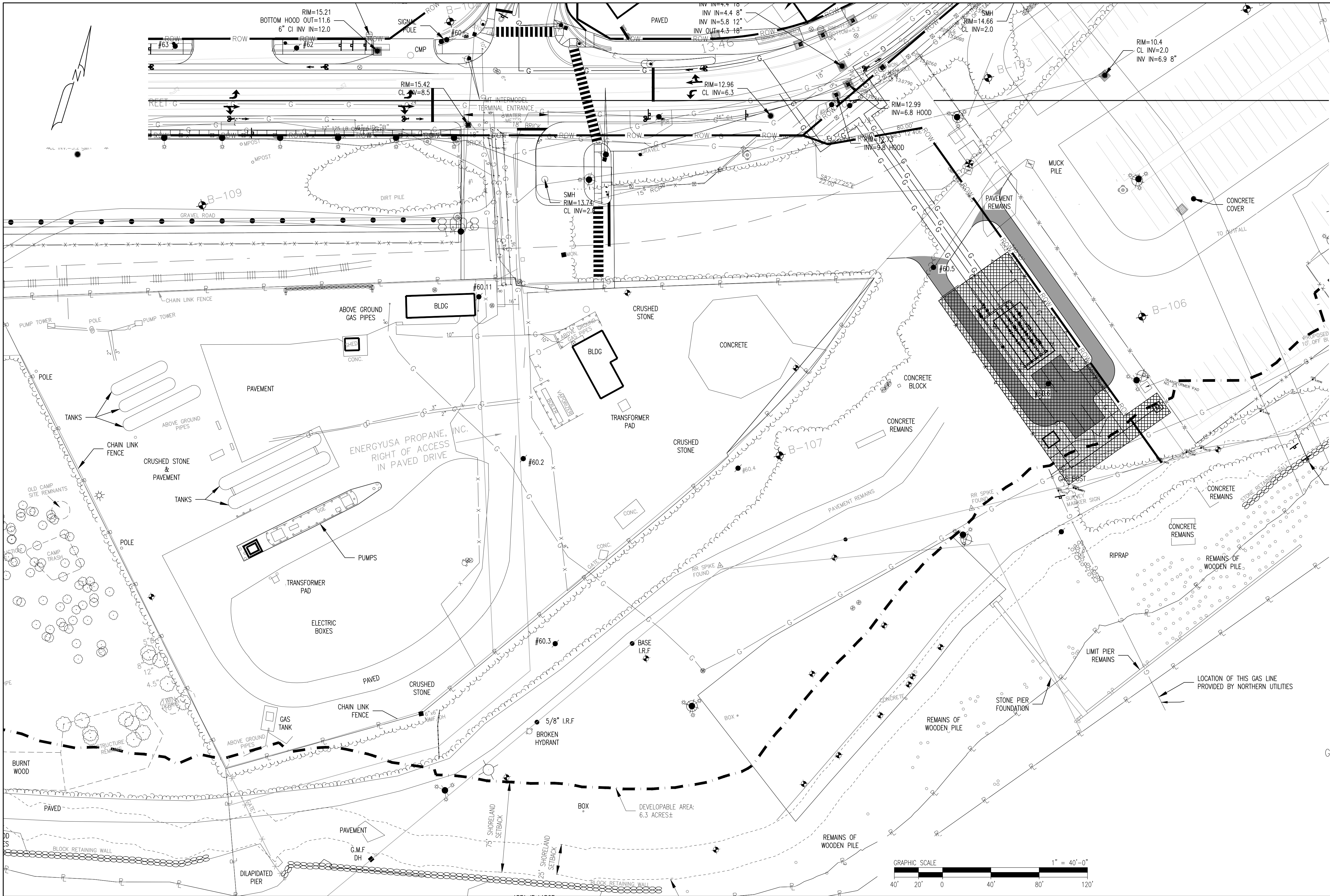
REV	BY	DATE	DESCRIPTION	DWG NO.	REFERENCE DRAWINGS	SEAL AND SIGNATURE

PRJ MANAGER: MARK D. WOOD	CLIENT INFORMATION
PRJ ENGINEER: MARK D. WOOD	
PRJ NAME: WEST COMMERCIAL STREET	
PRJ NUMBER: 5183	ME GAS OPERATIONS
PRJ MILESTONE:	
PRJ PHASE: DESIGN	
DESIGNED BY: MDW 03/18/16	DESIGN MANAGER: TIM BICKFORD
DRAFTED BY: RPC 03/18/16	REVIEWED BY:
CHECKED BY: SMR 03/18/16	DESIGN ENGINEER: BOB SCHUMMRICK
APPROVED BY: MDW 03/18/16	CHECKED BY:
	ACTIVATION ORDER:
	APPROVED BY:

SHEET TITLE	FIGURE 2
PROJECT NAME	WEST COMMERCIAL STREET REGULATOR STATION
PROJECT LOCATION	PORTLAND, ME 04101

	1600 Providence Highway Walpole, MA 02081 781.829.0524 processpipelineservices.com	
	FILE NAME: 5183_C00 - FIGURES.DWG	SIZE: 22X34
PLOT DATE: 04/01/2016 3:29 PM	SHEET: A01	REV: FIGURE 2
SCALE: 1" = 40'-0"		

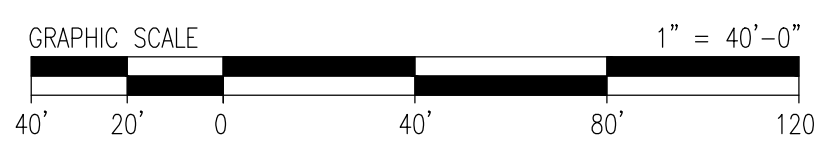




EXISTING		LEGEND		PROPOSED	
---	BOUNDARY LINE	---	BOUNDARY LINE	---	BOUNDARY LINE
---	CONTOUR MAJOR	---	CONTOUR MAJOR	---	CONTOUR MAJOR
---	CONTOUR MINOR	---	CONTOUR MINOR	---	CONTOUR MINOR
---	DRAINAGE	---	DRAINAGE	---	DRAINAGE
---	EASEMENT	---	EASEMENT	---	EASEMENT
---	ELECTRIC	---	ELECTRIC	---	ELECTRIC
x-x-x	FENCE CHAIN LINK	x-x-x	FENCE CHAIN LINK	x-x-x	FENCE CHAIN LINK
o-o-o	FENCE POST	o-o-o	FENCE POST	o-o-o	FENCE POST
---	FENCE STOCKADE	---	FENCE STOCKADE	---	FENCE STOCKADE
---	EDGE OF GRAVEL	---	EDGE OF GRAVEL	---	EDGE OF GRAVEL
---	EDGE OF PAVEMENT	---	EDGE OF PAVEMENT	---	EDGE OF PAVEMENT
---	EDGE OF RIVER	---	EDGE OF RIVER	---	EDGE OF RIVER
---	EDGE OF WETLAND	---	EDGE OF WETLAND	---	EDGE OF WETLAND
G	GAS	G	GAS	G	GAS
---	GUARDRAIL	---	GUARDRAIL	---	GUARDRAIL
---	OVER HEAD WIRES	---	OVER HEAD WIRES	---	OVER HEAD WIRES
---	OVER HEAD TELEPHONE	---	OVER HEAD TELEPHONE	---	OVER HEAD TELEPHONE
---	OVER HEAD ELECTRIC	---	OVER HEAD ELECTRIC	---	OVER HEAD ELECTRIC
---	PROPERTY LINE	---	PROPERTY LINE	---	PROPERTY LINE
---	RETAINING WALL	---	RETAINING WALL	---	RETAINING WALL
---	RIGHT OF WAY	---	RIGHT OF WAY	---	RIGHT OF WAY
S	SEWER	S	SEWER	S	SEWER
SF	SILT FENCE	SF	SILT FENCE	SF	SILT FENCE
---	STONEWALL	---	STONEWALL	---	STONEWALL
---	STREAM	---	STREAM	---	STREAM
T	TELEPHONE	T	TELEPHONE	T	TELEPHONE
---	TREELINE	---	TREELINE	---	TREELINE
W	WATER	W	WATER	W	WATER

GAS REGULATOR STATION EASEMENT AREA

- NOTES:
1. MAINEDOT WILL GRANT THE NECESSARY ELECTRICITY EASEMENT TO CMP TO ALLOW SERVICE TO THE REGULATOR STATION WHEN NEEDED.
  2. IN THE EVENT UNITIL GAS REGULATOR EASEMENT AREA DOES NOT PROVIDE SUFFICIENT SPACE FOR SNOW STORAGE, UNITIL WILL BE PERMITTED TO PUSH SNOW TO, AND STORE SNOW ON, SUCH AREAS ON THE SITE OUTSIDE ITS EASEMENT AREA AS MDOT DESIGNATES.



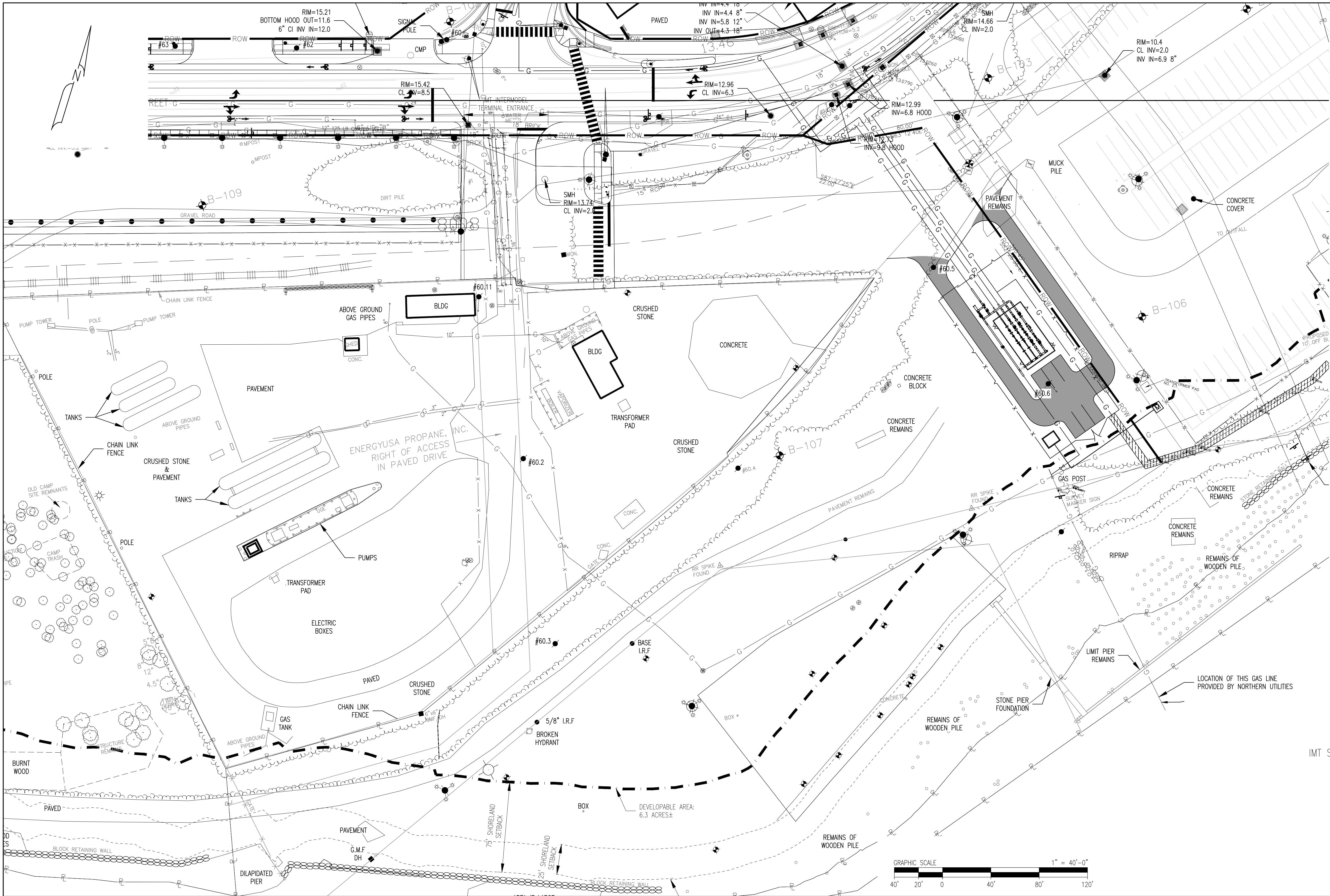
REV	BY	DATE	DESCRIPTION	DWG NO.	REFERENCE DRAWINGS	SEAL AND SIGNATURE

PRJ MANAGER: MARK D. WOOD	CLIENT INFORMATION		PROJECT TITLE
PRJ ENGINEER: MARK D. WOOD	PRJ NAME: WEST COMMERCIAL STREET		FIGURE 4
PRJ NUMBER: 5183	DESIGNED BY: MDW 03/18/16	PROJECT NAME	WEST COMMERCIAL STREET REGULATOR STATION
PRJ MILESTONE:	DRAFTED BY: RPC 03/18/16	PROJECT LOCATION	PORTLAND, ME 04101
PRJ PHASE: DESIGN	CHECKED BY: SMR 03/18/16	DESIGN MANAGER: TIM BICKFORD	REVIEWED BY:
APPROVED BY: MDW 03/18/16	ACTIVATION ORDER:	DESIGN ENGINEER: BOB SCHUMMRICK	CHECKED BY:

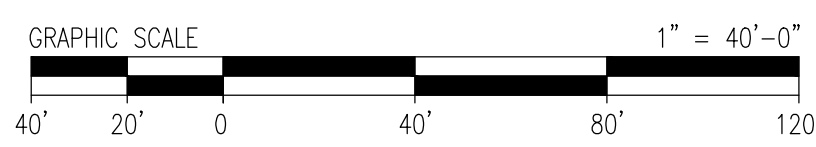
FILE NAME: 5183_C00 - FIGURES.DWG	SIZE	SHEET	REV
SCALE: 1" = 40'-0"	22X34	A01	FIGURE 4

1600 Providence Highway  
 Walpole, MA 02081  
 781.829.0524  
 processpipelineservices.com





LEGEND	
EXISTING	PROPOSED
	BOUNDARY LINE
	CONTOUR MAJOR
	CONTOUR MINOR
	DRAINAGE
	EASEMENT
	ELECTRIC
	FENCE CHAIN LINK
	FENCE POST
	FENCE STOCKADE
	EDGE OF GRAVEL
	EDGE OF PAVEMENT
	EDGE OF RIVER
	EDGE OF WETLAND
	GAS
	GUARDRAIL
	OVER HEAD WIRES
	OVER HEAD TELEPHONE
	OVER HEAD ELECTRIC
	PROPERTY LINE
	RETAINING WALL
	RIGHT OF WAY
	SEWER
	SILT FENCE
	STONEWALL
	STREAM
	TELEPHONE
	TREELINE
	WATER



IMT SERVICE LINE CORRIDOR EASEMENT AREA

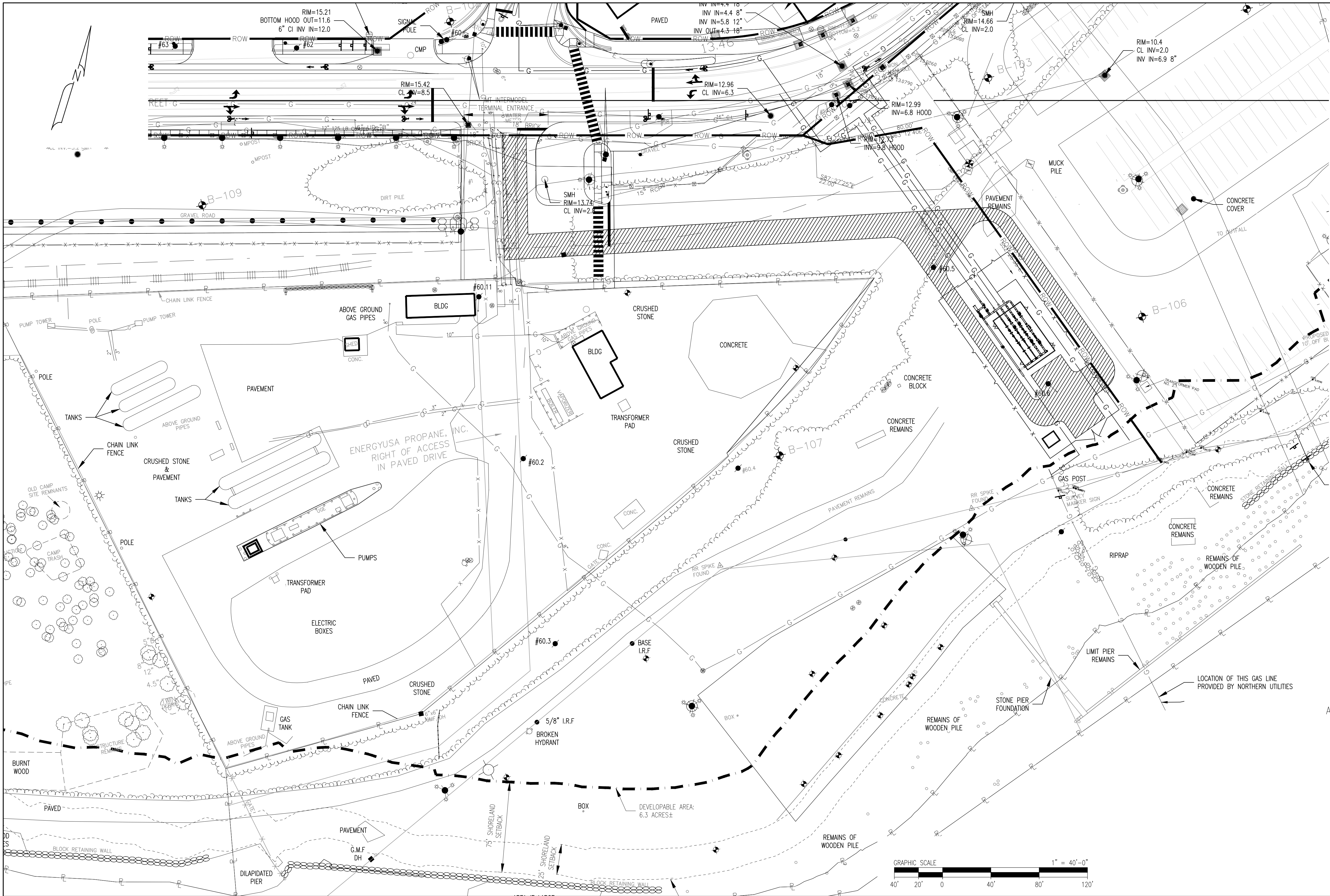
NOTES:  
 1. IMT SERVICE LINE CORRIDOR EASEMENT AREA (EXTENDING OUT 10FT FROM EITHER SIDE OF SERVICE LINE AS INSTALLED)

REV	BY	DATE	DESCRIPTION	DWG NO.	REFERENCE DRAWINGS	SEAL AND SIGNATURE

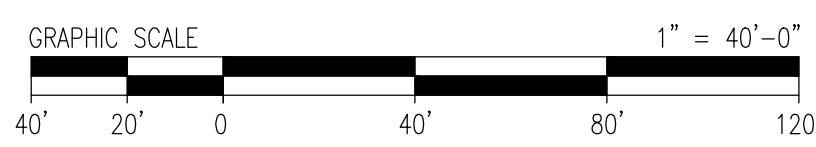
PRJ MANAGER: MARK D. WOOD	CLIENT INFORMATION
PRJ ENGINEER: MARK D. WOOD	
PRJ NAME: WEST COMMERCIAL STREET	
PRJ NUMBER: 5183	ME GAS OPERATIONS
PRJ MILESTONE:	
PRJ PHASE: DESIGN	
DESIGNED BY: MDW 03/18/16	DESIGN MANAGER: TIM BICKFORD
DRAFTED BY: RPC 03/18/16	REVIEWED BY:
CHECKED BY: SMR 03/18/16	DESIGN ENGINEER: BOB SCHUMMRICK
APPROVED BY: MDW 03/18/16	CHECKED BY:
	ACTIVATION ORDER:
	APPROVED BY:

SHEET TITLE	FIGURE 6
PROJECT NAME	WEST COMMERCIAL STREET REGULATOR STATION
PROJECT LOCATION	PORTLAND, ME 04101

	1600 Providence Highway Walpole, MA 02081 781.829.0524 processpipelineservices.com
	FILE NAME: 5183_C00 - FIGURES.DWG
PLOT DATE: 04/01/2016 3:30 PM	SCALE: 1" = 40'-0"
SIZE: 22X34	SHEET: A01
	REV: FIGURE 6



LEGEND	
EXISTING	PROPOSED
[Symbol]	BOUNDARY LINE
[Symbol]	CONTOUR MAJOR
[Symbol]	CONTOUR MINOR
[Symbol]	DRAINAGE
[Symbol]	EASEMENT
[Symbol]	ELECTRIC
[Symbol]	FENCE CHAIN LINK
[Symbol]	FENCE POST
[Symbol]	FENCE STOCKADE
[Symbol]	EDGE OF GRAVEL
[Symbol]	EDGE OF PAVEMENT
[Symbol]	EDGE OF RIVER
[Symbol]	EDGE OF WETLAND
[Symbol]	GAS
[Symbol]	GUARDRAIL
[Symbol]	OVER HEAD WIRES
[Symbol]	OVER HEAD TELEPHONE
[Symbol]	OVER HEAD ELECTRIC
[Symbol]	PROPERTY LINE
[Symbol]	RETAINING WALL
[Symbol]	RIGHT OF WAY
[Symbol]	SEWER
[Symbol]	SILT FENCE
[Symbol]	STONEWALL
[Symbol]	STREAM
[Symbol]	TELEPHONE
[Symbol]	TREELINE
[Symbol]	WATER



ACCESS EASEMENT AREA [Symbol]

- NOTES:
- ACCESS EASEMENT AREA (AS SHOWN WITHIN THE GAS REGULATOR EASEMENT AREA, AND EXTENDING IN A 20FT WIDE CORRIDOR FROM THE GAS REGULATOR EASEMENT AREA TO THE PUBLIC RIGHT-OF-WAY (WEST COMMERCIAL STREET) WHERE DEPICTED OR AS OTHERWISE LOCATED BY MDOT)
  - IN THE EVENT UNITIL'S EXISTING EASEMENT AREA DOES NOT PROVIDE SUFFICIENT SPACE FOR SNOW STORAGE, UNITIL WILL BE PERMITTED TO PUSH SNOW TO, AND STORE SNOW ON, SUCH AREAS ON THE SITE OUTSIDE ITS EASEMENT AREA AS MDOT DESIGNATES.
  - EASEMENT EXTENDS TO THE SITE BOUNDARY LINE AND DOES NOT EXTEND INTO RIGHT-OF-WAY.

REV	BY	DATE	DESCRIPTION	DWG NO.	REFERENCE DRAWINGS	SEAL AND SIGNATURE

PRJ MANAGER: MARK D. WOOD	CLIENT INFORMATION
PRJ ENGINEER: MARK D. WOOD	
PRJ NAME: WEST COMMERCIAL STREET	
PRJ NUMBER: 5183	
PRJ MILESTONE:	
PRJ PHASE: DESIGN	
DESIGNED BY: MDW 03/18/16	DESIGN MANAGER: TIM BICKFORD
DRAFTED BY: RPC 03/18/16	REVIEWED BY:
CHECKED BY: SMR 03/18/16	DESIGN ENGINEER: BOB SCHUMMRICK
APPROVED BY: MDW 03/18/16	ACTIVATION ORDER:

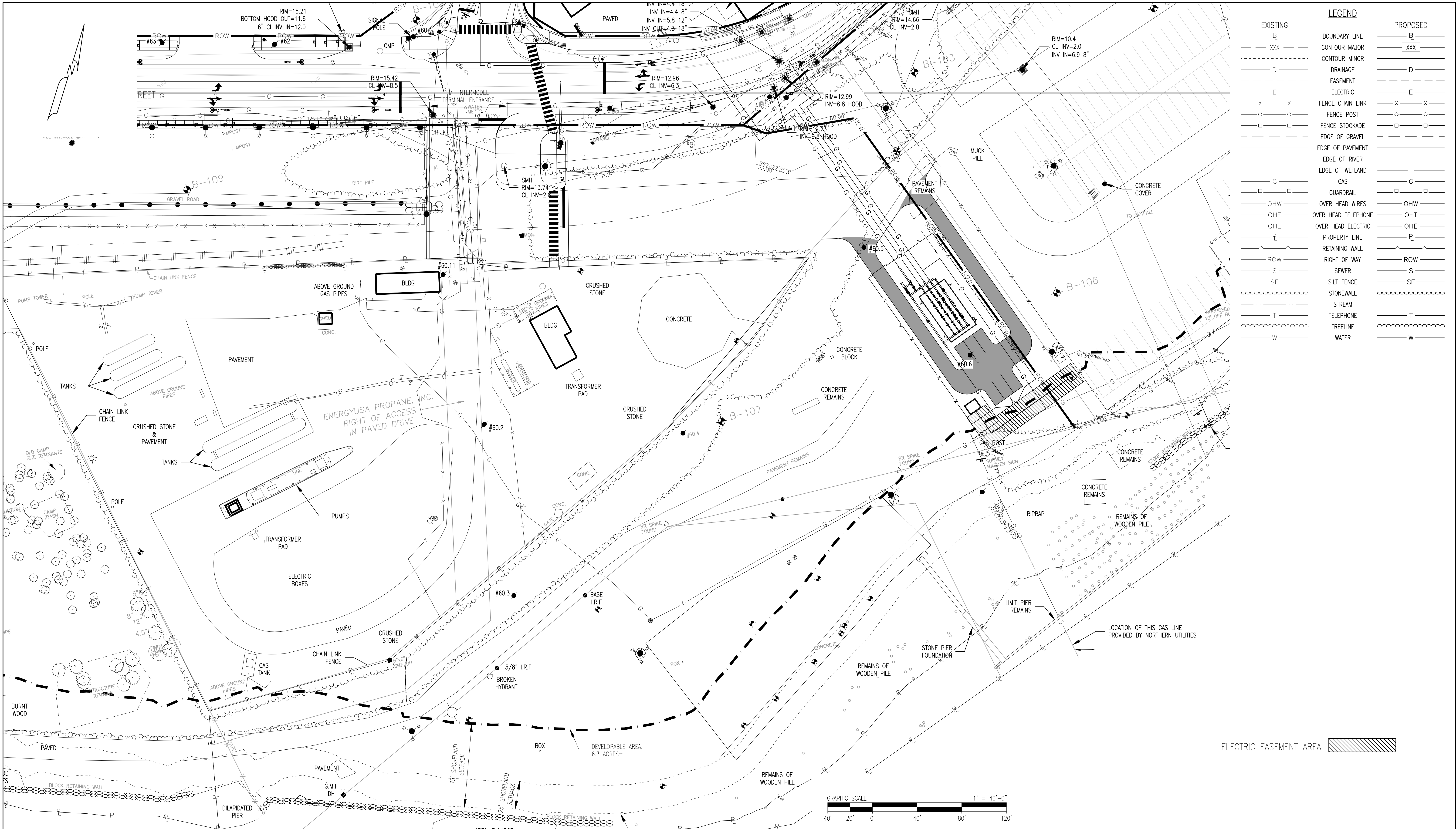
SHEET TITLE	FIGURE 7
PROJECT NAME	WEST COMMERCIAL STREET REGULATOR STATION
PROJECT LOCATION	PORTLAND, ME 04101

**PROCESS PIPELINE SERVICES**  
 1600 Providence Highway  
 Walpole, MA 02081  
 781.829.0524  
 processpipelineservices.com

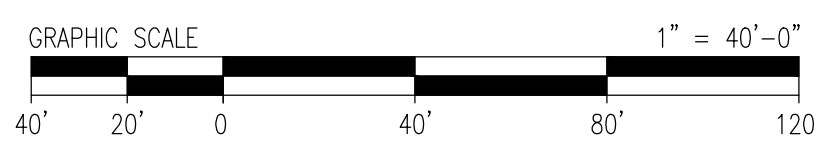
FILE NAME: 5183\_C00 - FIGURES.DWG  
 PLOT DATE: 04/01/2016 3:30 PM  
 SCALE: 1" = 40'-0"

SIZE	SHEET	REV
22X34	A01	

FIGURE 7



LEGEND	
EXISTING	PROPOSED



ELECTRIC EASEMENT AREA

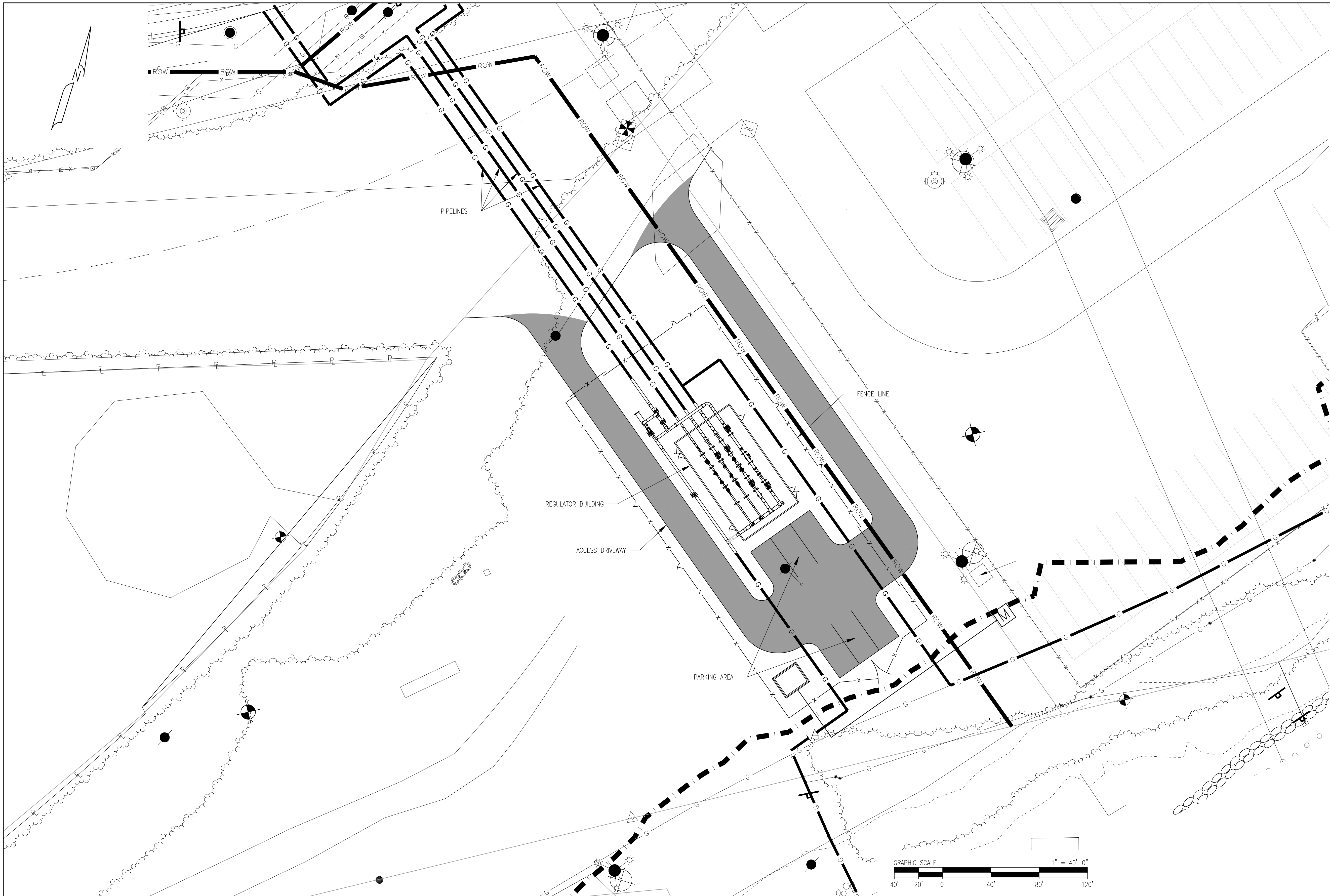
REV	BY	DATE	DESCRIPTION	DWG NO.	REFERENCE DRAWINGS	SEAL AND SIGNATURE

PRJ MANAGER: MARK D. WOOD	CLIENT INFORMATION
PRJ ENGINEER: MARK D. WOOD	 ME GAS OPERATIONS
PRJ NAME: WEST COMMERCIAL STREET	
PRJ NUMBER: 5183	
PRJ MILESTONE:	
PRJ PHASE: DESIGN	
DESIGNED BY: MDW 03/18/16	DESIGN MANAGER: TIM BICKFORD
DRAFTED BY: RPC 03/18/16	REVIEWED BY:
CHECKED BY: SMR 03/18/16	DESIGN ENGINEER: BOB SCHUMMRICK
APPROVED BY: MDW 03/18/16	ACTIVATION ORDER:
	CHECKED BY:
	APPROVED BY:

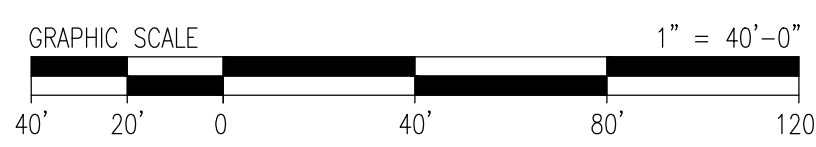
SHEET TITLE	FIGURE 8
PROJECT NAME	WEST COMMERCIAL STREET REGULATOR STATION
PROJECT LOCATION	PORTLAND, ME 04101

 1600 Providence Highway Walpole, MA 02081 781.829.0524 processpipelineservices.com	FILE NAME: 5183_C00 - FIGURES.DWG	SIZE	SHEET	REV
	PLOT DATE: 04/01/2016 3:30 PM	22X34	A01	
SCALE: 1" = 40'-0"				FIGURE 8






EXISTING	LEGEND	PROPOSED
[Symbol]	BOUNDARY LINE	[Symbol]
[Symbol]	CONTOUR MAJOR	[Symbol]
[Symbol]	CONTOUR MINOR	[Symbol]
[Symbol]	DRAINAGE	[Symbol]
[Symbol]	EASEMENT	[Symbol]
[Symbol]	ELECTRIC	[Symbol]
[Symbol]	FENCE CHAIN LINK	[Symbol]
[Symbol]	FENCE POST	[Symbol]
[Symbol]	FENCE STOCKADE	[Symbol]
[Symbol]	EDGE OF GRAVEL	[Symbol]
[Symbol]	EDGE OF PAVEMENT	[Symbol]
[Symbol]	EDGE OF RIVER	[Symbol]
[Symbol]	EDGE OF WETLAND	[Symbol]
[Symbol]	GAS	[Symbol]
[Symbol]	GUARDRAIL	[Symbol]
[Symbol]	OVER HEAD WIRES	[Symbol]
[Symbol]	OVER HEAD TELEPHONE	[Symbol]
[Symbol]	OVER HEAD ELECTRIC	[Symbol]
[Symbol]	PROPERTY LINE	[Symbol]
[Symbol]	RETAINING WALL	[Symbol]
[Symbol]	RIGHT OF WAY	[Symbol]
[Symbol]	SEWER	[Symbol]
[Symbol]	SILT FENCE	[Symbol]
[Symbol]	STONEWALL	[Symbol]
[Symbol]	STREAM	[Symbol]
[Symbol]	TELEPHONE	[Symbol]
[Symbol]	TRELINE	[Symbol]
[Symbol]	WATER	[Symbol]



REV	BY	DATE	DESCRIPTION	DWG NO.	REFERENCE DRAWINGS	SEAL AND SIGNATURE

PRJ MANAGER: MARK D. WOOD  
 PRJ ENGINEER: MARK D. WOOD  
 PRJ NAME: WEST COMMERCIAL STREET  
 PRJ NUMBER: 5183  
 PRJ MILESTONE:  
 PRJ PHASE: DESIGN  
 DESIGNED BY: MDW 03/18/16  
 DRAFTED BY: RPC 03/18/16  
 CHECKED BY: SMR 03/18/16  
 APPROVED BY: MDW 03/18/16

CLIENT INFORMATION



ME GAS OPERATIONS


DESIGN MANAGER: TIM BICKFORD  
 DESIGN ENGINEER: BOB SCHUMMRICK  
 ACTIVATION ORDER: 03/18/16

REVIEWED BY:  
 CHECKED BY:  
 APPROVED BY:

SHEET TITLE  
**Figure 9**  
 ALL RELOCATED FACILITIES

PROJECT NAME  
 WEST COMMERCIAL STREET  
 REGULATOR STATION

PROJECT LOCATION  
 PORTLAND, ME 04101



1600 Providence Highway  
 Walpole, MA 02081  
 781.829.0524  
 processpipelineservices.com

FILE NAME: 5183\_C00 - FIGURES.DWG  
 PLOT DATE: 04/01/2016 3:30 PM  
 SCALE: 1" = 40'-0"

SIZE	SHEET	REV
22X34	A01	

FIGURE 9