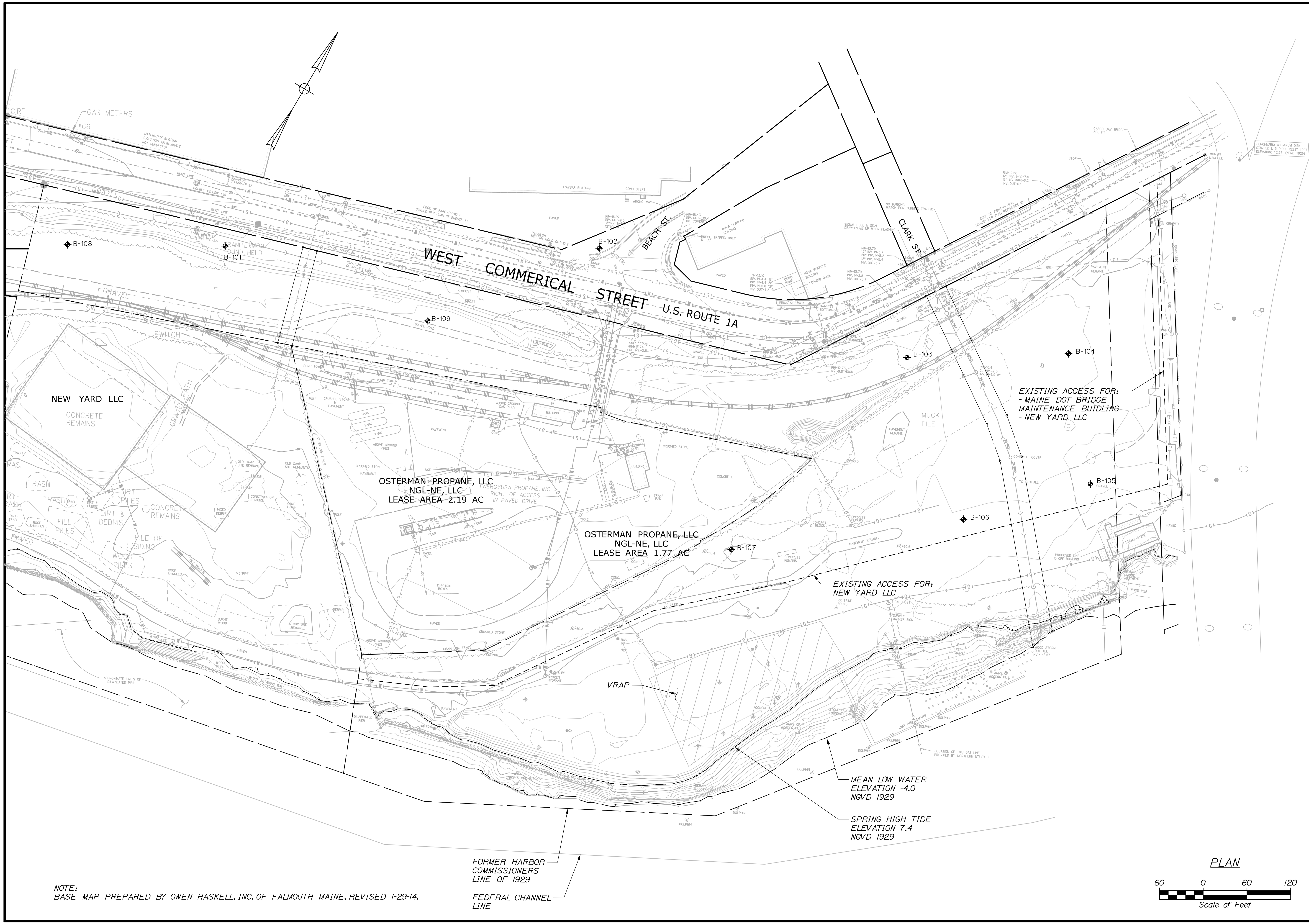


Date: 2/2/2015

Username:

Division: HIGHWAY

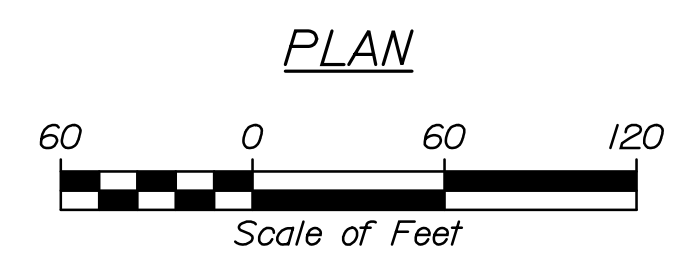
Filename: 006_ExistSitePlan3.dgn



NOTE: BASE MAP PREPARED BY OWEN HASKELL, INC. OF FALMOUTH MAINE, REVISED 1-29-14.

FORMER HARBOR COMMISSIONERS LINE OF 1929
FEDERAL CHANNEL LINE

MEAN LOW WATER ELEVATION -4.0 NGVD 1929
SPRING HIGH TIDE ELEVATION 7.4 NGVD 1929



| | | | |
|---|--------------|------------------------------|-------|
| STATE OF MAINE | | DEPARTMENT OF TRANSPORTATION | |
| PROJECT NUMBER 022809.20 | | WIN 022809.20 | |
| PROJ. MANAGER | J. KITTRIDGE | BY | DATE |
| DESIGN-DETAILED | HME | MFC | 06/14 |
| CHECKED-REVIEWED | CRM | CRM | 06/14 |
| DESIGN-DETAILED | - | - | - |
| DESIGN-DETAILED | - | - | - |
| REVISIONS 1 | - | - | - |
| REVISIONS 2 | - | - | - |
| REVISIONS 3 | - | - | - |
| REVISIONS 4 | - | - | - |
| FIELD CHANGES | - | - | - |
| PORTLAND INTERNATIONAL MARINE TERMINAL EXISTING LAYDOWN AND CONNECTING CORRIDOR CONNECTION PORTLAND CUMBERLAND COUNTY | | SIGNATURE | |
| EXISTING CONDITIONS PLAN | | P.E. NUMBER | |
| SHEET NUMBER | | DATE | |
| C03 | | | |
| 6 OF 116 | | | |