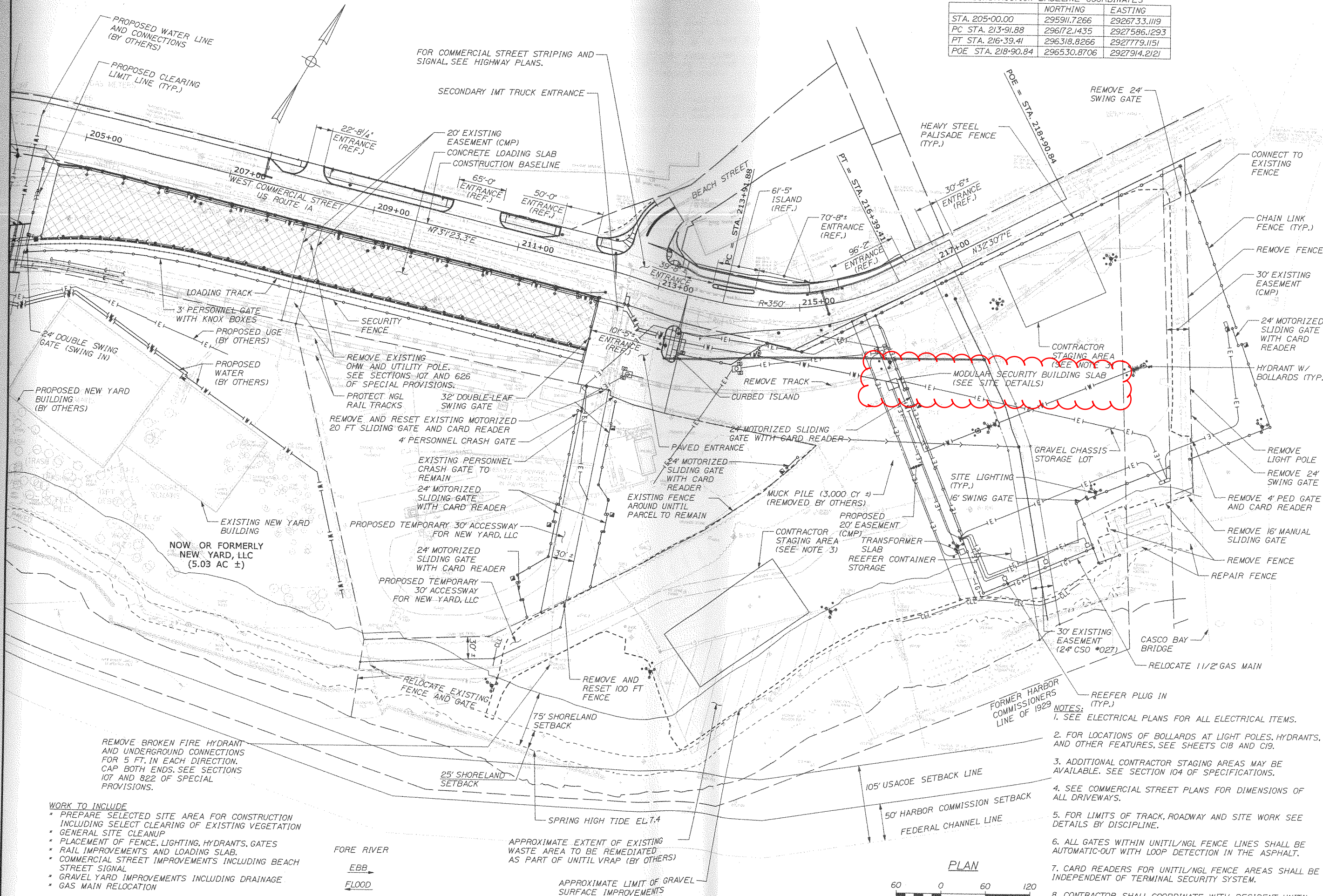


CONSTRUCTION BASELINE COORDINATES

	NORTHING	EASTING
STA. 205+00.00	29591.7266	2926733.1119
PC STA. 213+91.88	296172.1435	2927586.1293
PT STA. 216+39.41	296318.8266	2927779.1151
POE STA. 218+90.84	296530.8706	2927914.2121



STATE OF MAINE  
DEPARTMENT OF TRANSPORTATION  
PROJECT NUMBER 022809.20  
WIN 022809.20

DATE	BY	DESCRIPTION
06/15/07	JPC	DESIGN-DETAILED
06/15/07	CM	CHECKED-REVIEWED
		DESIGN-DETAILED
		REVISIONS 1
		REVISIONS 2
		REVISIONS 3
		REVISIONS 4
		FIELD CHANGES

PORTLAND INTERNATIONAL MARINE TERMINAL  
EXISTING LAYDOWN AND CONNECTING CORRIDOR CONNECTION  
PORTLAND CUMBERLAND COUNTY  
SITE PLAN

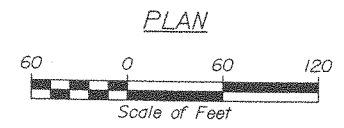
SHEET NUMBER  
**C08**  
11 OF 116

- WORK TO INCLUDE**
- \* PREPARE SELECTED SITE AREA FOR CONSTRUCTION INCLUDING SELECT CLEARING OF EXISTING VEGETATION
  - \* GENERAL SITE CLEANUP
  - \* PLACEMENT OF FENCE, LIGHTING, HYDRANTS, GATES
  - \* RAIL IMPROVEMENTS AND LOADING SLAB
  - \* COMMERCIAL STREET IMPROVEMENTS INCLUDING BEACH STREET SIGNAL
  - \* GRAVEL YARD IMPROVEMENTS INCLUDING DRAINAGE
  - \* GAS MAIN RELOCATION

FORE RIVER  
EBB  
FLOOD

APPROXIMATE EXTENT OF EXISTING WASTE AREA TO BE REMEDIATED AS PART OF UNITIL VRAP (BY OTHERS)

APPROXIMATE LIMIT OF GRAVEL SURFACE IMPROVEMENTS



- NOTES:**
1. SEE ELECTRICAL PLANS FOR ALL ELECTRICAL ITEMS.
  2. FOR LOCATIONS OF BOLLARDS AT LIGHT POLES, HYDRANTS, AND OTHER FEATURES, SEE SHEETS C18 AND C19.
  3. ADDITIONAL CONTRACTOR STAGING AREAS MAY BE AVAILABLE. SEE SECTION 104 OF SPECIFICATIONS.
  4. SEE COMMERCIAL STREET PLANS FOR DIMENSIONS OF ALL DRIVEWAYS.
  5. FOR LIMITS OF TRACK, ROADWAY AND SITE WORK SEE DETAILS BY DISCIPLINE.
  6. ALL GATES WITHIN UNITIL/NGL FENCE LINES SHALL BE AUTOMATIC-OUT WITH LOOP DETECTION IN THE ASPHALT.
  7. CARD READERS FOR UNITIL/NGL FENCE AREAS SHALL BE INDEPENDENT OF TERMINAL SECURITY SYSTEM.
  8. CONTRACTOR SHALL COORDINATE WITH RESIDENT, UNITIL, AND NGL TO DETERMINE OPTIMAL LOCATION OF GATES WITHIN THOSE YARDS.