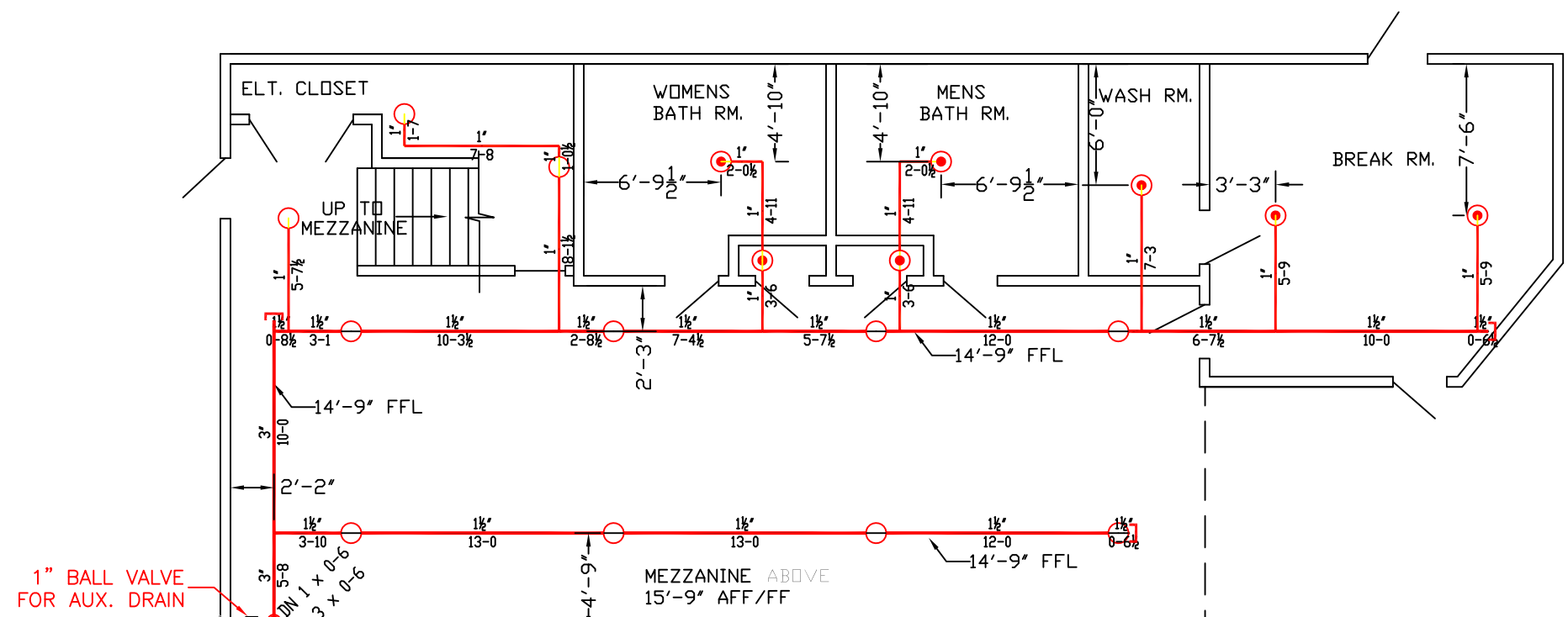


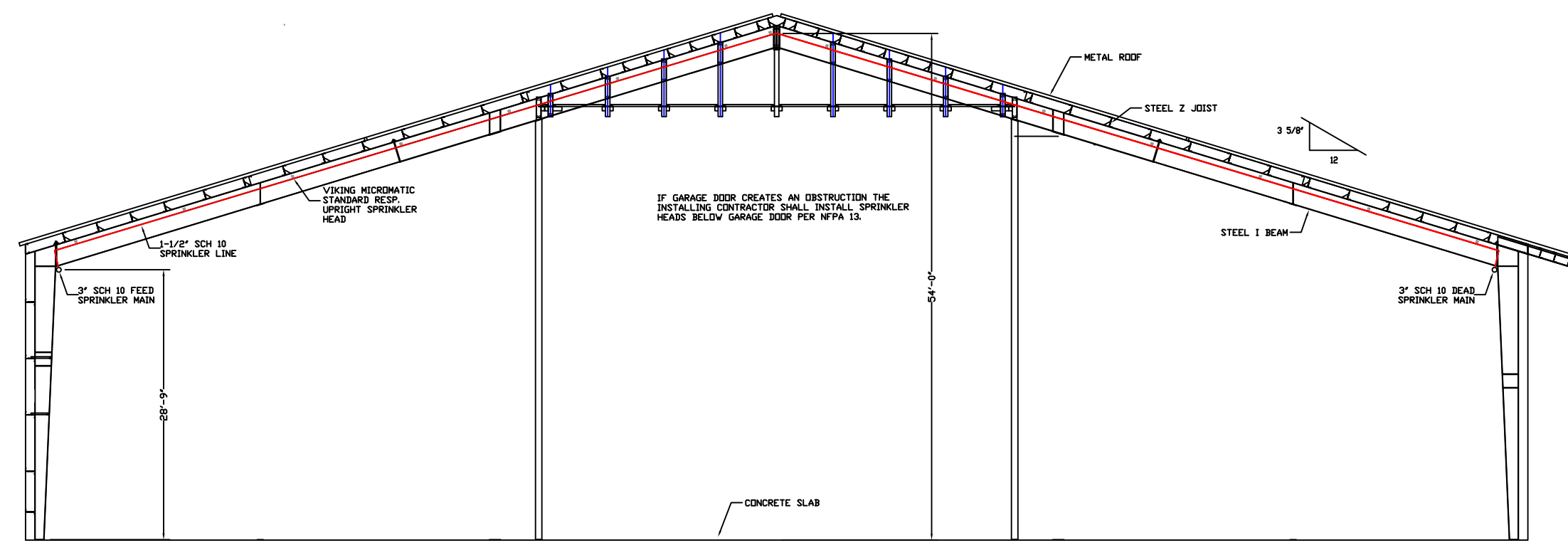
HYD. DESIGN CRITERIA
(NFPA 13 2010 ed. - WET)

LOCATION=YACHT STORAGE & REPAIR BLDG.
HAZARD CLASSIFICATION: ORDINARY HAZARD (2)
DENSITY= 2 GPM/SQ.FT.
AREA OF OPERATION= 1950 SQ. FT.
INSIDE HOSE DEMAND: 0 GPM
OUTSIDE HOSE DEMAND: 250 GPM
NO. OF SPRINKLERS= 18

SYSTEM DEMAND (INCLUDING HOSE) @
BASE OF RISER= 805-GPM 79.6-PSI
SAFETY MARGIN= 23.5-PSI



BATH & BREAK RM.
TOTAL PROTECTED AREA 1,662 SQ.FT.
SCALE 1/8" = 1'-0"



SECTION VIEW 'A'
SCALE : N.T.S.



SITE PLAN
SCALE: N.T.S.



NEW YARD YACHT BUILDING (WET)
TOTAL PROTECTED AREA 27,820 SQ.FT.
SCALE 1/8" = 1'-0"

PROJECT INFORMATION:
SCOPE: The fire protection project consists of providing a wet sprinkler systems to serve a yacht storage and repair building. The sprinkler system has been designed with the classification of occupancy being ordinary hazard group 2.

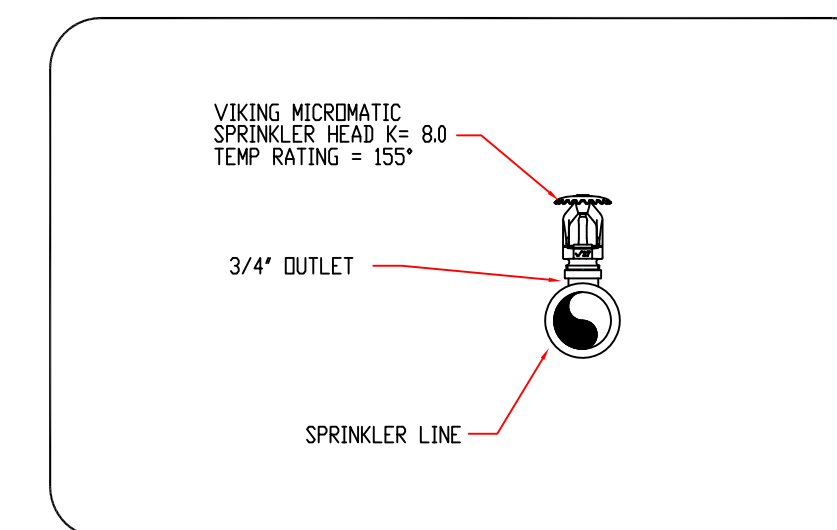
WATER SUPPLY: There are two dry existing systems and a new wet system supplied by a 6" underground main connected to the public water supply. Two 4" FDC will be installed for use by the Fire Department.

CONSTRUCTION TYPE: Construction type is "steel I beam construction, z joist and g.w.b. with steel framing for break room and bathroom areas.

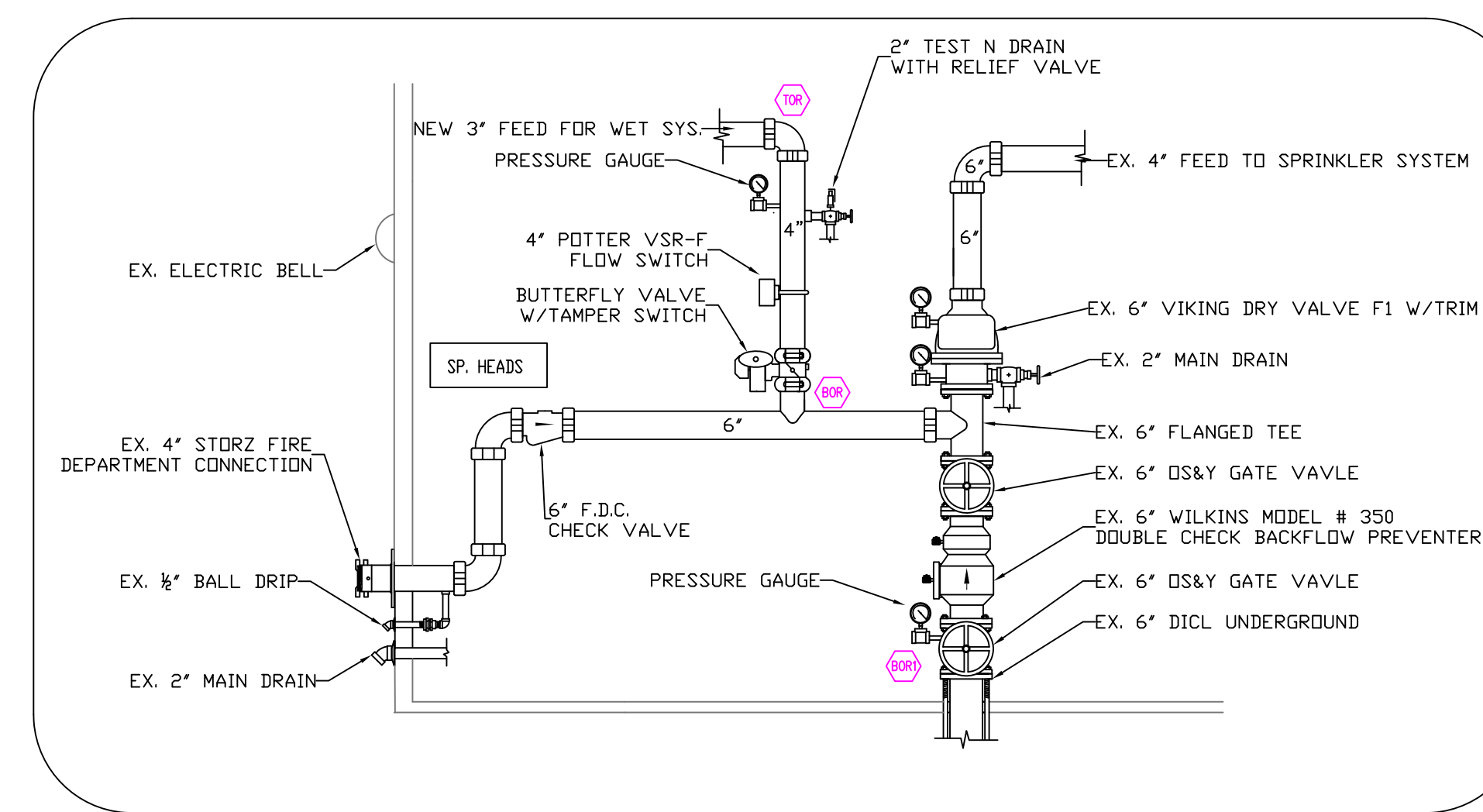
CODE REFERENCES:
*NFPA 13 2010 ed.

SPECIAL INSTRUCTIONS TO INSTALLER:
Install sprinkler heads within 22 inches down from ceiling but within 1" to 6" of steel z joist.

- SPRINKLER SYSTEM NOTES:**
- * DESIGN AND INSTALLATION SHALL CONFORM TO N.F.P.A. # 13 (2010), LOCAL FIRE AND BLDG. DEPTs.
 - * HANGER INSTALLATION AND SPACING SHALL BE IN ACCORDANCE WITH N.F.P.A. #13
 - * ALL EQUIPMENT TO BE UL LISTED FOR FIRE PROTECTION USE.
 - * FIELD FOREMAN TO VERIFY LOCATION OF HIGH TEMPERATURE SPRINKLERS AND INSTALL HIGH TEMPERATURE SPRINKLERS IN ACCORDANCE WITH N.F.P.A. #13
 - * IF REQUIRED, SLEEVES THROUGH WALLS AND FLOORS SHALL BE SCH. 10 LW. GALVANIZED AND PACKED WITH NONCOMBUSTIBLE, SMOKE PROOF, AND WATERPROOF FIRE SEALANT.
 - * INSTALLING CONTRACTOR SHALL PROVIDE AUXILIARY DRAINS AT ALL LOW POINTS ON DRY SYSTEM.
 - * PIPE 1-1/2" AND LARGER TO BE STEEL SCHEDULE 10 WITH GROOVED FITTINGS.
 - * PIPE 1-1/4" AND SMALLER TO BE STEEL SCHEDULE 40 WITH SCREWED FITTINGS.



SPRINKLER HEAD DETAIL
SCALE: N.T.S.



RISER DETAIL
SCALE: N.T.S.

NO.	DATE	DESCRIPTION

SPECIAL APPLICATIONS:
NO. DESCRIPTION

"VIKING" MICROMATIC STANDARD RESPONSE SPRINKLER MODEL #VK200
TEMP. RATING: 155°F
K=8.0
130 SQ. FT SPACING

"VIKING" MICROMATIC STANDARD RESPONSE SPRINKLER MODEL #VK102
TEMP. RATING: 155°F
K=5.6
225 SQ. FT SPACING

LEGEND:

	SYSTEM RISER
	PITCH FOR DRY PIPE
	1/4" FOR MAINS
	1/2" FOR LINES
	HYDRAULIC CALC. POINT
	STEEL DRY SYS. PIPING
	STEEL WET SYS. PIPING
	UNDERGROUND PIPING

Contractor:
Advanced Fire Protection Services, LLC
P.O. Box 81
Minot, Me 04258
207-513-6480

Project:
NEW YARD YACHT BUILDING PHASE #2

NFPA 13 SPRINKLER SYSTEM

Drawn by: TIMOTHY FORTIN
RMS # 866
NICET LEVEL III CERT. # 122193
Scale: 1/8" = 1'-0"

Drawn by: TMF
Date: 9/9/2014
Approval by: Fire Dept.

LOCATION:
40 WEST COMMERCIAL ST.
PORTLAND, ME 04101

SHEET NUMBER

FP-1

OF 1

NOTE: USE OF THESE PLANS BY THE INSTALLING CONTRACTOR SHALL INDICATE ACCEPTANCE OF ALL THE INFORMATION PROVIDED ON THESE PLANS AND SHALL TRANSFER FINAL RESPONSIBILITY OF THE CORRECTNESS OF THE SYSTEM TO THE INSTALLING CONTRACTOR. ANY DESIGN ERRORS SHALL BE CORRECTED AT THE CONTRACTOR'S EXPENSE. NOTE: ADDITIONAL SPRINKLER HEADS OVER AND ABOVE THOSE SPECIFICALLY NOTED ON THESE DRAWINGS MAY BE REQUIRED DEPENDING ON THE REQUIRED ROUTING AROUND TRUSSES, HVAC DUCTWORK, HOODS AND OTHER SIMILAR OBSTRUCTIONS. FIELD VERIFY EXISTING CONDITIONS DURING CONSTRUCTION AND PROVIDE ANY AND ALL ADDITIONAL HEADS AS REQUIRED FOR FULL COVERAGE AND A COMPLETE, CODE COMPLIANT SYSTEM.