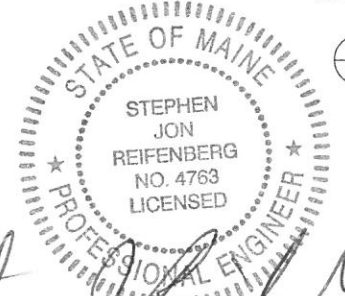
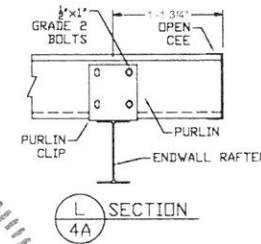
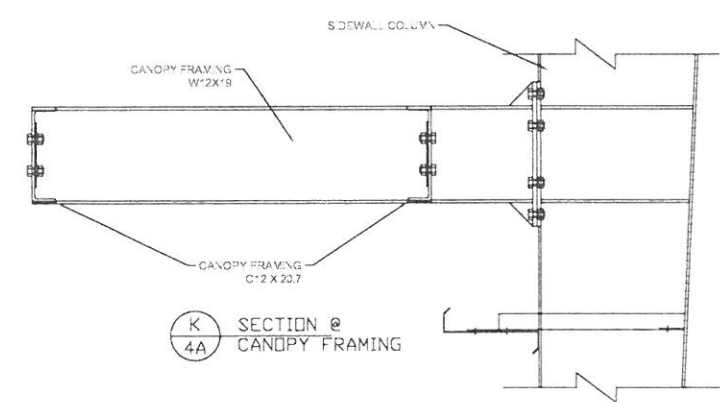
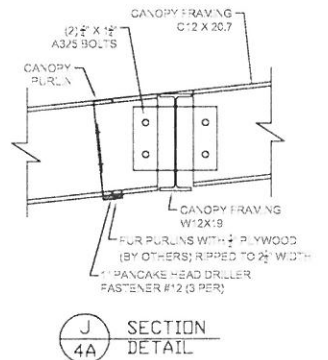
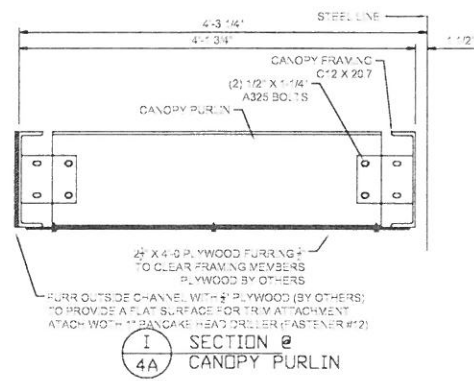
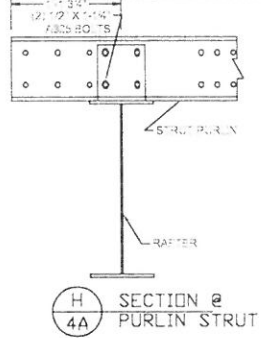
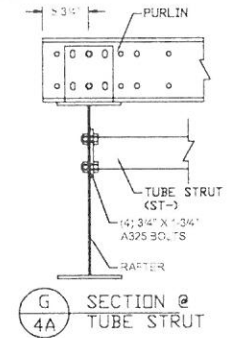
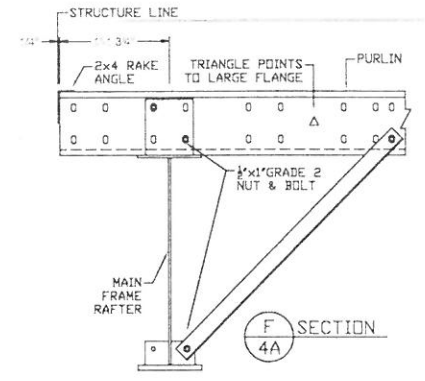
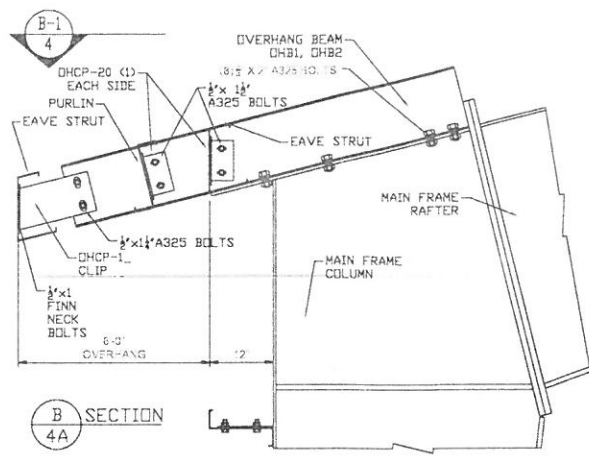
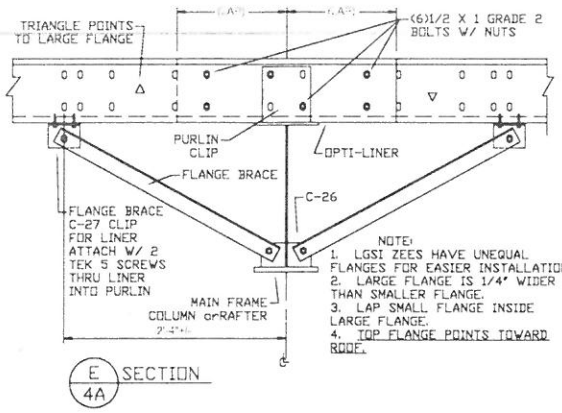


1. PUT GRIP THRU EYE BOLT
2. SLIDE CABLE UP TO PAINT MARK
3. WRAP ONE LEG OF GRIP AROUND CABLE
4. WRAP 2ND LEG AROUND 1ST & CABLE
5. CHECK LENGTH BEFORE ASSEMBLING THE OPPOSITE END

CABLE SIZE (MINIMAL)	EYE BOLT SIZE	GRIP COLOR	GRIP LENGTH
1/4"	5/8"	YELLOW	19-1/2"
5/16"	5/8"	BLACK	21"
3/8"	5/8"	ORANGE	26"
1/2"	7/8"	BLUE	34"

- NOTES:
1. SCREW THROUGH ANGLE INTO PURLIN
  2. SEE LAYOUT FOR ROWS PER BAY
  3. SPACE EVENLY ACROSS BAYS



*Stephen Reifenberg*  
9/12/14

ERECTION REQUIRES MINOR ADJUSTMENTS

ESSEX STRUCTURAL STEEL CO., INC. CORTLAND, NEW YORK 13045		PROJECT: CANAL LANDING 100 WEST COMMERCIAL STREET PORTLAND, MAINE 04101	SHEET: <b>4A</b>
REVISIONS	CONTRACTOR: IRISHSPAN INDUSTRIES PROJECT NO.: S-1468	TITLE: ROOF FRAMING DETAILS	
DATE: 7/1/14	SCALE: D.N.S.	DRAWN BY: JCK	