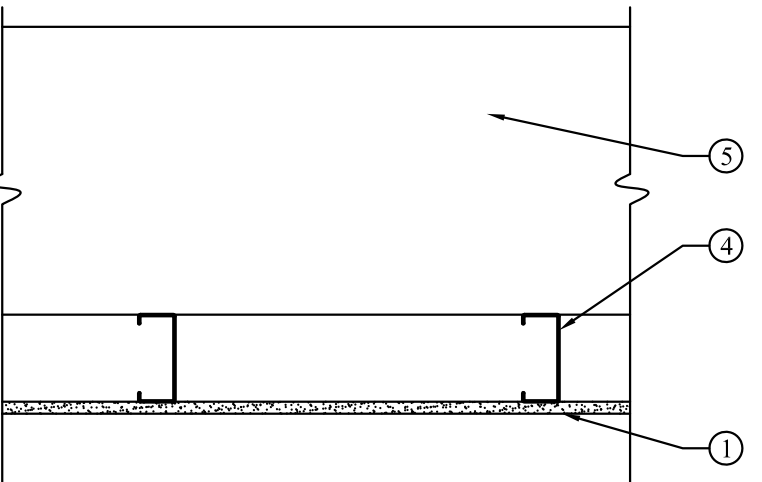


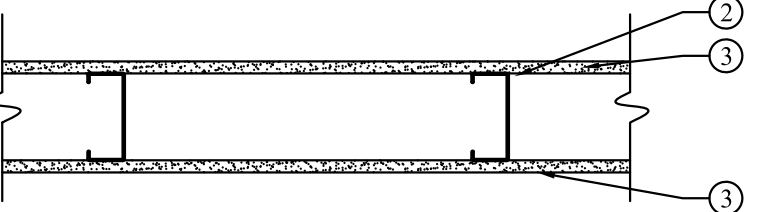
WALL TYPES



W1 FURRED WALL AT EXTERIOR WALL

W1 FURRED WALL
NO FIRE RATING REQUIRED

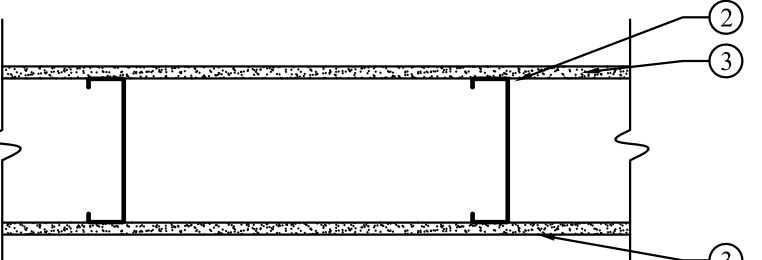
1. **Steel Studs** — Channel shaped, supplied with cutouts, friction-fitted into floor and ceiling runners and spaced a max 24 in. O.C. Studs cut 1/2 in. less than assembly height and evenly staggered between the two rows of floor and ceiling runners. Studs fabricated from min No. 25 MSG galv steel, min 3-5/8 in. wide by 1-5/8 in. deep with 3/8 in. folded back return flange legs. Reference structural notes on plans.
2. **Gypsum Board** — 5/8 in. thick, attached to wood studs with Type S steel screws spaced 8 in. O.C. along edges of board and 12 in. O.C. in the field of the board. Joints oriented vertically and staggered on opposite sides of the assembly 48 in. O.C. NOTE: Bottom edge of all gyp held 3/8 inch above floor. Seal with caulk.
3. **Joint Tape and Compound** — Vinyl, dry or pre-mixed joint compound, applied in two coats to joints and screw heads; paper tape, 2 in. wide, embedded in first layer of compound over all joints. Joints reinforced. Paper tape and joint compound may be omitted when gypsum boards are supplied with square edges.
4. **Exterior metal panel wall** - 1/2" thick.



W2 TYPICAL UNRATED INTERIOR PARTITION

W2 UNRATED PARTITION WALL ASSEMBLY

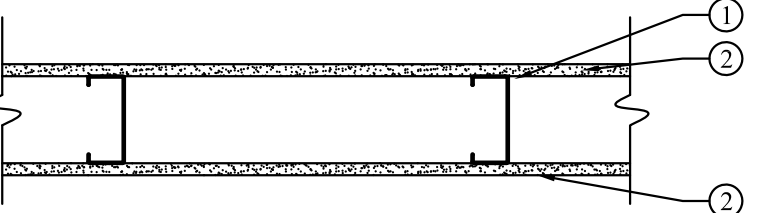
1. **Floor and Ceiling Runners** — Channel shaped, attached to floor and ceiling in two rows, a min 1 in. apart, with steel fasteners spaced 24 in. O.C. Runners fabricated from min No. 25 MSG galv steel, 1-1/4 in. deep and 3-5/8 in. wide.
2. **Steel Studs** — Channel shaped, supplied with cutouts, friction-fitted into floor and ceiling runners and spaced a max 24 in. O.C. Studs cut 1/2 in. less than assembly height and evenly staggered between the two rows of floor and ceiling runners. Studs fabricated from min No. 25 MSG galv steel, min 3-5/8 in. wide by 1-5/8 in. deep with 3/8 in. folded back return flange legs. Reference structural notes on plans.
3. **Gypsum Board** — 5/8 in. thick, 4 ft wide, attached to wood studs with Type S steel screws spaced 8 in. O.C. along edges of board and 12 in. O.C. in the field of the board. Joints oriented vertically and staggered on opposite sides of the assembly 48 in. O.C.
4. **Joint Tape and Compound** — Vinyl, dry or pre-mixed joint compound, applied in two coats to joints and screw heads; paper tape, 2 in. wide, embedded in first layer of compound over all joints. As an alternate, nominal 3/32 in. thick gypsum veneer plaster may be applied to the entire surface of classified veneer baseboard. Joints reinforced. Paper tape and joint compound may be omitted when gypsum boards are supplied with square edges.



W3 TYPICAL UNRATED INTERIOR PARTITION

W3 UNRATED PARTITION WALL ASSEMBLY

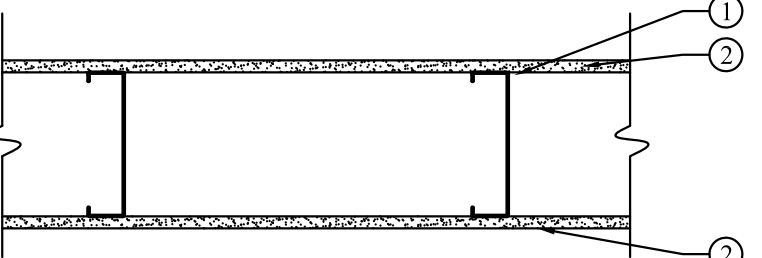
1. **Floor and Ceiling Runners** — Channel shaped, attached to floor and ceiling in two rows, a min 1 in. apart, with steel fasteners spaced 24 in. O.C. Runners fabricated from min No. 25 MSG galv steel, 1-1/4 in. deep and 6 in. wide.
2. **Steel Studs** — Channel shaped, supplied with cutouts, friction-fitted into floor and ceiling runners and spaced a max 24 in. O.C. Studs cut 1/2 in. less than assembly height and evenly staggered between the two rows of floor and ceiling runners. Studs fabricated from min No. 25 MSG galv steel, min 6 in. wide by 1-5/8 in. deep with 3/8 in. folded back return flange legs. Reference structural notes on plans.
3. **Gypsum Board** — 5/8 in. thick, 4 ft wide, attached to wood studs with Type S steel screws spaced 8 in. O.C. along edges of board and 12 in. O.C. in the field of the board. Joints oriented vertically and staggered on opposite sides of the assembly 48 in. O.C.
4. **Joint Tape and Compound** — Vinyl, dry or pre-mixed joint compound, applied in two coats to joints and screw heads; paper tape, 2 in. wide, embedded in first layer of compound over all joints. As an alternate, nominal 3/32 in. thick gypsum veneer plaster may be applied to the entire surface of classified veneer baseboard. Joints reinforced. Paper tape and joint compound may be omitted when gypsum boards are supplied with square edges.



W4 TYPICAL 1 HR RATED INTERIOR PARTITION

W4 1-HOUR WALL ASSEMBLY

- G.A. FILE NO. WP2340
Fire Test: UL R1319-93, 94, 129; UL Des. U311
1. **Steel Studs** — 3 5/8" steel studs 24" O.C.
 2. **Wallboard, Gypsum** — 5/8" proprietary type X gypsum wallboard applied parallel to channels with 1 1/4" Type W drywall screws 12" o.c. End joints backed with resilient channels. Vertical joints staggered 48" on opposite sides.
- REFERENCE WALL SECTION ON THIS SHEET FOR BARRIER CONTINUITY



W5 TYPICAL 1 HR RATED INTERIOR PARTITION

W5 1-HOUR WALL ASSEMBLY

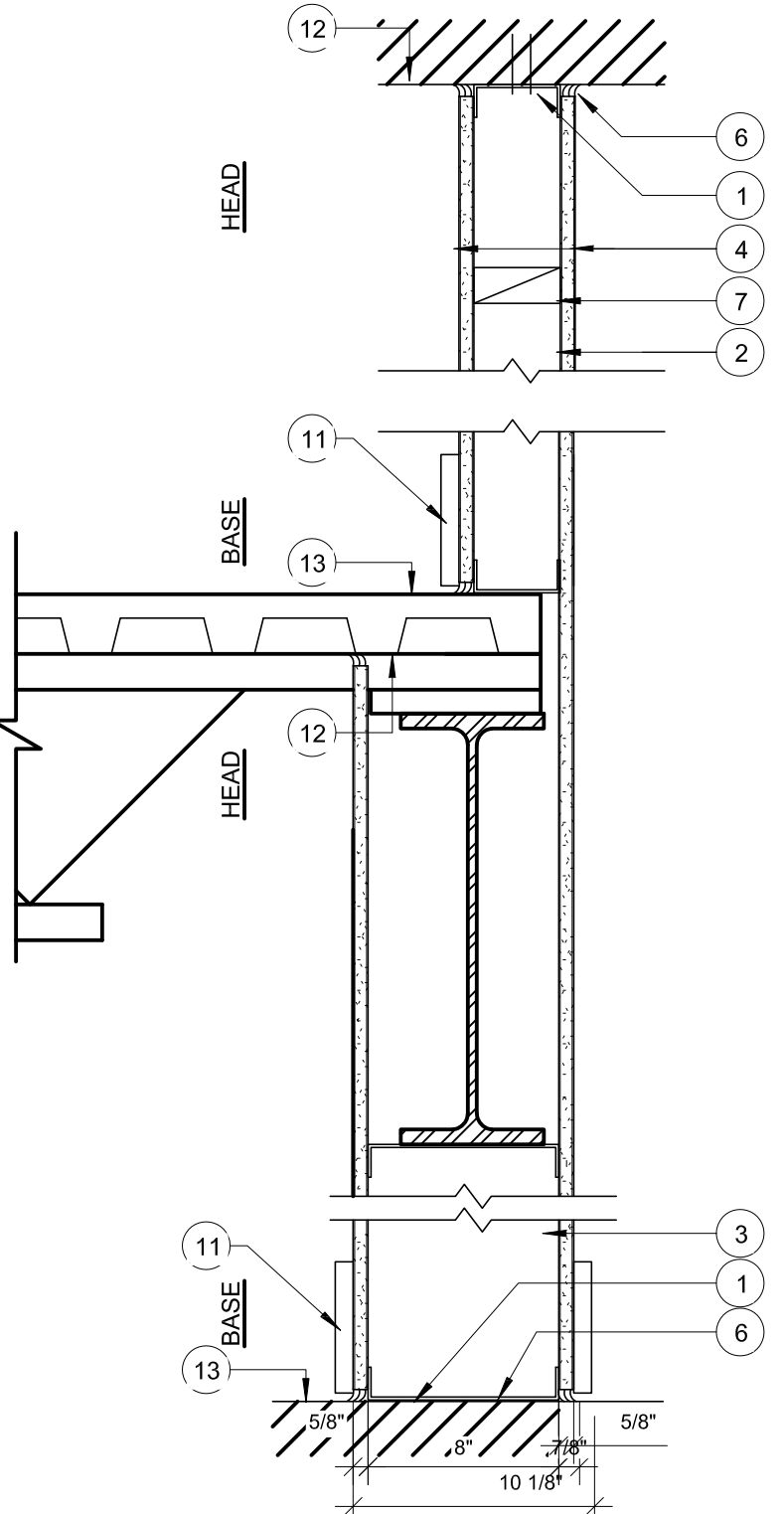
- G.A. FILE NO. WP2340
Fire Test: UL R1319-93, 94, 129; UL Des. U311
1. **Steel Studs** — 6" steel studs 24" O.C.
 2. **Wallboard, Gypsum** — 5/8" proprietary type X gypsum wallboard applied parallel to channels with 1 1/4" Type W drywall screws 12" o.c. End joints backed with resilient channels. Vertical joints staggered 48" on opposite sides.
- REFERENCE WALL SECTION THIS SHEET FOR BARRIER CONTINUITY



W6 TYPICAL 1 HR RATED INTERIOR PARTITION

W6 1-HOUR WALL ASSEMBLY

- G.A. FILE NO. WP2340
Fire Test: UL R1319-93, 94, 129; UL Des. U311
1. **Steel Studs** — 8" steel studs 24" O.C.
 2. **Wallboard, Gypsum** — 5/8" proprietary type X gypsum wallboard applied parallel to channels with 1 1/4" Type W drywall screws 12" o.c. End joints backed with resilient channels. Vertical joints staggered 48" on opposite sides.
- REFERENCE WALL SECTION THIS SHEET FOR BARRIER CONTINUITY



1 HR NON-BEARING FIRE BARRIER
DESIGN NUMBER - UL U451

LABEL 1 HR

1. **CONT. METAL FLOOR AND CEILING RUNNERFASTENERS @ 2'-0" O.C. MAX. WITHIN 1" OF ENDS**
2. **STEEL STUDS 3 5/8" STEEL STUDS 24" O.C.**
3. **STEEL STUDS 8" STEEL STUDS 24" O.C.**
4. **TYPE X GYPSUM BOARD - BD, EACH SIDE, APPLIED PERPENDICULAR TO STUDS WITH 1" TYPE S DRYWALL SCREWS 8" O.C. AT VERT. JNTS AND INTERMEDIATE STUDS AND 12" O.C. AT TOP AND BOTTOM RUNNER. SEE NOTES FOR GYP. BD. TYPE (STAGGER GYP. BD. JNTS 24" ON NON-FURRED SIDE.)**
5. **SEALANT - UL AND STC LISTED SEALANT, FULL PERIMETER BOTH SIDES.**
6. **BLOCKING - WOOD BLOCKING @ 10'-0" O.C. VERTICAL.**
7. **TAPE AND COMPOUND - (NOT SHOWN) COMPOUND, APPLIED IN TWO COATS TO JOISTS AND SCREW HEADS. PAPER TAPE, 2 IN. WIDE, EMBEDDED IN FIRST LAYER OF COMPOUND OVER ALL JOINTS.**
8. **SCHEDULED BASE SEE ID UNDERSIDE OF STRUCTURE TOP OF STRUCTURE**
9. -
10. -
11. -
12. -
13. -