

Prepared For:
Canal Landing / New Yard LLC
100 West Commercial St. Portland, ME

Consulting Engineer:

Architect:
ARCHETYPE architects
48 Union Wharf Portland, Maine 04101
(207) 772-6022 Fax (207) 772-4056

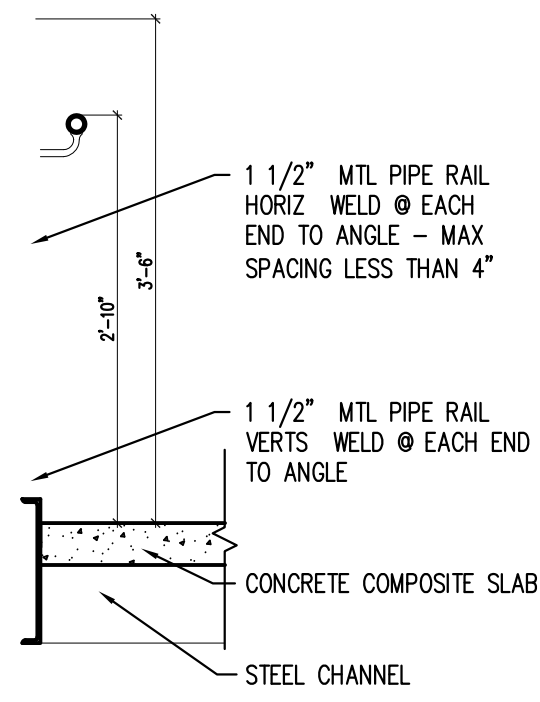
Project:
Canal Landing / New Yard
100 West Commercial St. Portland, ME

Revisions:

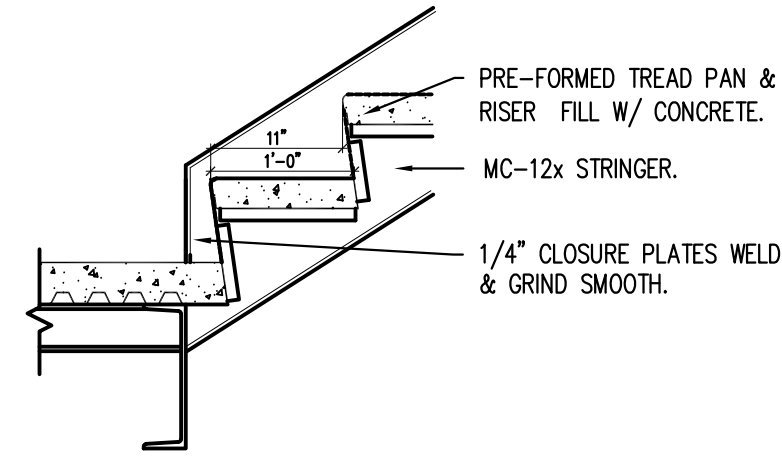
Date: 25 September 2014
Scale: AS NOTED

STAIR SECTIONS AND DETAILS

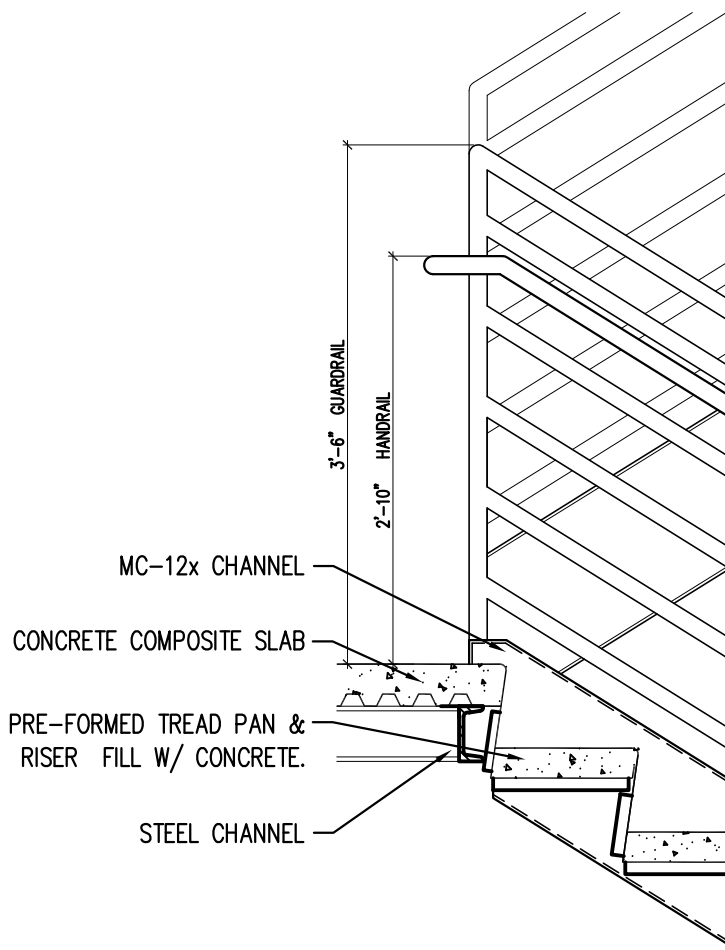
A3.12



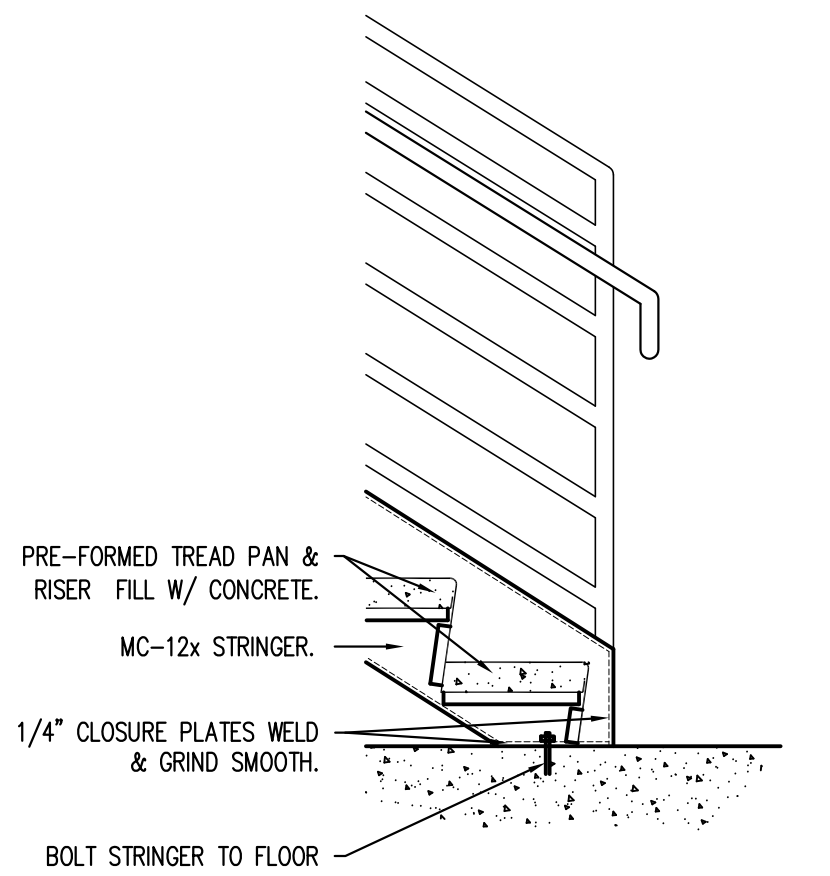
10 STAIR DETAIL
SCALE: 3/4"=1'-0"



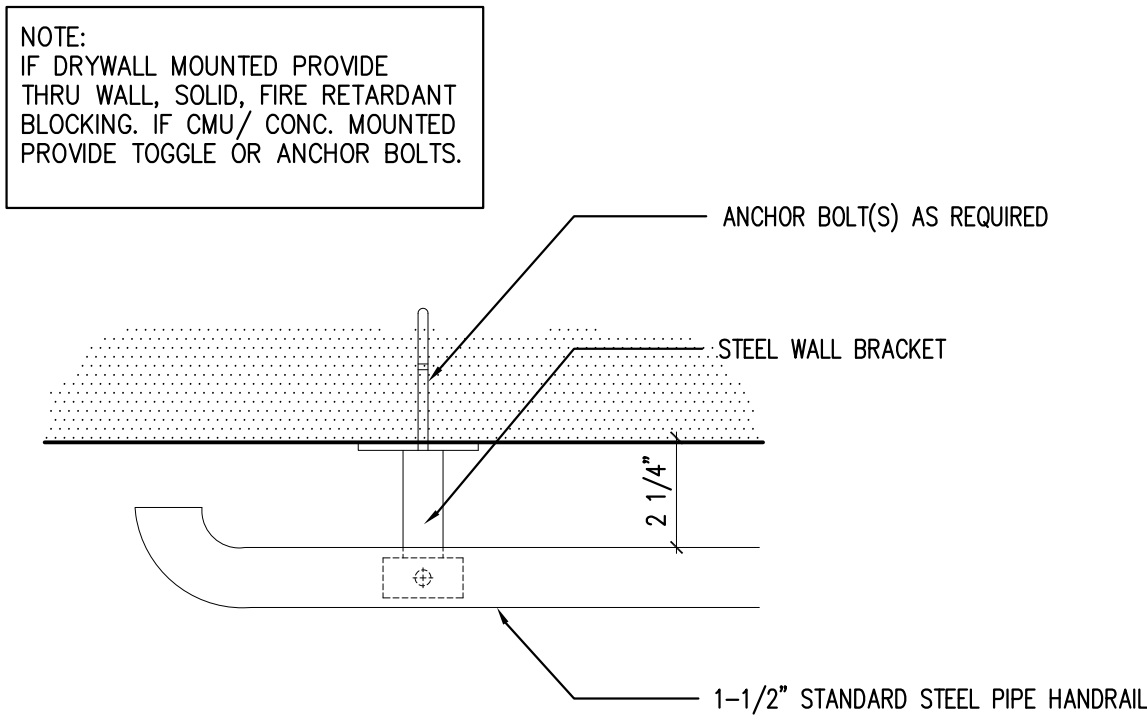
9 STAIR DETAIL
SCALE: 3/4"=1'-0"



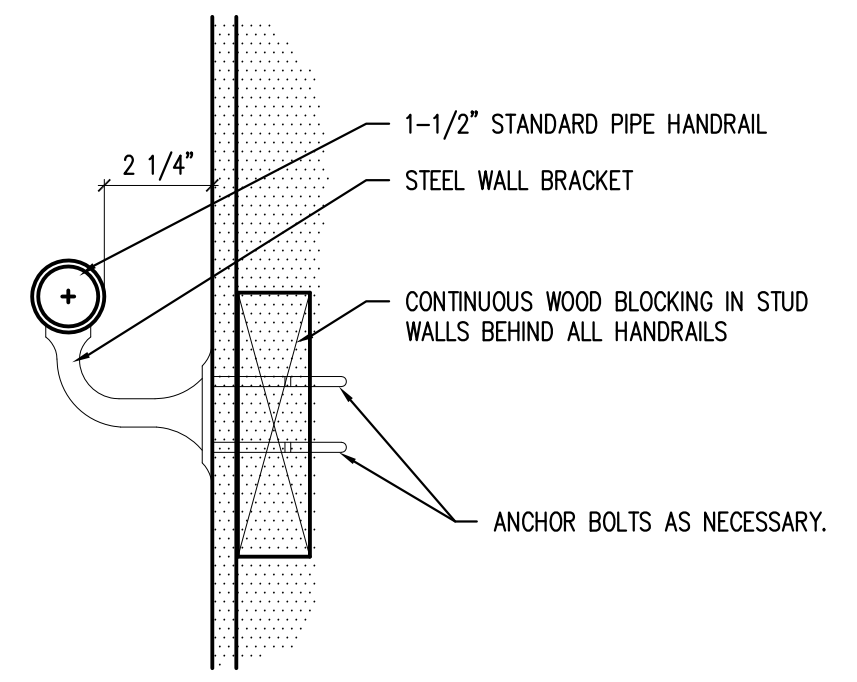
8 STAIR DETAIL
SCALE: 3/4"=1'-0"



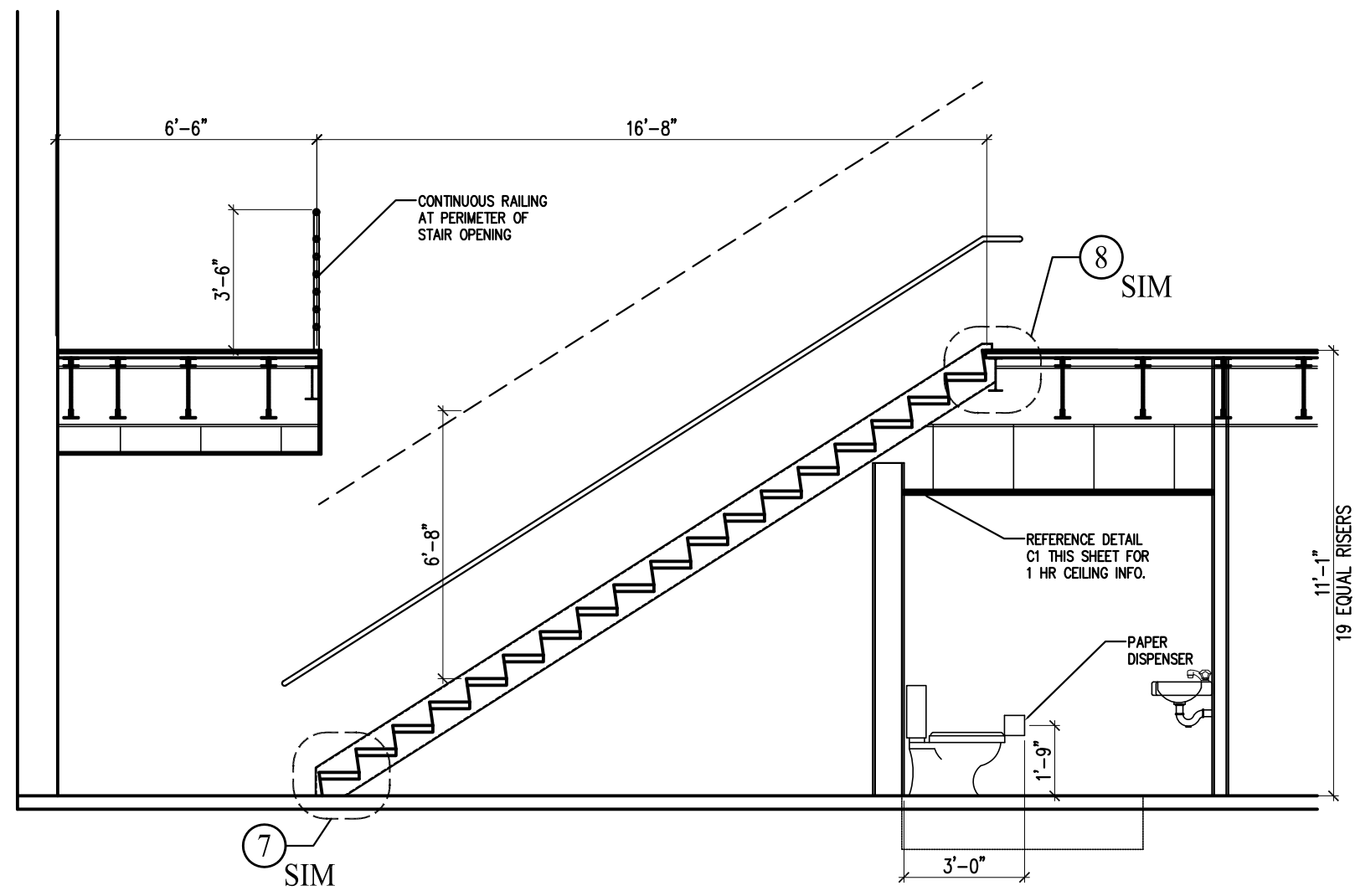
7 STAIR DETAIL
SCALE: 3/4"=1'-0"



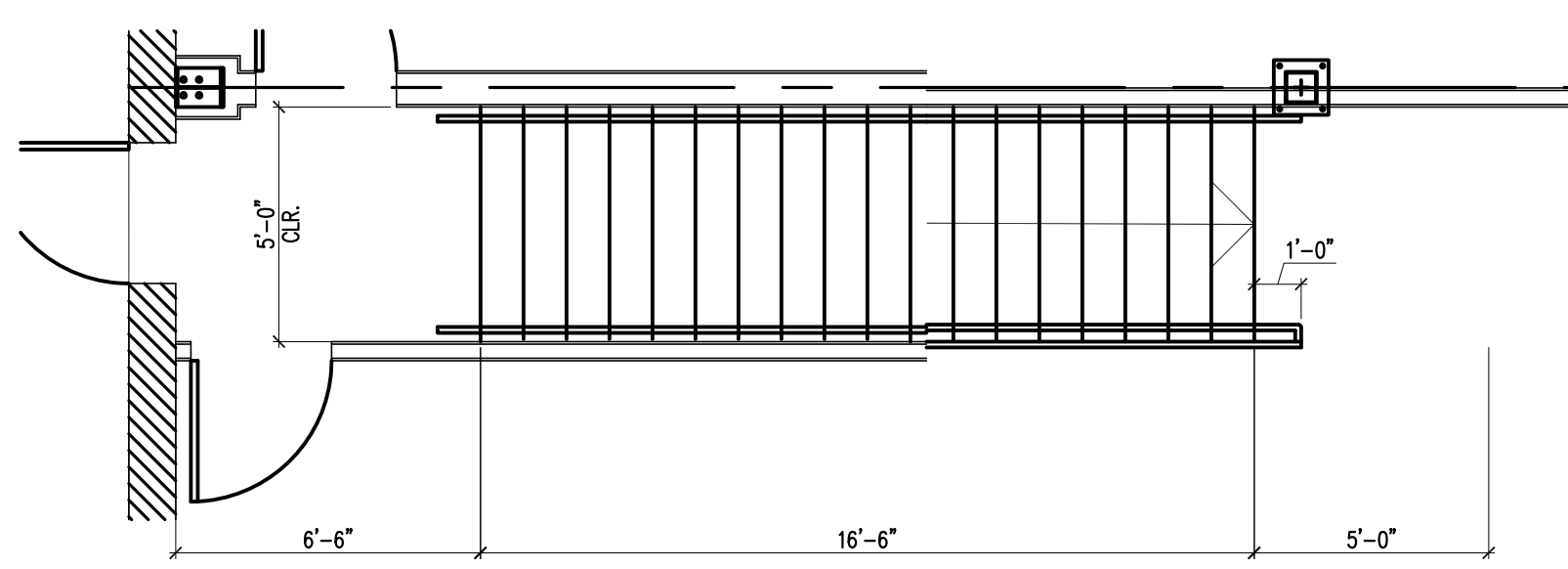
6 HANDRAIL DETAIL
SCALE: 1 1/2"=1'-0"



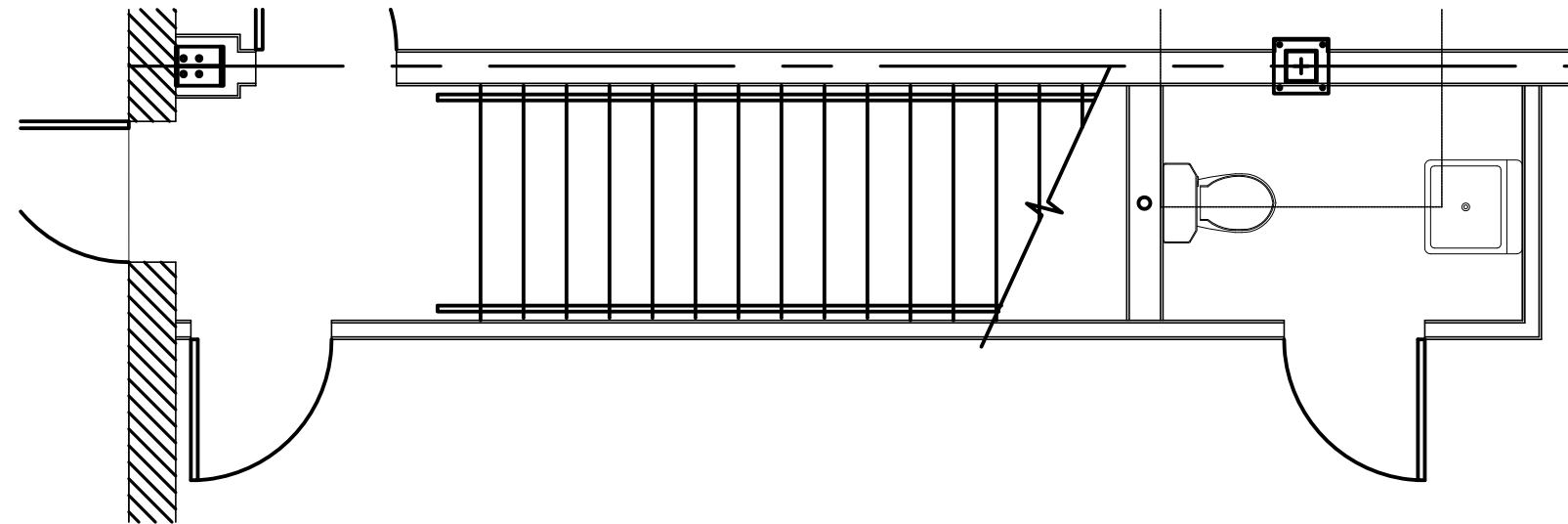
5 HANDRAIL DETAIL
SCALE: 1 1/2"=1'-0"



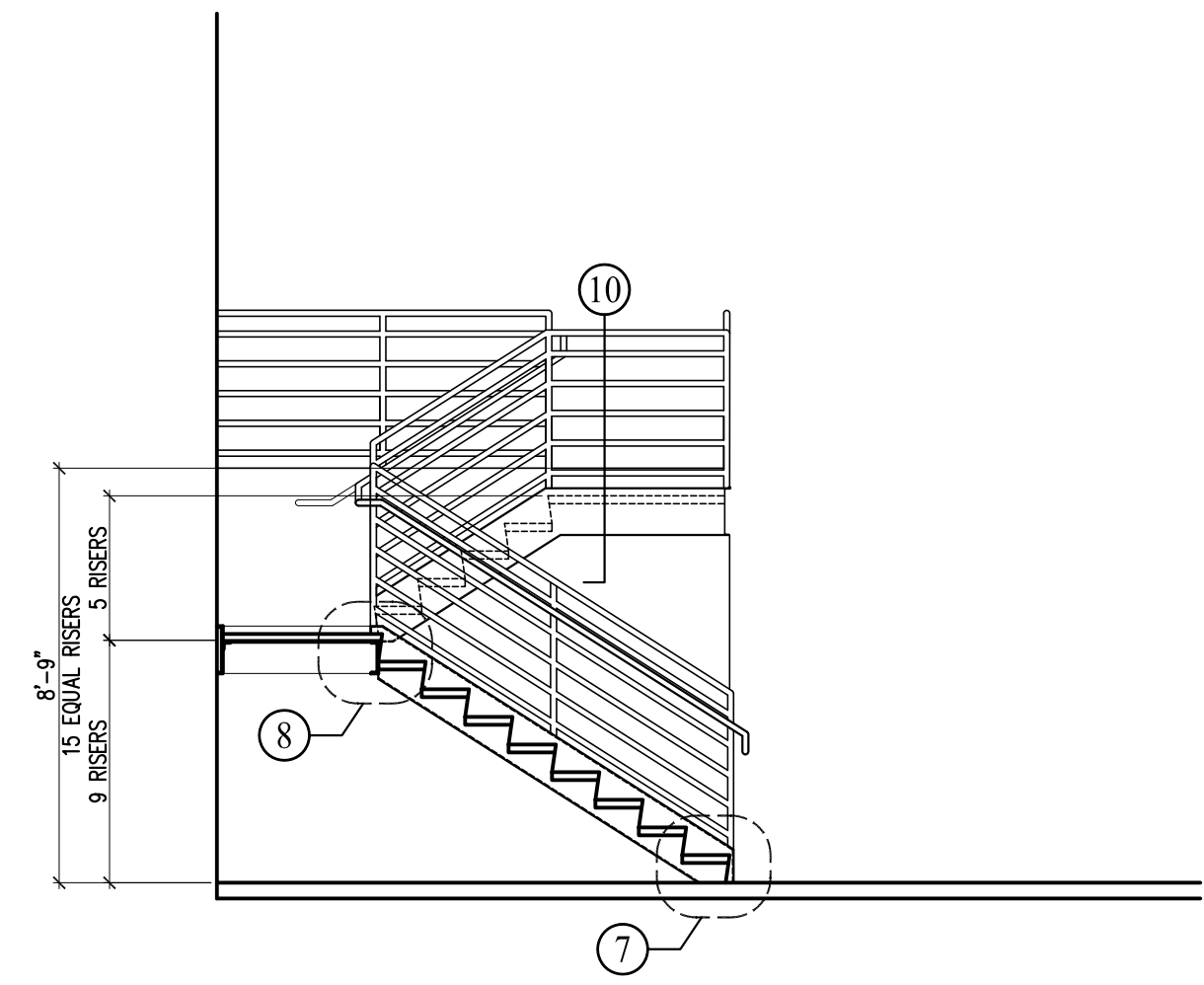
4 STAIR 1 SECTION (STAIR 2 SIMILAR)
SCALE: 1/4"=1'-0"



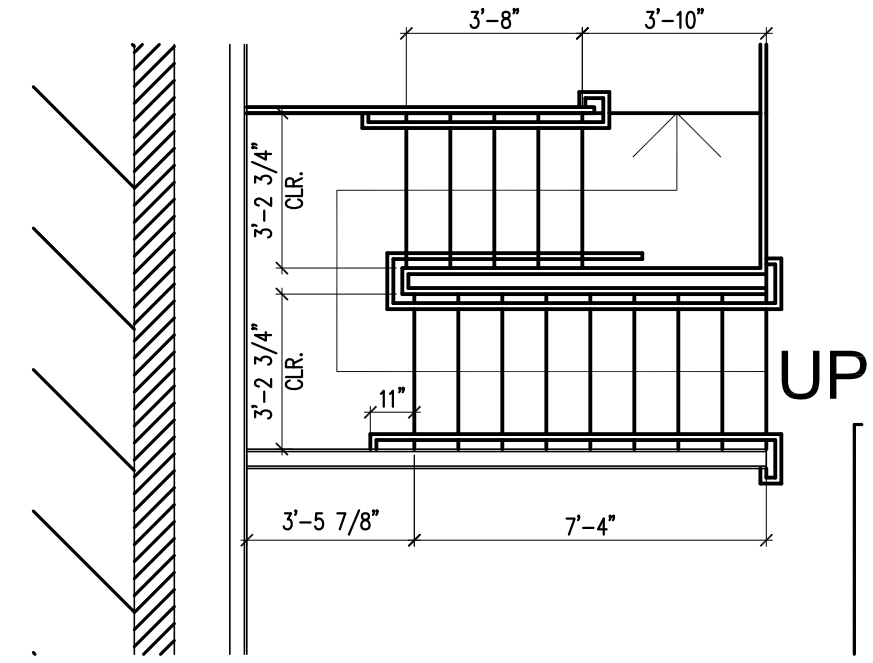
2A STAIR 1 PLAN-OVERALL (STAIR 2 SIMILAR)
SCALE: 1/4"=1'-0"



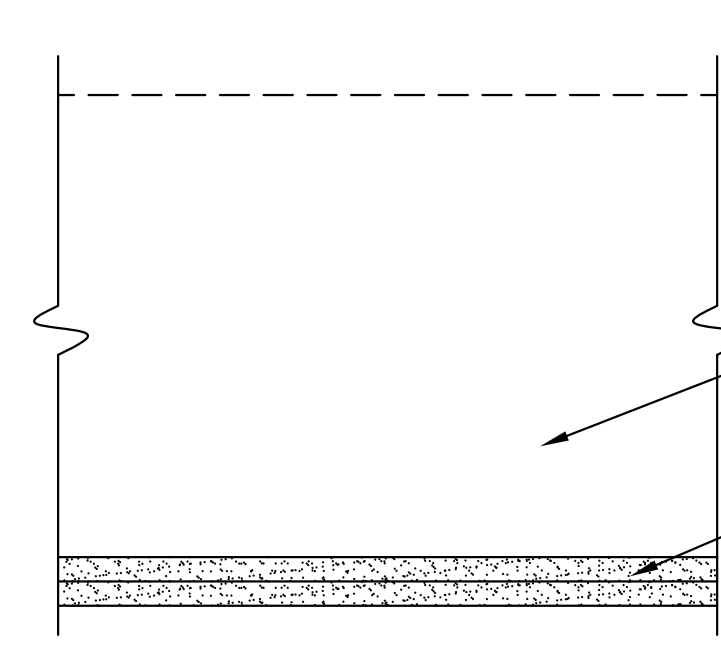
2 STAIR 1 PLAN-FIRST FLOOR (STAIR 2 SIMILAR)
SCALE: 1/4"=1'-0"



3 STAIR 3 SECTION
SCALE: 1/4"=1'-0"



1 STAIR 3 PLAN
SCALE: 1/4"=1'-0"



C1 CEILING ASSEMBLY 1 HOUR RATING

GA FILE NO. FC5406 APPENDED GA 610-02

- Gypsum Board** -- Base layer 5/8" type X gypsum board applied at right angles to framing with 1-1/4" Type W or S drywall screws 24" O.C. Face layer 5/8" type X gypsum wallboard or gypsum veneer base applied at right angles to framing with 1-7/8" Type W or S drywall screws 12" O.C. at joints and intermediate joists and 1-1/2" Type G drywall screws 12" O.C. placed 2" back either side of end joists. Edge joints offset 24" from base layer edge joints.
- Framing Members** -- Metal or wood framing structure

Ceiling provides one hour fire resistance protection for framing, including trusses.

C1 1 HOUR CEILING ASSEMBLY