

Prepared For:  
Canal Landing / New Yard LLC  
100 West Commercial St. Portland, ME

Consulting Engineer:

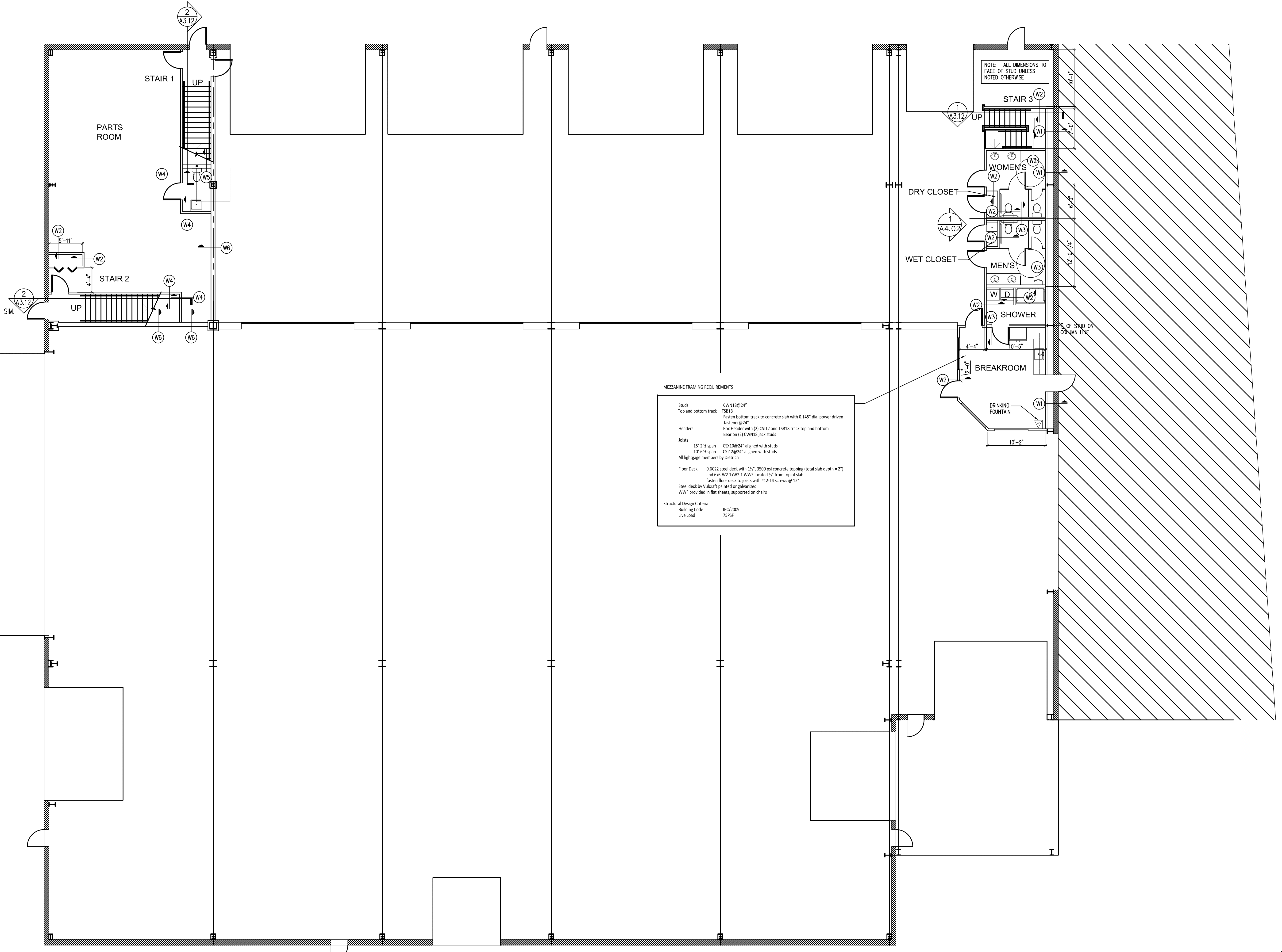
Architect:  
**ARCHETYPE** architects  
48 Union Wharf Portland, Maine 04101  
(207) 772-6022 Fax (207) 772-4056

Project:  
Canal Landing / New Yard  
100 West Commercial St. Portland, ME

Revisions:


Date: 25 September 2014  
Scale: 1/8" = 1'-0"  
**FIRST FLOOR PLAN**

**A1.01**



**MEZZANINE FRAMING REQUIREMENTS**

Studs CWN18@24"  
Top and bottom track TS818  
Fasten bottom track to concrete slab with 0.145" dia. power driven fastener@24"  
Headers Box Header with (2) CS112 and TS818 track top and bottom  
Bear on (2) CWN18 jack studs

Joints 15'-2" span CSK10@24" aligned with studs  
10'-6" span CS112@24" aligned with studs  
All lightgage members by Dietrich

Floor Deck 0.6C22 steel deck with 1 1/2" 3500 psi concrete topping (total slab depth = 2")  
and 6x6-W2.1xW2.1 WWF located 1/2" from top of slab  
Fasten floor deck to joists with #12-14 screws @ 12"  
Steel deck by Vulcraft painted or galvanized  
WWF provided in flat sheets, supported on chairs

Structural Design Criteria  
Building Code IRC/2009  
Live Load 75PSF

NOTE: ALL DIMENSIONS TO FACE OF STUD UNLESS NOTED OTHERWISE

**1** | FIRST FLOOR PLAN  
SCALE: 1/8"=1'-0"

