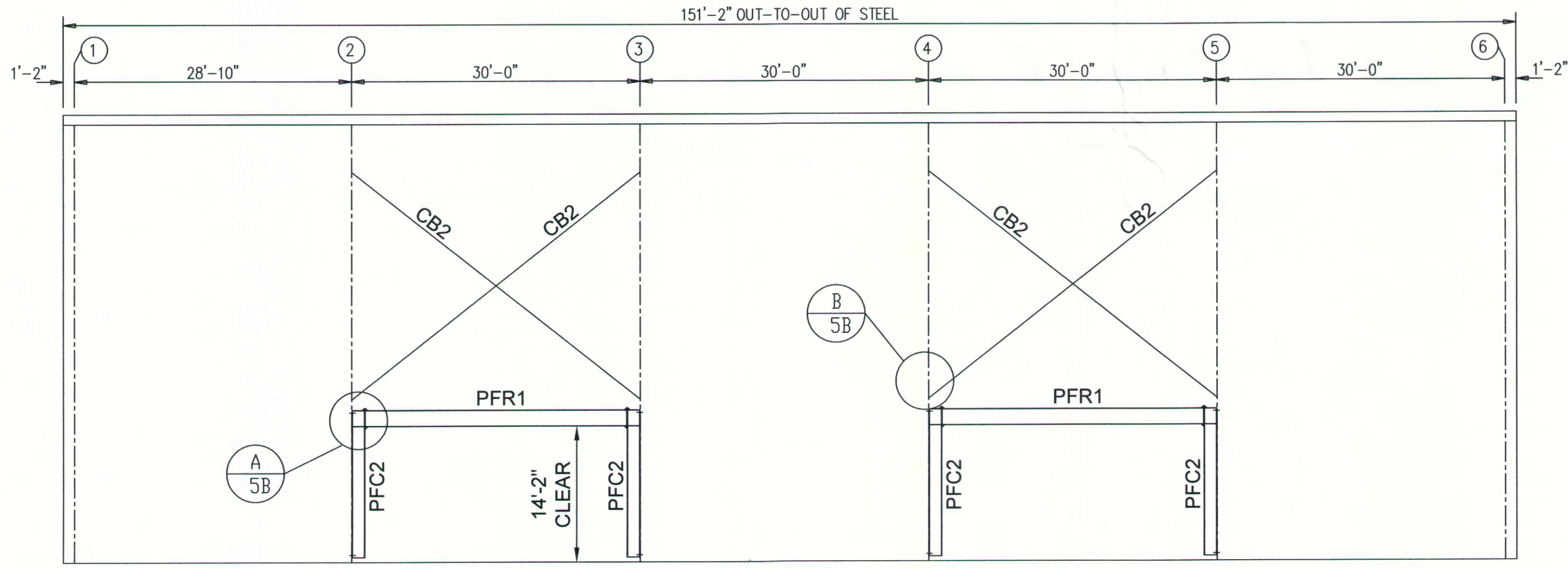


NOTE:
USE C-5 TO ATTACH
JAMB/GIRTS ABOVE PORTAL

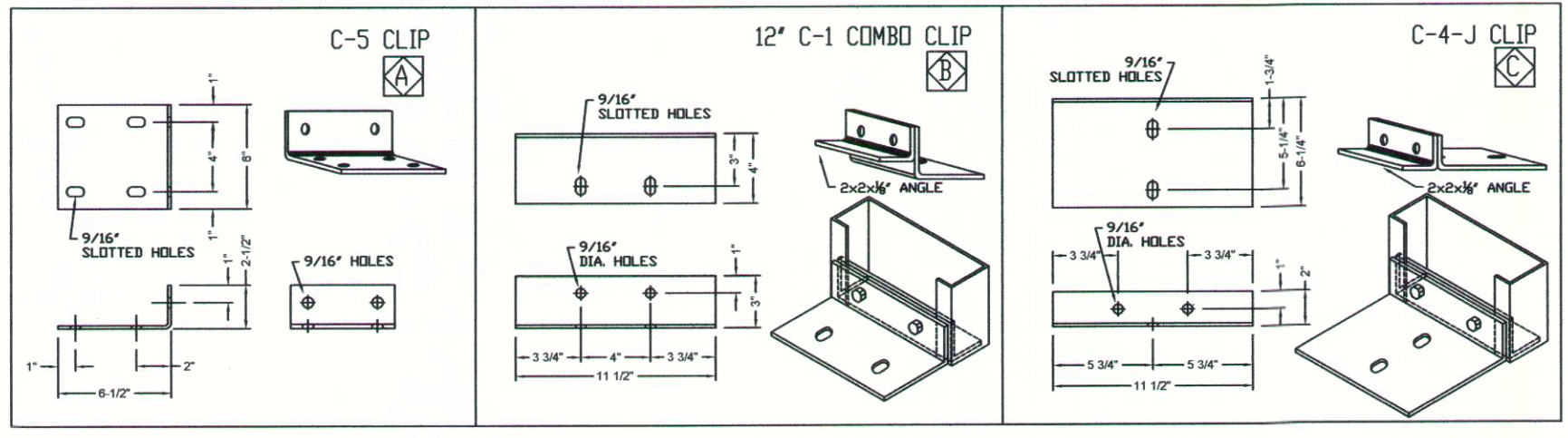
SIDEWALL FRAMING: FRAME LINE C



SIDEWALL FRAMING: FRAME LINE I

QTY	PART MARK	DESCRIP	LENGTH
4	PFC1	WEB: 15" X 3/16" FLG.: 8" X 1/2"	17' 6"
4	PFC2	WEB: 15" X 3/16" FLG.: 8" X 1/2"	15' 2"
4	PFR1	WEB: 19 1/4" X 3/16" FLG.: 10" X 3/8"	27' 3-1/2"

QTY	PART MARK	DESCRIP	LENGTH
4	CB1	1" ROD	37' 6"
4	CB2	1" ROD	38' 9"
8	G13	8Z25 14	27' 5-1/2"
14	G14	8Z25 14	28' 7-1/2"
6	G15	8Z25 14	19' 11-1/2"
12	G16	8Z25 14	3' 3-3/4"
24	G17	8Z25 14	4' 0"
6	G18	8Z25 14	7' 0"
6	G19	8Z25 14	1' 0"
7	G20	8Z25 14	1' 0"
4	J5	8C25 12	16' 3-3/4"
2	J6	8C25 12	37' 2-1/4"
2	J10	8C25 12	11' 0-1/2"
4	H1	8C25 12	19' 11-1/2"
2	SH1	8C25 12	9' 11-1/2"



SECTION B-5B

ERECTION REQUIRES MINOR ADJUSTMENTS

ESSEX STRUCTURAL STEEL CO., INC. CORTLAND, NEW YORK 13045			
REVISIONS	PROJECT:	CANAL LANDING 100 WEST COMMERCIAL STREET PORTLAND, MAINE 04101	
	CONTRACTOR:	IRISHSPAN INDUSTRIES	
	PROJECT NO.:	S-1468	
	TITLE:	LINE C, I FRAMING PLAN	SHEET:
	DRAWN BY:	JCK	SCALE: D.N.S.
	DATE:	7/1/14	