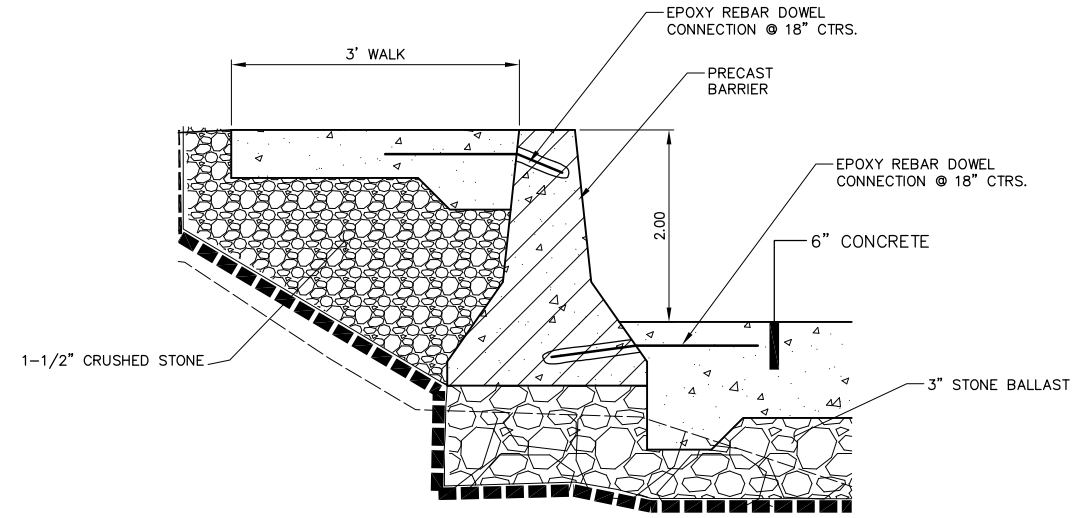
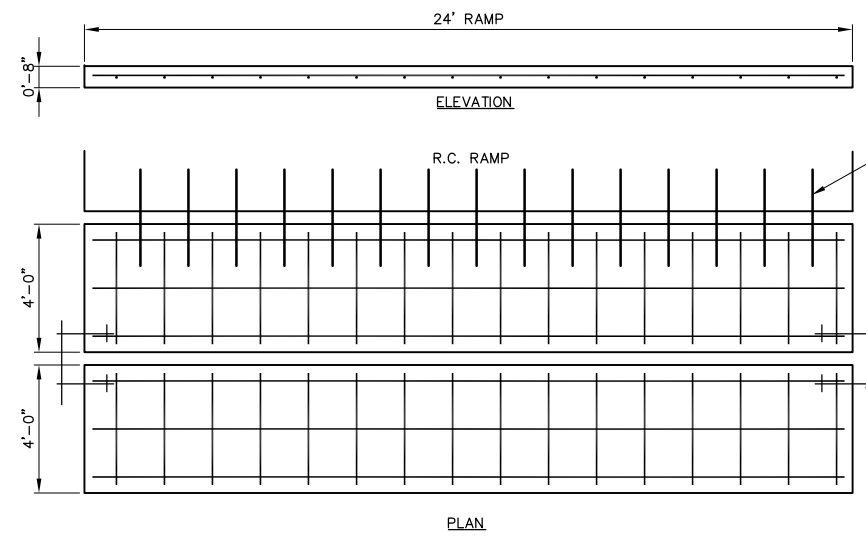
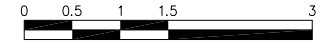


\\ds413\projects\11-46 sprague boatyard\cad\11-46 new yard llc civil.dwg

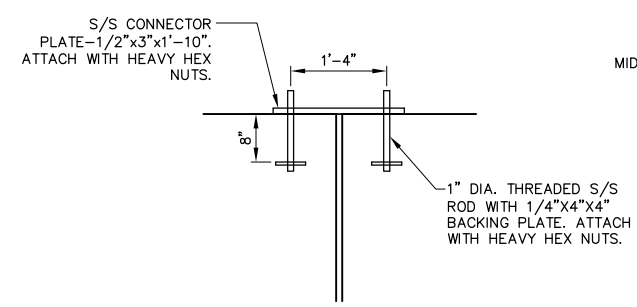


JERSEY BARRIER CONNECTION

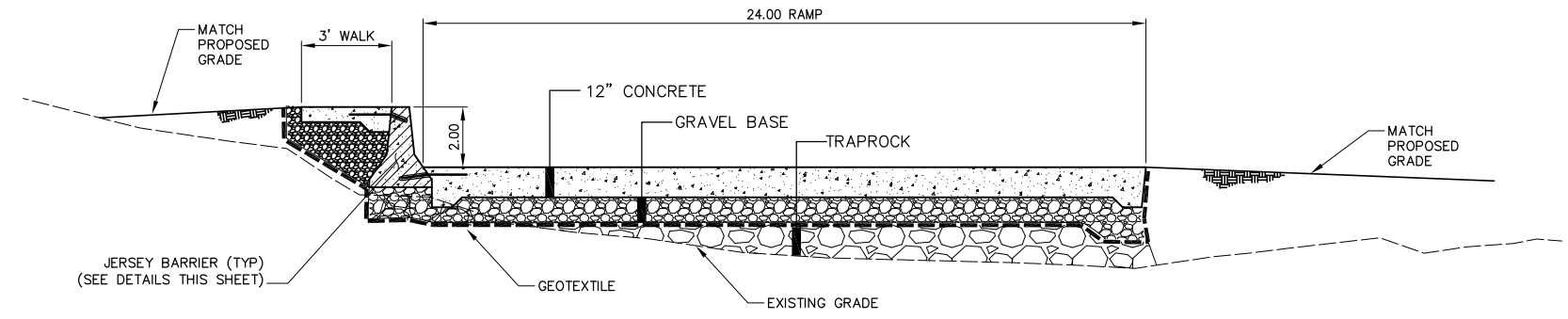


- PRECAST NOTES:**
- 3" MIN. COVER TO REINFORCED STEEL
 - 4000 PSI CONCRETE; W/C RATIO < 0,4; AIR 6%
 - NO.4 BARS AT 18" CTRS. EACH WAY. TOP AND BOTTOM.

PRECAST PLANKS

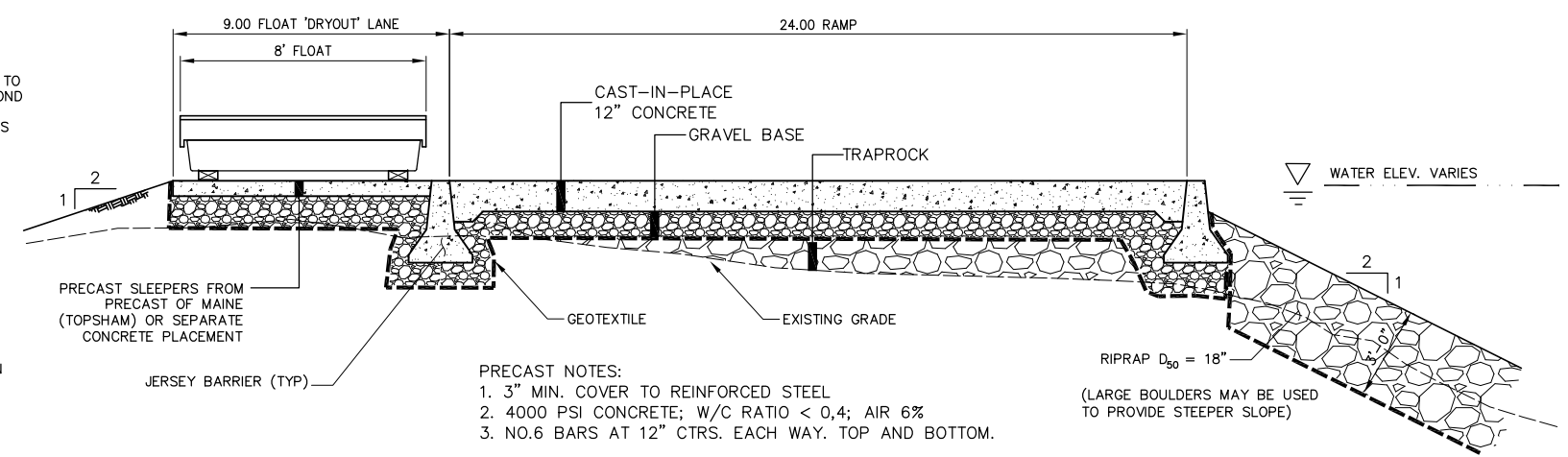
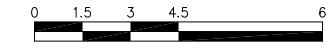


PLANK CONNECTION DETAIL



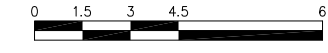
TYPICAL RAMP WITH WALKWAY SECTION

(STA. 1+37 TO 1+75)
(WALKWAY TRANSITION TO YARD PRIOR TO 1+75)



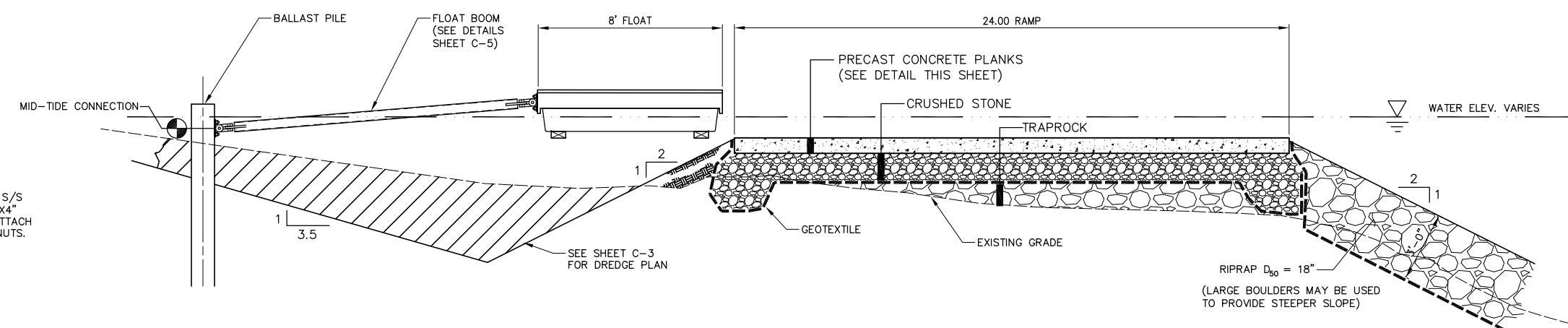
TYPICAL RAMP FLOAT EXTENSION SECTION

(STA. 0+50 TO 1+37)



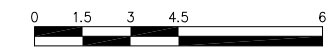
- PRECAST NOTES:**
- 3" MIN. COVER TO REINFORCED STEEL
 - 4000 PSI CONCRETE; W/C RATIO < 0,4; AIR 6%
 - NO.6 BARS AT 12" CTRS. EACH WAY. TOP AND BOTTOM.

RIPRAP $D_{50} = 18"$
(LARGE BOULDERS MAY BE USED TO PROVIDE STEEPER SLOPE)

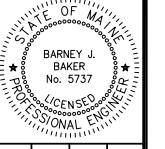


TYPICAL RAMP PRECAST SECTION

(STA. 0+00 TO 0+50)



NO.	DATE	INT.	BUB
9-11-13			BUB
9-16-13			BUB
9-26-13			BUB
SUBMISSION			
CLIENT REVIEW			
CLIENT REVIEW			
CONSTRUCTION (7' SHIFT NW)			



DESIGNED BY:	BUB
DRAWN BY:	JJC
CHECKED BY:	BUB
SCALE:	AS SHOWN

TYPICAL SECTIONS & DETAILS
NEW YARD LLC
CANAL LANDING
PORTLAND, MAINE

SHEET TITLE:	TYPICAL SECTIONS & DETAILS
DATE:	AUG 2013
CONTRACT NO.:	11-46
SHEET NO.:	C-4
REV.:	C