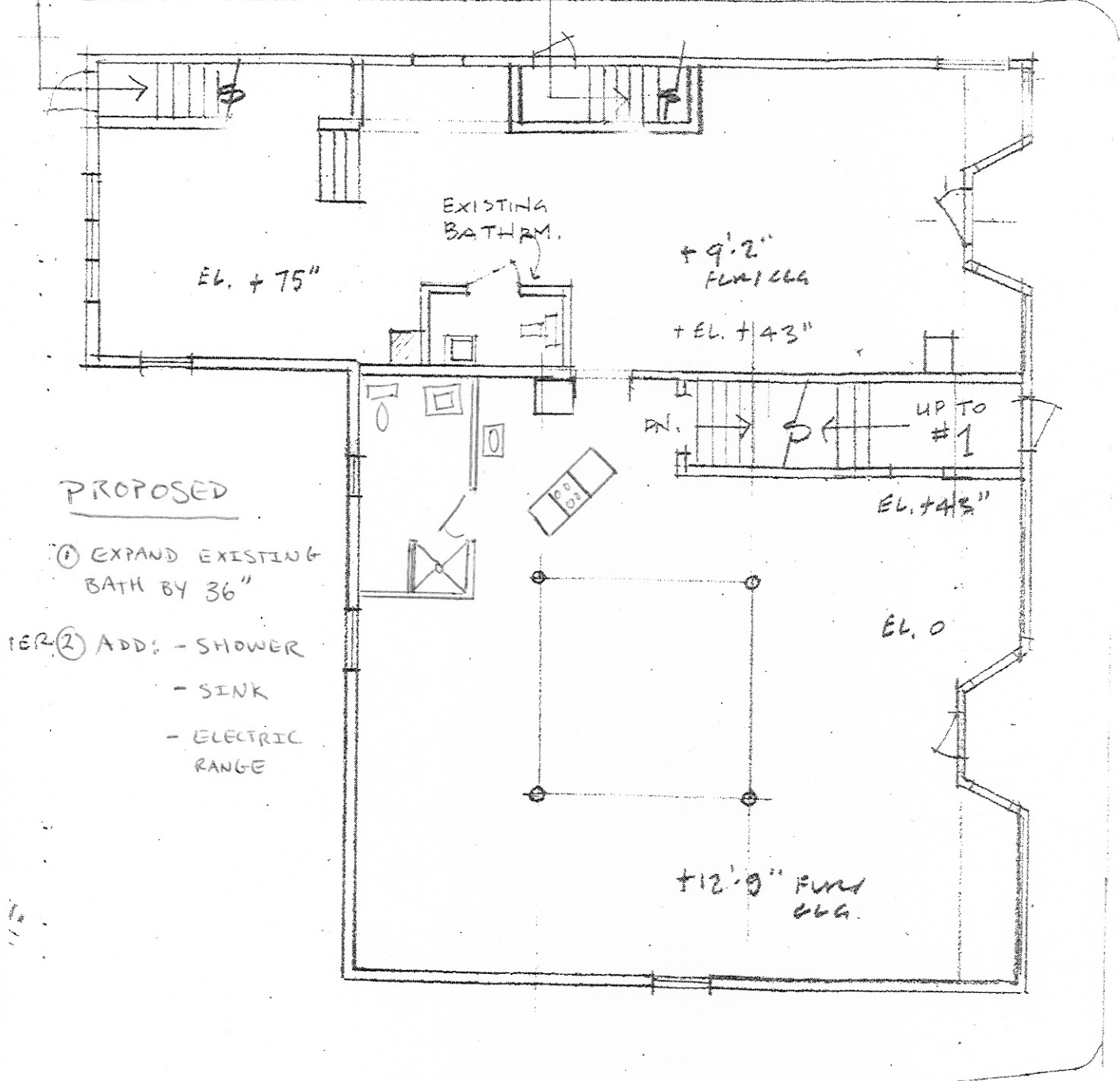


SUMMER ST.

UP TO #2

UP TO #3



PROPOSED

- ① EXPAND EXISTING BATH BY 36"
- ② ADD: - SHOWER
- SINK
- ELECTRIC RANGE

GROUND FLOOR

YORK ST.

26 BRACKETT ST.

FLOOR PLANS 1/8" = 1'-0"  
 for ASHLEY SALSBURY  
 4/11

WHIPPLE CALLENDER ARCHITECTS