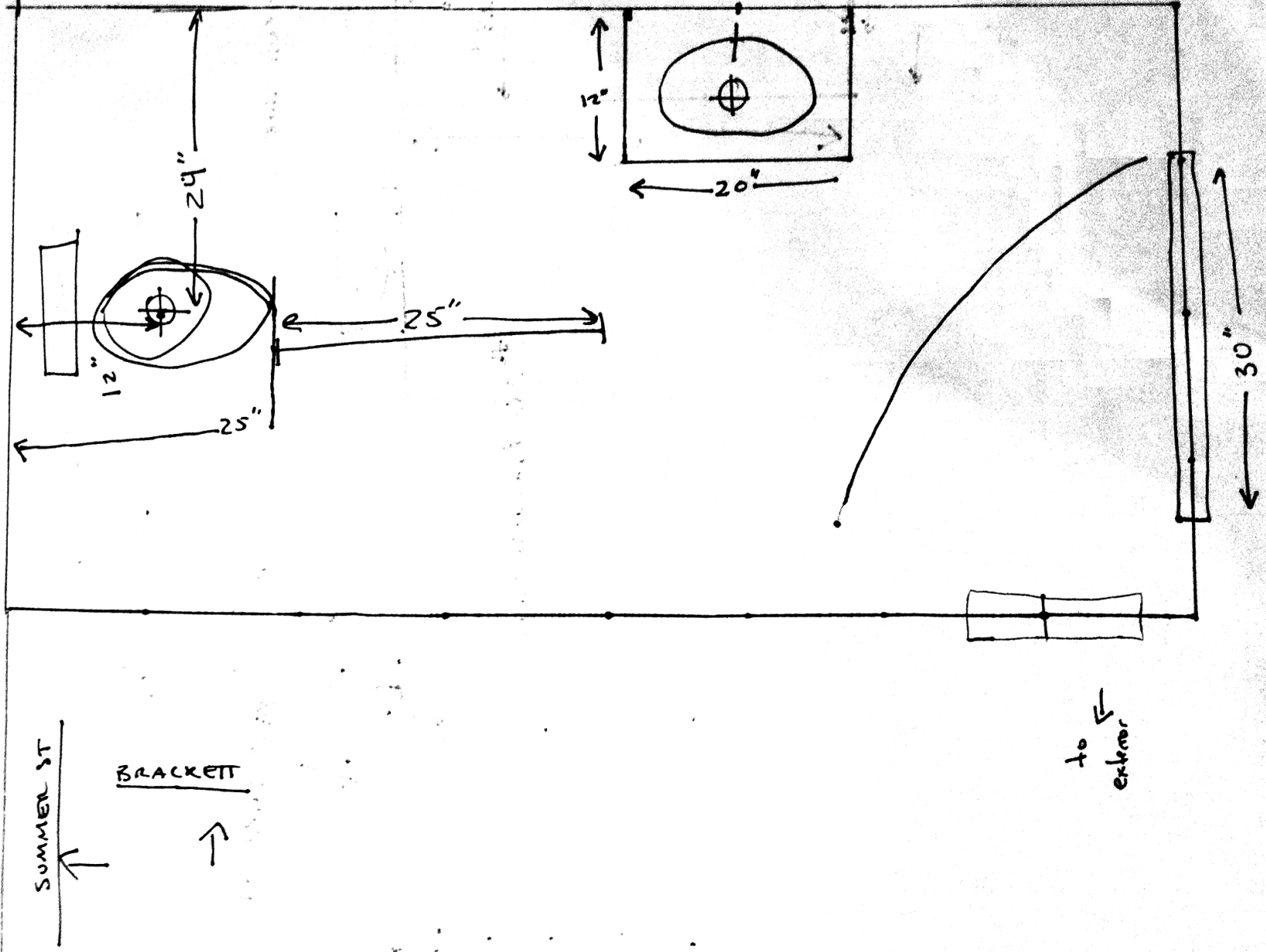


26 BRACKET STREET

COMMERCIAL SEPARATION: BATHROOM

DESIGN, AMENDED

12/9/2011



SUMMER ST.

P TO #2

UP TO #3

EL. +75"

EXISTING BATHRM.

+9'-2" FLOOR CLG

+EL. +43"

UP TO #1

EL. +43"

EL. 0

+12'-9" FLOOR CLG

- ① Install new 4x8 bath w/sink + toilet. 8 foot ceiling 2x4 construction 1/2" drywall R

- ② Remove stairs, close off pass through with 2x4 with 5/8 type x on ~~either~~ both sides.

GROUND FLOOR

YORK ST

26 BRACKETT ST.

FLOOR PLANS 1/8" = 1'-0"
for ASHLEY SALSBURY
4/11