

**WINDOW SCHEDULE**

WIN #	SIZE	STYLE	TYPE
1.1	1818	FIXED	FIBERGLASS FRAME
1.2	4248	FIXED	FIBERGLASS FRAME
1.3	3648	CASEMENT	FIBERGLASS FRAME EGRESS
2.1	3624	AWNING	FIBERGLASS FRAME/ OP'G RESTRICTOR PER ASTM F2090-10
2.2	3648	FIXED	FIBERGLASS FRAME
2.3	3038	FIXED	FIBERGLASS FRAME
2.4	3238	AWNING	FIBERGLASS FRAME
2.5	5434	PICTURE	FIBERGLASS FRAME
2.6	1834	AWNING	FIBERGLASS FRAME
2.7	1834	AWNING	FIBERGLASS FRAME
2.8	3648	FIXED	FIBERGLASS FRAME TEMPERED
2.9	2048	CASEMENT	FIBERGLASS FRAME TEMPERED
2.10	2072	CASEMENT	FIBERGLASS FRAME OP'G RESTRICTOR PER ASTM F2090-10
2.11	2072	CASEMENT	FIBERGLASS FRAME OP'G RESTRICTOR PER ASTM F2090-10
2.12	7872	PICTURE	FIBERGLASS FRAME
2.13	3272	CASEMENT	FIBERGLASS FRAME OP'G RESTRICTOR PER ASTM F2090-10
3.1	3620	AWNING	FIBERGLASS FRAME
3.2	3640	PICTURE	FIBERGLASS FRAME
3.3	2460	FIXED	FIBERGLASS FRAME
3.4	3260	CASEMENT	FIBERGLASS FRAME
3.5	4660	FIXED	FIBERGLASS FRAME
3.6	3430	AWNING	FIBERGLASS FRAME
3.7	3630	PICTURE	FIBERGLASS, TEMPERED, OBSCURED
3.8	3648	CASEMENT	FIBERGLASS, EGRESS
3.9	4236	PICTURE	FIBERGLASS FRAME
3.10	3636	CASEMENT	FIBERGLASS FRAME
3.11	3660	PICTURE	FIBERGLASS, TEMPERED
3.12	2460	CASEMENT	FIBERGLASS, TEMPERED
3.13	2060	CASEMENT	FIBERGLASS, TEMPERED
3.14	2060	CASEMENT	FIBERGLASS, TEMPERED
3.15	7860	PICTURE	FIBERGLASS, TEMPERED
3.16	3260	CASEMENT	FIBERGLASS, OBSCURED
ROOF	2549	SKYLIGHT	VELUX CVA

**TYPICAL WINDOW NOTES:**  
 FIBERGLASS FRAME INTERIOR AND EXTERIOR  
 BRICK MOLD  
 1/2" DRYWALL RETURNS  
 INTERIOR COLOR: WHITE  
 EXTERIOR COLOR: DARK BRONZE  
 STANDARD JAMB  
 STANDARD WHITE HARDWARE  
 TRIPLE PANE GLAZING, LOW-E



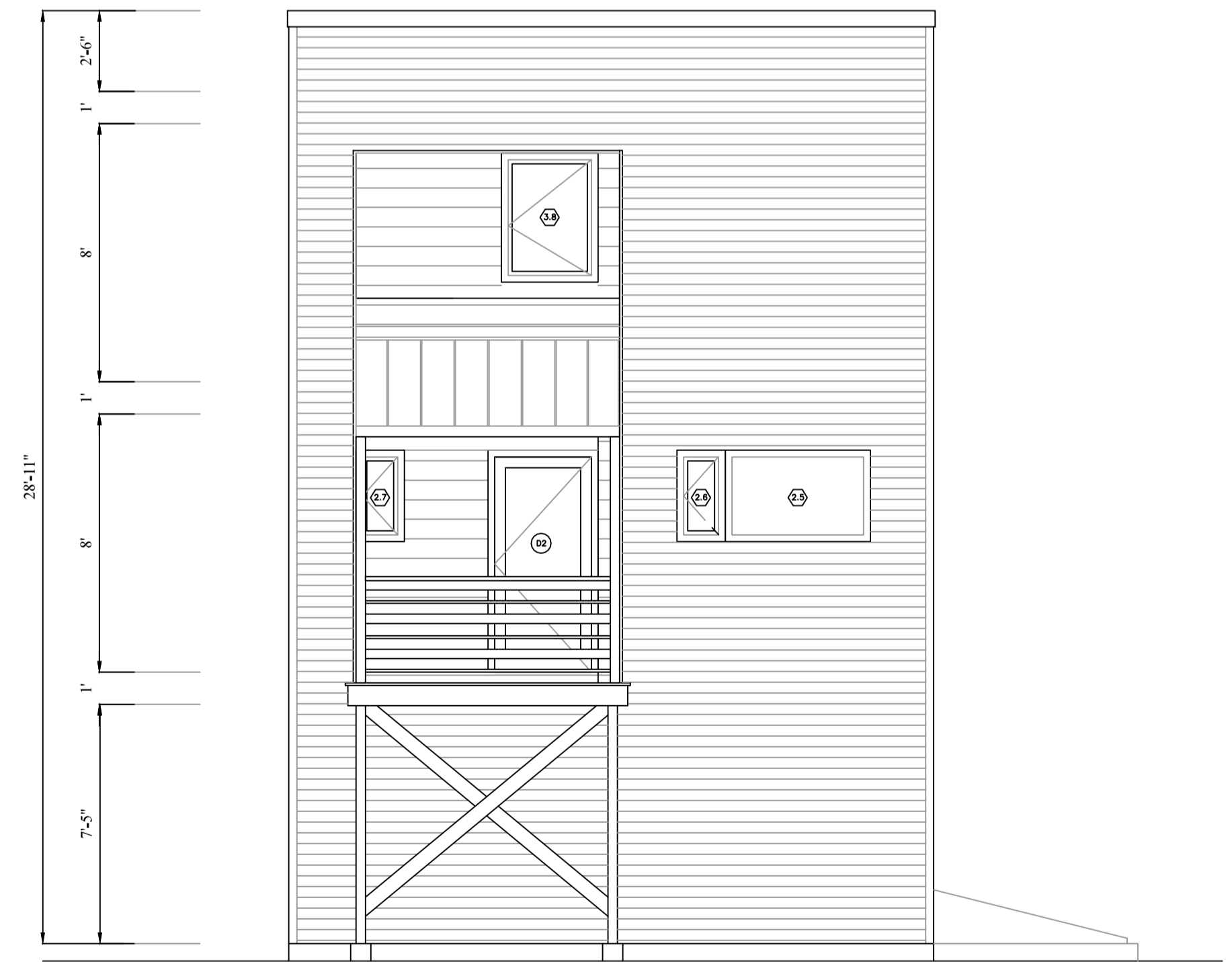
2 RIGHT (NORTHEAST) ELEVATION  
SCALE: 1/4"=1'-0"



1 FRONT (SOUTHEAST) ELEVATION  
SCALE: 1/4"=1'-0"



4 LEFT (SOUTHWEST) ELEVATION  
SCALE: 1/4"=1'-0"



3 BACK (NORTHWEST) ELEVATION  
SCALE: 1/4"=1'-0"

**McCain/Walworth House, 45 Summer Street, Portland, Maine 04102**

EXTERIOR ELEVATIONS SCALE: 1/4"=1'-0" MAY 24, 2013

ELIZABETH NEWMAN ARCHITECT

32 Sawyer Street, Portland 04103 207.899.1845 newman.liz@gmail.com