

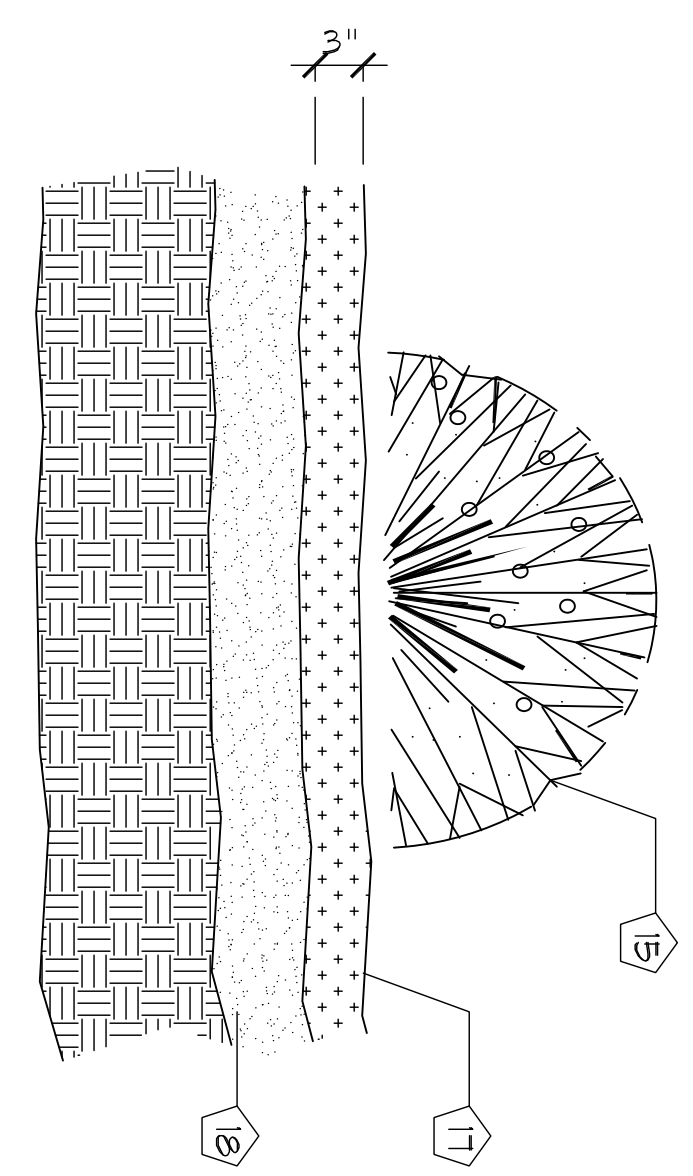
CITY OF PORTLAND

- LEGEND:
- PROPERTY LINE ————
  - SETBACK LINE - - - - -
  - CONTOUR LINE - - - - - 1/1"
  - FROST ELEVATION 1/1"
  - BIT. PAVEMENT
  - PLANTINGS

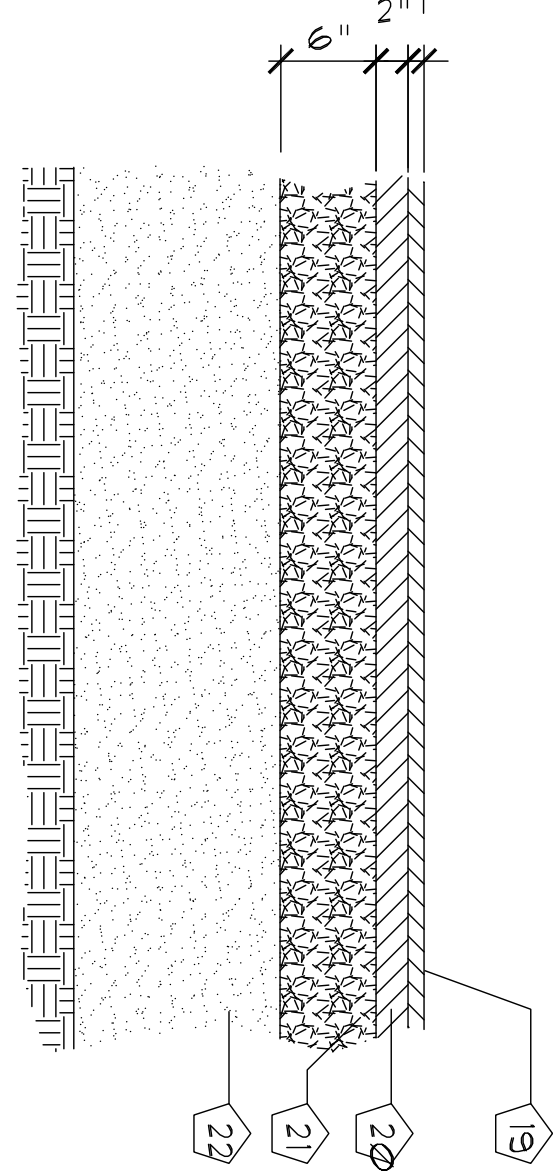
PAVING NOTE:  
1. 2% MAXIMUM SLOPE AT PARKING AREA.

KEYED NOTES:

- 1) PARKING SPACE #1
- 2) PARKING SPACE #2
- 3) HC LOADING AISLE
- 4) EXISTING DOMESTIC WATER LINE, V/F.
- 5) EXISTING SEWER LINE, V/F.
- 6) EXISTING GAS LINE, V/F.
- 7) EXISTING OVERHEAD ELEC / PHONE LINES
- 8) VERTICAL WHEELCHAIR LIFT.
- 9) SETBACK LINE: FRONT & SIDE - 10', REAR - 20'.
- 10) PAVED PARKING AREA - SEE DETAIL B.
- 11) PAVED AREA FOR REFUSE BINS.
- 12) POLE MOUNTED HC PARKING SIGN - SEE DRAWING F/G-1.
- 13) SPRINKLER LINE
- 14) PLANTING BED - SEE DETAIL A.
- 15) HOSTA (TYP. OF 15)
- 16) BITUMINOUS PAVEMENT - PER DETAIL E.
- 17) MULCH
- 18) EXISTING ORGANIC MATERIAL.
- 19) BITUMINOUS CONCRETE - FINISH COURSE.
- 20) BITUMINOUS CONCRETE - BINDER COURSE.
- 21) AGGREGATE BASE.
- 22) EXISTING AGGREGATE SUB-BASE.
- 23 - 27) NOT USED.
- 28) EXISTING BRICK SIDEWALK.
- 29) 5'-0" FROST PROTECTED LEVEL LANDING AT ENTRY DOORS - SEE DETAIL D, DRAWING F/G-1.
- 30) RIB RIGID INSULATION.
- 31) NOT USED.
- 32) REMOVE EXISTING PAVEMENT & PLANTERS TO A DEPTH NEEDED TO INSTALL BIT. PAVEMENT PER DETAIL E. CONTINUE PAVEMENT UNDER FRONT PORCH.
- 33) REMOVE EXISTING GRAVEL TO THE DEPTH NEEDED TO INSTALL BIT. PAVEMENT PER DETAIL B.

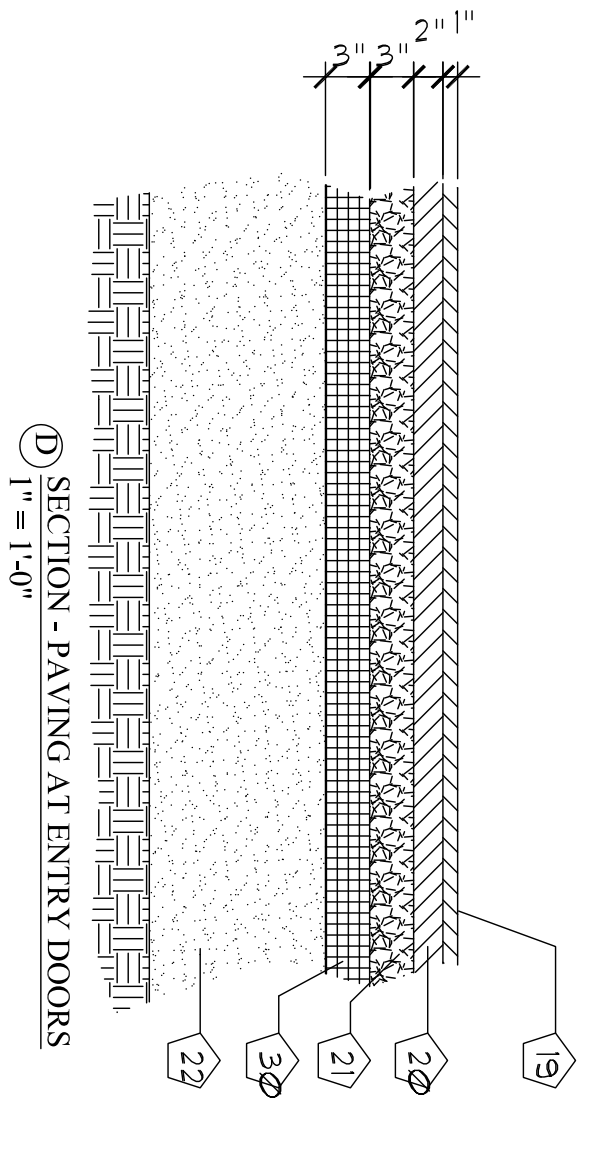


A) DETAIL  
1" = 1'-0"

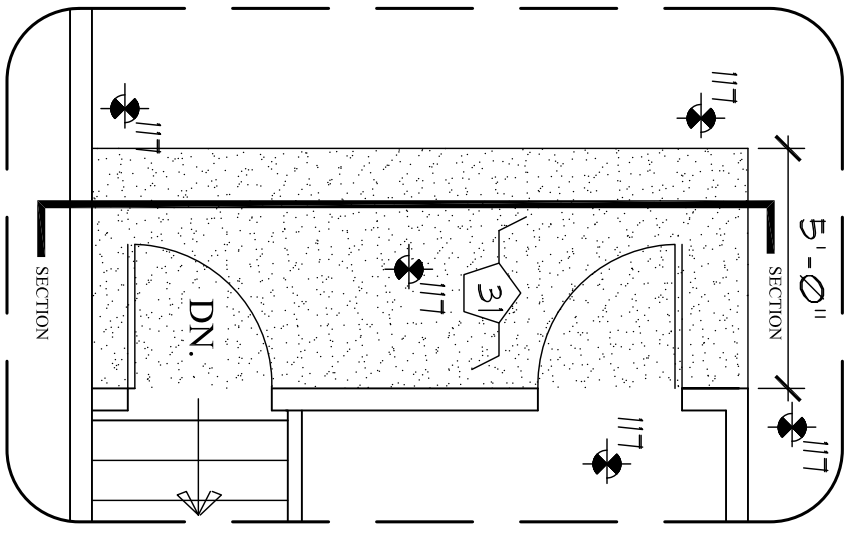
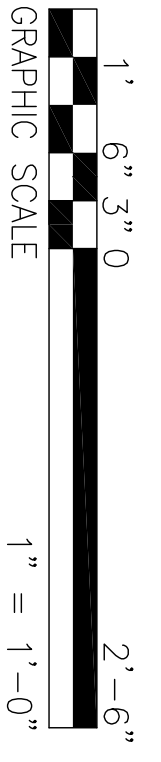


B) DETAIL  
1" = 1'-0"

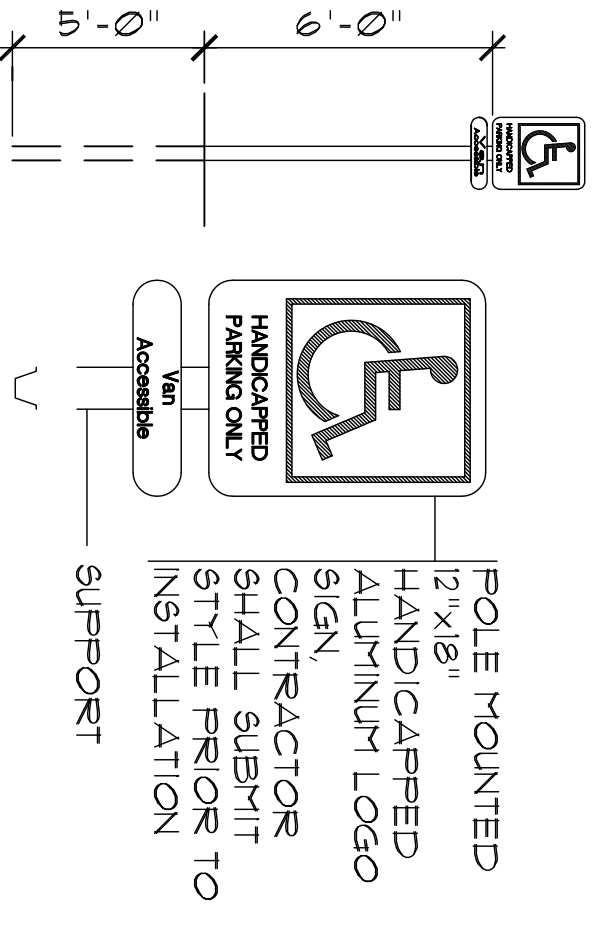
DETAIL C - NOT USED  
C) DETAIL  
1" = 1'-0"



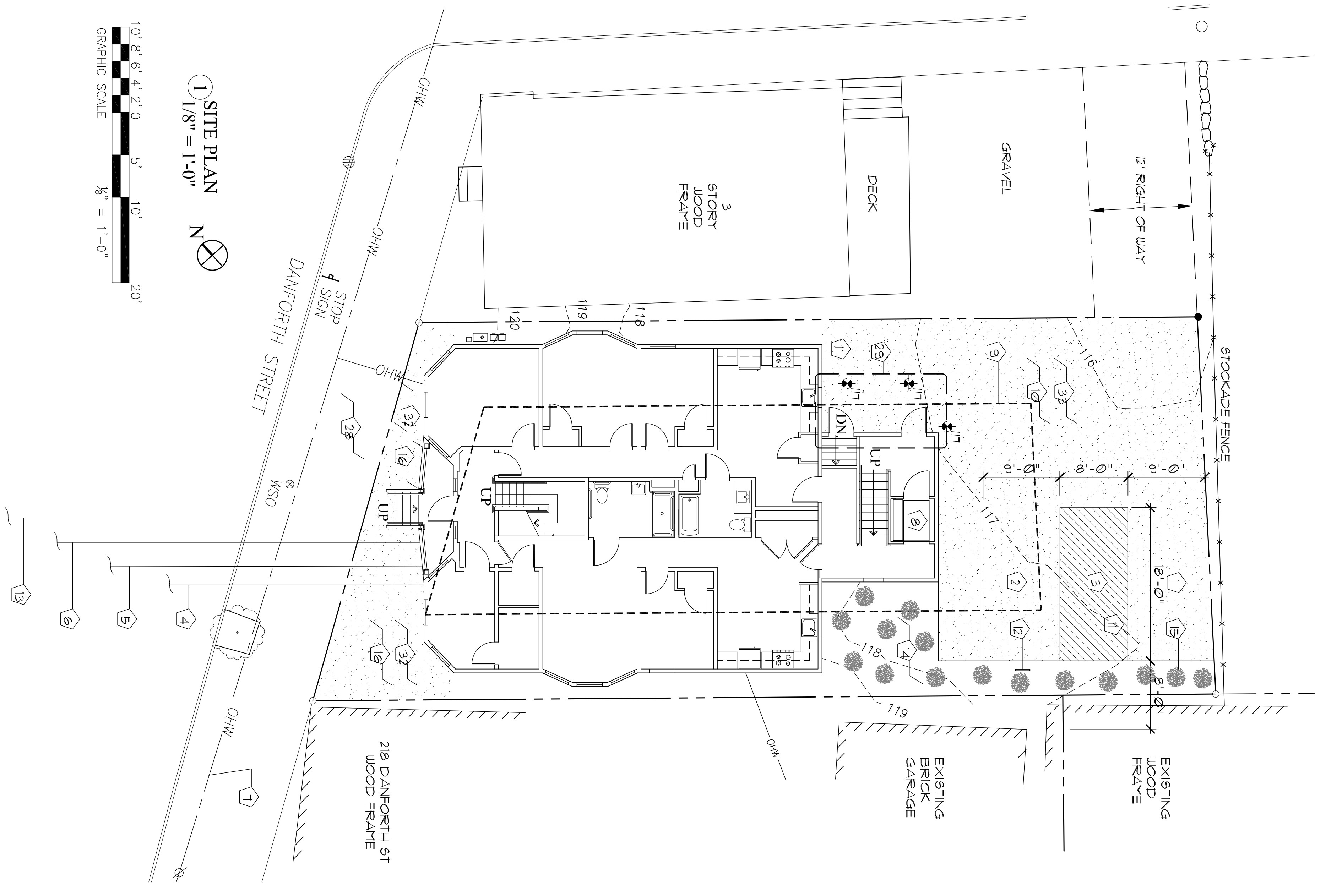
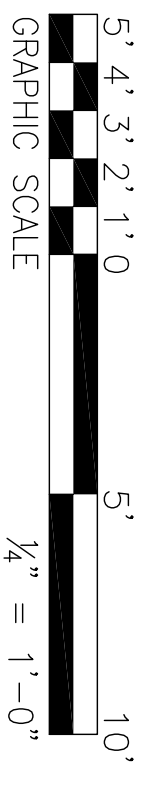
D) SECTION - PAVING AT ENTRY DOORS  
1" = 1'-0"



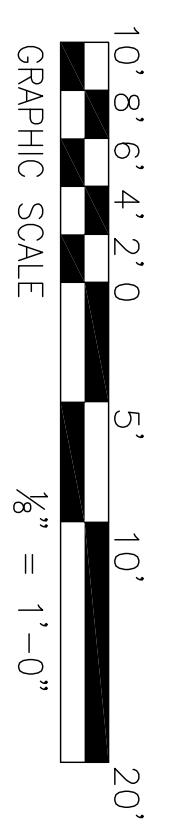
E) PLAN - PAVING AT ENTRY DOORS  
1/4" = 1'-0"



F) POLE MOUNTED HC LOGO SIGN  
1/4" = 1'-0"



G) SITE PLAN  
1/8" = 1'-0"



S-1	Drawing <b>SITE PLAN</b>	Date 7/11/14	Scale As Noted	Architect <b>SHIELDS ARCHITECTURE</b> CUMBERLAND, MAINE (207) 776-8926	
	Project: <b>ADDITION &amp; RENOVATIONS</b> 214 DANFORTH STREET PORTLAND, MAINE				