

CITY OF PORTLAND

- GENERAL DEMOLITION NOTES:**
1. DEMOLITION IS NOT LIMITED TO WORK SHOWN ON THIS SHEET. THE CONTRACTOR IS RESPONSIBLE FOR ANY AND ALL DEMOLITION OR REMOVAL REQUIRED TO IMPLEMENT WORK.
  2. MECHANICAL & ELECTRICAL SUBCONTRACTORS TO CUT & TERMINATE UTILITIES IN CONFORMANCE W/CODE.
  3. G.C. TO DEMO & DISPOSE OF ALL TERMINATED ELECTRICAL & MECHANICAL DEVICES & EQUIPMENT.

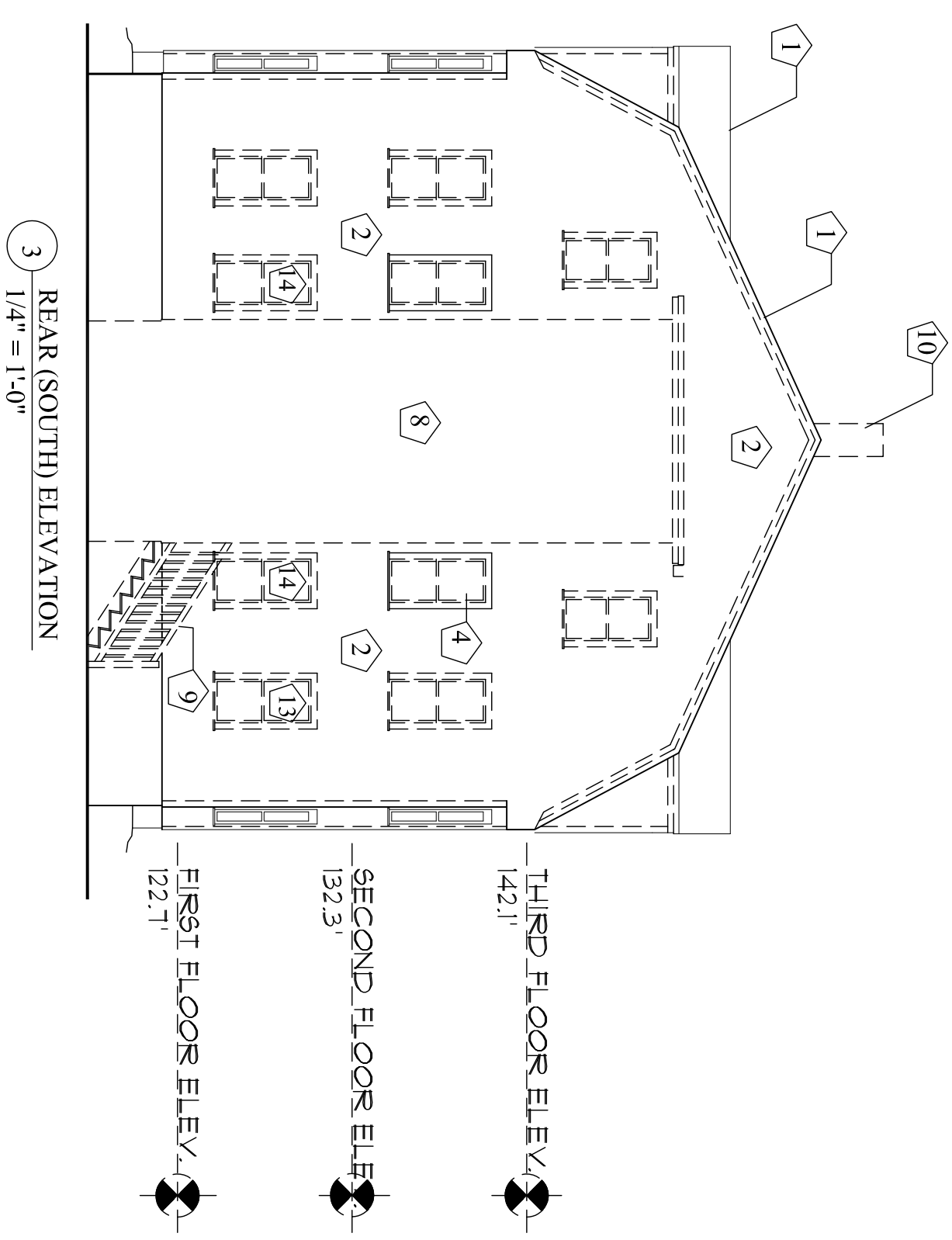
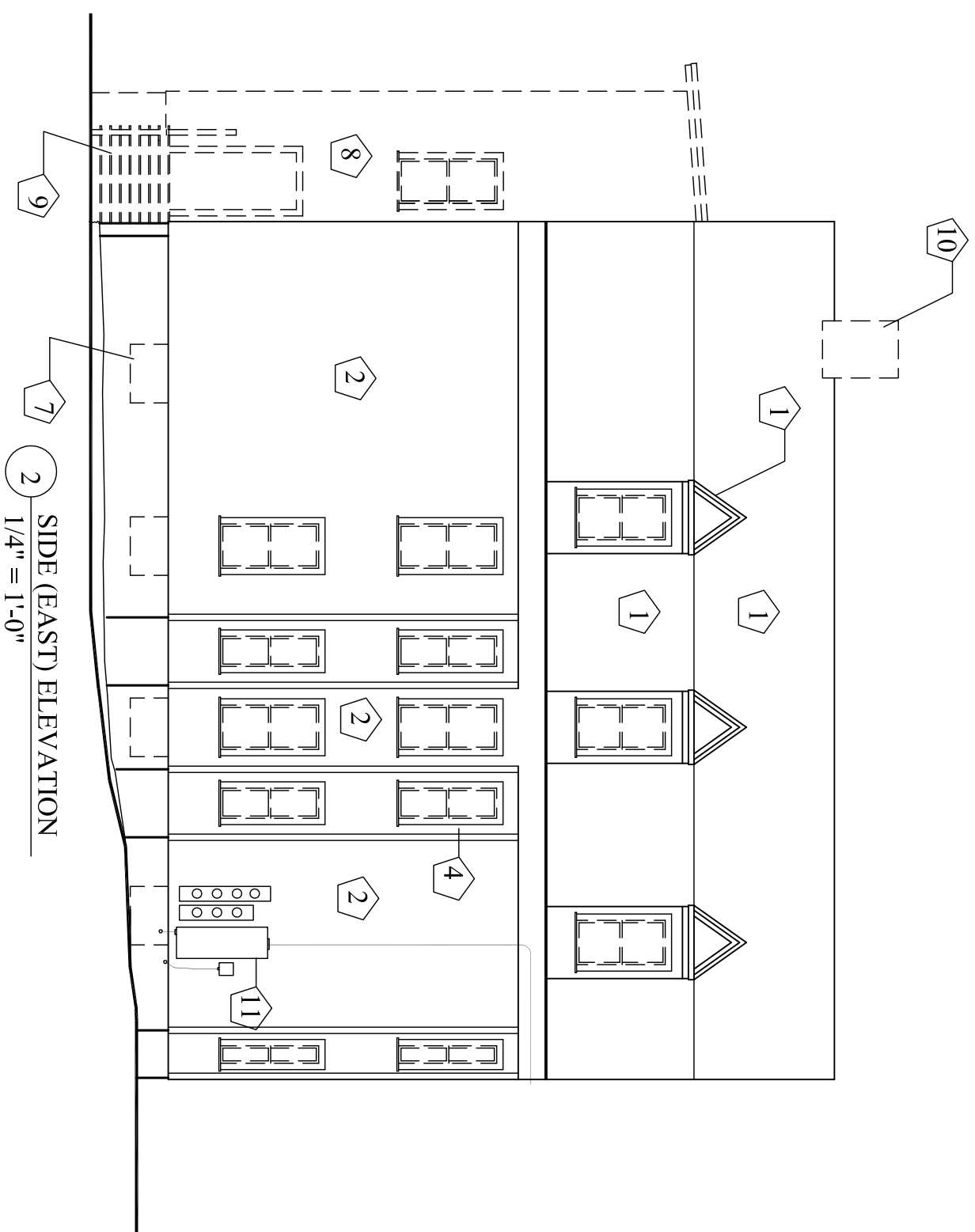
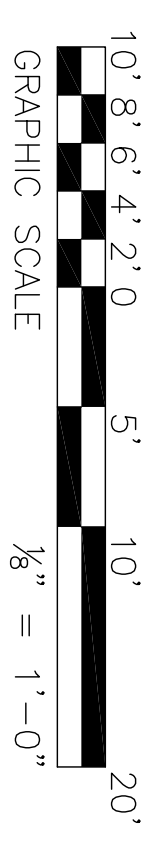
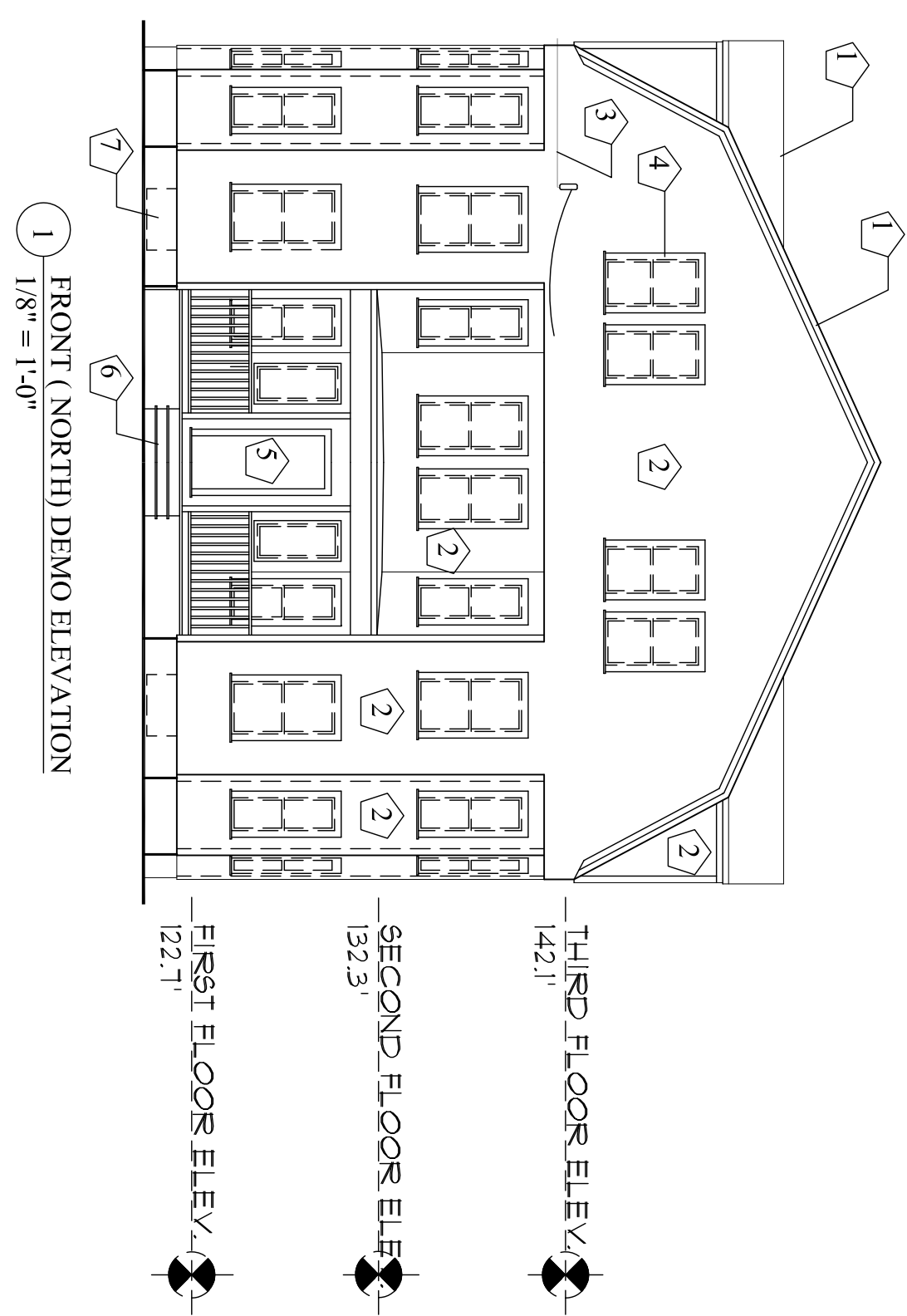
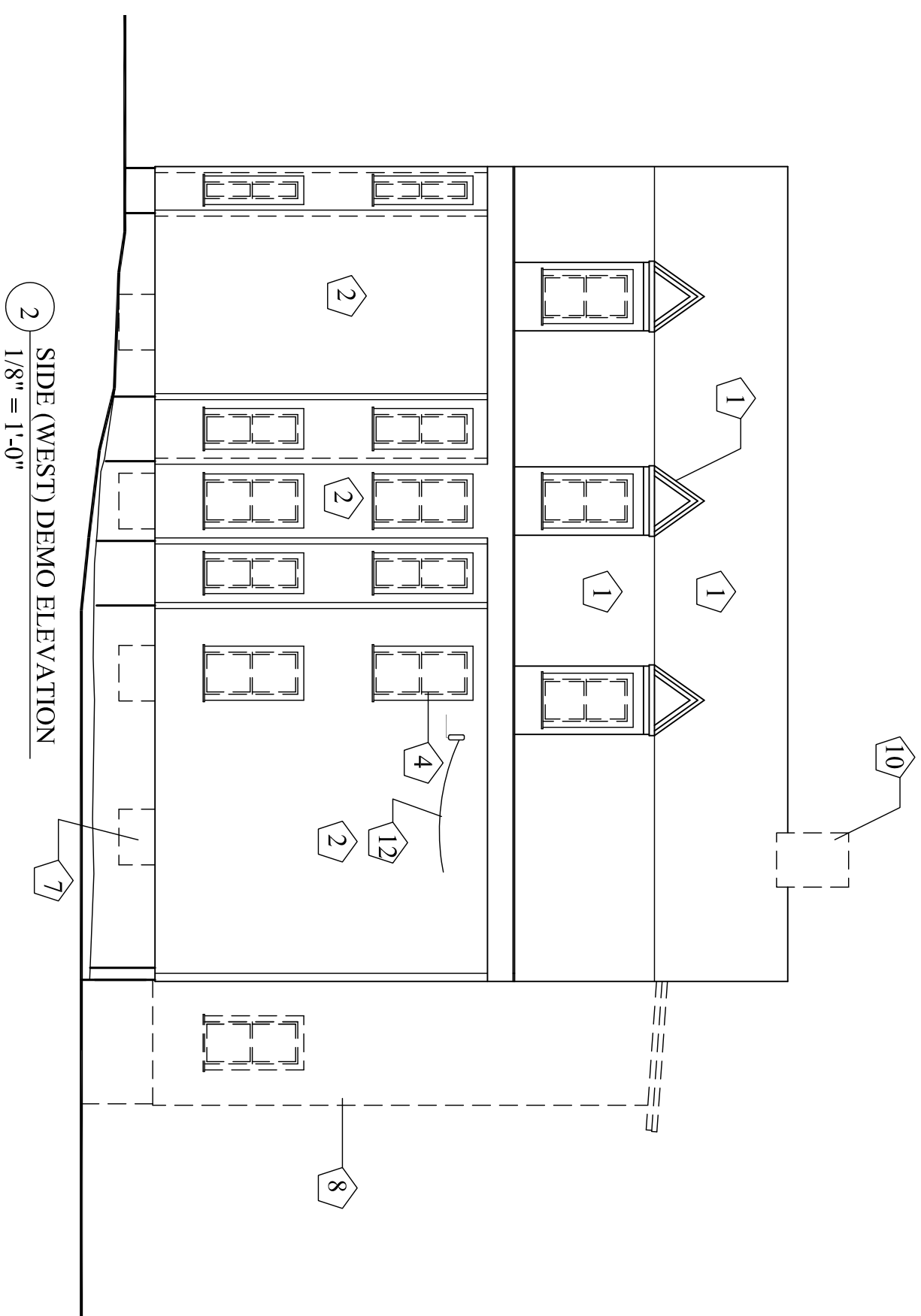
**LEGEND**

WALL / ITEM TO BE REMOVED - - - - -

EXISTING WALL / ITEM TO REMAIN - - - - -

**KEYED NOTES**

- 1 ASPHALT SHINGLES - TO REMAIN.
- 2 SIDING - TO REMAIN.
- 3 ELECTRICAL, TELEPHONE, CABLE WIRES - TO REMAIN.
- 4 WINDOW - REMOVE WINDOW. INTERIOR & EXTERIOR TRIM TO REMAIN. PREP FOR INSTALLATION OF VINYL REPLACEMENT WINDOWS. (TYP). SEE KEYED NOTES 13 & 14.
- 5 DOOR - TO REMAIN.
- 6 PORCH - TO REMAIN.
- 7 BASEMENT WINDOW - REMOVE WINDOW, INTERIOR & EXTERIOR TRIM DOWN TO MASONRY OPENING (TYP.)
- 8 WOOD STAIR TOWER - REMOVE WALLS, STAIRS, ROOF, FOUNDATIONS IN THEIR ENTIRETY. SALVAGE VINYL SIDING FOR REUSE.
- 9 WOOD STEPS - REMOVE STEPS, RAILINGS, FOUNDATIONS IN THEIR ENTIRETY.
- 10 CHIMNEY - REMOVE IN ITS ENTIRETY. FROM BASEMENT FLOOR TO ROOF.
- 11 ELECTRICAL, PHONE, CABLE SERVICE ENTRANCES - TO REMAIN.
- 12 CABLE / PHONE ENTRANCE.
- 13 REMOVE WINDOW AND TRIM DOWN TO ROUGH OPENING. REFRAME OPENING FOR WINDOW TYPE D. SEE DRAWINGS 3/4 AND A10a.
- 14 REMOVE WINDOW AND TRIM DOWN TO ROUGH OPENING. PREP FOR WALL INFILL.



|             |   |                 |  |           |  |  |
|-------------|---|-----------------|--|-----------|--|--|
| <b>A-1a</b> | Drawing<br><b>DEMOLITION ELEVATIONS</b>       | Date<br>7/11/14 | Scale<br>1/8" = 1'-0"                  | Architect | <b>SHIELDS ARCHITECTURE</b><br>Cumberland, Maine<br>(207) 776-8926 |  |
|             | Project:<br><b>ADDITION &amp; RENOVATIONS</b> |                 | 214 DANFORTH STREET<br>PORTLAND, MAINE |           |  |  |