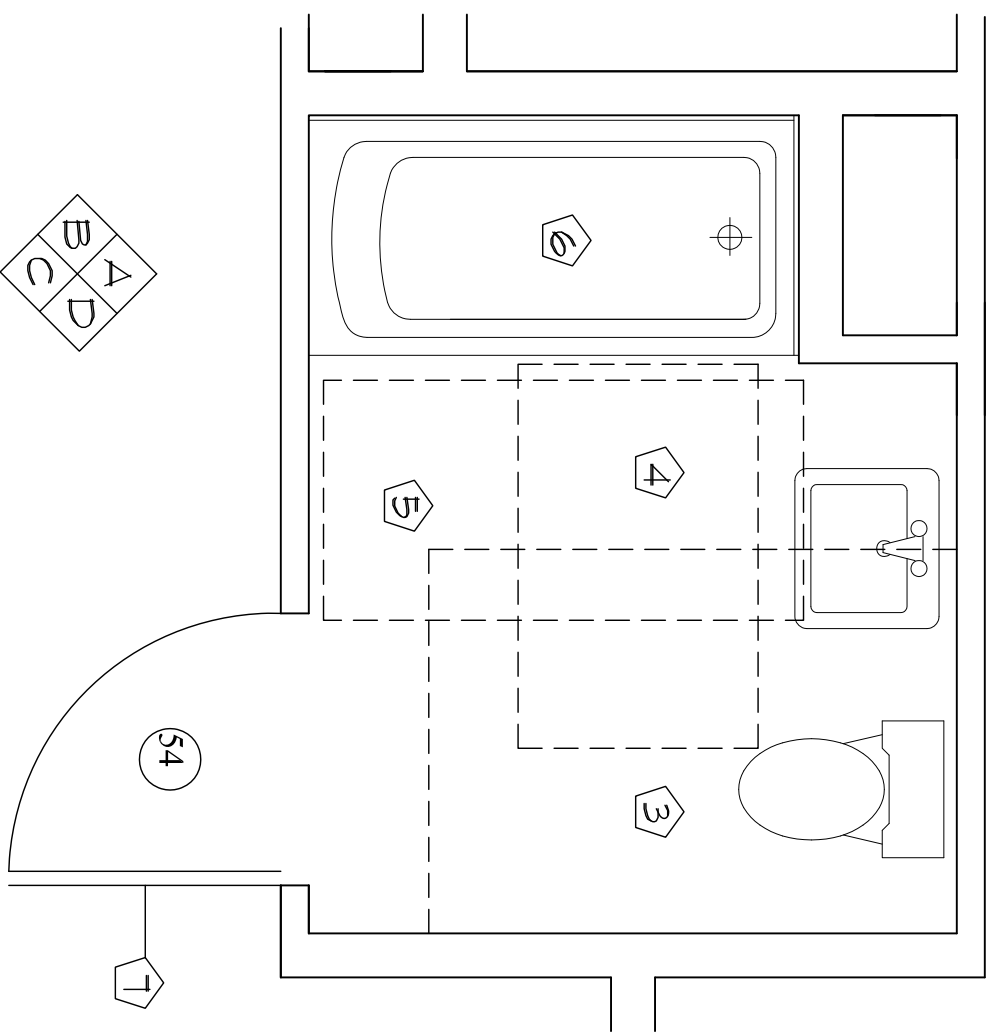
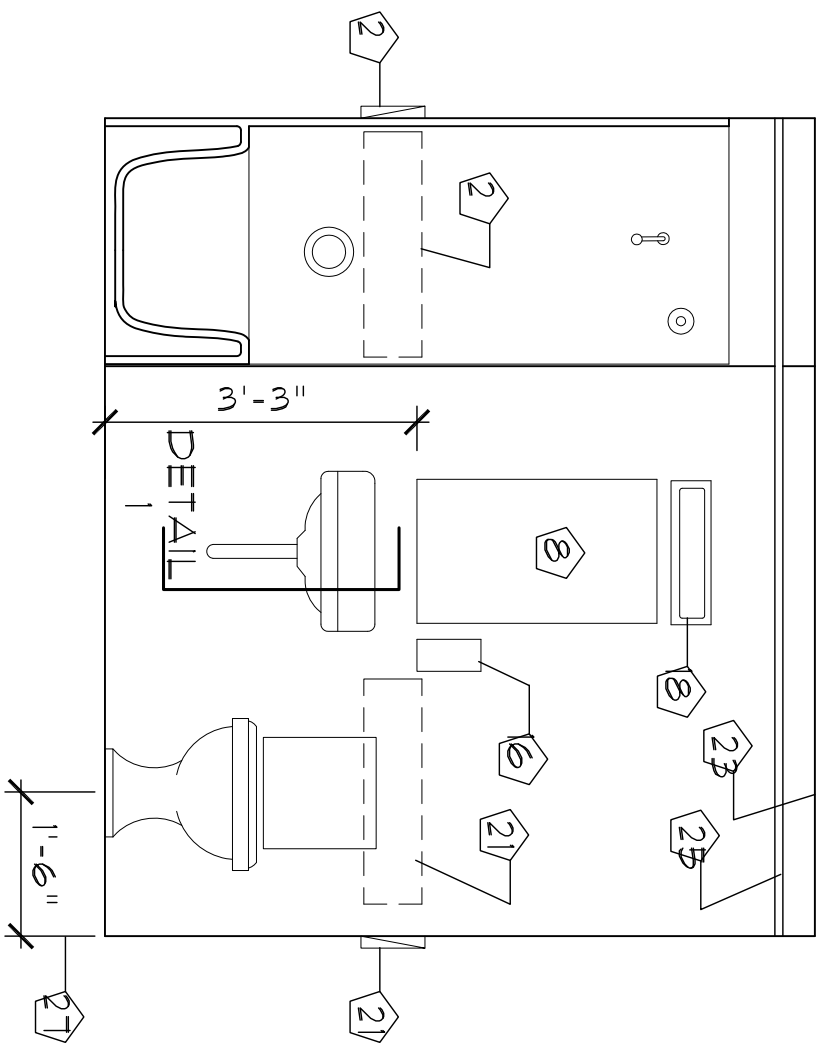
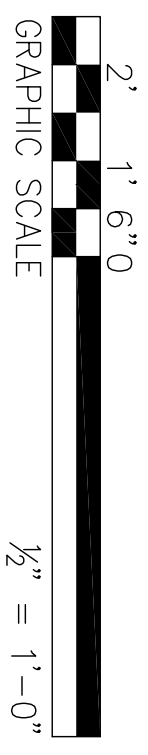


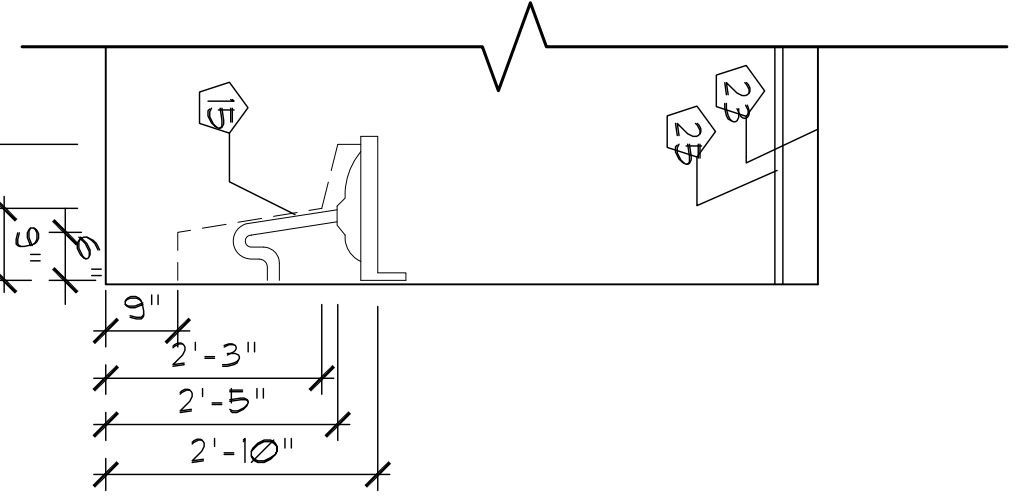
CITY OF PORTLAND



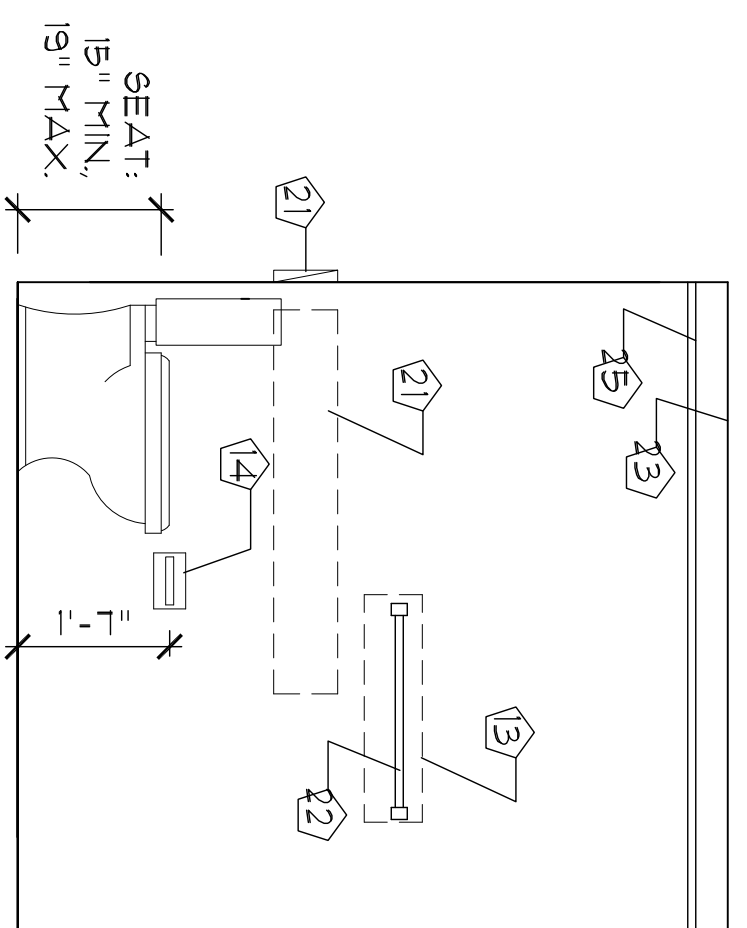
NOTE: BATH 314 IS "OTHER HAND" OF BATH 309.
 ① BATH 309 PLAN
 SCALE: 1/2" = 1'



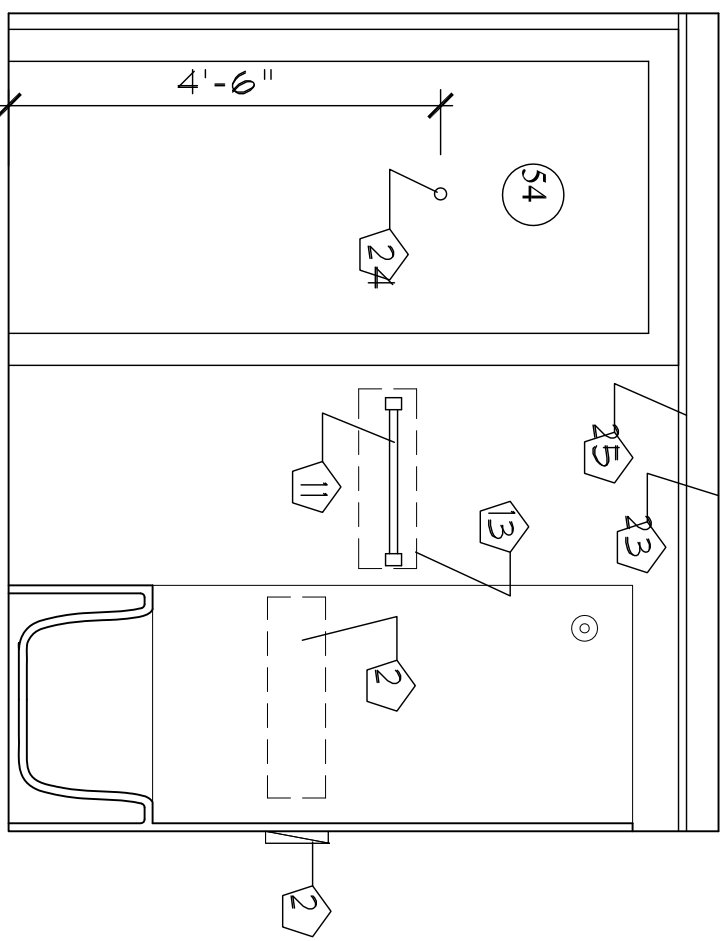
② ELEVATION
 SCALE: 1/2" = 1'



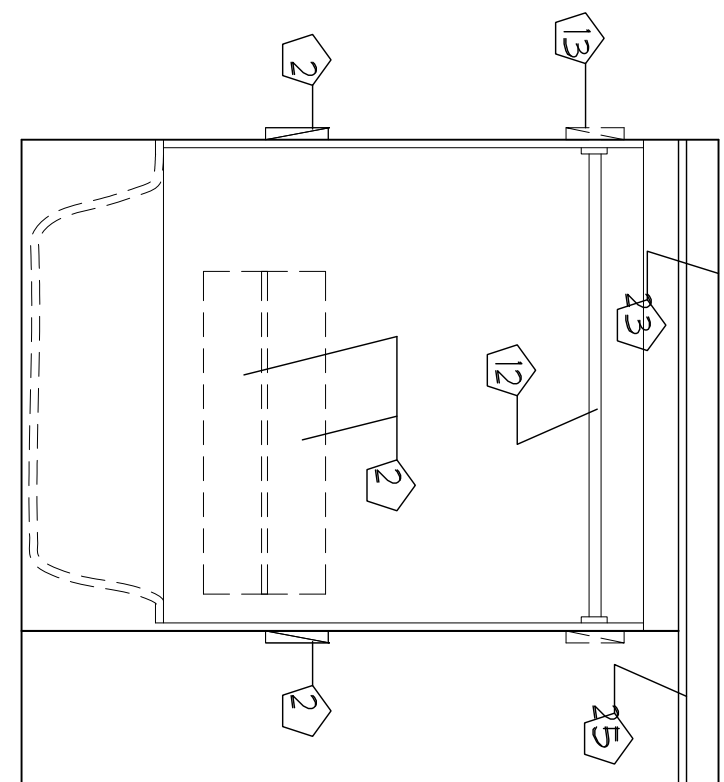
① DETAIL
 SCALE: 1/2" = 1'



③ ELEVATION
 SCALE: 1/2" = 1'



④ ELEVATION
 SCALE: 1/2" = 1'



⑤ ELEVATION
 SCALE: 1/2" = 1'

GENERAL NOTE:
 1. PROVIDE SOLID WOOD BLOCKING AT ALL WALL MOUNTED ITEMS.
 2. GC TO COORDINATE SHOWER & TUB ENCLOSURE DIMENSIONS WITH FRAMING DIMENSIONS.

ACCESSIBILITY NOTE
 1. BATHROOMS 309 & 314 ARE DESIGNED PER 2009 IBC TO MEET ANSI A117.1 TYPE B, "OPTION A" BATHROOM REQUIREMENTS.

KEYED NOTES

- ① NOT USED.
- ② SOLID WOOD TUB / SHOWER ENCLOSURE REINFORCEMENT LOCATED FOR FUTURE GRAB BARS.
- ③ 66" x 48" CLEAR SPACE AT TOILET.
- ④ 48" x 30" CLEAR SPACE AT LAVATORY.
- ⑤ 60" x 30" CLEAR SPACE AT ROLL-IN SHOWER
- ⑥ 5'-0" x 2'-6" TUB/SHOWER ENCLOSURE W/REINFORCEMENT FOR FUTURE GRAB BARS.
- ⑦ 2'-10" x 6'-8" DOOR
- ⑧ BOTTOM OF REFLECTIVE SURFACE OF MIRROR AT 3'-2" MAX.
- ⑨ NOT USED.
- ⑩ NOT USED.
- ⑪ 1'-6" TOWEL BAR AT 48" AFF.
- ⑫ CURTAIN ROD.
- ⑬ SOLID WOOD BLOCKING (TYP)
- ⑭ TOILET PAPER DISPENSER
- ⑮ PIPE WRAP.
- ⑯ SOAP DISH.
- ⑰ NOT USED.
- ⑱ LIGHT FIXTURE. PROVIDE HC ACCESSIBLE WALL SWITCH.
- ⑲ NOT USED.
- ⑳ NOT USED./
- ㉑ SOLID WOOD BLOCKING FOR FUTURE GRAB BARS (TYP)
- ㉒ 2'-0" TOWEL BAR AT 48" AFF.
- ㉓ EXISTING G5 CEILING.
- ㉔ ROBE HOOK
- ㉕ HUNG ACOUSTIC CEILING - 4" CONSTRUCTION SPACE.
- ㉖ NOT USED.
- ㉗ CENTER LINE OF TOILET SHALL BE EXACTLY 1'-6" FROM ADJACENT WALL.

	<p>SHIELDS ARCHITECTURE 216 Range Road, Cumberland, Maine (207) 776-8926</p>	<p>Architect Date: 7/11/14 Scale: 1/2" = 1'-0"</p>	<p>Project: ADDITION & RENOVATIONS 214 DANFORTH PORTLAND, MAINE</p>
<p>Drawing INTERIOR ELEVATIONS BATHROOMS 309 & 314</p>		<p>A-7c</p>	