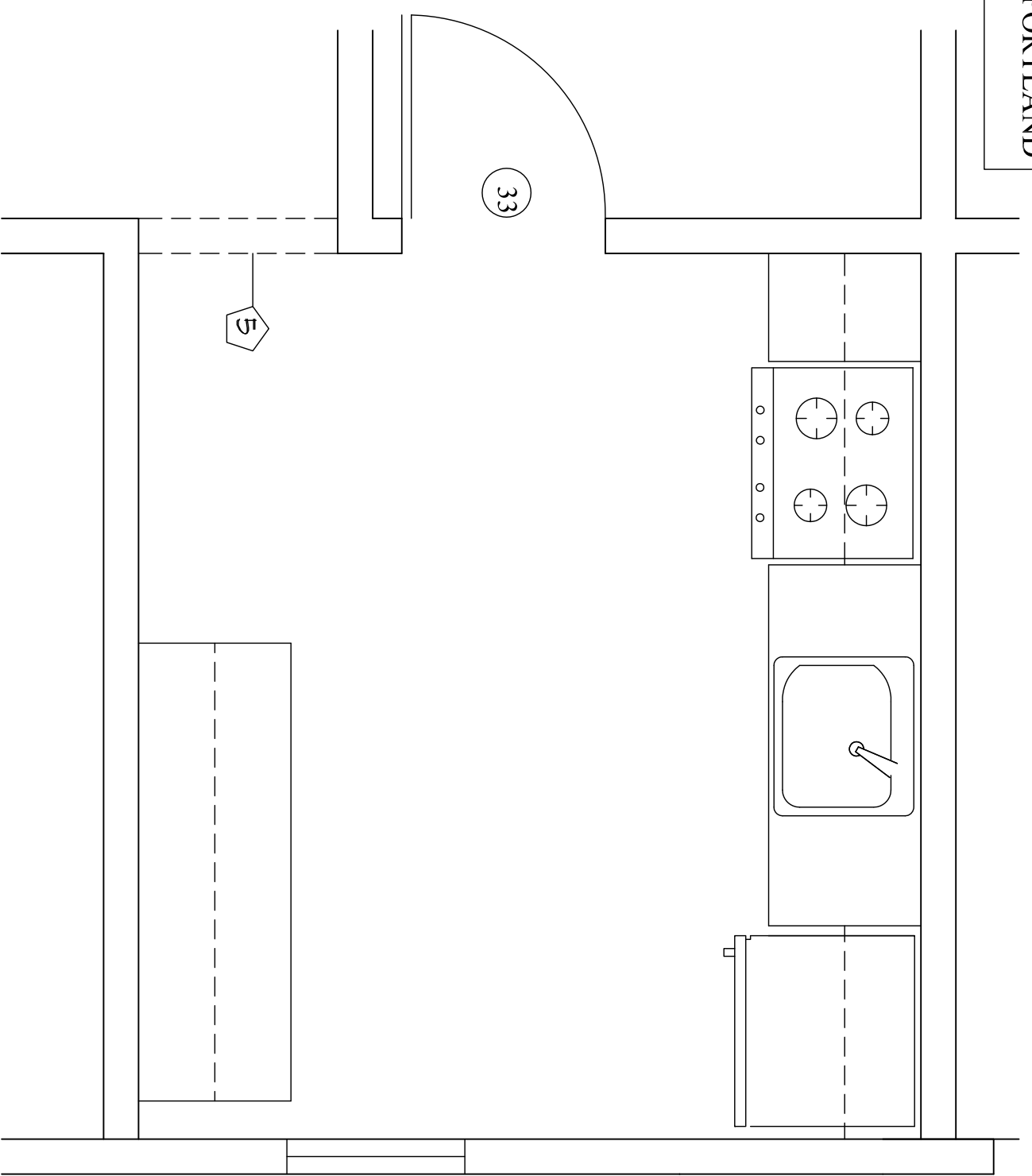
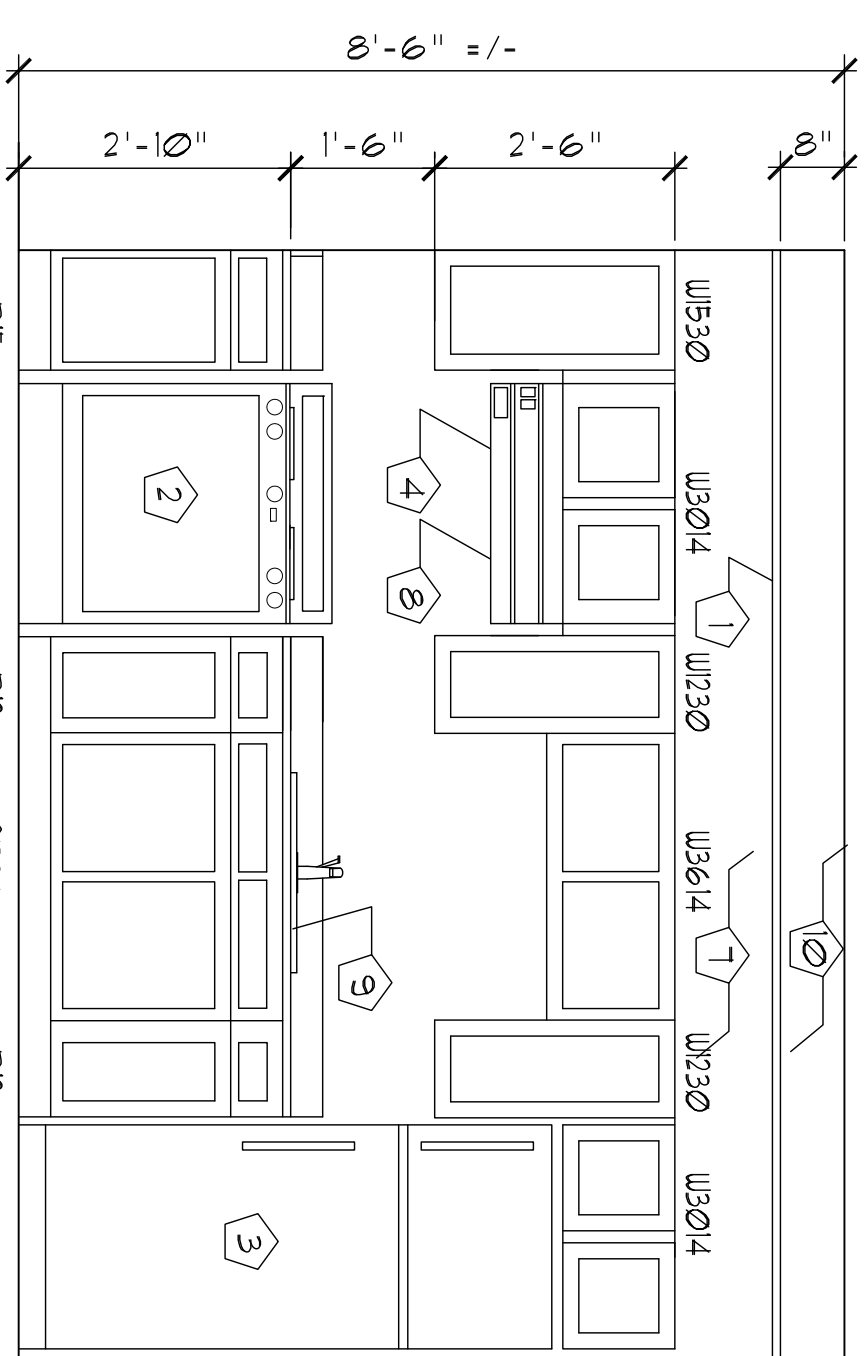
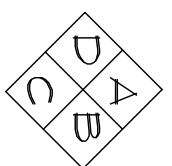


CITY OF PORTLAND

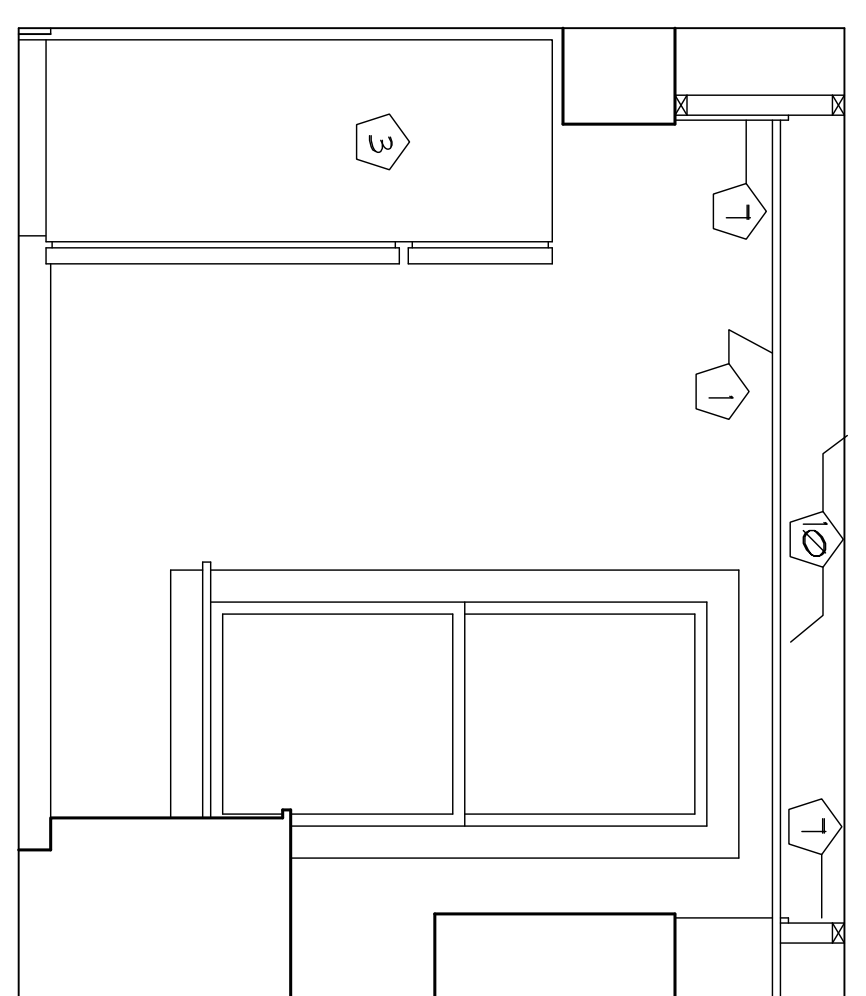


NOTE: KITCHEN 212 IS "OTHER HAND" OF KITCHEN 209.

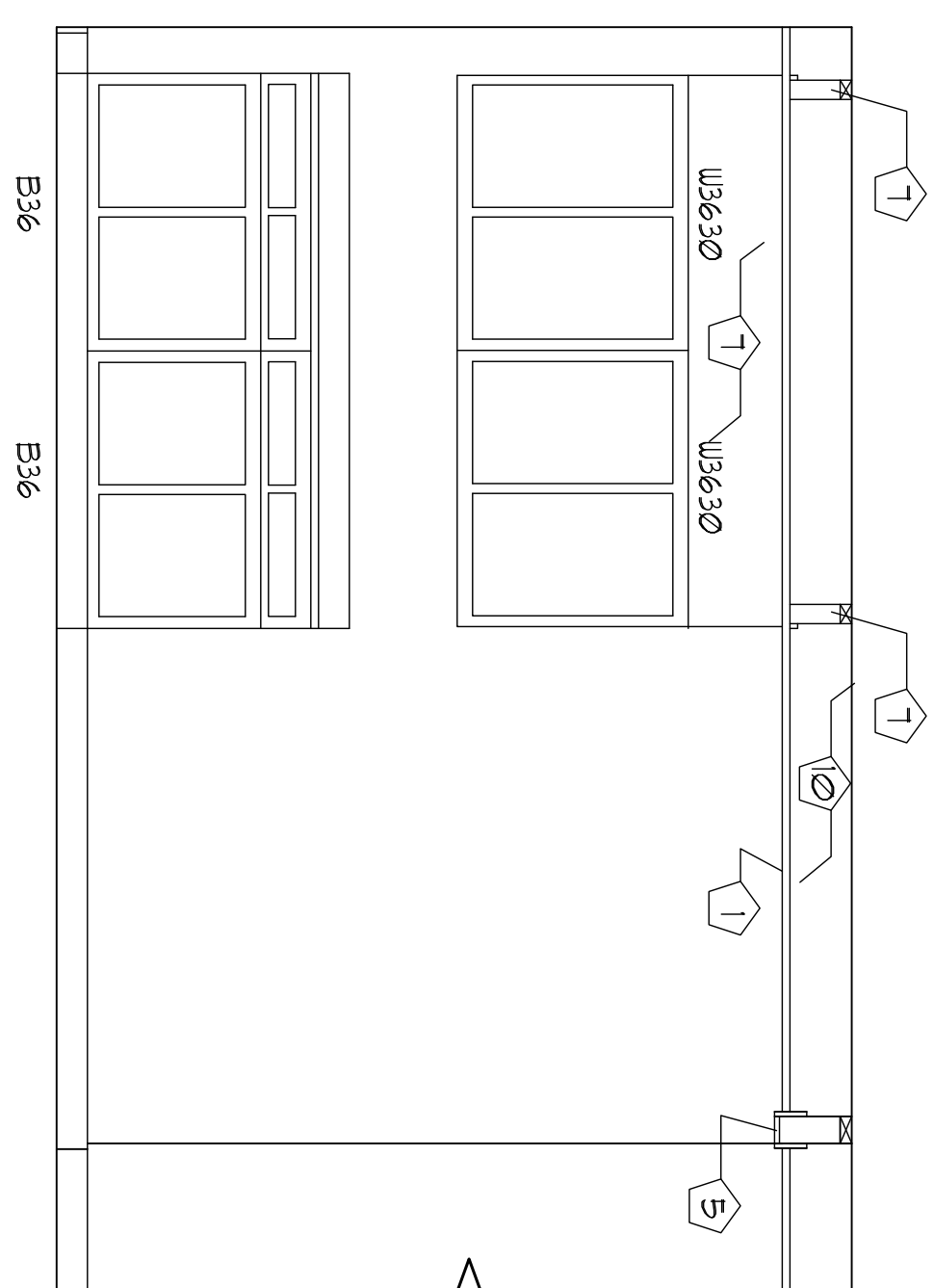
1 KITCHEN 209 PLAN
SCALE: 1/2" = 1'-0"



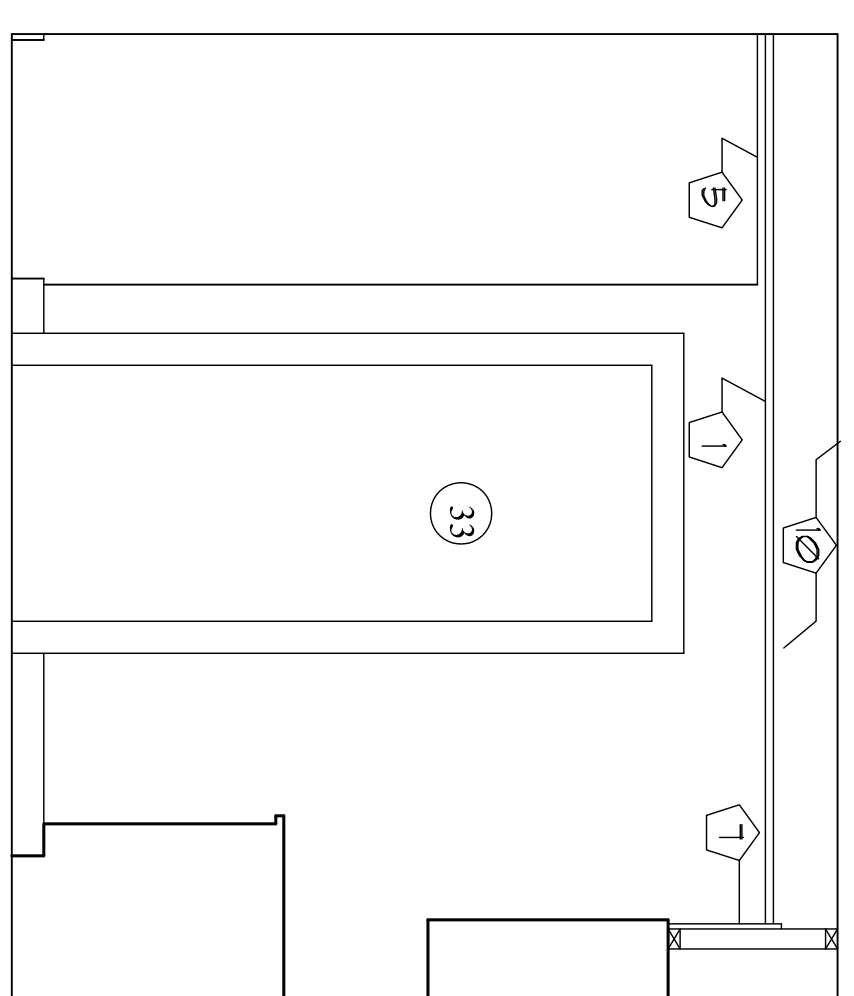
A ELEVATION
SCALE: 1/2" = 1'-0"



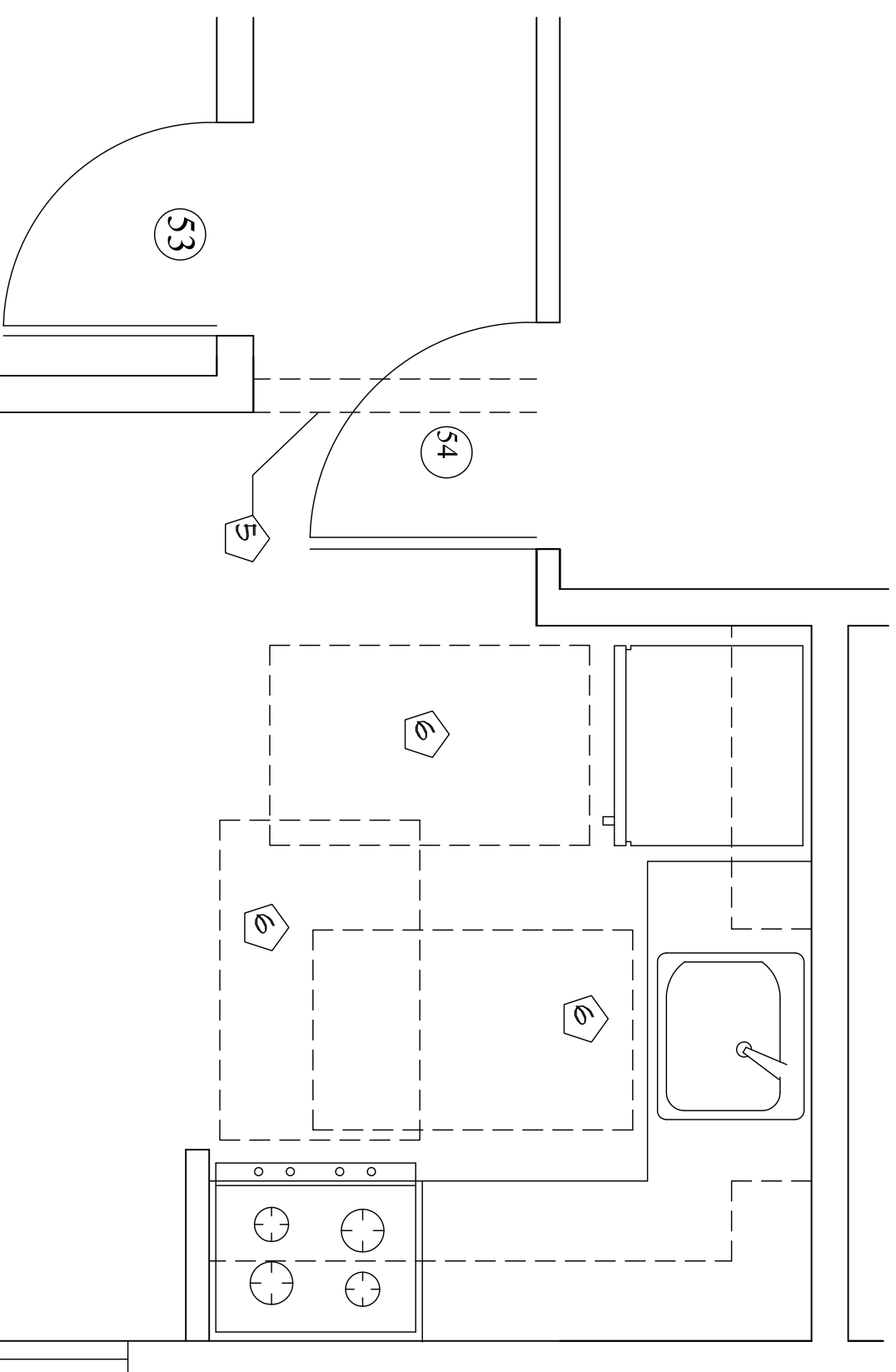
B ELEVATION
SCALE: 1/2" = 1'-0"



C ELEVATION
SCALE: 1/2" = 1'-0"

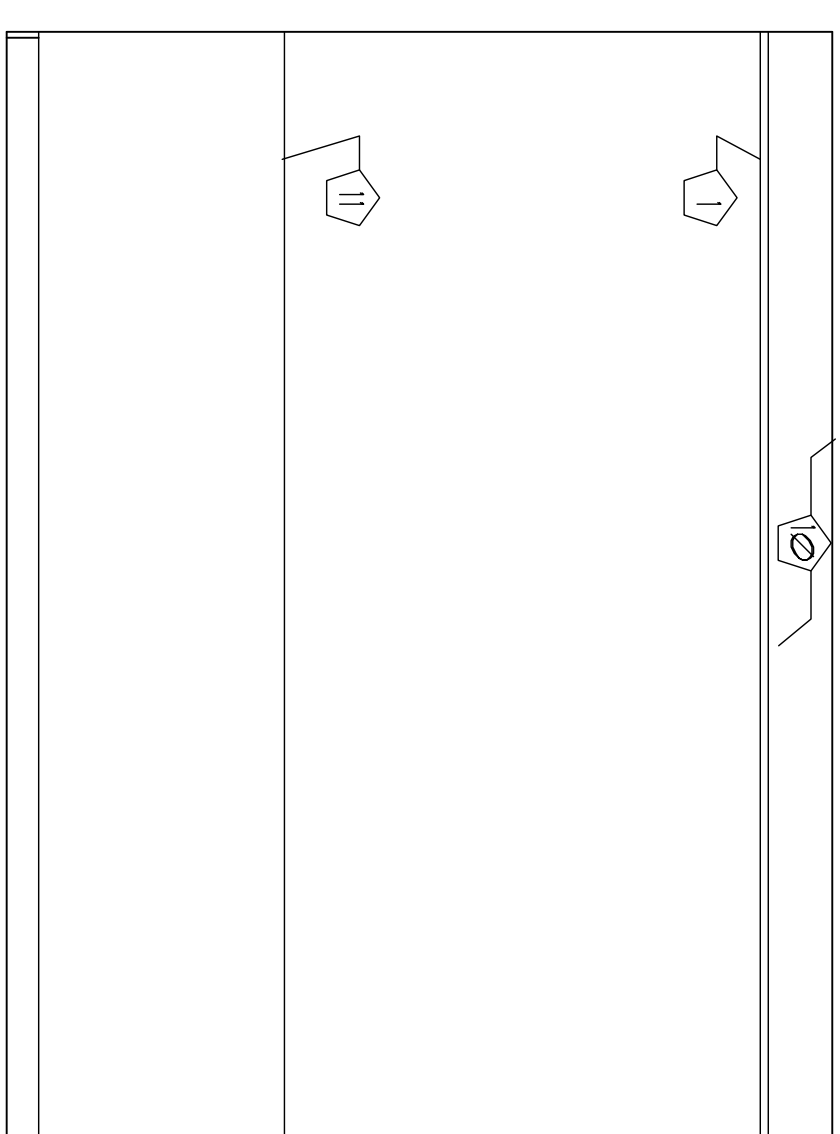
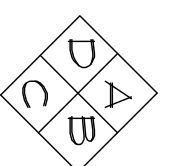


D ELEVATION
SCALE: 1/2" = 1'-0"

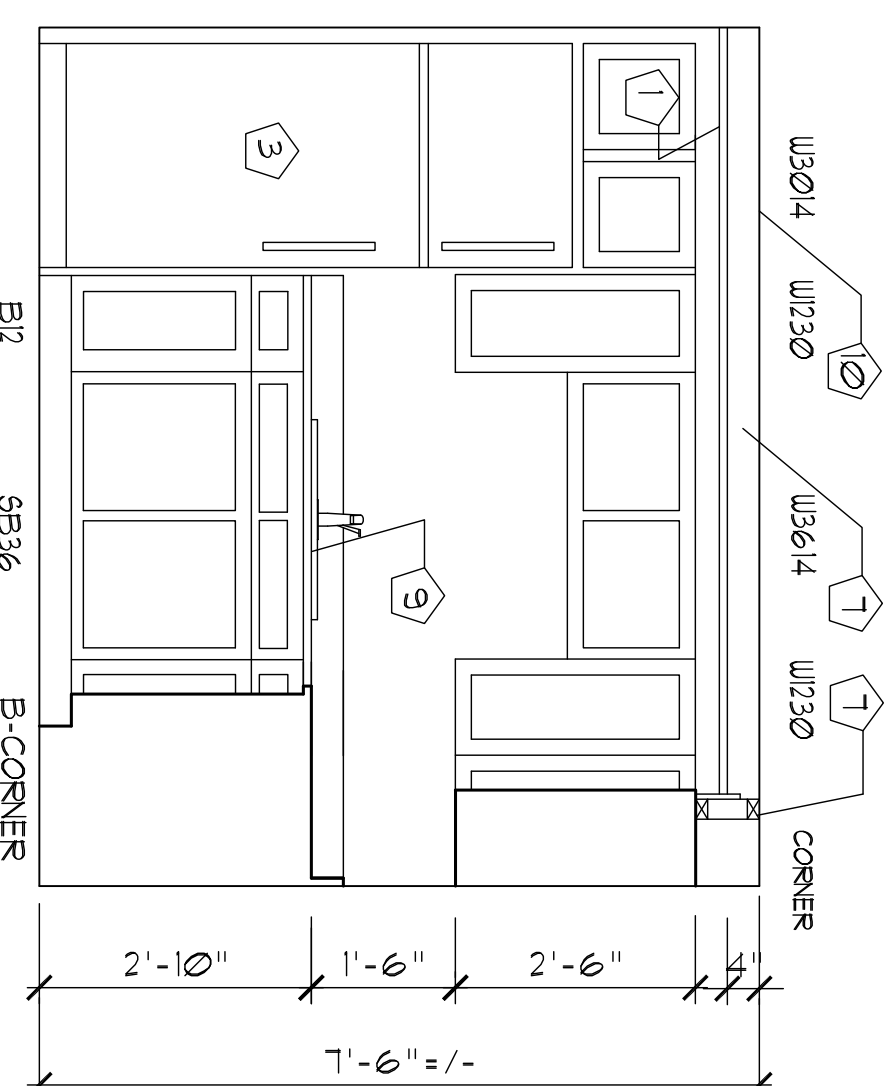


NOTE: KITCHEN 310 IS "OTHER HAND" OF KITCHEN 308.

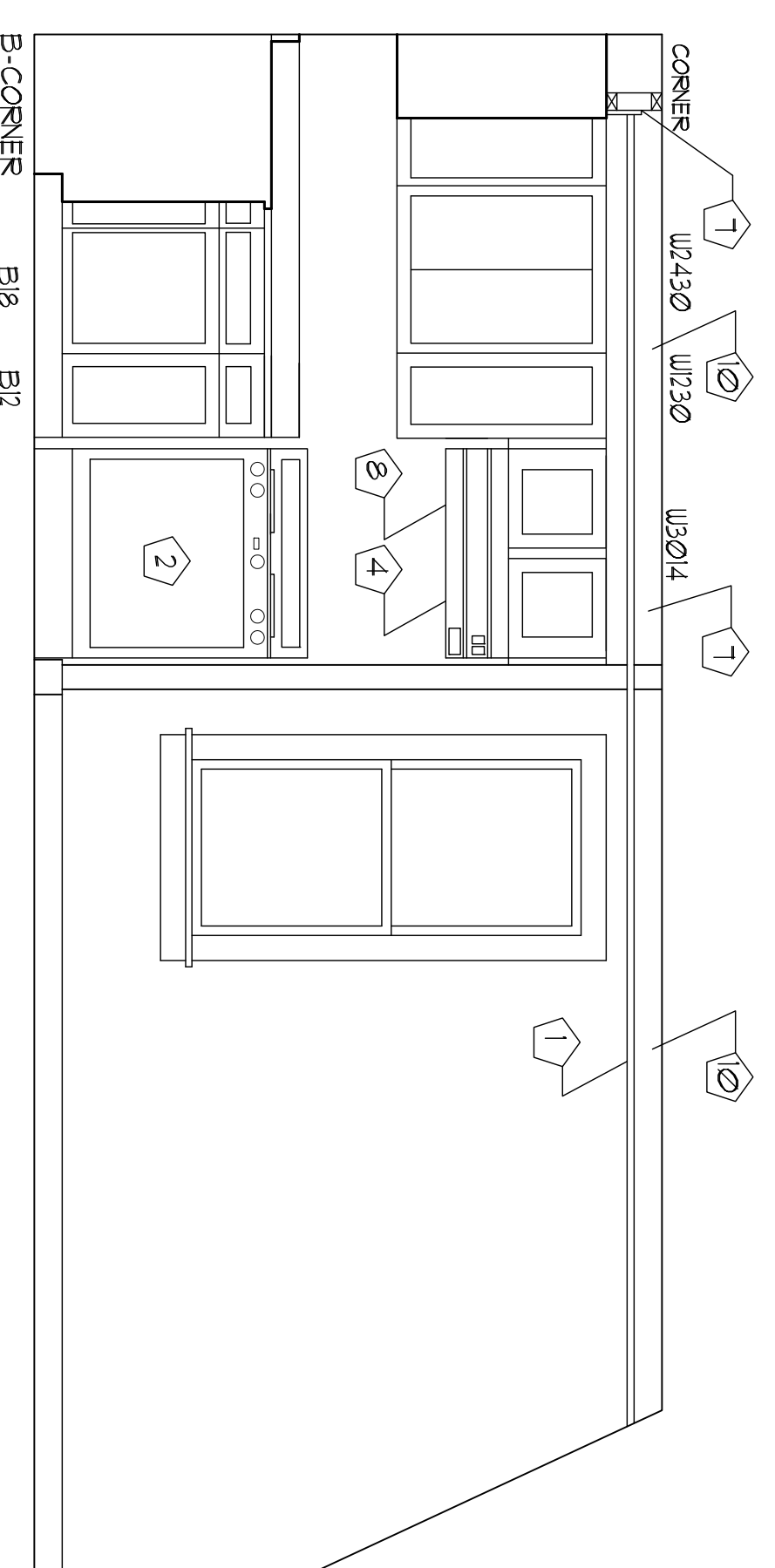
1 KITCHEN 308 PLAN
SCALE: 1/2" = 1'-0"



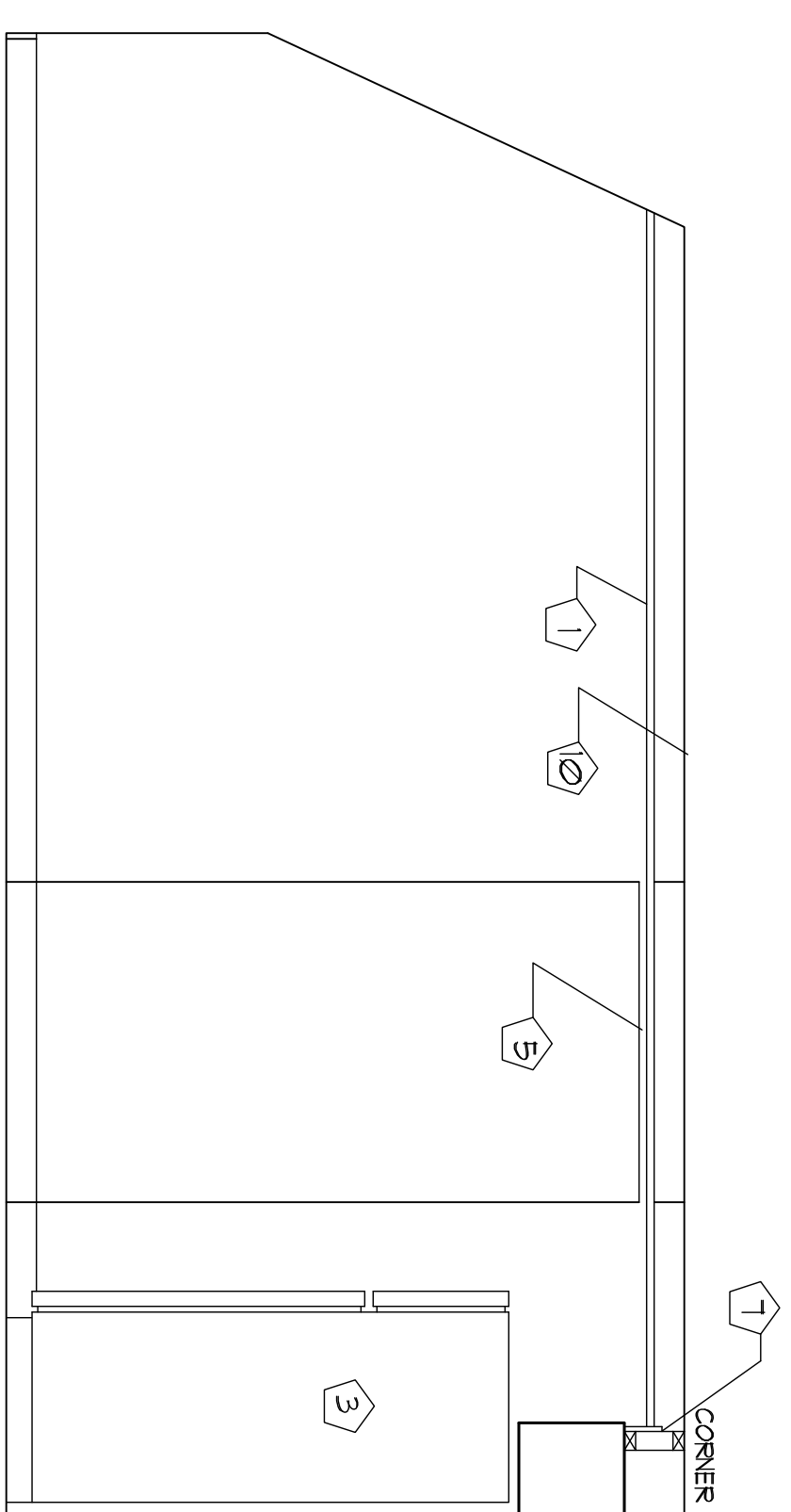
A ELEVATION
SCALE: 1/2" = 1'-0"



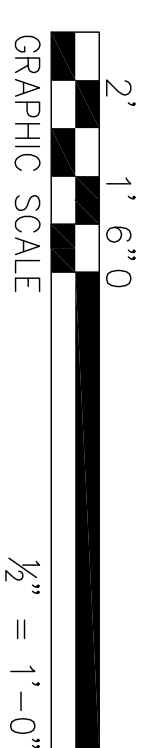
B ELEVATION
SCALE: 1/2" = 1'-0"



C ELEVATION
SCALE: 1/2" = 1'-0"



D ELEVATION
SCALE: 1/2" = 1'-0"



GENERAL NOTE - PROVIDE SOLID WOOD BLOCKING AT ALL WALL MOUNTED ITEMS.
ACCESSIBILITY NOTE
1. PER IBC 2009, KITCHENS 308 & 310 ARE DESIGNED IN ACCORDANCE WITH ANSI A117.1 AS TYPE B UNITS.
KEYED NOTES

- 1 HUNG ACOUSTIC TILE CEILING.
- 2 RANGE, 30"W x 28" D NOMINAL DIMENSIONS, ADA COMPLIANT, FRONT CONTROLS.
- 3 REFRIGERATOR 28"W x 31" D x 66 3/4" H NOMINAL DIMENSIONS - ENERGY STAR & ADA COMPLIANT.
- 4 HARD DUCTED ENERGY STAR RANGE HOOD.
- 5 G.B. SOFFIT - PTD. AT CEILING GRID CHANGE.
- 6 30" x 48" CLEAR SPACE AT APPLIANCES (TYP).
- 7 G.B. SOFFIT - PTD.
- 8 PROVIDE A SEPARATE ACCESSIBLE WALL-SWITCH WIRED TO RANGE HOOD AND LIGHT. MOUNT SWITCH AT 44" AFF.
- 9 KITCHEN SINK - ADA COMPLIANT.
- 10 CONSTRUCTION SPACE BETWEEN HUNG CEILING AND EXISTING G.B. CEILING - 8" ON SECOND FLOOR, 4" ON THIRD FLOOR.
- 11 LINE INDICATES BREAK IN WALL PLANE.



Architect
SHIELDS ARCHITECTURE
216 Range Road, Cumberland, Maine
(207) 776-8926

Date: 7/11/14
Scale: 1/2" = 1'-0"
Project: **ADDITION & RENOVATIONS**
214 DANFORTH
PORTLAND, MAINE

Drawing
**INTERIOR ELEVATIONS
KITCHENS 209, 212, 308 & 310**

A-7a