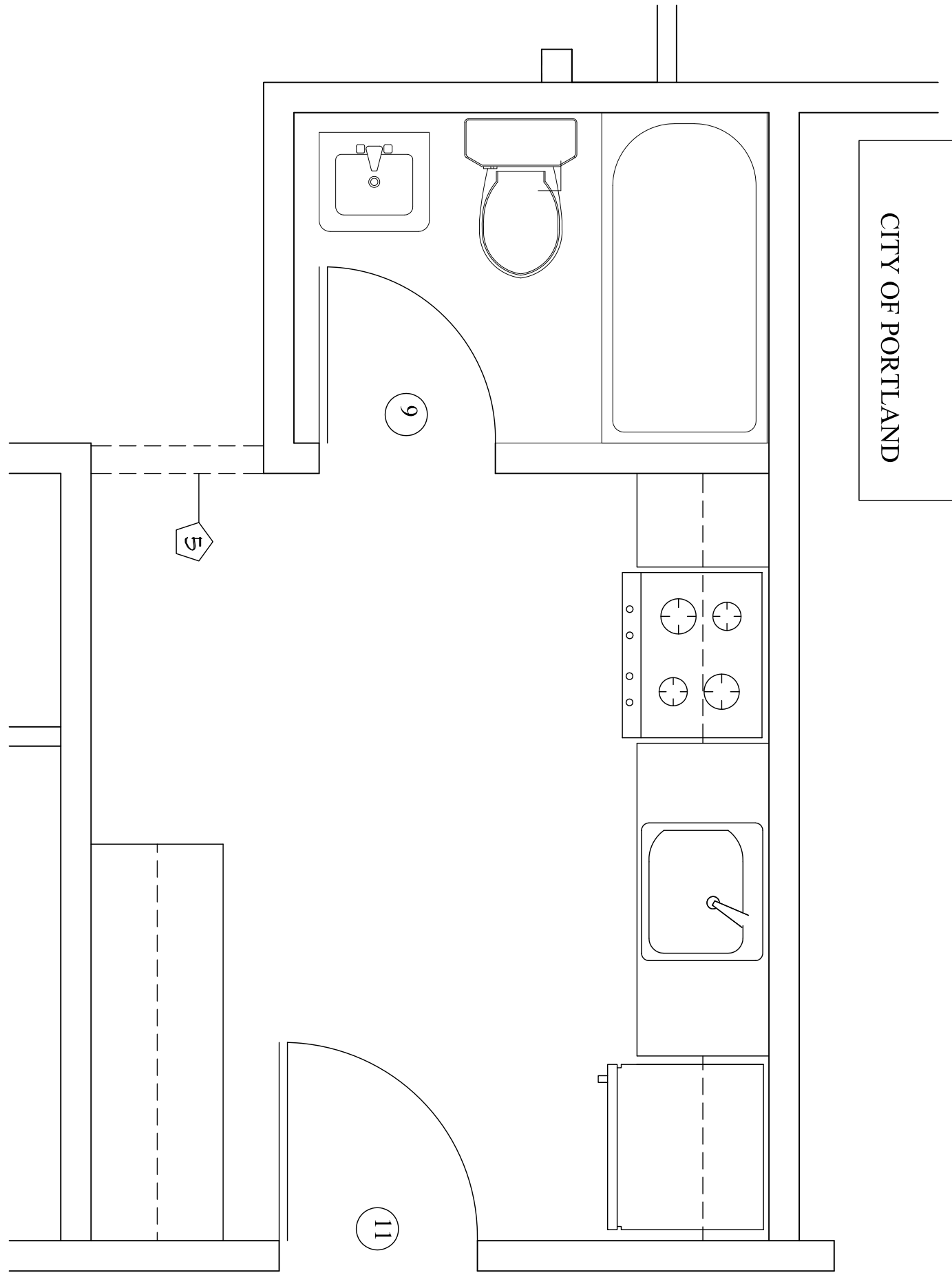
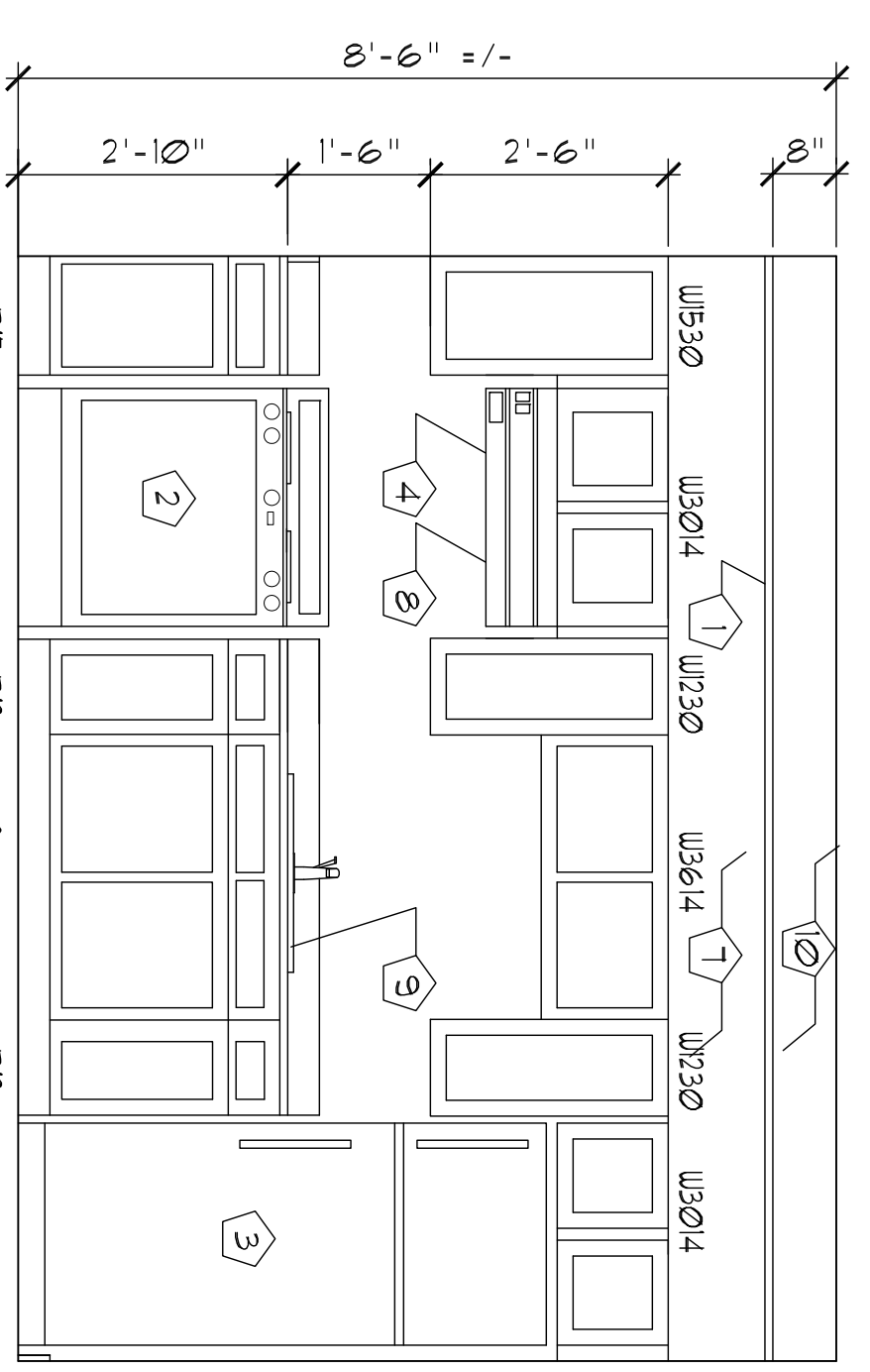
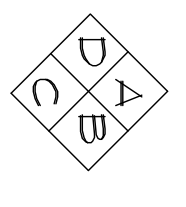


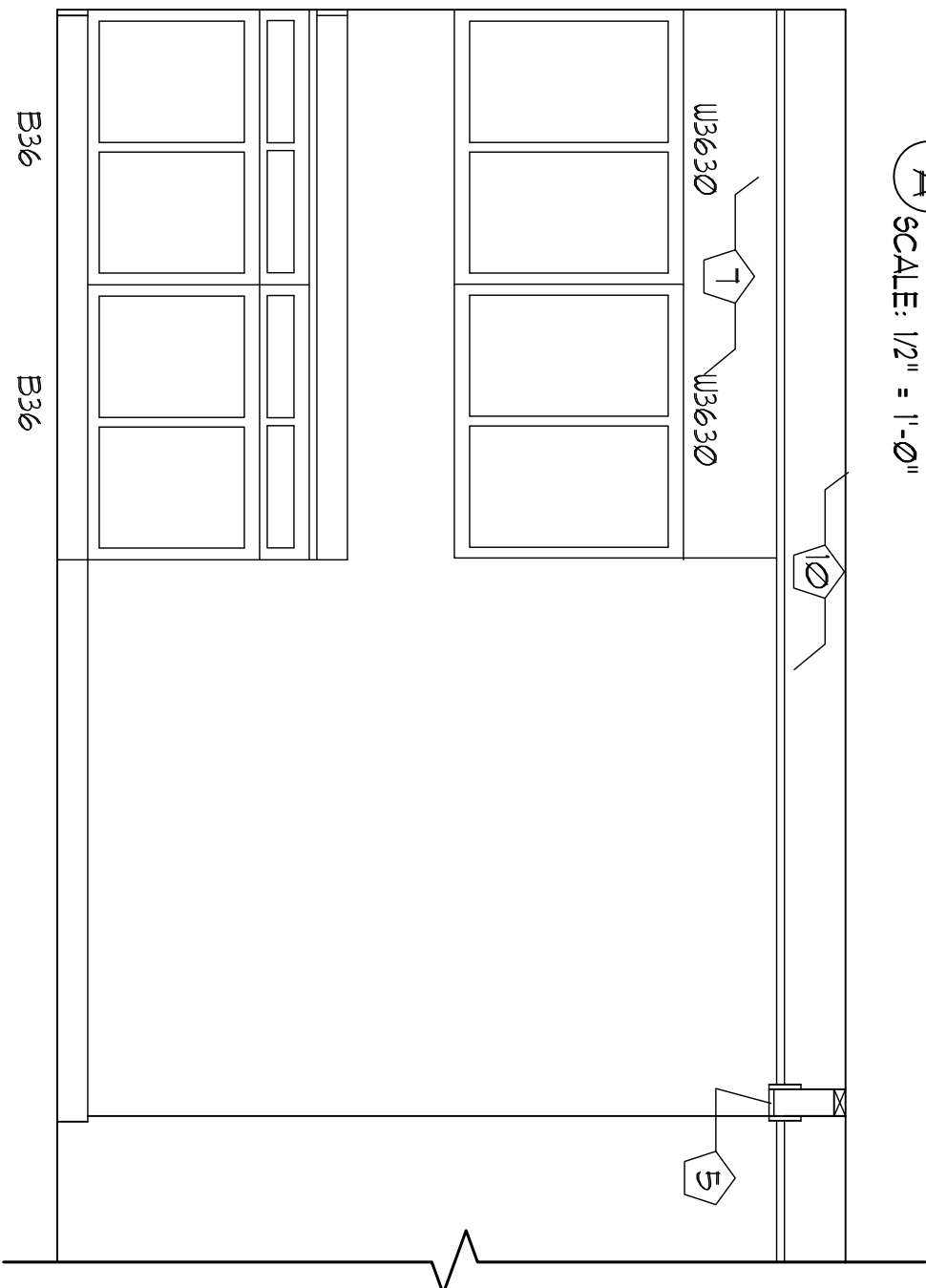
CITY OF PORTLAND



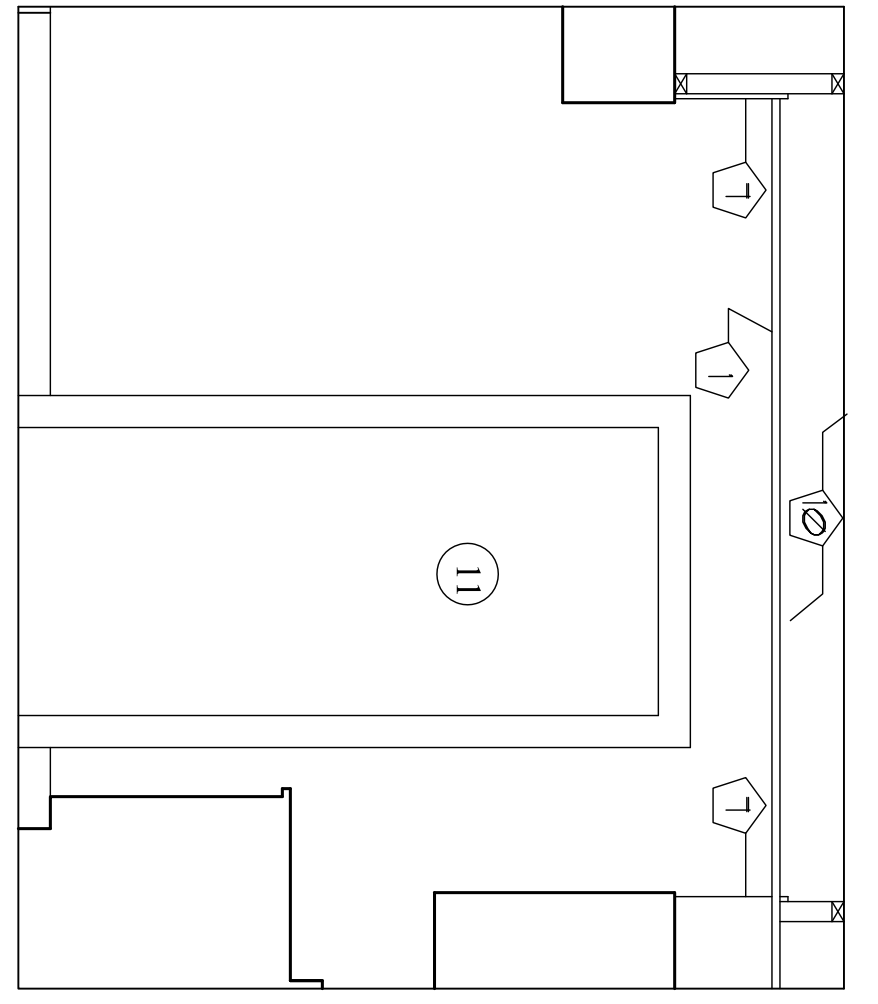
1 KITCHEN 109 PLAN  
SCALE: 1/2" = 1'-0"



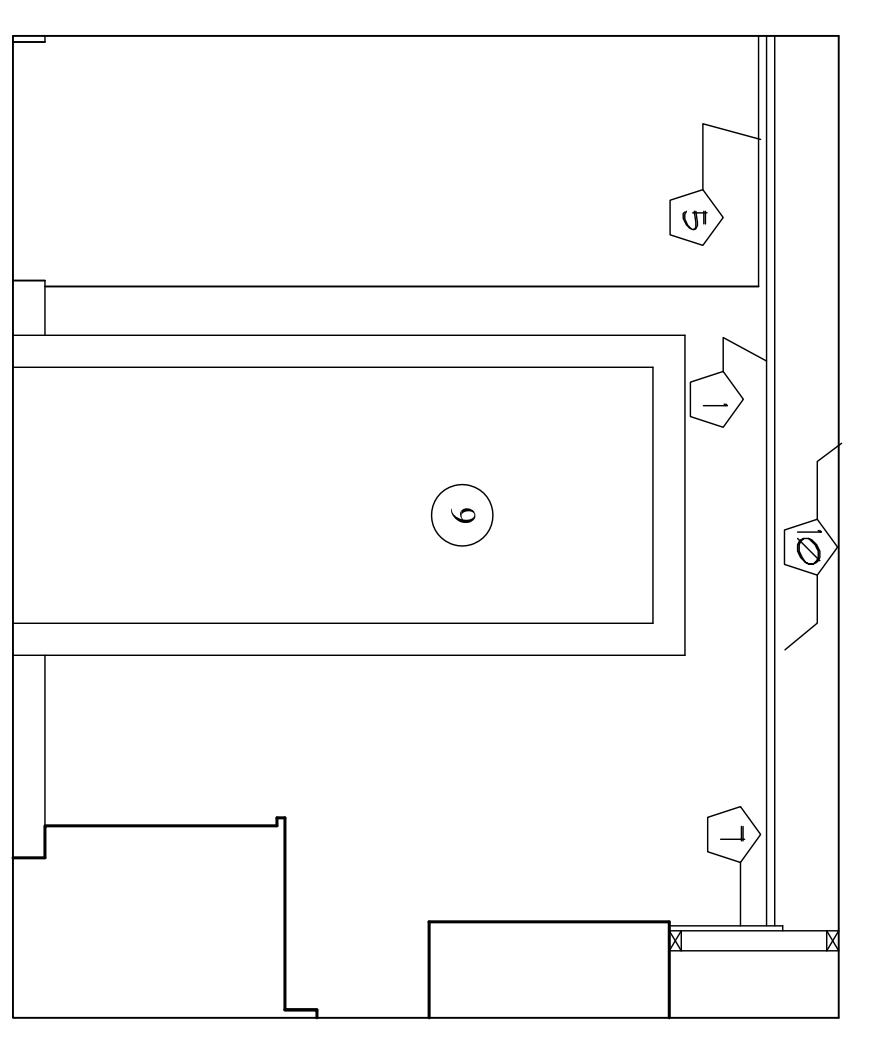
A ELEVATION  
SCALE: 1/2" = 1'-0"



C ELEVATION  
SCALE: 1/2" = 1'-0"



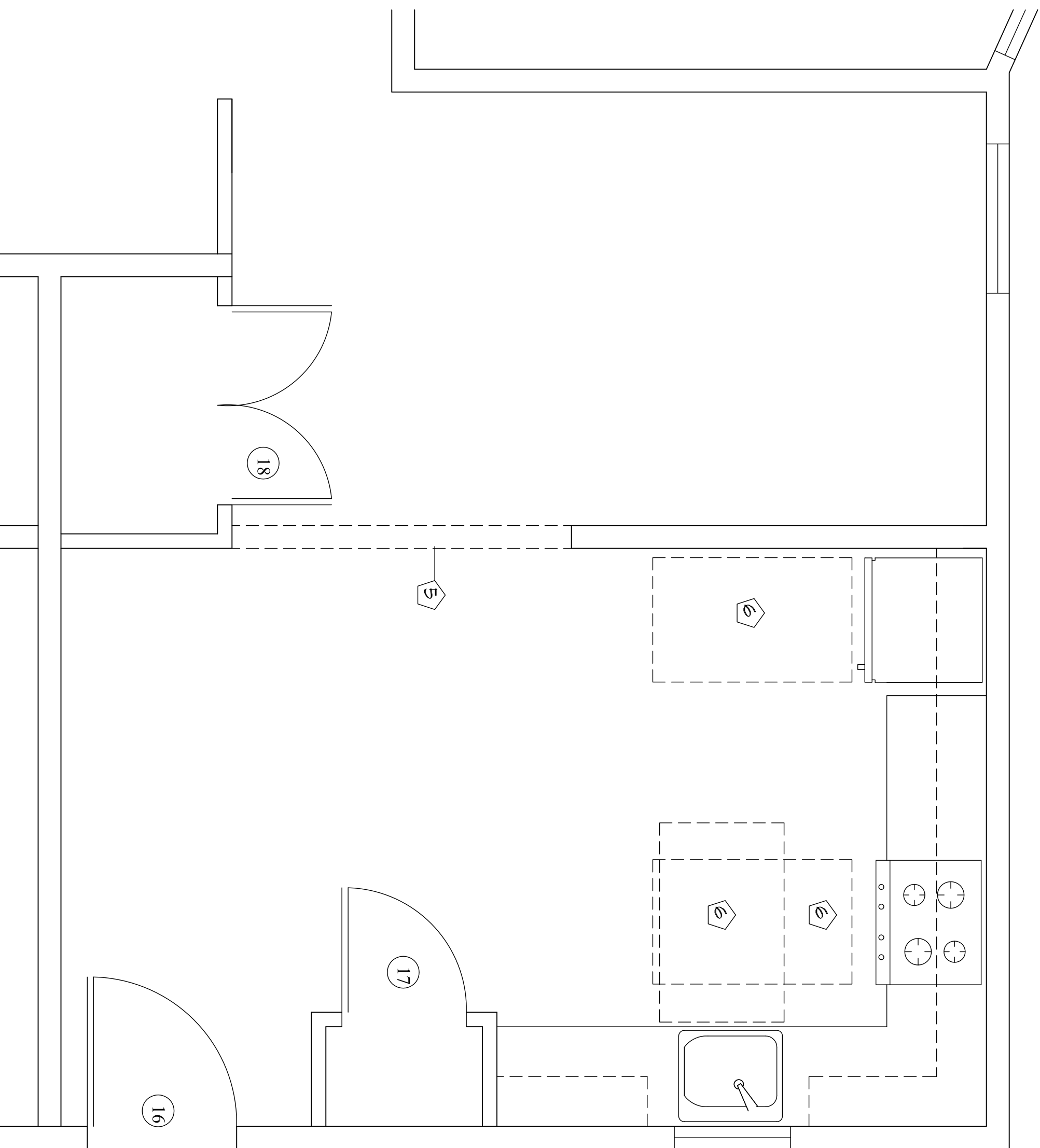
B ELEVATION  
SCALE: 1/2" = 1'-0"



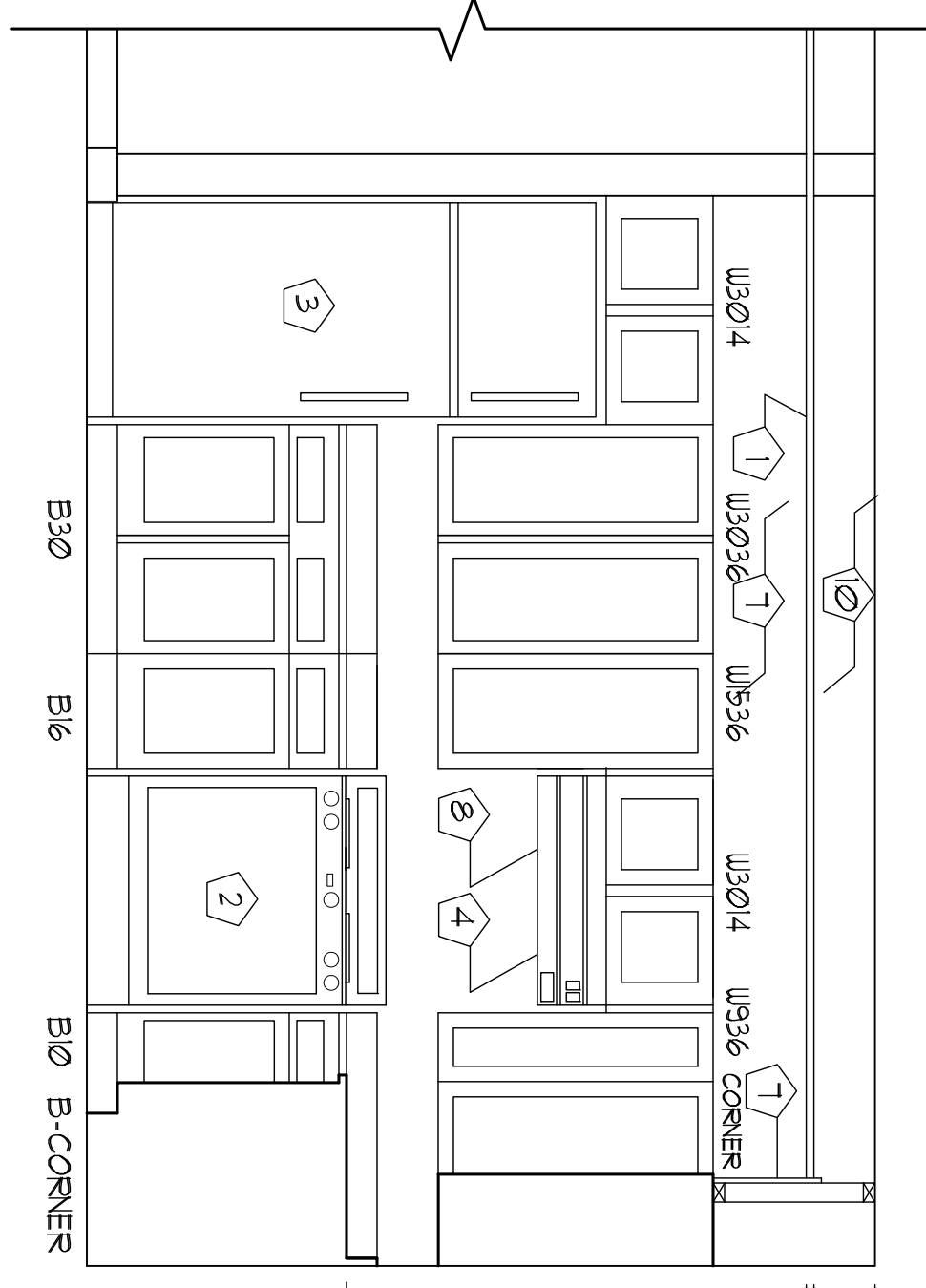
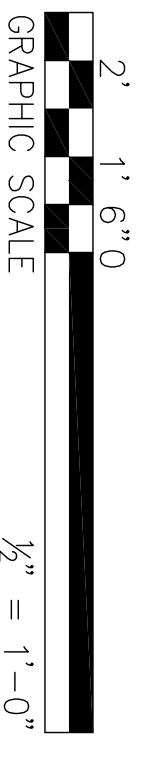
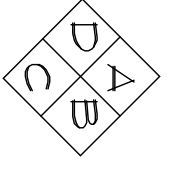
D ELEVATION  
SCALE: 1/2" = 1'-0"

GENERAL NOTE - PROVIDE SOLID WOOD BLOCKING AT ALL WALL MOUNTED ITEMS, ACCESSIBILITY NOTE  
1. KITCHEN 114 IS DESIGNED IN ACCORDANCE WITH THE UNIFORM FEDERAL ACCESSIBILITY STANDARDS (UFAS).  
KEYED NOTES

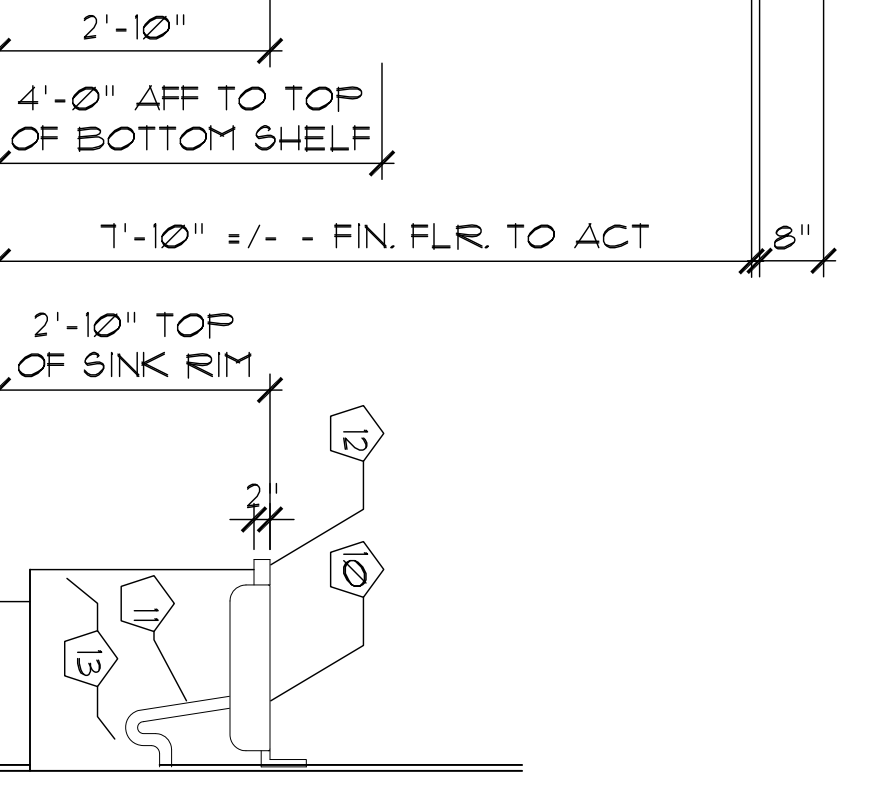
- 1 HUNG ACOUSTIC TILE CEILING.
- 2 RANGE, 30"W x 28"D NOMINAL DIMENSIONS, ADA COMPLIANT, FRONT CONTROLS.
- 3 REFRIGERATOR 28"W x 31"D x 66 3/4"H NOMINAL DIMENSIONS - ENERGY STAR & ADA COMPLIANT.
- 4 HARD DUCTED ENERGY STAR RANGE HOOD.
- 5 G.B. SOFFIT - PTD. AT CEILING GRID CHANGE.
- 6 30" x 48" CLEAR SPACE AT APPLIANCES. (TYP)
- 7 G.B. SOFFIT - PTD.
- 8 PROVIDE A SEPARATE ACCESSIBLE WALL SWITCH WIRED TO RANGE HOOD AND LIGHT. MOUNT SWITCH AT 44" AFF.
- 9 KITCHEN SINK - ADA COMPLIANT.
- 10 8" CONSTRUCTION SPACE BETWEEN HUNG CEILING AND EXISTING G.B. CEILING.
- 11 PIPE WRAP.
- 12 UFAS 4.34.6.5 (6) - "COUNTER THICKNESS AND SUPPORTING STRUCTURE SHALL BE 2 IN (50 MM) MAXIMUM OVER THE REQUIRED CLEAR SPACE."
- 13 AT OPEN AREAS BELOW SINK & COUNTERTOP:  
1. EXTEND FLOORING & WALL BASE.  
2. FINISH ALL EXPOSED SURFACES



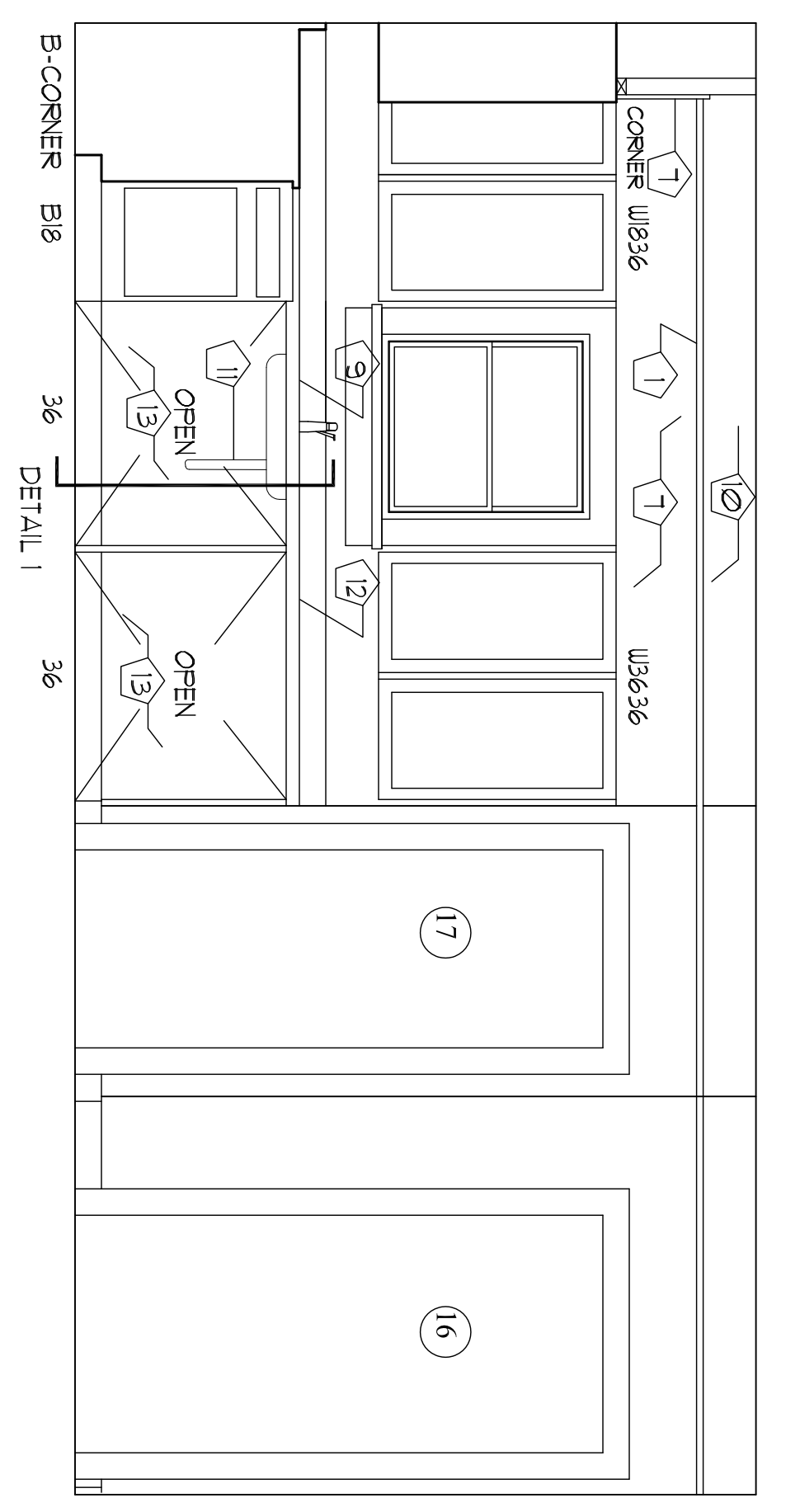
2 KITCHEN 114 PLAN  
SCALE: 1/2" = 1'-0"



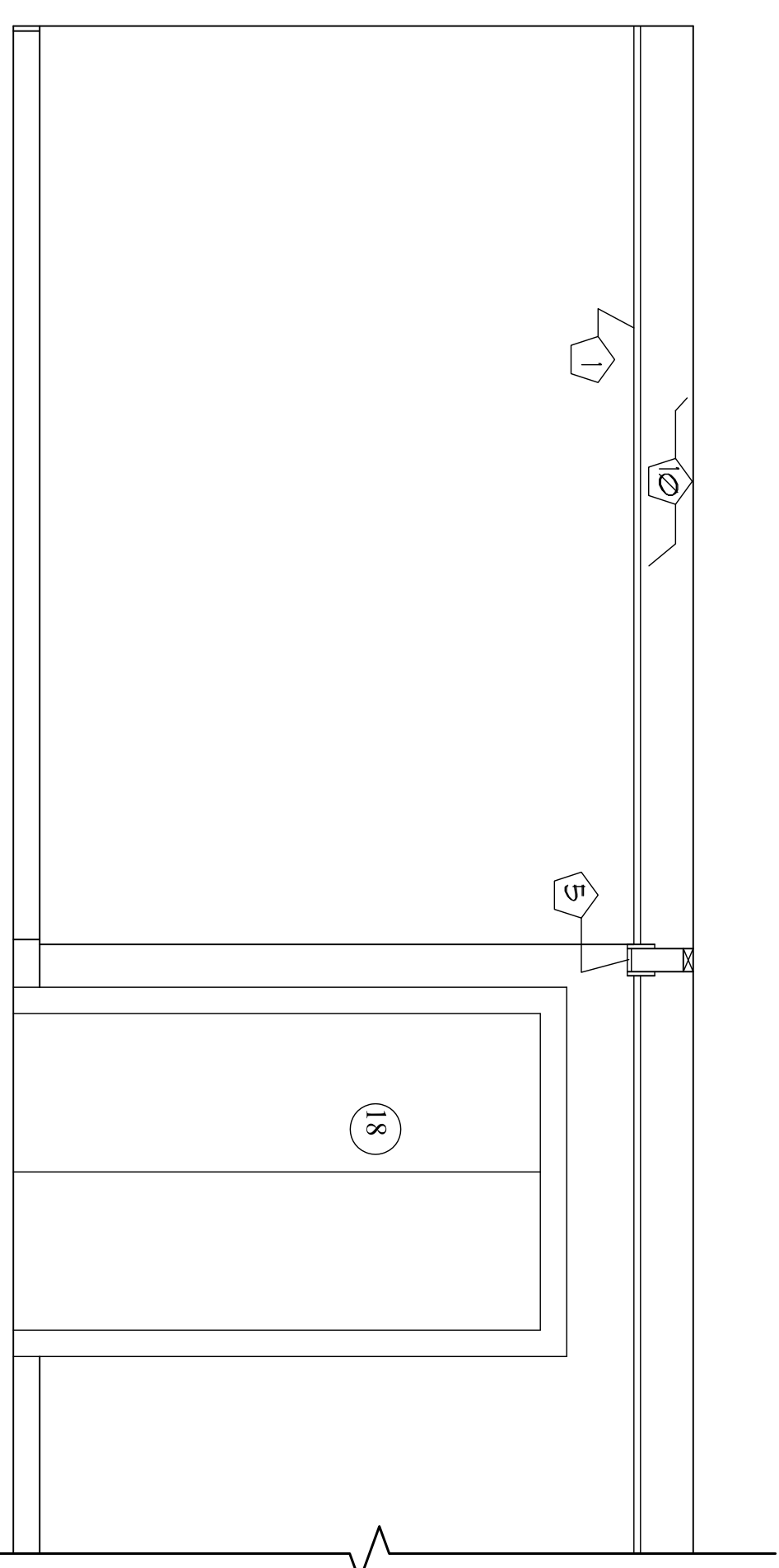
A ELEVATION  
SCALE: 1/2" = 1'-0"



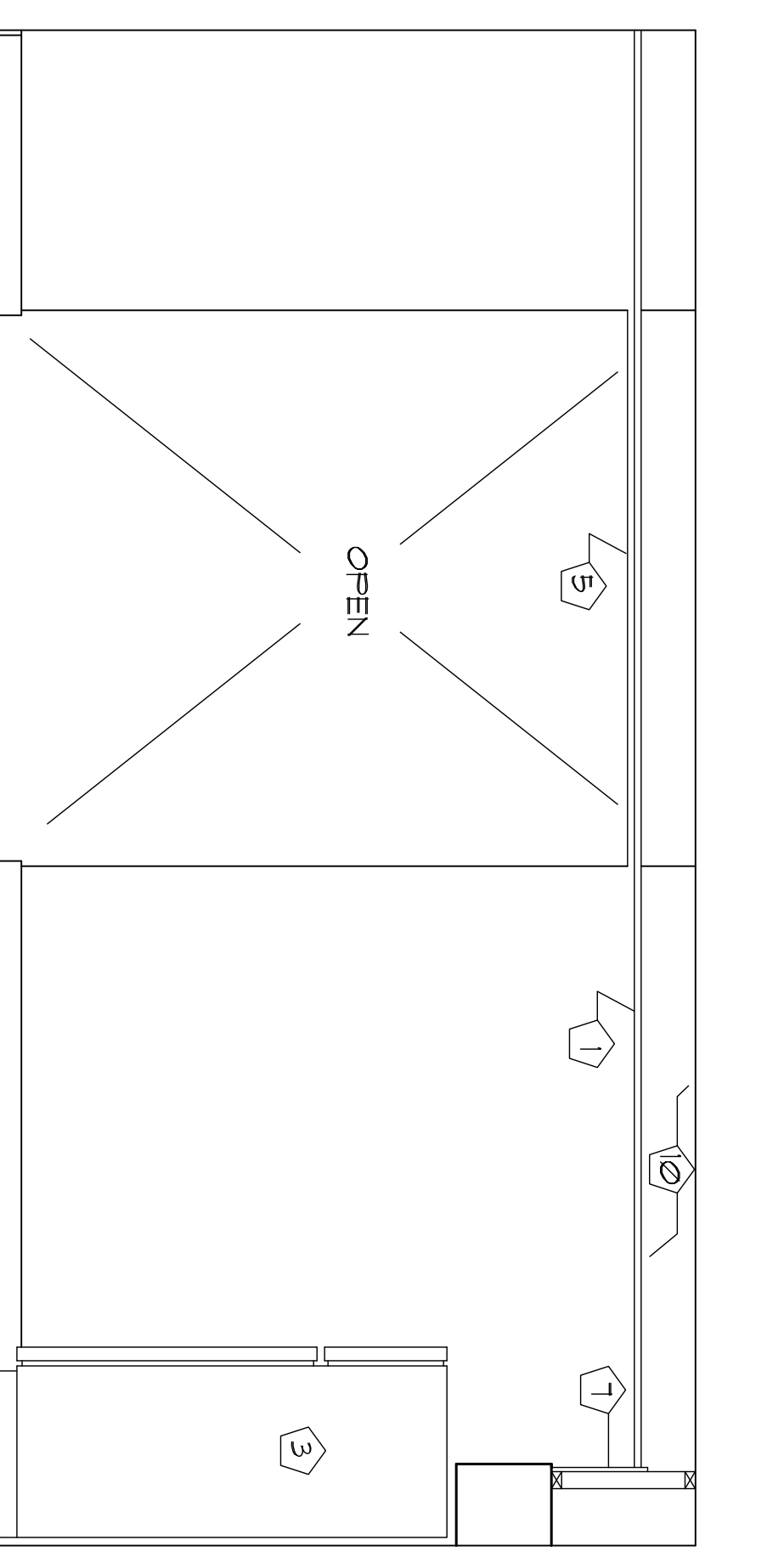
C ELEVATION  
SCALE: 1/2" = 1'-0"



B ELEVATION  
SCALE: 1/2" = 1'-0"



C ELEVATION  
SCALE: 1/2" = 1'-0"



D ELEVATION  
SCALE: 1/2" = 1'-0"