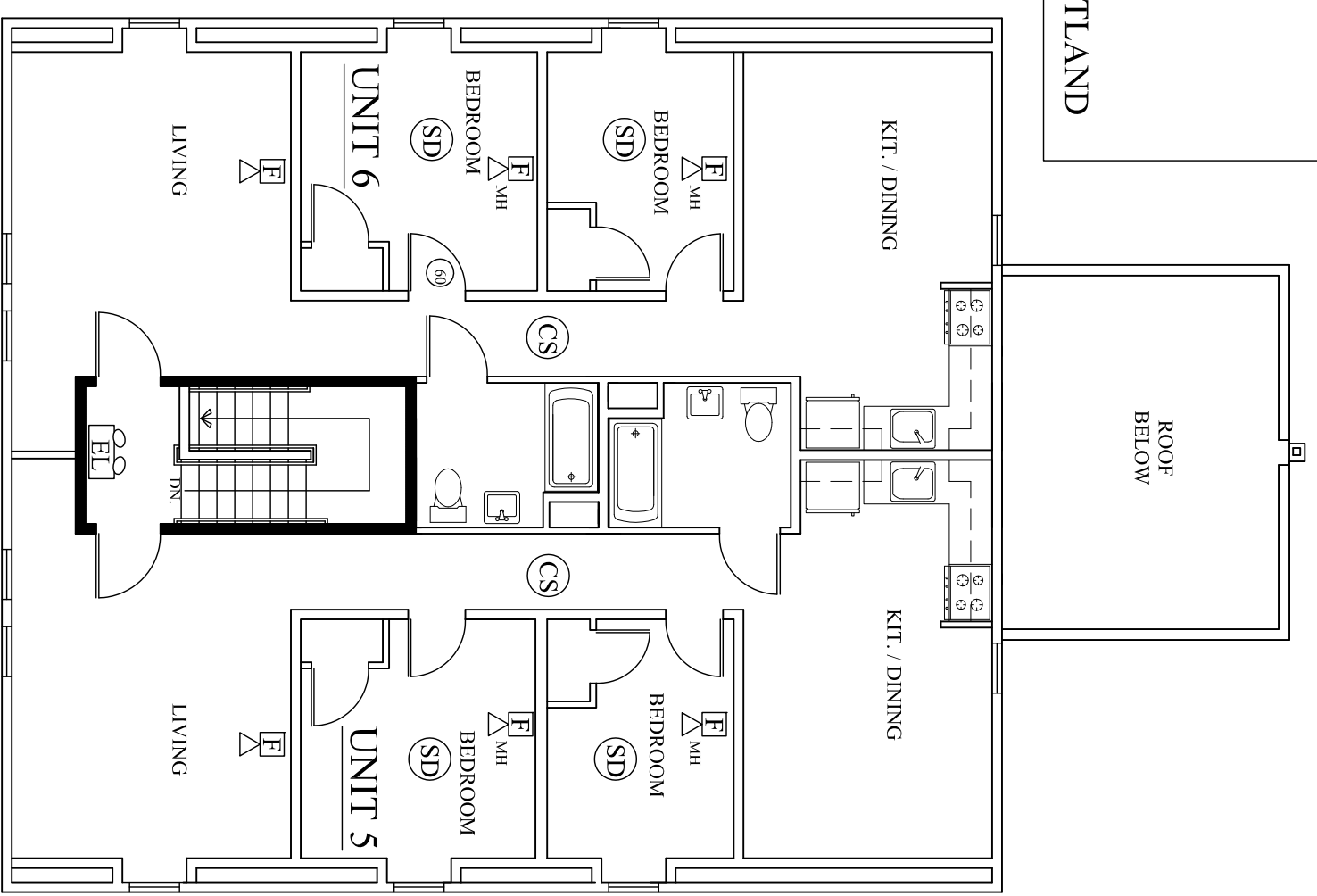
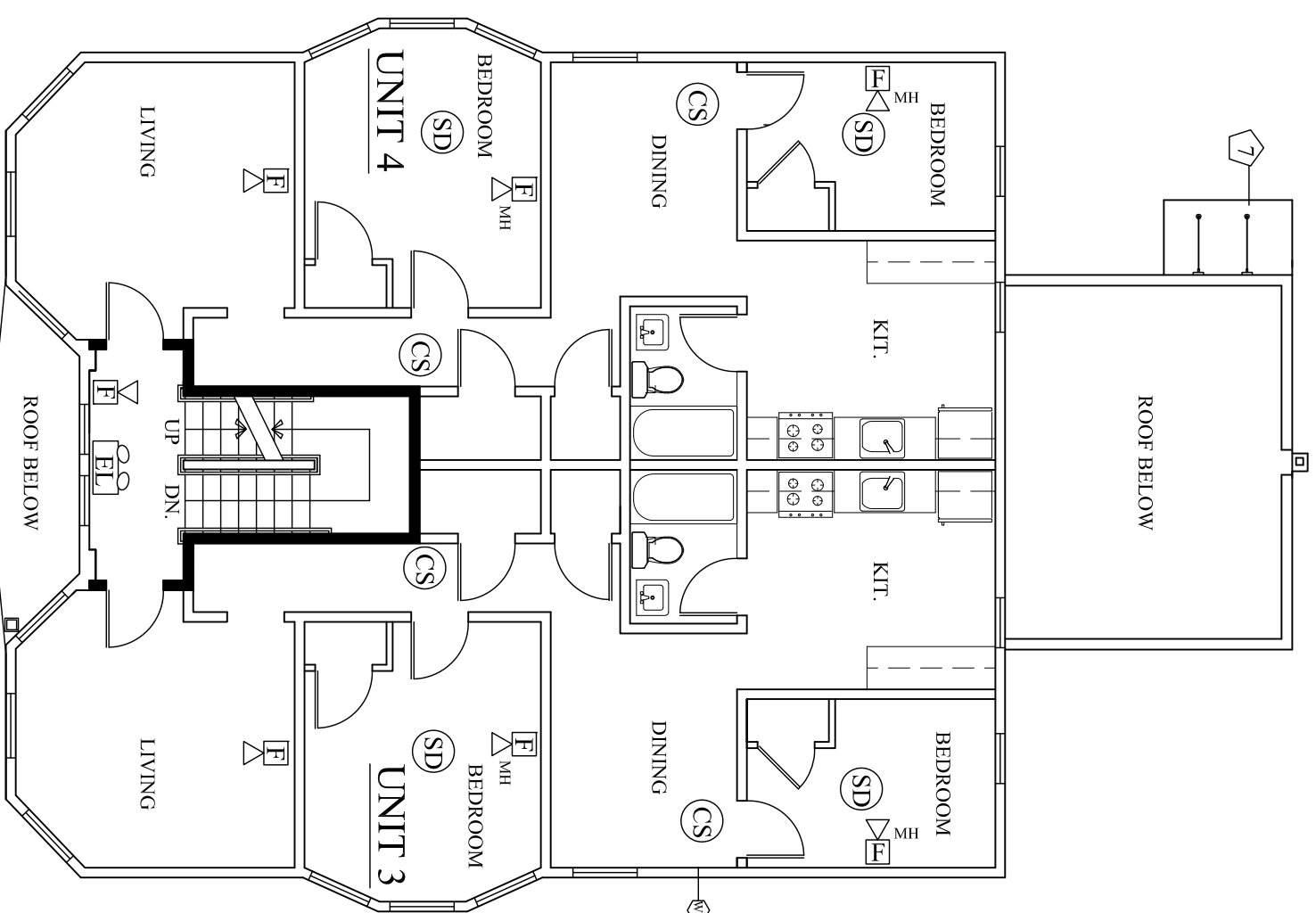


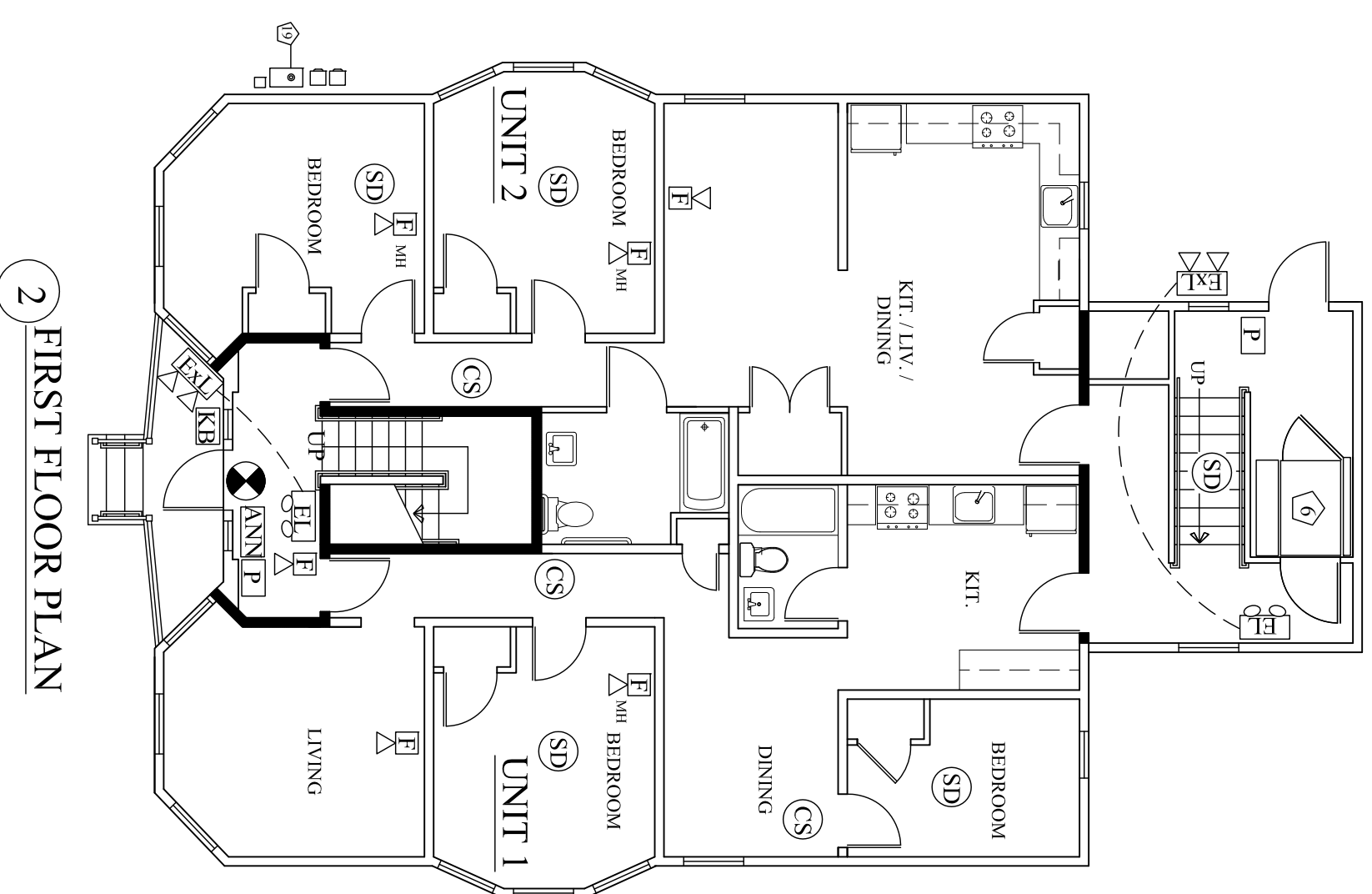
CITY OF PORTLAND



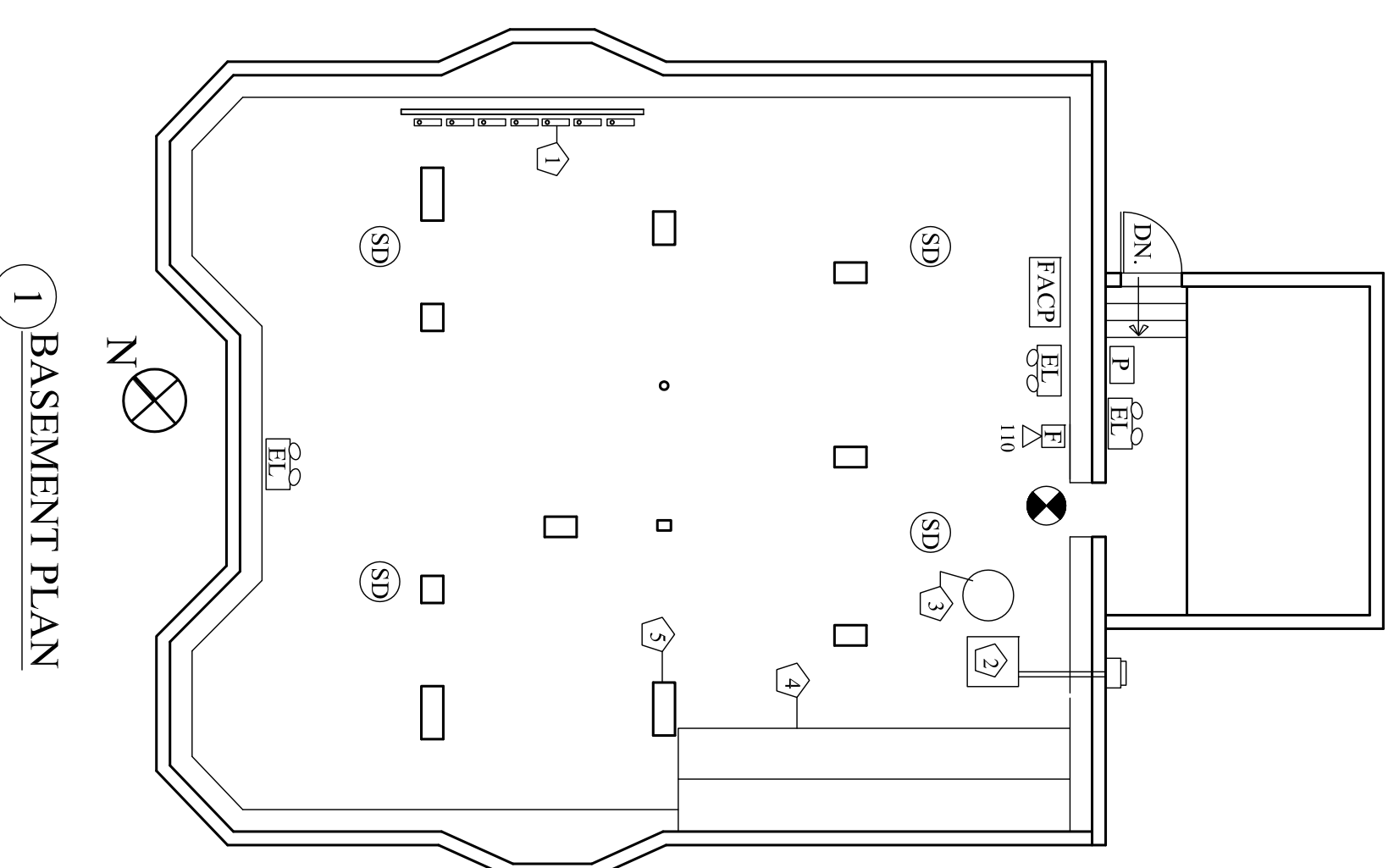
4 THIRD FLOOR PLAN



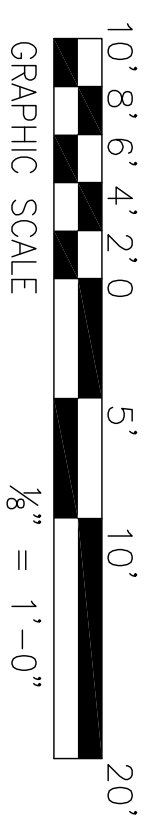
3 SECOND FLOOR PLAN



2 FIRST FLOOR PLAN



1 BASEMENT PLAN



**PROJECT DESCRIPTION**  
 THE PROJECT CONSISTS OF AN ADDITION TO AND RENOVATION OF AN EXISTING, 3 STORY, WOOD FRAMED, SIX UNIT APARTMENT BUILDING. THE BUILDING WILL REMAIN A SIX UNIT APARTMENT BUILDING.

THE ADDITION CONSISTS OF A SINGLE STORY ENCLOSURE PROVIDING ACCESSIBILITY TO THE FIRST FLOOR. THE ADDITION WILL INCLUDE STAIRS AND A MECHANICAL VERTICAL WHEELCHAIR LIFT. THE FOOTPRINT OF THE ADDITION IS 17'-6" X 13'-6" = 236.25 SQ. FT.

**SQUARE FOOTAGES**

BASEMENT	2002 SF
FIRST FLOOR	2056 SF
SECOND FLOOR	1766 SF
THIRD FLOOR	1904 SF
	7728 SF

**LIFE SAFETY**  
 THE BUILDING WILL BE FULLY SPRINKLED PER NFPA 13R AND WILL HAVE A FIRE ALARM SYSTEM.

**CODE ANALYSIS - NFPA 2009**  
 CHAPTER 31 - EXISTING APARTMENT BUILDING.

**MEANS OF ESCAPE -**  
 PRIMARY - INTERIOR STAIR PER 31.2.4.3.

**SMOKE DETECTOR ALARMS -**  
 REQUIRED PER 31.3.4

**AUTOMATIC SPRINKLER SYSTEM -**  
 NFPA 13R PER 31.3.5

**DWELLING UNIT SEPARATION - 1/2**  
 HOUR PER 31.2.4.3

**CORRIDOR WALLS - 1/2 HOUR PER**  
 31.2.4.3

**UNIT ENTRY DOORS - 60 MIN. RATED**  
 PER 31.2.4.3

**LEGEND**

- (1) HOUR RATED CONSTRUCTION WITH 60 MINUTE RATED DOORS.
- FIRE ALARM CONTROL PANEL
- FIRE ALARM ANNUNCIATOR PANEL
- KNOX BOX - VERIFY LOCATION W/LOCAL FIRE CHIEF PRIOR TO ROUGH-IN.
- FIRE ALARM PULL STATION, MOUNT AT 48" AFF.
- SELF CONTAINED EMERGENCY LIGHT W/2 HEADS DUAL-LITE (LED) MODEL LZ651-09L, 65 WATTS FOR 90 MINUTES, COLOR BY ARCHITECT.
- EXTERIOR REMOTE HEAD DUAL-LITE (LED) NO. OGRD 1208L, COLOR BY ARCHITECT.
- FIRE ALARM AUDIO / VISUAL, MOUNT 6-8" AFF. NUMBER DENOTES CANDELA RATING, "MH" DENOTES MINI-HORN, "CL" DENOTES CEILING MOUNTED, NO DESIGNATION EQUALS 15db.
- EXIT LIGHT FIXTURE, UNSWITCHED, DUAL-LITE LX-U-R-W-E OR APPROVED EQUAL.
- SYSTEM CONNECTED SMOKE / CARBON MONOXIDE DETECTOR, PHOTOELECTRIC TYPE.
- SMOKE DETECTOR, PHOTOELECTRIC TYPE, SYSTEM CONNECTED.

**KEYED NOTES**

- ELECTRICAL PANELS.
- GAS BOILER.
- WATER HEATER.
- CONCRETE WALL REINFORCEMENT BUTTRESS.
- STRUCTURAL COLUMN (TYP.).
- MECHANICAL VERTICAL WHEELCHAIR LIFT.
- SUSPENDED ENTRY CANOPY.

Architect

**SHIELDS ARCHITECTURE**

2Cumberland, Maine  
 (207) 776-8926



Date  
 7/11/14

Scale  
 1/8" = 1'-0"

Project:  
**ADDITION & RENOVATIONS**

214 DANFORTH STREET  
 PORTLAND, MAINE

Drawing

**LIFE SAFETY PLANS**

**A-11**