

DOOR SCHEDULE

No.	SIZE	Thick	DOOR		FRAME		LABEL	HD/WRE	REMARKS	No.	
			Type	Material	Finish	Material					Finish
FIRST FLOOR											
1	3'-0" X 6'-8"	1 3/8"	A	Mtl.	Ptd.	Wood	Ptd.	...	Entrance	Vest. 101 to Porch 100 - insulated, weather-stripped. Existing door to remain.	1
2	NOT USED										2
3	3'-0" X 6'-8"	1 3/4"	A	SC Molded	Ptd.	Mtl.	Ptd.	60 Min.	Entrance	Vest. 101 to Corridor 105. See Note A.	3
4	NOT USED										4
5	2'-8" X 6'-8"	1 3/8"	A	SC Molded	Ptd.	Wood	Ptd.	...	Privacy	Corridor 105 to Bedroom 106. See Note 4.	5
6	NOT USED										6
7	2'-6" X 6'-8"	1 3/8"	A	HC Molded	Ptd.	Wood	Ptd.	...	Passage	Closet 104 to Bedroom 106.	7
8	1'-6" X 6'-8"	1 3/8"	A	HC Molded	Ptd.	Wood	Ptd.	...	Passage	Linen Closet 107 to Corridor 105.	8
9	2'-8" X 6'-8"	1 3/8"	A	SC Molded	Ptd.	Wood	Ptd.	...	Privacy	Kit. 109 to Bath 115. See Note 4.	9
10	2'-8" X 6'-8"	1 3/8"	A	HC Molded	Ptd.	Wood	Ptd.	...	Privacy	Dining 108 to Bedroom 105. See Note 4.	10
11	3'-0" X 6'-8"	1 3/4"	A	SC Molded	Ptd.	Mtl.	Ptd.	60 Min.	Entrance	Corridor 111 to Kitchen 109.	11
12	3'-0" X 3'-6"	Upper Level Wheelchair Lift Metal Gate	12
13	3'-0" X 3'-6"	Lower Level Wheelchair Lift Metal Gate	13
14	3'-0" X 6'-8"	1 3/8"	A	Metal	Ptd.	Wood	Ptd.	...	Entrance	Vest. 112 to Exterior - insulated, weather-stripped.	14
15	3'-0" X 6'-8"	1 3/8"	B	Metal	Ptd.	Wood	Ptd.	...	Storage	Base. Entry 002 to Ext. - insulated, weather-strippe.	15
16	3'-0" X 6'-8"	1 3/4"	A	SC Molded	Ptd.	Mtl.	Ptd.	60 Min.	Entrance	Corridor 111 to Kitchen 114.	16
17	2'-6" X 6'-8"	1 3/8"	A	HC Molded	Ptd.	Wood	Ptd.	...	Passage	Closet 113 to Kitchen 114.	17
18	(2) 2'-0" X 6'-8"	1 3/8"	A	HC Molded	Ptd.	Wood	Ptd.	...	Passage	Closet 117 to Kitchen 114.	18
19	2'-6" X 6'-8"	1 3/8"	A	HC Molded	Ptd.	Wood	Ptd.	...	Passage	Closet 103 to Bedroom 105.	19
20	2'-10" X 6'-8"	1 3/8"	A	SC Molded	Ptd.	Wood	Ptd.	...	Privacy	Corridor 119 from Bath 118.	20
21	2'-10" X 6'-8"	1 3/8"	A	SC Molded	Ptd.	Wood	Ptd.	...	Privacy	Corridor 119 to Bedroom 120.	21
22	2'-6" X 6'-8"	1 3/8"	A	HC Molded	Ptd.	Wood	Ptd.	...	Passage	Corridor 121 to Bedroom 120.	22
23	2'-10" X 6'-8"	1 3/8"	A	SC Molded	Ptd.	Wood	Ptd.	...	Privacy	Corridor 119 to Bedroom 122.	23
23a	2'-6" X 6'-8"	1 3/8"	A	HC Molded	Ptd.	Wood	Ptd.	...	Passage	Closet 116 to Bedroom 122.	23a
24	3'-0" X 6'-8"	1 3/4"	A	SC Molded	Ptd.	Mtl.	Ptd.	60 Min.	Entrance	Vestibule 101 to Corridor 119. See Note A.	24
SECOND FLOOR											
25	3'-0" X 6'-8"	1 3/4"	A	SC Molded	Ptd.	Mtl.	Ptd.	60 Min.	Entrance	Corr. 200 to Corr. 201. See Note A.	25
26	NOT USED										26
27	2'-6" X 6'-8"	1 3/8"	A	HC Molded	Ptd.	Wood	Ptd.	...	Passage	Closet 202 to Bedroom 203.	27
28	2'-8" X 6'-8"	1 3/8"	A	SC Molded	Ptd.	Wood	Ptd.	...	Privacy	Corr. 201 to Bedroom 203. See Note 4.	28
29	2'-6" X 6'-8"	1 3/8"	A	HC Molded	Ptd.	Wood	Ptd.	...	Passage	Closet 207 to Bedroom 206. See Note 4.	29
30	2'-8" X 6'-8"	1 3/8"	A	HC Molded	Ptd.	Wood	Ptd.	...	Passage	Closet 204 to Corr. 201. See Note 4.	30
31	2'-8" X 6'-8"	1 3/8"	A	HC Molded	Ptd.	Wood	Ptd.	...	Passage	Closet 205 to Corr. 201. See Note 4.	31
32	NOT USED										32
33	2'-8" X 6'-8"	1 3/8"	A	SC Molded	Ptd.	Wood	Ptd.	...	Privacy	Kit. 209 to Bath 208. See Note 4.	33
34	2'-8" X 6'-8"	1 3/8"	A	SC Molded	Ptd.	Wood	Ptd.	...	Passage	Dining 214 to Bedroom 206. See Note 4.	34
35	2'-8" X 6'-8"	1 3/8"	A	HC Molded	Ptd.	Wood	Ptd.	...	Passage	Closet 211 to Dining 215. See Note 4.	35
36	2'-8" X 6'-8"	1 3/8"	A	SC Molded	Ptd.	Wood	Ptd.	...	Privacy	Dining 214 to Bedroom 221. See Note 4.	36
37	2'-6" X 6'-8"	1 3/8"	A	HC Molded	Ptd.	Wood	Ptd.	...	Passage	Closet 213 to Bedroom 221.	37
38	2'-8" X 6'-8"	1 3/8"	A	SC Molded	Ptd.	Wood	Ptd.	...	Privacy	Kit. 212 to Bath 216. See Note 4.	38
39	2'-8" X 6'-8"	1 3/8"	A	HC Molded	Ptd.	Wood	Ptd.	...	Passage	Closet 210 to Corr. 219. See Note 4.	39
40	2'-8" X 6'-8"	1 3/8"	A	SC Molded	Ptd.	Wood	Ptd.	...	Privacy	Corr. 219 to Bedroom 217. See Note 4.	40
41	2'-6" X 6'-8"	1 3/8"	A	HC Molded	Ptd.	Wood	Ptd.	...	Passage	Closet 218 to Bedroom 217.	41
42	NOT USED										42
43	3'-0" X 6'-8"	1 3/4"	A	SC Molded	Ptd.	Mtl.	Ptd.	60 Min.	Entrance	Corr. 200 to Living 220. See Note A.	43
THIRD FLOOR											
44	3'-0" X 6'-8"	1 3/4"	A	SC Molded	Ptd.	Mtl.	Ptd.	60 Min.	Entrance	Corr. 300 to Living 318. See Note A.	44
45	3'-0" X 6'-8"	1 3/4"	A	SC Molded	Ptd.	Mtl.	Ptd.	60 Min.	Entrance	Corr. 300 to Living 320. See Note A.	45
46	NOT USED										46
47	2'-6" X 6'-8"	1 3/8"	A	HC Molded	Ptd.	Wood	Ptd.	...	Passage	Closet 302 to Bedroom 303.	47
48	2'-8" X 6'-8"	1 3/8"	A	SC Molded	Ptd.	Wood	Ptd.	...	Privacy	Corr. 301 to Bedroom 303. See Note 4.	48
49	2'-6" X 6'-8"	1 3/8"	A	HC Molded	Ptd.	Wood	Ptd.	...	Passage	Closet 304 to Bedroom 306.	49
50	NOT USED										50
51	NOT USED										51
52	NOT USED										52
53	2'-10" X 6'-8"	1 3/8"	A	SC Molded	Ptd.	Wood	Ptd.	...	Privacy	Corr. 301 to Bedroom 306.	53
54	2'-10" X 6'-8"	1 3/8"	A	SC Molded	Ptd.	Wood	Ptd.	...	Privacy	Corr. 301 from Bath 309.	54

DOOR SCHEDULE

No.	SIZE	Thick	DOOR		FRAME		LABEL	HD/WRE	REMARKS	No.	
			Type	Material	Finish	Material					Finish
THIRD FLOOR (CONT.)											
55	2'-10" X 6'-8"	1 3/8"	A	SC Molded	Ptd.	Wood	Ptd.	...	Privacy	Corr. 318 to Bedroom 313.	55
56	NOT USED										56
57	NOT USED										57
58	2'-10" X 6'-8"	1 3/8"	A	SC Molded	Ptd.	Wood	Ptd.	...	Privacy	Corr. 318 from Bath 314.	58
59	2'-6" X 6'-8"	1 3/8"	A	HC Molded	Ptd.	Wood	Ptd.	...	Passage	Closet 315 to Bedroom 313.	59
60	2'-8" X 6'-8"	1 3/8"	A	SC Molded	Ptd.	Wood	Ptd.	...	Privacy	Corr. 318 to Bedroom 316. See Note 4.	60
61	2'-6" X 6'-8"	1 3/8"	A	HC Molded	Ptd.	Wood	Ptd.	...	Passage	Closet 317 to Bedroom 316.	61
62	2'-0" X 3'-0"	Attic Access Door - 1 Hour Fire Rated, Lockable	62

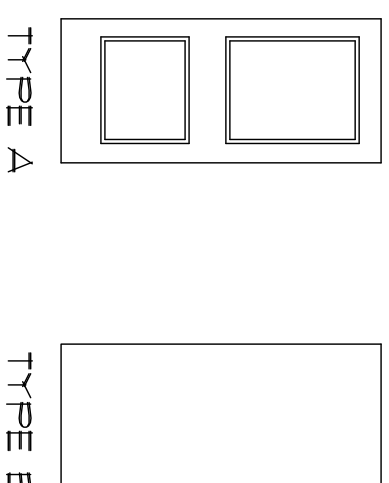
GENERAL DOOR NOTES:

- ALL HARDWARE TO INCLUDE LEVER HANDLES.
- ALL RATED DOORS TO BE SELF CLOSING.
- SEE SECTION 08200 FOR ADD'L INFO.
- DOOR SLAB ONLY - EXISTING JAMB & TRIM TO REMAIN.

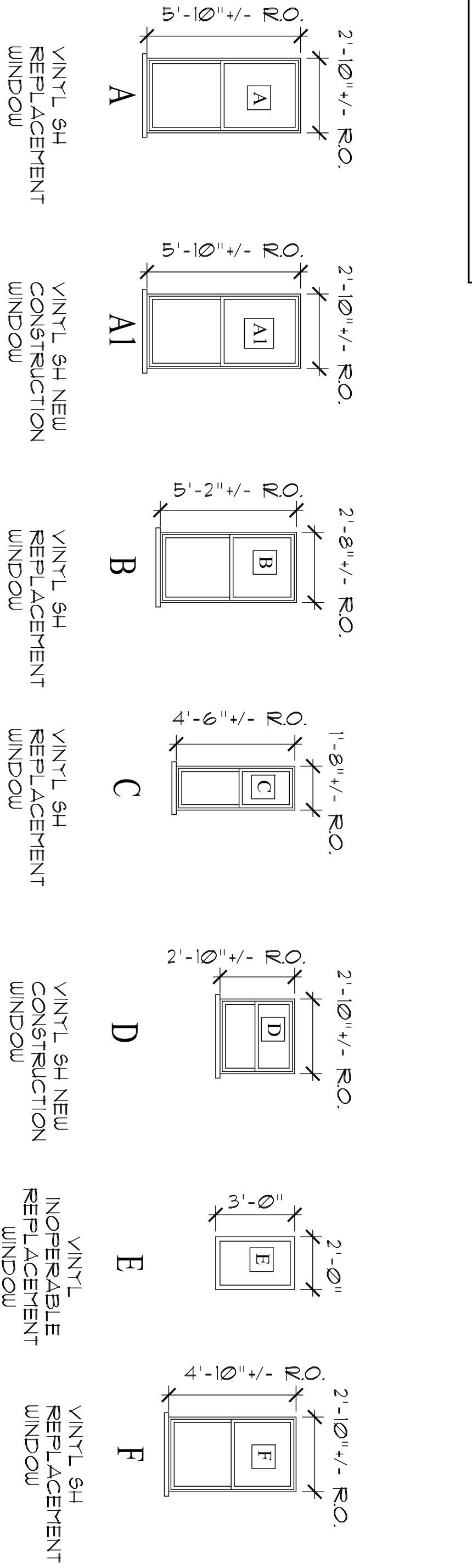
DOOR NOTES

A. REFRAME EXISTING DOOR ROUGH OPENING TO ACCOMMODATE SCHEDULED DOOR.

DOOR TYPES



WINDOW TYPES



WINDOW NOTES:

- FIELD VERIFY EXISTING WINDOW ROUGH OPENINGS AFTER REMOVAL OF EXISTING WINDOWS. COORDINATE NEW WINDOWS WITH EXISTING ROUGH OPENINGS.
- UNRAP EXTERIOR WINDOW TRIM/SILL WITH ALUMI. COIL STOCK - COLOR BY ARCHITECT.
- AT WINDOW D LOCATIONS REFRAME EXISTING WINDOW RO. TO MEET THE REQUIREMENTS OF WINDOW D.
- PROVIDE TEMPERED GLASS FOR WINDOW TYPE C.
- PROVIDE LAMINATED SAFETY GLASS FOR WINDOW TYPE E.