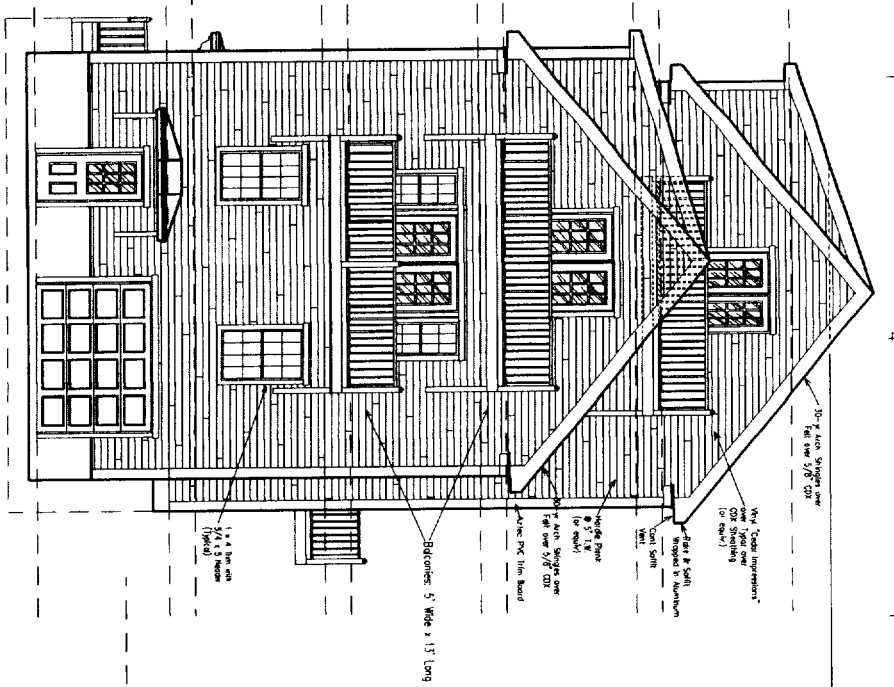
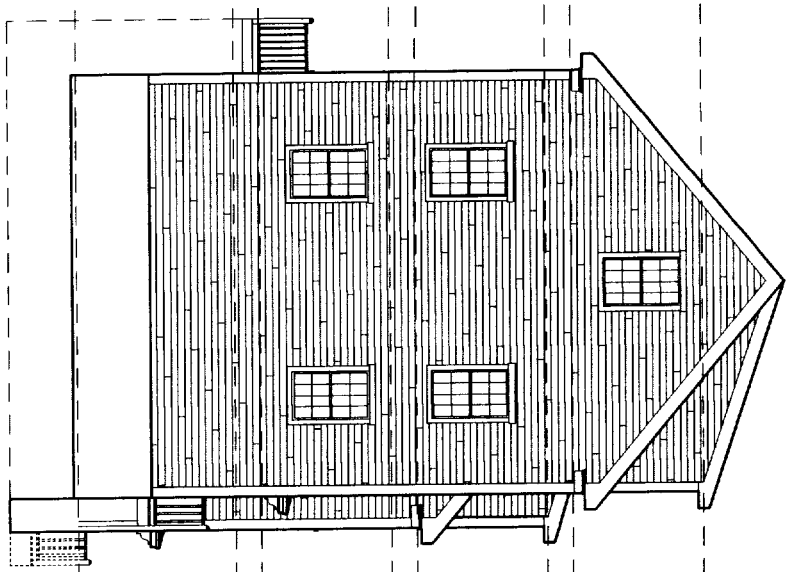


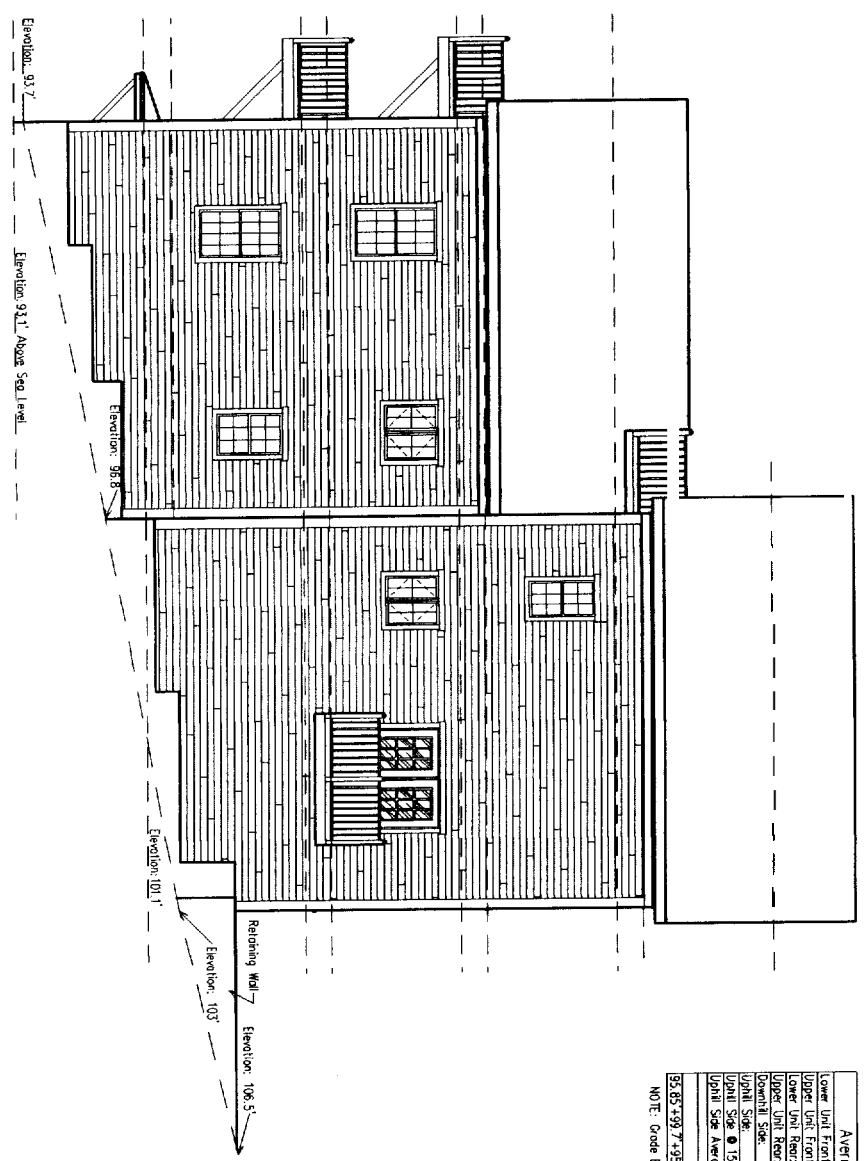
Front Elevation



Right Elevation



Left Elevation

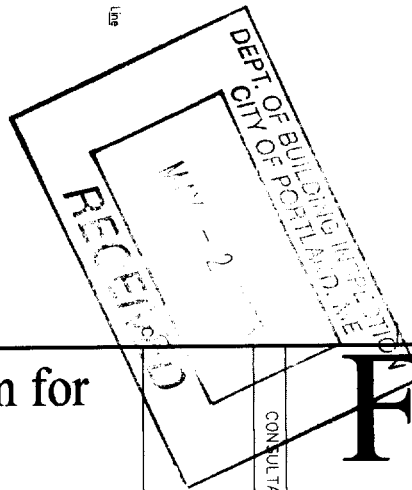


Rear Elevation

Average Grade Calculation

Lower End Front:	93.7'±0.0'	7.2 = 95.85'
Upper End Front:	98.2'±0.1'	7.2 = 98.7'
Lower End Rear:	93.7'±0.6'	7.2 = 95.25'
Upper End Rear:	96.8'±0.3'	7.2 = 99.9'
Overall Side:	93.7'±0.3'	7.2 = 93.7'
Overall Side:	101.4'±0.3'	7.2 = 102.2'
Overall Side:	96.9'±0.5'	7.2 = 106.7'
Overall Side Average:	102.2'±0.6'	7.2 = 104.5'

NOTE: Grade Elevations from Site Plan Provided



26x48 Duplex Condominium for Steve Sanders
 1-3 Orange Street
 Portland, Maine

FromMus
 PO Box 11
 Sabattus, Maine 04280
 207-375-4800

DO NOT SCALE PRINTS
 These documents were prepared by an architectural draftsman; they have not been reviewed by an architect or engineer. Neither FromMus nor the draftsman assumes any responsibility for design or engineering. Dimensions, code compliance and specifications should be reviewed by the purchaser and builder prior to construction. Damages shall be limited to the cost of the plans.

ISSUE DATE	05/10/04
REVISION	6/4/04: Revises to Design Proposals & Standards 8/29/04: 2nd Revision to Design Proposals & Standards 10/4/04: 3rd Revision to Design Proposals & Standards 3/6/05: Revises Overall Elevations to New Site Plan
CAD DWG FILE:	CN2448A1c
DRAWN BY:	JCT
CHECKED BY:	JCT
SHEET TITLE	Elevations
A-1	
SHEET 1 of 7	