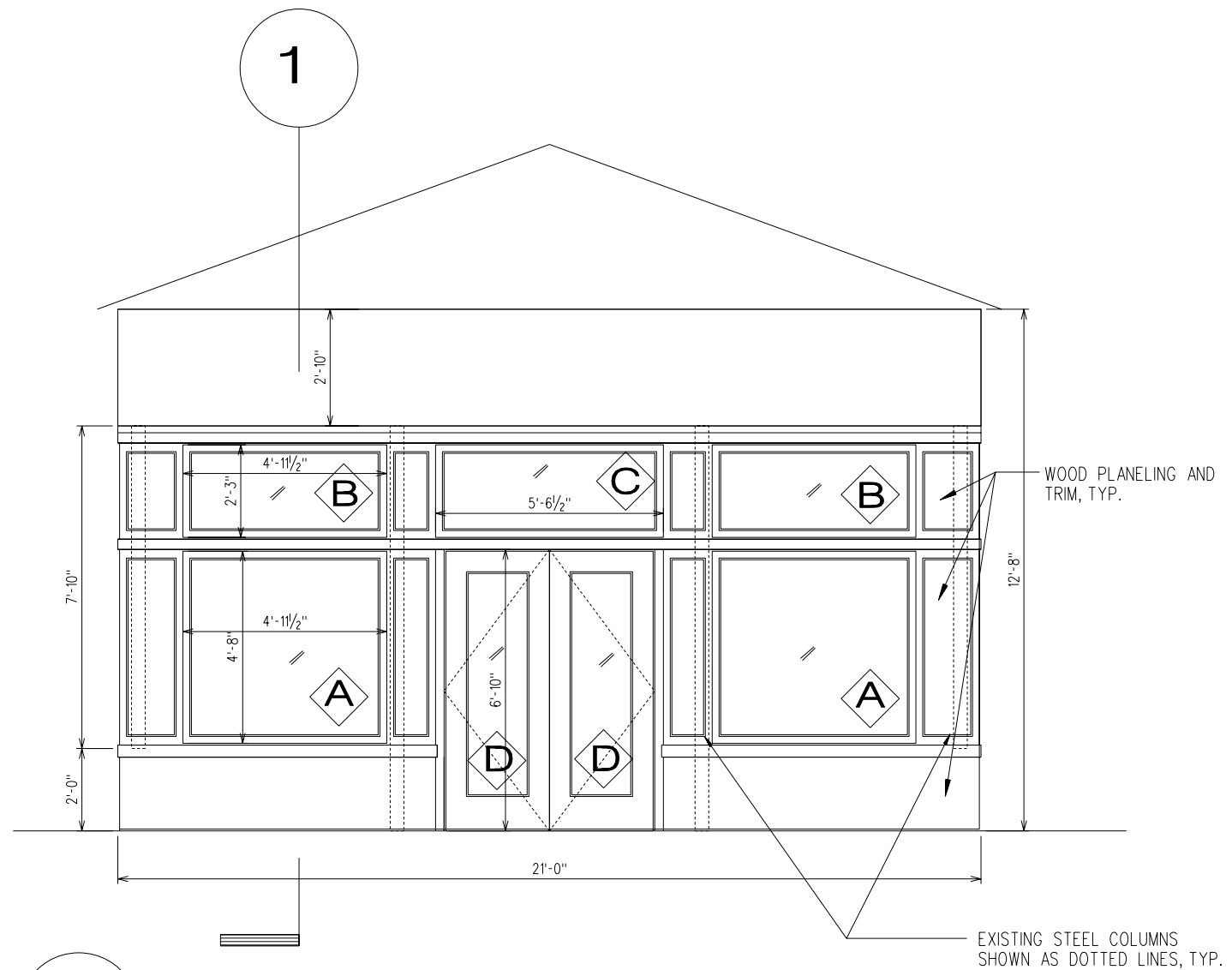


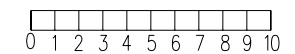
1 PROPOSED FACADE SECTION
SCALE: 1/4" = 1'-0"



2 PROPOSED FACADE
SCALE: 1/4" = 1'-0"

SCHEDULE

A	ANDERSON SERIES 100, TEMPERED GLASS, LOW-E INSULATED, FIXED, RO AS SHOWN
B	ANDERSON SERIES 100, TEMPERED GLASS, LOW-E INSULATED, FIXED, RO AS SHOWN
C	ANDERSON SERIES 100, TEMPERED GLASS, LOW-E INSULATED, FIXED, RO AS SHOWN
D	VINTAGE DOORS BY OWNER, TO BE REFURBISHED AND FIT WITH WEATHER GASKETING AND ENTRYDOOR HARDWARE



DATE: 09-08-17	ISSUED TO: LP	CHRISTOPHER CAMPBELL ARCHITECTURE	246 DANFORTH ST PORTLAND ME	SCALE:
				PROJ. NO.
		PO BOX 7004 PORTLAND, MAINE 04112 CELL: 207-329-8344	FACADE IMPROVEMENT PROJECT BUILDING SECTION & ELEVATIONS	DRAWING NO. A-4