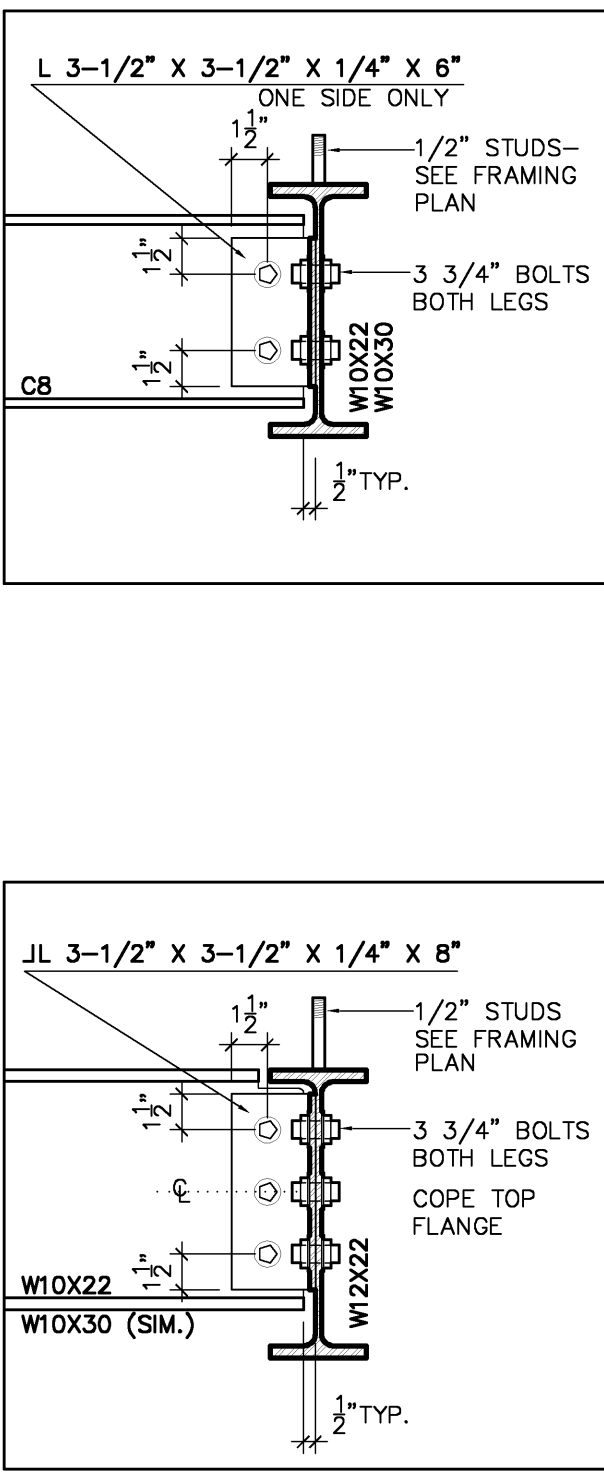
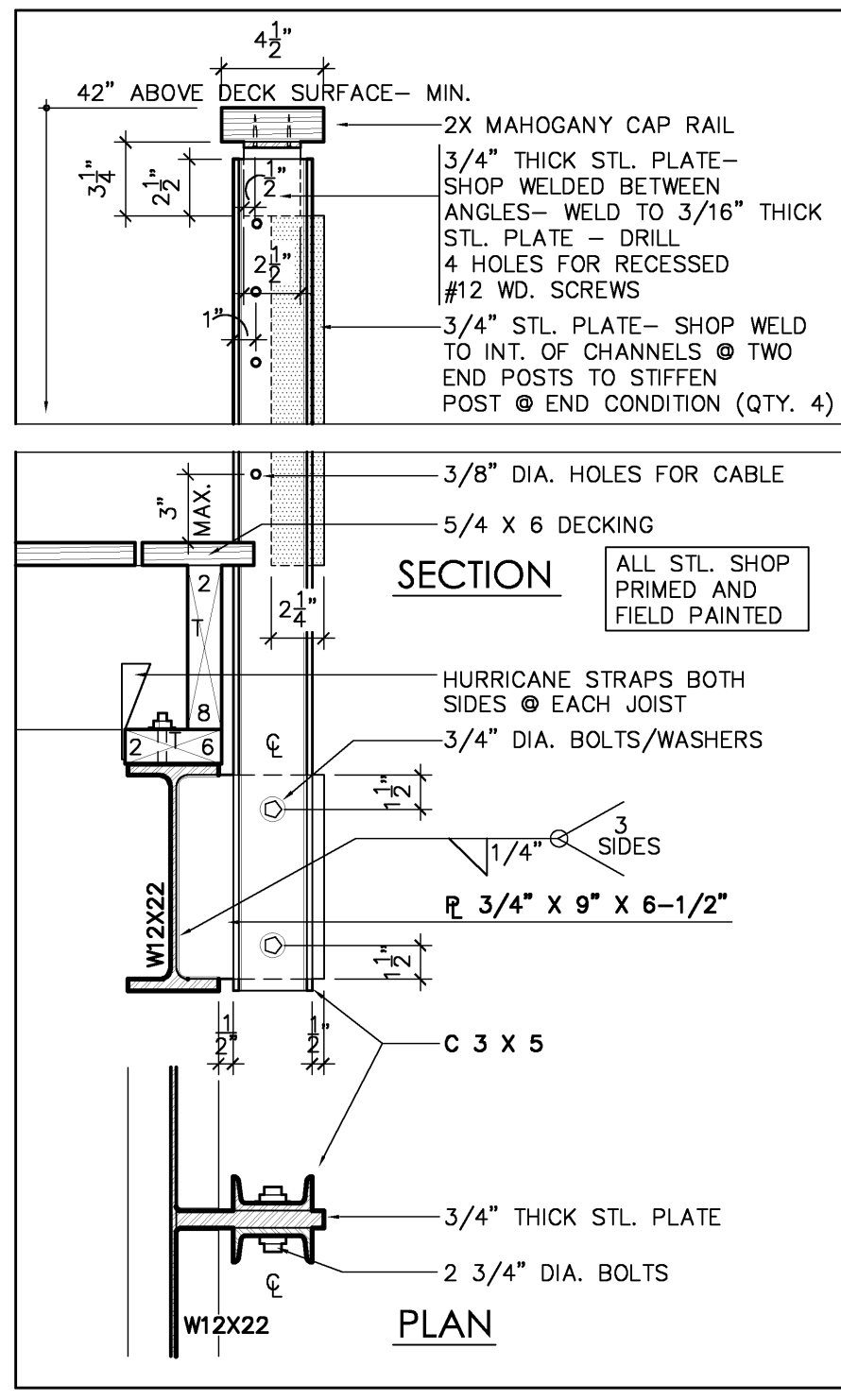


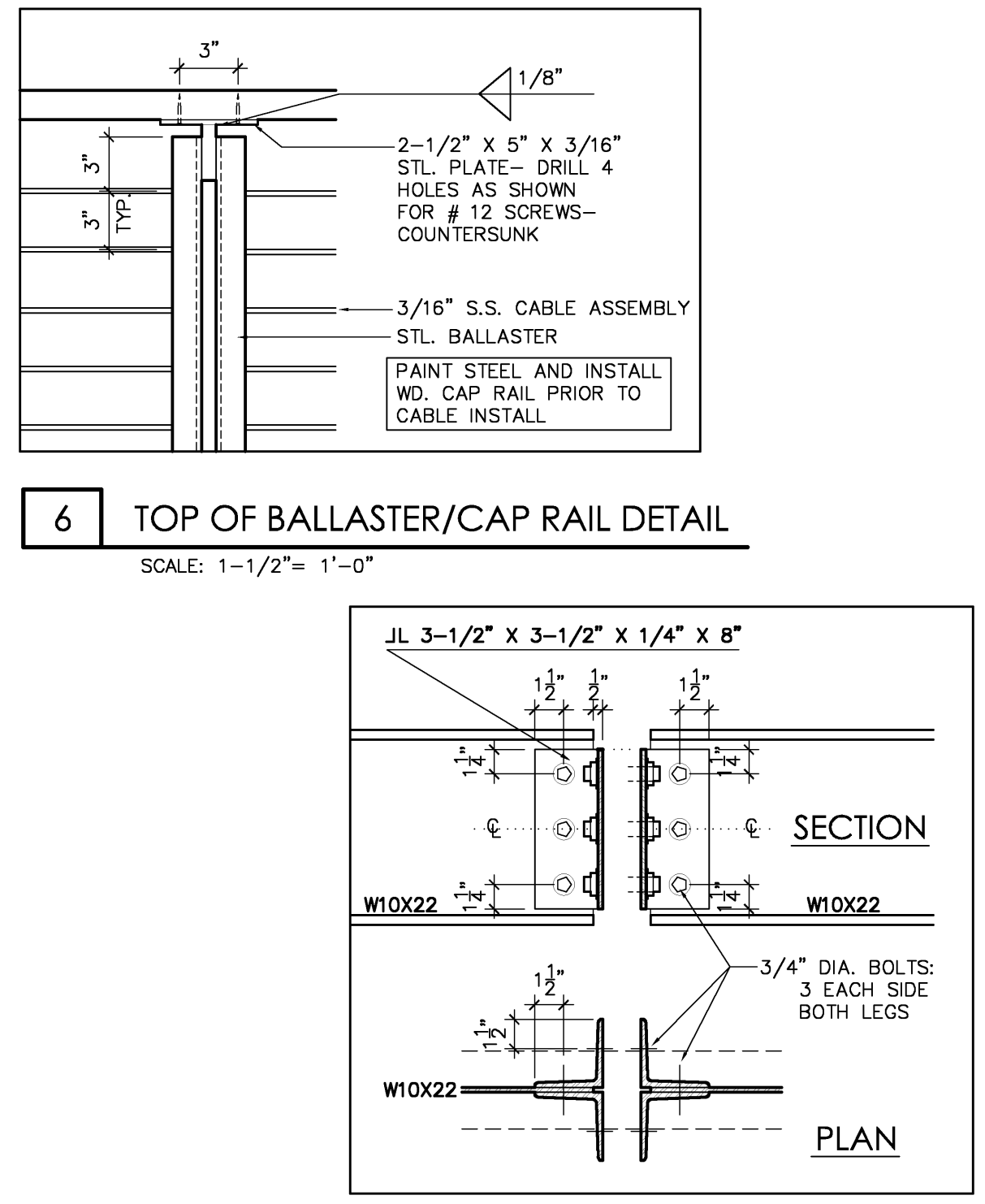
3 BEAM DETAIL @ STAIR BRG. WALL
SCALE: 1-1/2" = 1'-0"



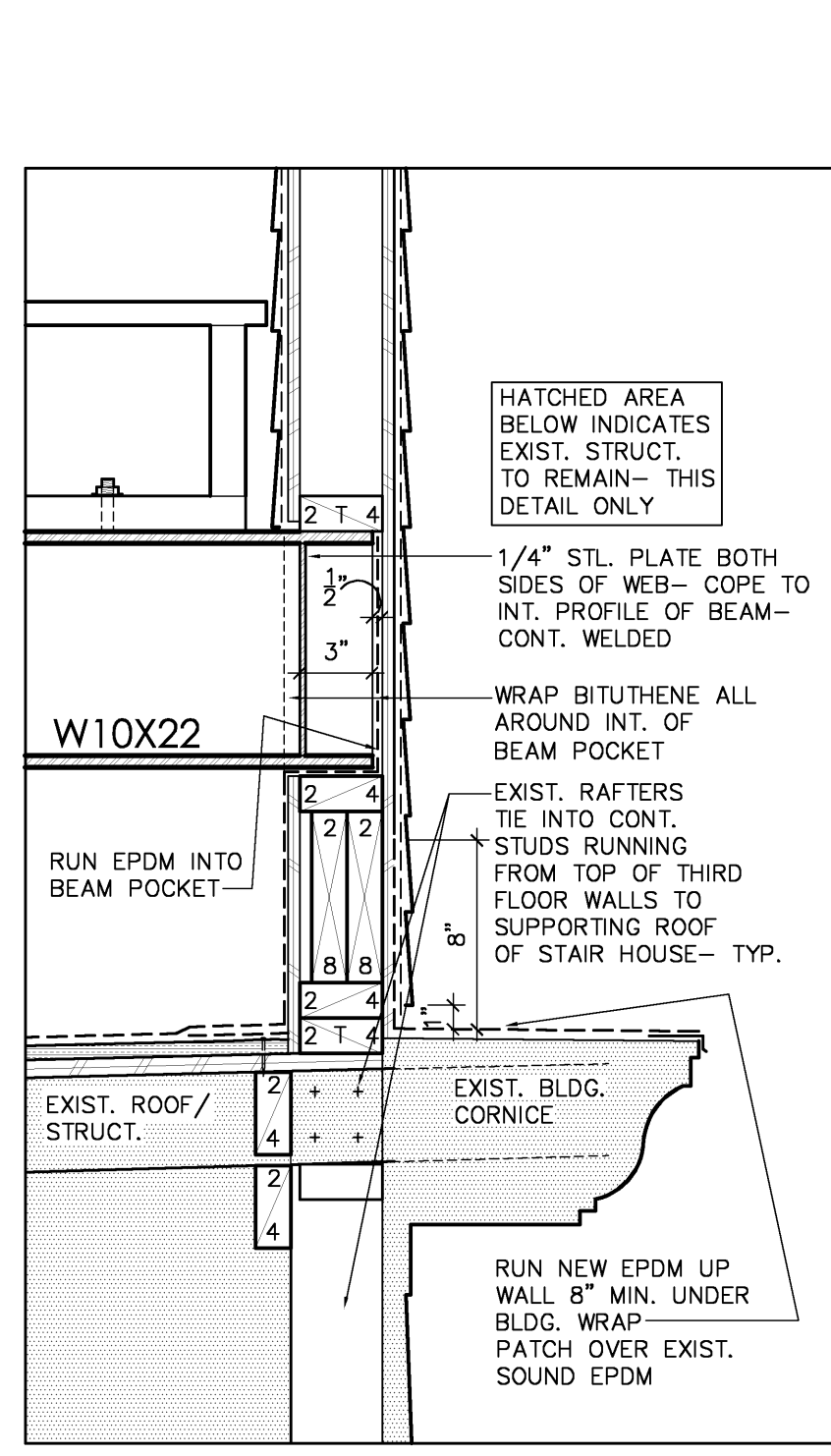
4 STEEL CONN. DETAILS
SCALE: 1-1/2" = 1'-0"



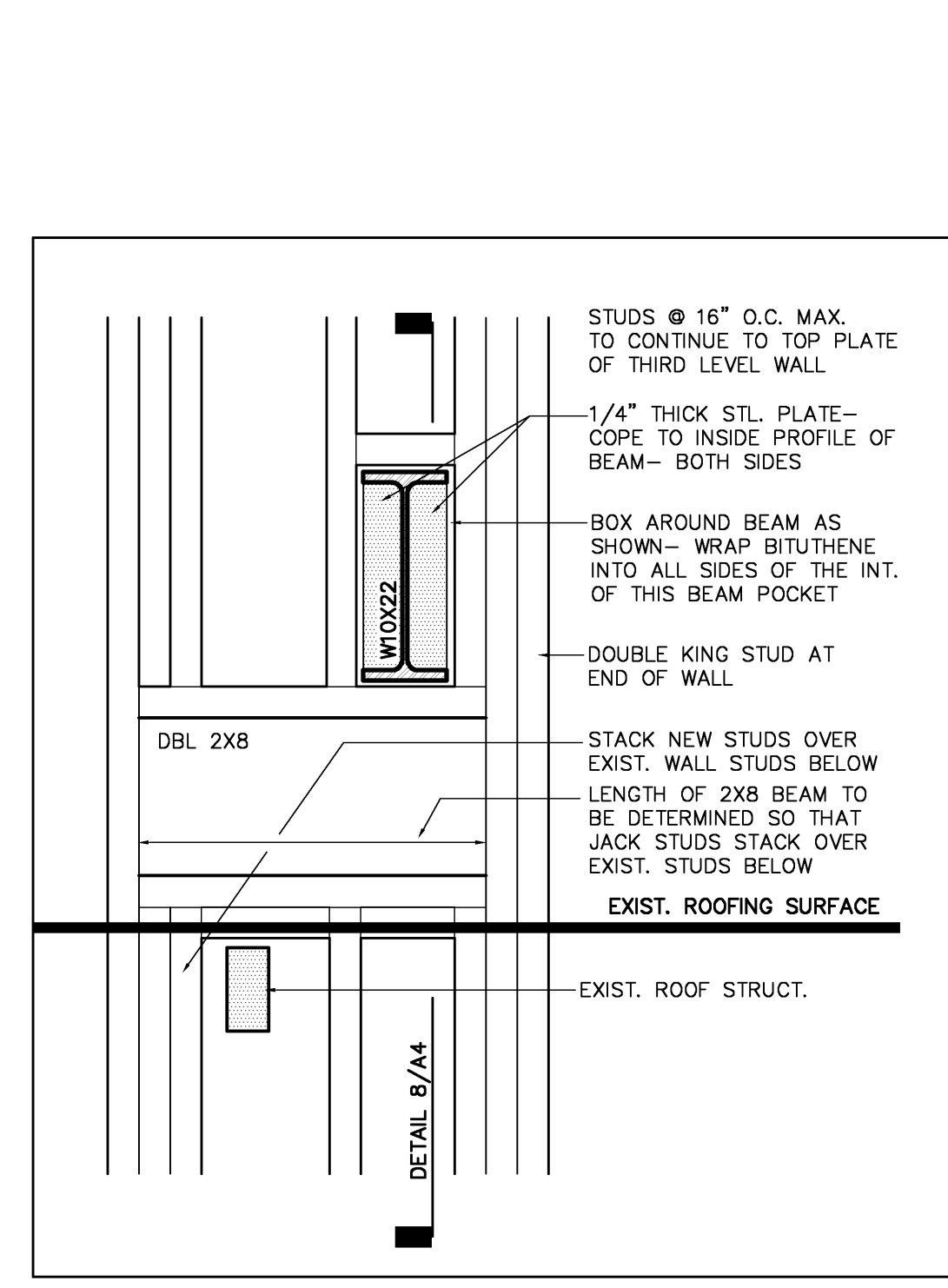
5 BALLASTER/RAIL DETAILS
SCALE: 1-1/2" = 1'-0"



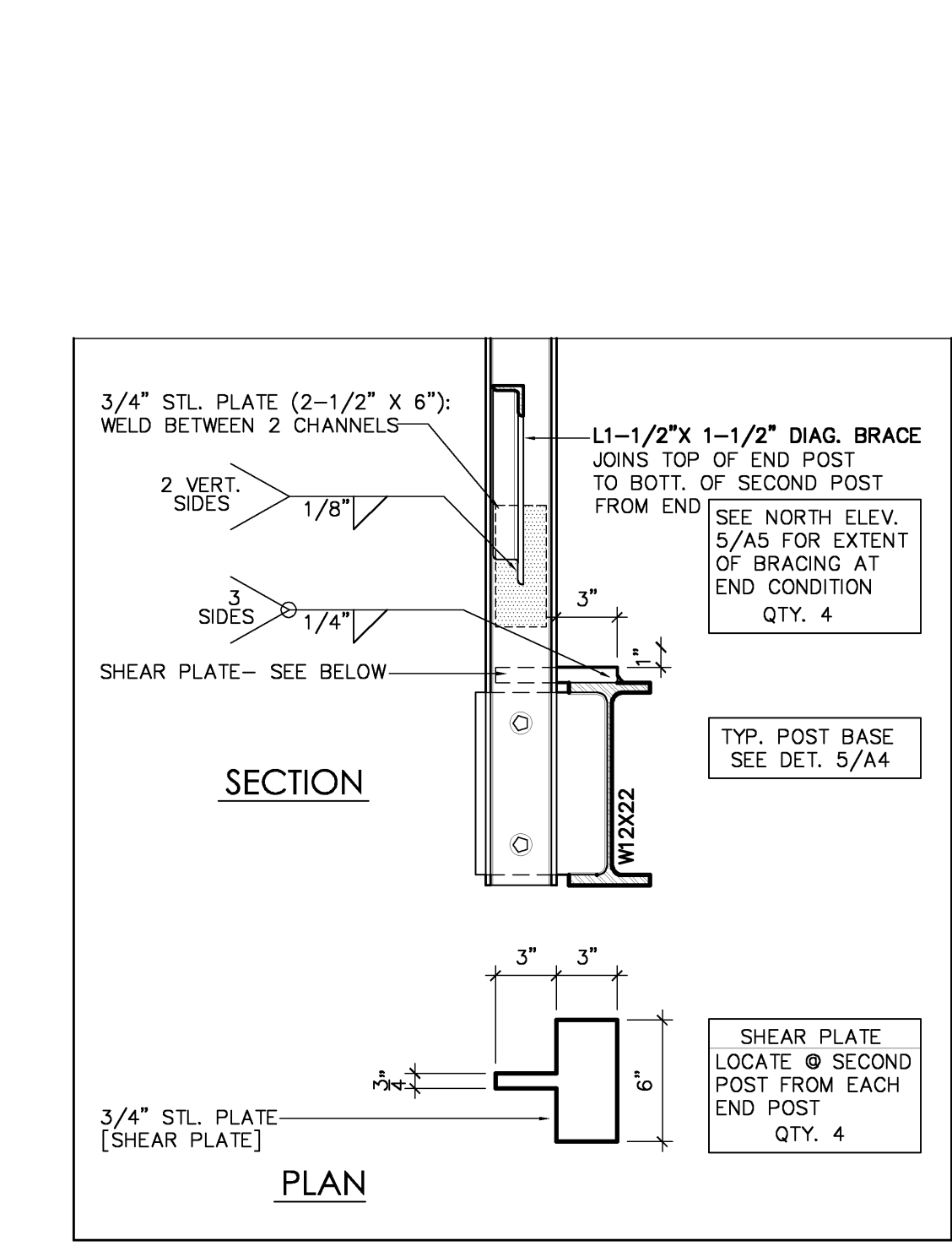
6 TOP OF BALLASTER/CAP RAIL DETAIL
SCALE: 1-1/2" = 1'-0"



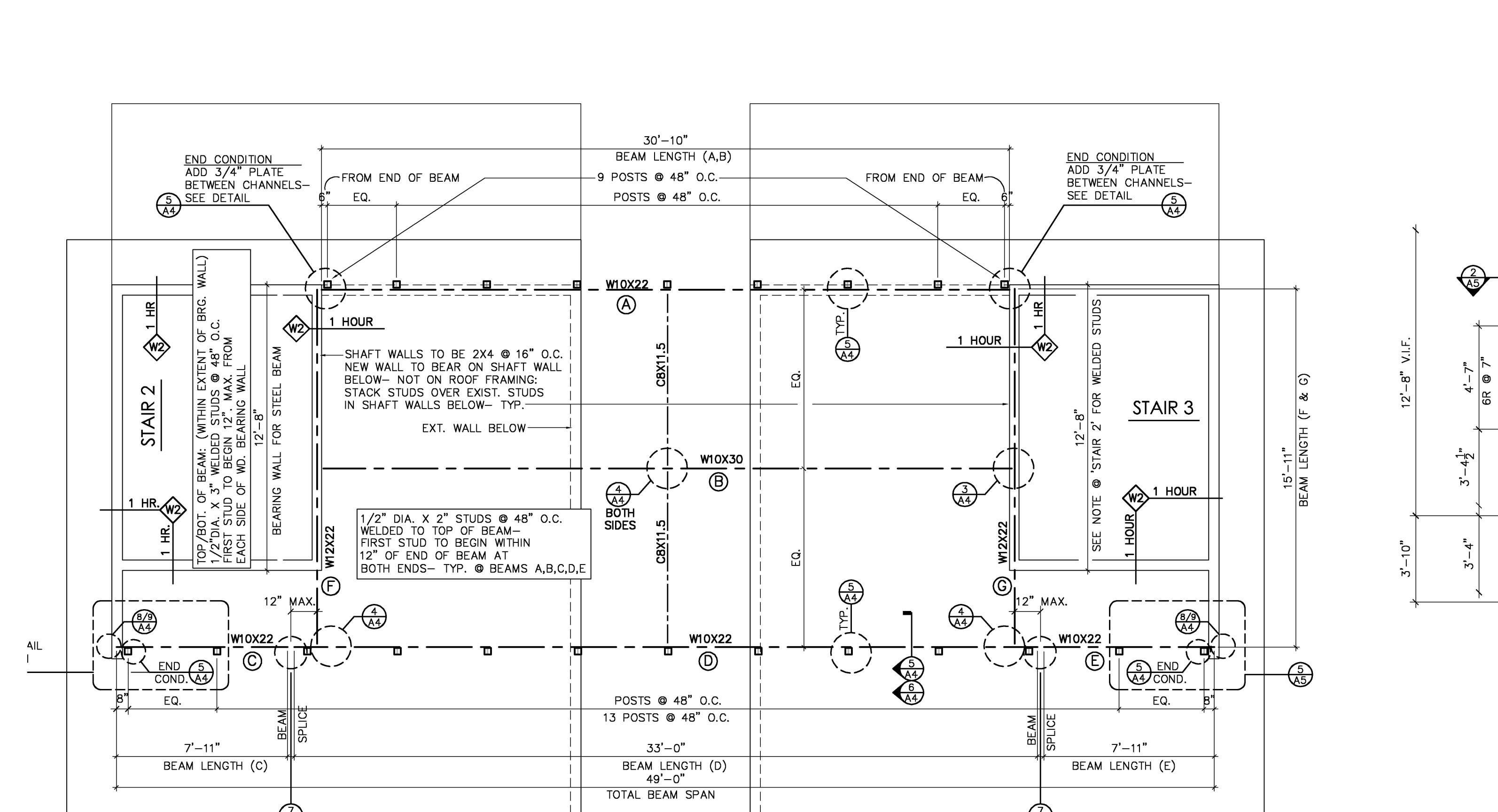
7 BEAM SPLICER DETAIL (for shear only)
SCALE: 1-1/2" = 1'-0"



8 BEAM POCKET @ OUTSIDE WALL
SCALE: 1-1/2" = 1'-0"



9 SECTION IN FRONT OF BEAM POCKET
SCALE: 1-1/2" = 1'-0"



GENERAL NOTES:

PAINT ALL STEEL AFTER ERECTION ACCORDING TO THE FOLLOWING SPECIFICATION:
PRIOR TO FINISH COATING, STEEL SHOULD BE PRIMED, CLEANED OF RUST AND DIRT AND DRY.
PAINT TO BE EITHER SHERWIN WILLIAMS OR BENJAMIN MOORE SUITABLE FOR FINISH OVER STEEL - 2 FINISH COATS APPLY PAINT IN STRICT ACCORDANCE W/ MFR. RECOMMENDED APPLICATION PROCEDURES AND THICKNESS

CABLE: (CABLE RAILS)
CABLE TO BE JOHNSON ARCHITECTURAL - (SEE CABLE HARDWARE FOR WEBSITE) OR APPROX. EQUAL OF BELOW LISTED SPECS. 1X19 CONSTRUCTION, TYPE 316 STAINLESS STEEL, 3/16" DIAMETER. INSTALL CABLE ONLY AFTER STEEL HAS BEEN PAINTED AND WOOD CAP RAIL IS COMPLETELY INSTALLED AND SECURED. TIGHTEN CABLE TO [350# MIN. 500# MAX.] OF TENSION & IN STRICT ACCORDANCE TO MFR. INSTALLATION INSTRUCTIONS

CABLE HARDWARE (ALL HARDWARE TO BE STAINLESS STEEL):
HARDWARE TO BE JOHNSON ARCHITECTURAL HARDWARE (WWW.CSJOHNSON.COM) OR APPROVED EQUAL. HARDWARE TO BE AS LISTED:
STANCHION TERMINAL - MACHINE SWAGED
BUTTON AND SWAGE TURNBUCKLE - MACHINE SWAGED
CABLE TO BE CONTINUOUS FROM END CONDITION TO END CONDITION EACH CABLE RUN WILL HAVE 1 STANCHION TERMINAL AND 1 BUTTON & SWAGE TURNBUCKLE

PRICING AND INSTALLATION
STEEL PACKAGE TO INCLUDE SUPPLY OF ALL STRUCTURAL STEEL, FOR DECK SUPPORT AND RAIL POSTS, CABLE AND FITTINGS FOR RAILING, ALL ERECTION OF STEEL/POSTS AND CABLE RAIL MATERIALS AND INSTALLATION ACCORDING TO DRAWINGS AND SPECIFICATIONS.
BREAK OUT PRICE FOR SUPPLY AND INSTALL OF THE CABLE RAILS. THE CABLES WILL NEED TO BE INSTALLED WITH A SECOND SITE VISIT AS ALL STEEL WILL BE PAINTED PRIOR TO CABLE INSTALLATION.

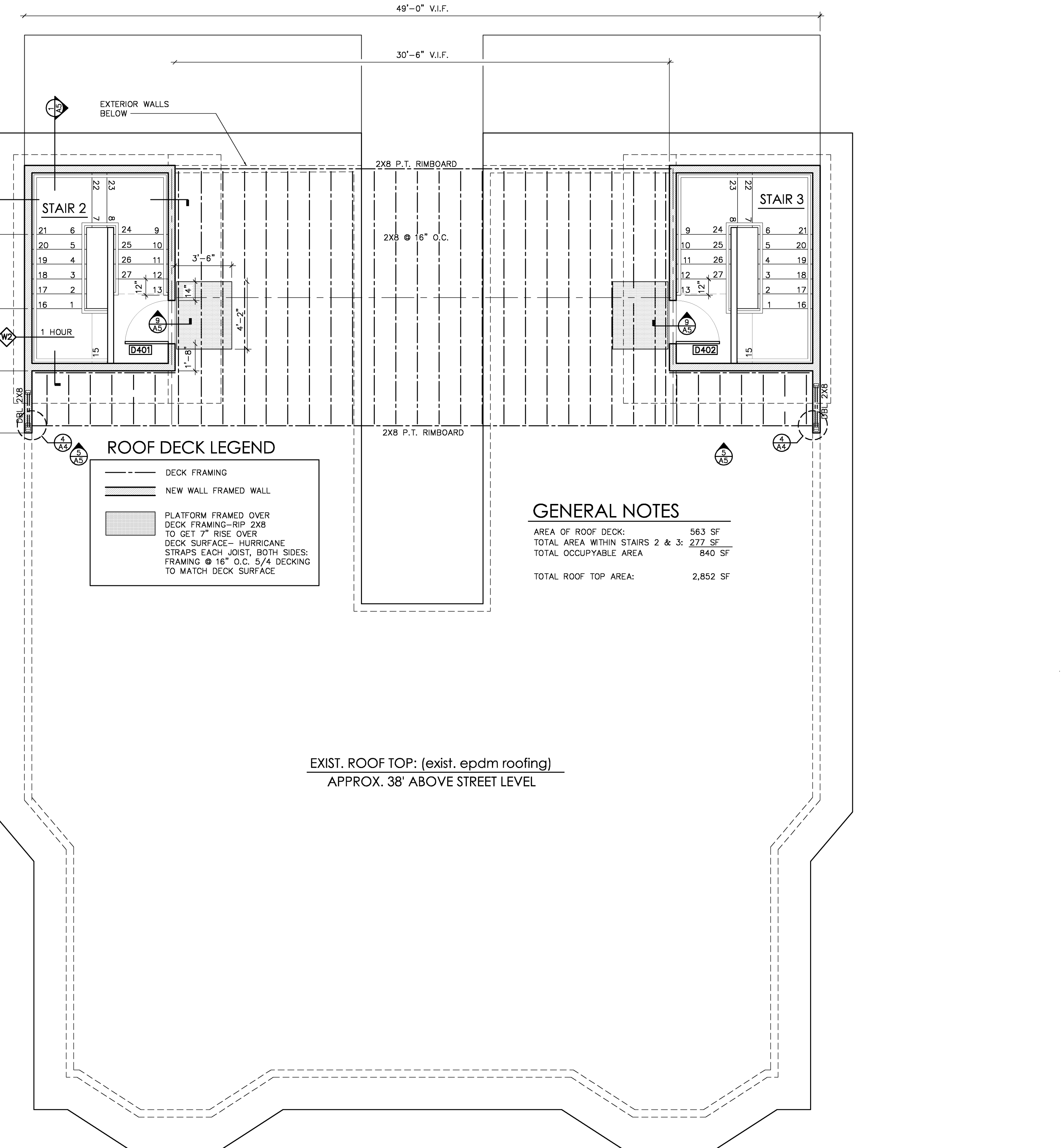
SHOP DRAWINGS ARE RECOMMENDED BUT NOT REQUIRED. IT IS THE RESPONSIBILITY OF THE STEEL FABRICATOR/ERECTOR TO CONFIRM ALL DIMENSIONS PRIOR TO FABRICATION, WITHOUT SHOP DRAWINGS, SUBMIT LIST OF MATERIALS AND SIZES TO ARCHITECT PRIOR TO FABRICATION. ADDITIONALLY, PRIOR TO ERECTION/DELIVERY, ARCHITECT TO VISIT SHOP TO CONFIRM APPROPRIATE FABRICATION WITH DRAWING SET. ARCHITECT IS IN NO WAY CERTIFYING WELDS, CONFIRMING NOR DENYING FIELD DIMENSIONS OR TO BE HELD RESPONSIBLE FOR MISSED FABRICATION DETAILS OR MATERIALS. IT IS THE RESPONSIBILITY OF THE CONTRACTOR TO CERTIFY WELDS ARE AS SPECIFIED.

STEEL NOTES
ALL STEEL TO BE SHOP PRIMED ACCORDING TO SPEC. BELOW.
STRUCTURAL STEEL SHALL COMPLY WITH THE FOLLOWING SPECIFICATIONS:
FIELD VERIFY ALL DIMENSIONS PRIOR TO FABRICATION

STRUCTURAL STEEL NOTES:
VERIFY FIELD CONDITIONS PRIOR TO ORDERING MATERIALS OR FABRICATING STRUCTURAL STEEL. ACCURATELY DETERMINE FIELD GEOMETRY AND DIMENSIONS PRIOR TO SHOP FABRICATION.
ALL WORK SHALL BE SHOP-FABRICATED, EXCEPT AS OTHERWISE DETAILED OR PRE-APPROVED BY THE ENGINEER. ONLY DESIGNATED OR PRE-APPROVED FIELD WELDING SHALL BE ALLOWED.
REPORT ANY CONDITIONS THAT DIFFER FROM THOSE DETAILED HEREIN. DO NOT PROCEED WITH DEPENDENT WORK UNTIL DISCREPANCIES AND/OR MISSING DETAILS HAVE BEEN RESOLVED BY THE ENGINEER.
DO NOT MODIFY DETAILS OR SUBSTITUTE MATERIALS WITHOUT THE EXPRESS WRITTEN CONSENT OF THE ENGINEER.

MATERIALS:
STEEL PLATES AND SHAPES: ASTM A36, OR BETTER.
PAINT (MIN.): WATER-BASED INORGANIC ZINC PRIMER; 4.8 MILS WET/3.0 MILS DRY. SURFACE PREPARATION, APPLICATION, TEMP. CURING, PROTECTION, ETC. SHALL BE IN STRICT COMPLIANCE WITH PAINT MANUFACTURER'S RECOMMENDATIONS.
BOLTS:
TIMBER TO STEEL: ASTM A307, ASTM A36 OR BETTER; HOT-DIP GALVANIZED ASTM A153. HEAVY FLAT WASHERS AND DOUBLE NUTS, TORQUE FIRST NUT TO "WOOD CRUSHING".
STEEL TO STEEL: ASTM A325 HOT-DIP GALVANIZED, 3/4" DIAMETER BOLTS IN 13/16 INCH DIAMETER DRILLED HOLE, UNLESS NOTED OTHERWISE. LUBE THREADS AND TORQUE TO 150 FT-LBS.
WELDING:
E70XX ELECTRODES, AWS D1.1 PROCEDURES. QUALIFIED AND EXPERIENCED WELDERS (CERTIFIED WELDERS PREFERRED).

1 STEEL FRAMING PLAN FOR ROOF DECK
SCALE: 1" = 10'



2 WOOD FRAMING PLAN FOR ROOF DECK/STAIRS
SCALE: 1" = 10'

february 21, 2005

► ROOF-TOP DECK PLAN AND DETAILS

DRAWING LIST:

A4 ROOF-TOP DECK PLANS AND DETAILS

A5 STAIR PLANS/DETAILS AND DETAILS

(new Drawing Sheets added to exist. Permit Set with sheets listed below)

[exist. Permit Set dated Nov. 30, 2004]

A0 NOTES/EXIST. ELEVATIONS

A1 FIRST LEVEL PLANS

A2 SECOND/THIRD LEVEL

A3 BUILDING ELEVATIONS

E1 ELECTRICAL PLANS

258-262 DANFORTH STREET
 CONDOMINIUM CONVERSION, Portland, Maine

february 21, 2005

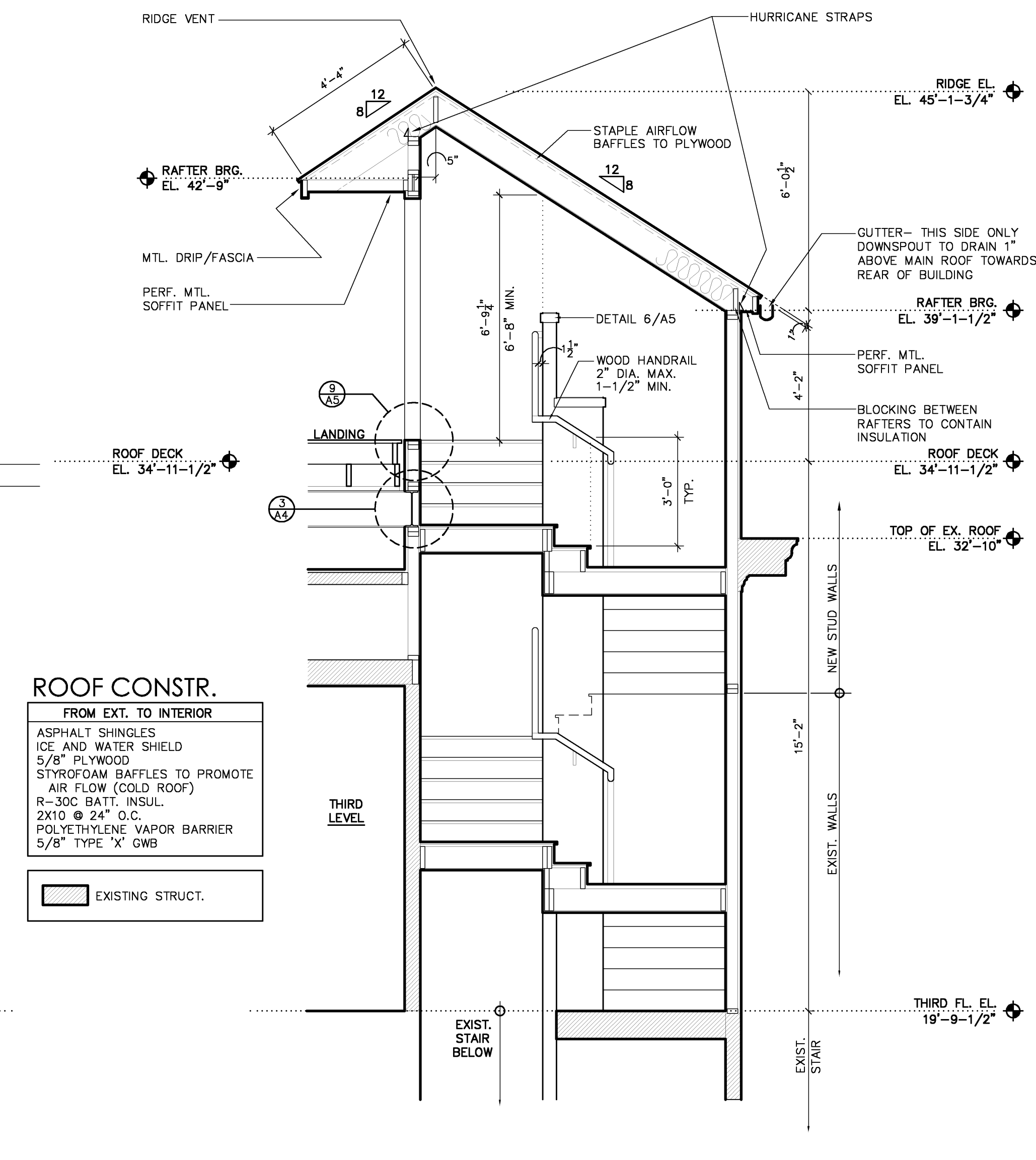
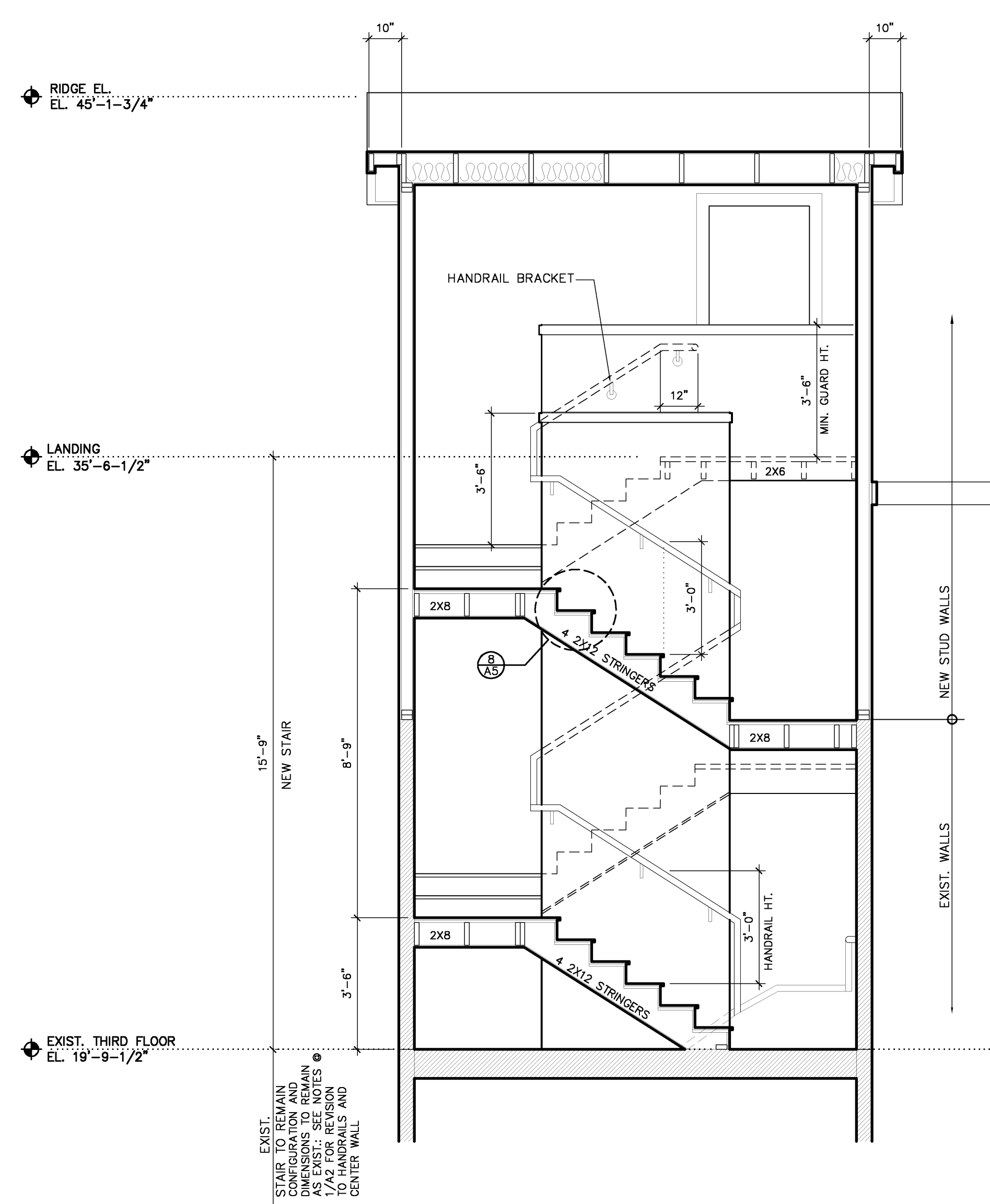
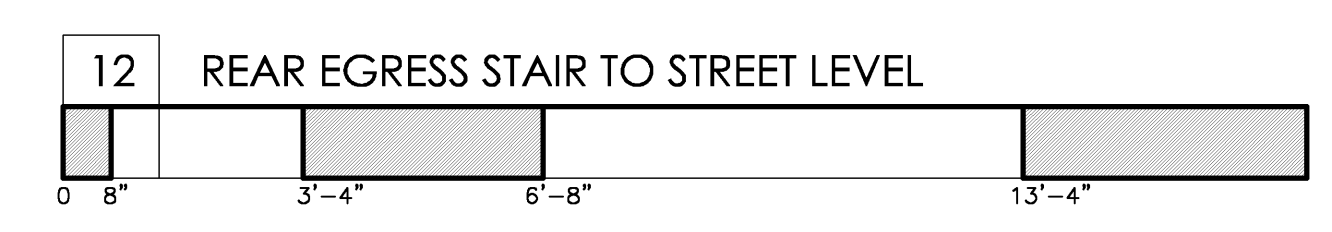
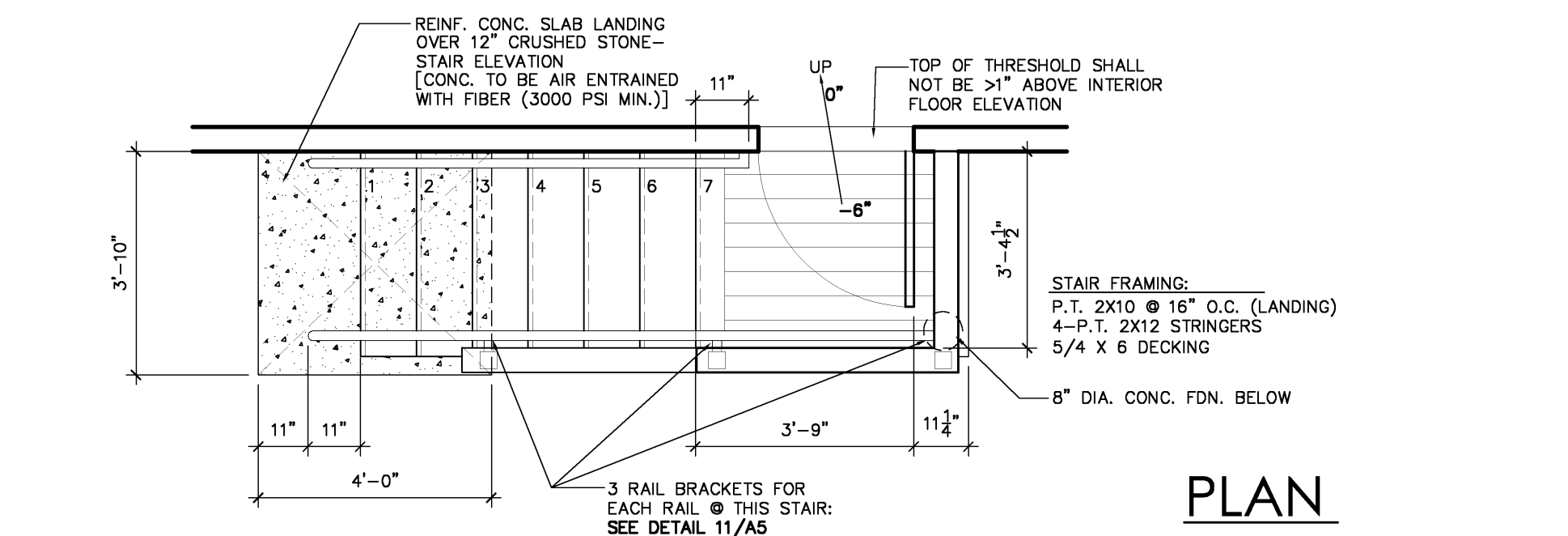
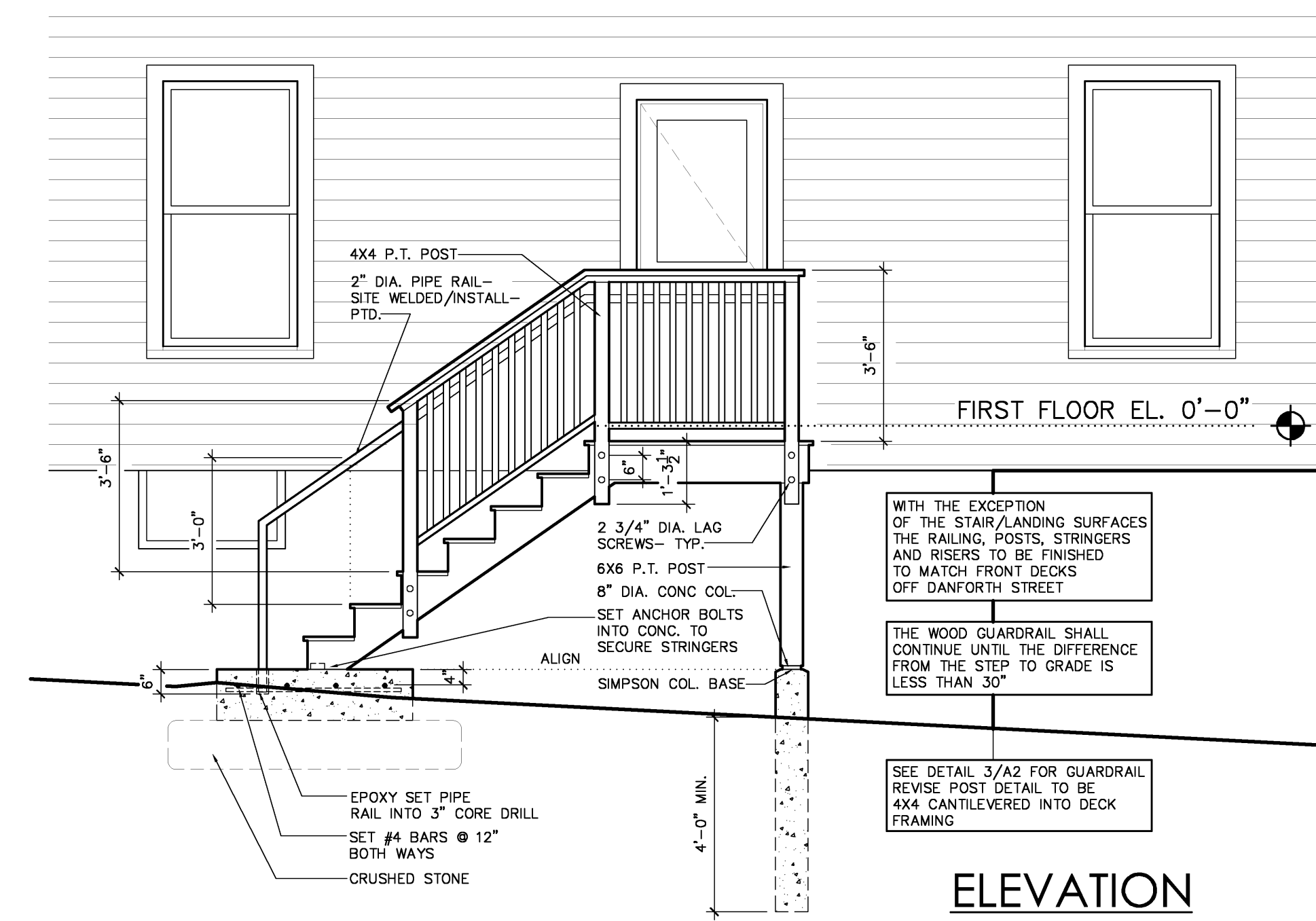
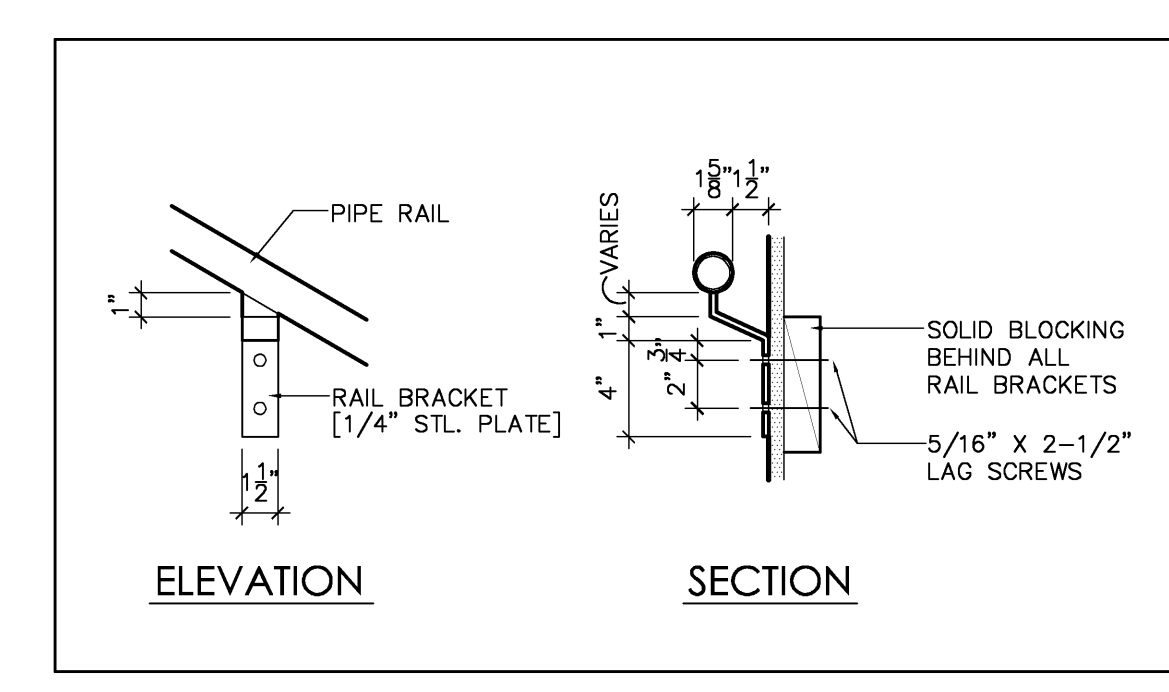
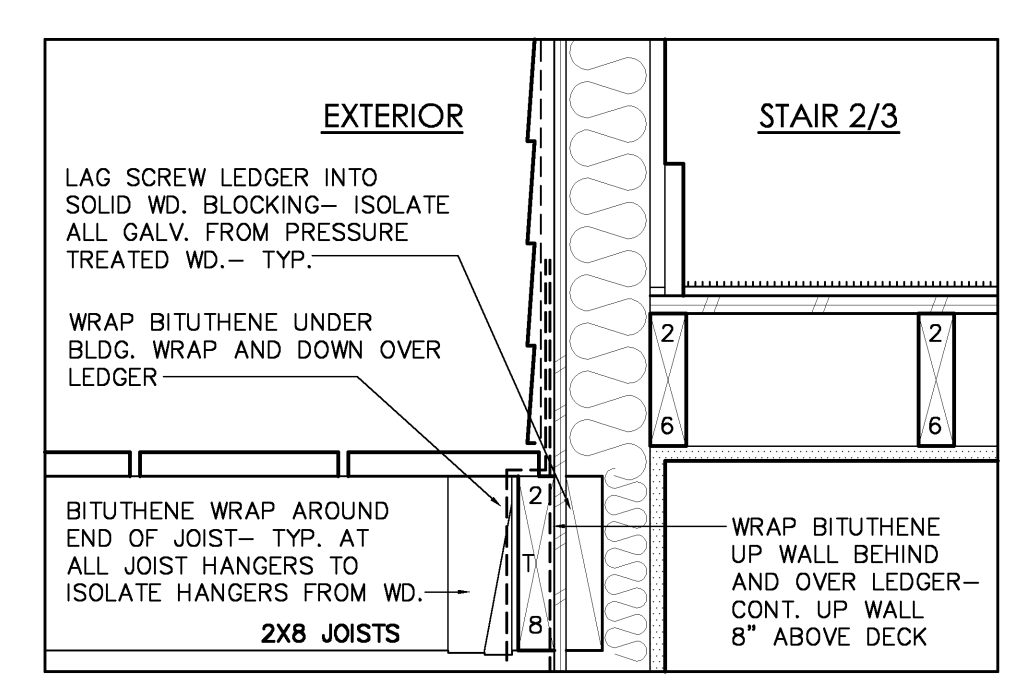
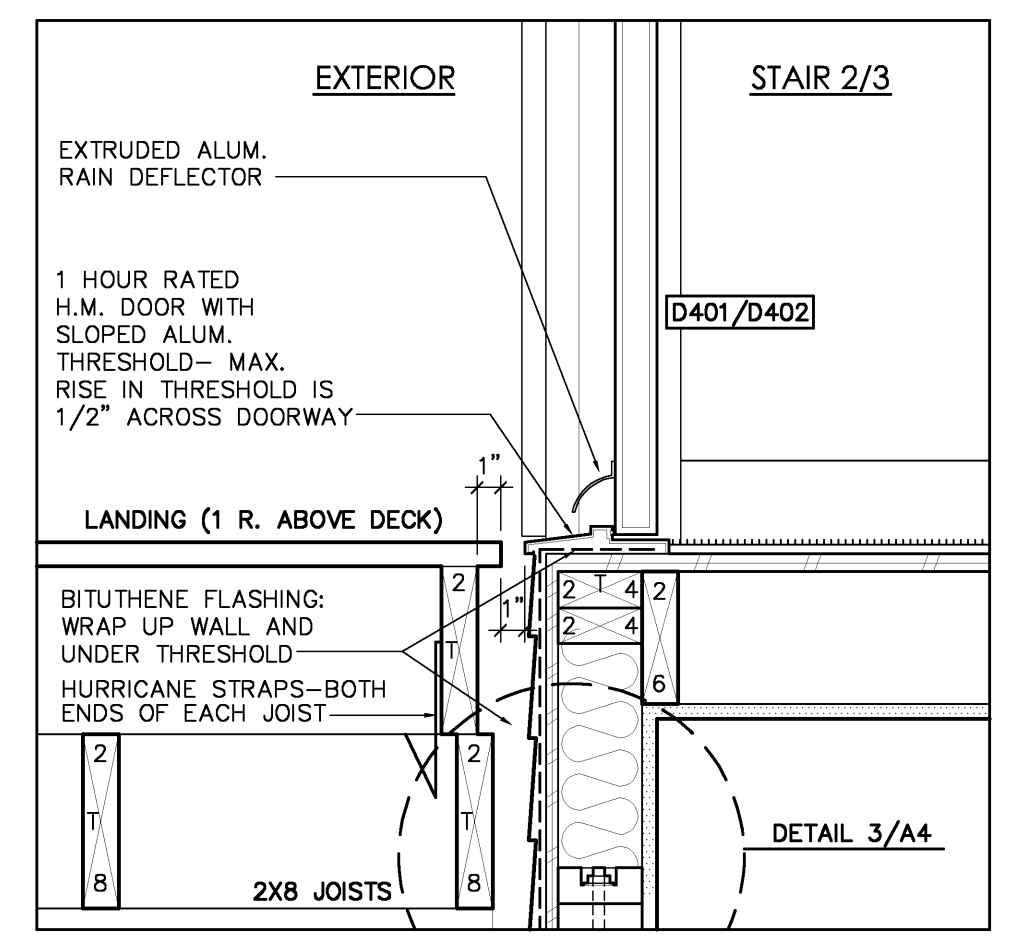
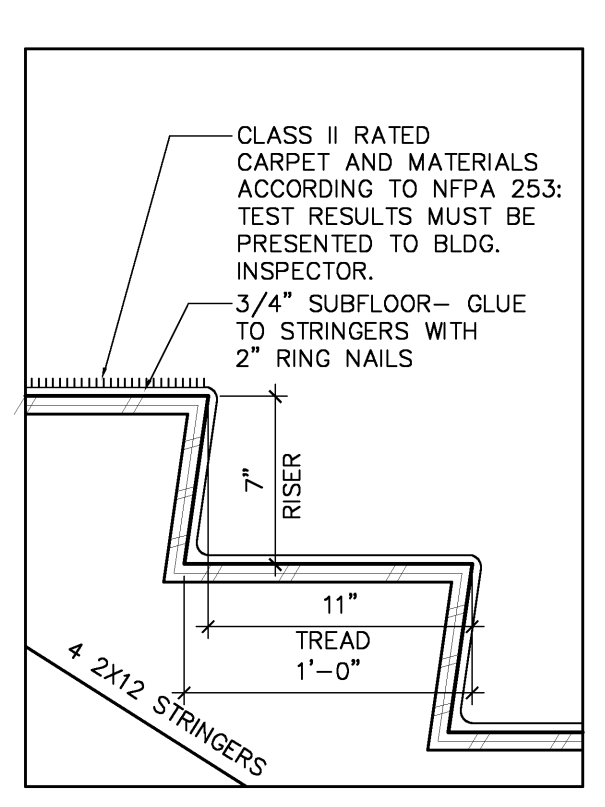
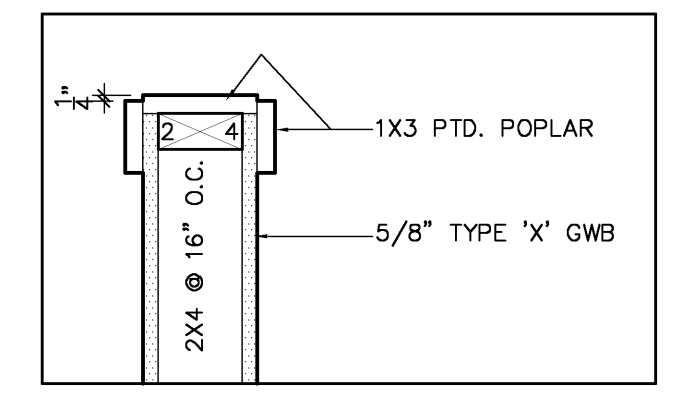
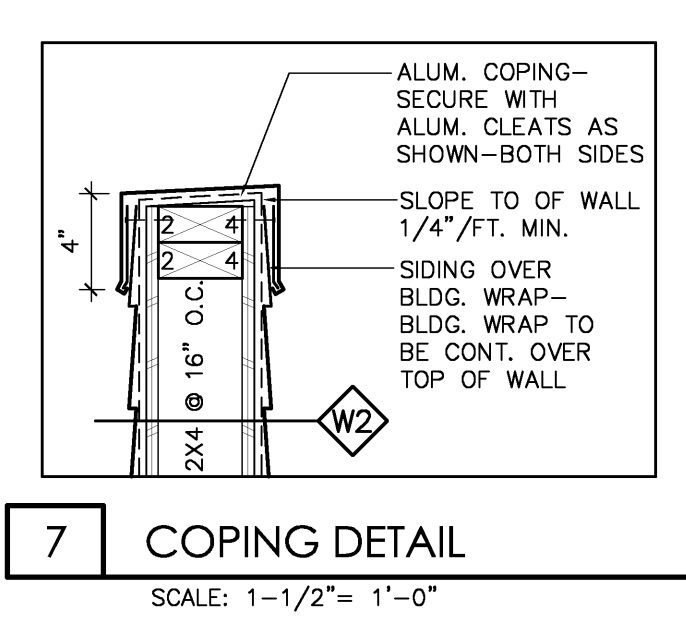
STAIR PLANS/DETAILS

DRAWING LIST:
 A4 ROOF-TOP DECK PLANS AND DETAILS
 A5 STAIR PLANS/DETAILS

(new Drawing Sheets added to exist. Permit Set with sheets listed below)

[exist. Permit Set dated Nov. 30, 2004]

A0 NOTES/EXIST. ELEVATIONS
 A1 FIRST LEVEL PLANS
 A2 SECOND/THIRD LEVEL
 A3 BUILDING ELEVATIONS
 E1 ELECTRICAL PLANS



ROOF CONSTR.
 FROM EXT. TO INTERIOR
 ASPHALT SHINGLES
 ICE AND WATER SHIELD
 5/8\"/>

DOOR SCHEDULE- roof deck

ROOM/DOOR #	SIZE	TYPE	TRIM	HARDWARE	RATING	FINISH	REMARKS
D401/402	2'-8" x 6'-8" x 1'-3/4"	INSUL. MTL.	WOOD	LEVER STYLE - PASSAGE	1 HR.	ANTIQUE BRASS OR SATIN NICKEL AS DESIRED	CLOSER

GENERAL NOTES

NEW PRESSURE TREATED WOOD HAS COPPER, CAUSING ACCELERATED CORROSION OF ZINC TREATED FASTENERS. ISOLATE WOOD FROM THESE FASTENERS/HANGERS WITH ICE/WATER SHIELD OR SIMILAR. WHEN ATTACHING P.T. LEADERS, PREDRILL AND INSERT FLEXIBLE PLASTIC TUBING IN THE HOLE PRIOR TO SETTING LAG SCREWS.
 SCREW DECKING TO JOISTS WITH STAINLESS SCREWS- SQ. DRIVE.

