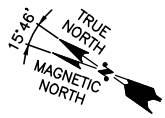
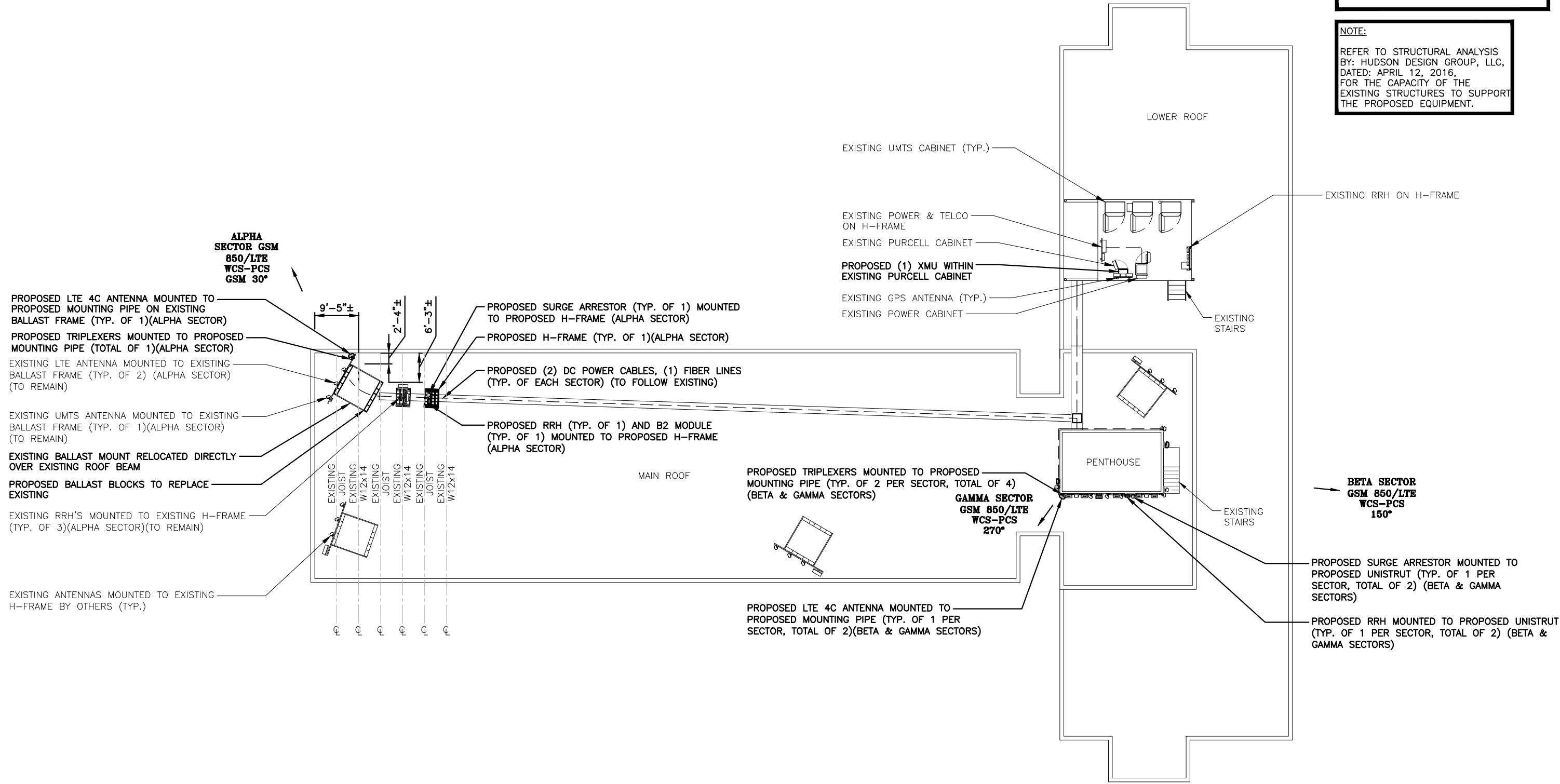


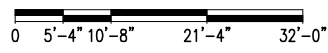
NOTE:
REFER TO THE FINAL RF DATA SHEET FOR FINAL ANTENNA SETTINGS.

NOTE:
REFER TO STRUCTURAL ANALYSIS BY: HUDSON DESIGN GROUP, LLC, DATED: APRIL 12, 2016, FOR THE CAPACITY OF THE EXISTING STRUCTURES TO SUPPORT THE PROPOSED EQUIPMENT.



ROOF PLAN
22x34 SCALE: 3/32"=1'-0"
11x17 SCALE: 3/64"=1'-0"

2
A-1



Hudson Design Group
1600 OSGOOD STREET
BUILDING 20 NORTH, SUITE 309D
N. ANDOVER, MA 01845
TEL: (978) 557-5553
FAX: (978) 336-5586

smartlink
1997 ANNAPOLIS EXCHANGE PKWY
SUITE 200
ANNAPOLIS, MD 21401

SITE NUMBER: MEL05048
SITE NAME: PORTLAND HARBOR TERRACE
284 DANFORTH STREET
PORTLAND, ME 04102
CUMBERLAND COUNTY

at&t
550 COCHITUATE ROAD
FRAMINGHAM, MA 01701

NO.	DATE	REVISIONS	BY
1	05/13/16	ISSUED FOR CONSTRUCTION	FM
0	02/18/16	ISSUED FOR REVIEW	FM

SCALE: AS SHOWN DESIGNED BY: RP DRAWN BY: FM



AT&T
ROOF PLAN
CITY OF PORTLAND
APPROVED SITE PLAN
SUBJECT TO CONDITIONS OF APPROVAL AND STANDARD CONDITIONS
DATE OF APPROVAL: 9/29/2016
PLANNER: Barbara Barhydt
PROJECT NO.: #2016-227