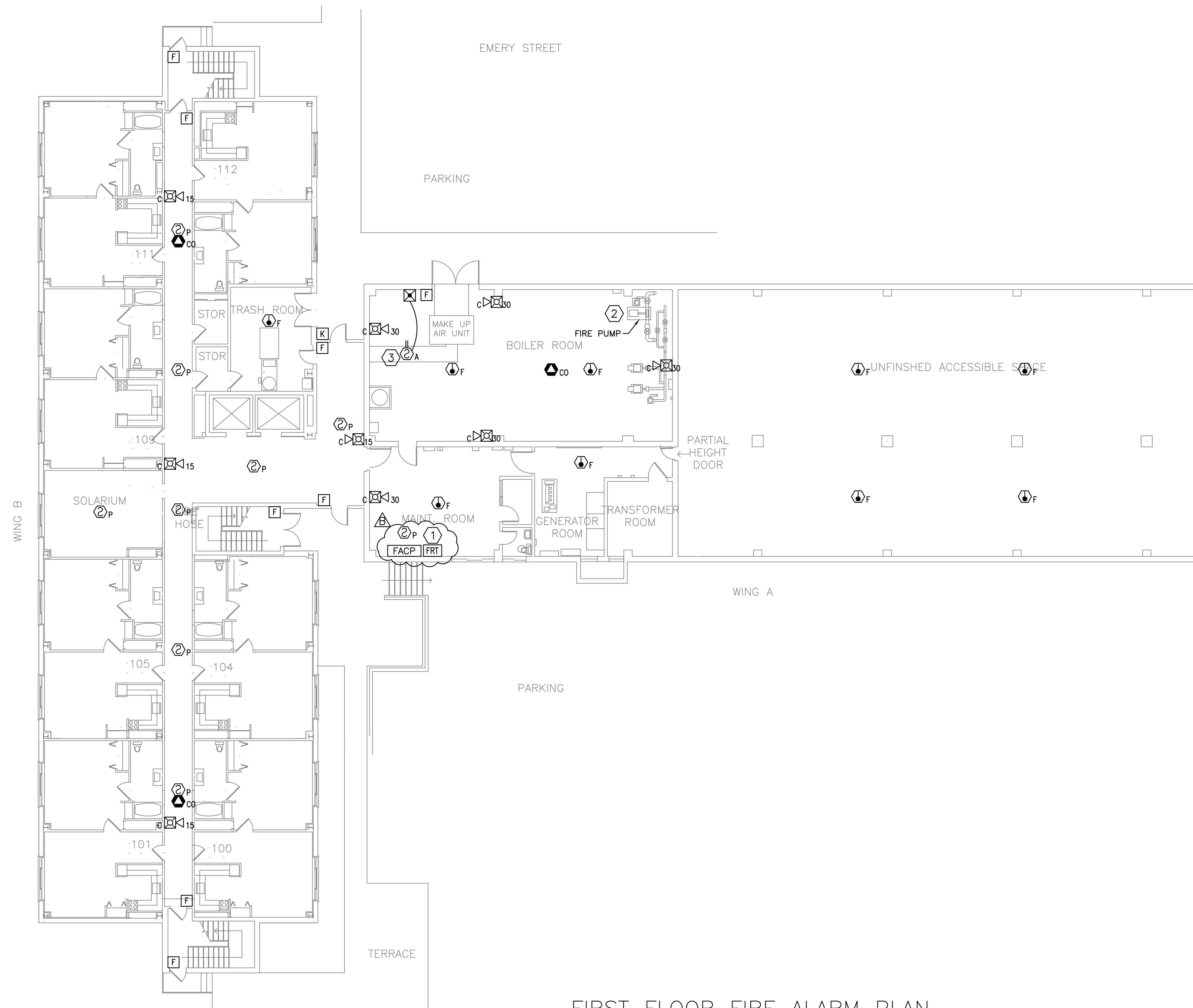


**NOTES:**

- SEE SHEET FA-001 FOR LEGEND, ABBREVIATIONS, AND GENERAL NOTES.

**KEYED NOTES:**

- RADIO TRANSCEIVER SHALL BE AN AES MODEL 7788F TRANSCEIVER AS REQUIRED BY THE CITY OF PORTLAND. PROVIDE WITH GRITSW-01S TAMPER SWITCH ON CABINET FRONT COVER.
- CONNECT TO EXISTING FIRE PUMP CONTROL PANEL AND ALL EXISTING TAMPER AND FLOW SWITCHES.
- PROVIDE DUCT SMOKE DETECTOR IN CEILING MOUNTED SUPPLY DUCTWORK. INSTALL PER NFPA 90A STANDARDS. PROVIDE REMOVE TEST INDICATOR IN ACCESSIBLE SPACE.



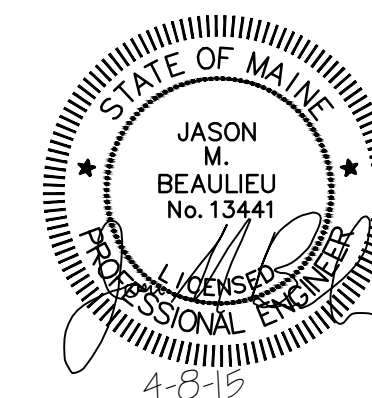
**FIRST FLOOR FIRE ALARM PLAN**

SCALE: 3/32" = 1'-0"

PROJECT



Scale: 3/32" = 1'-0"



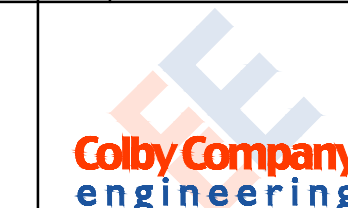
REV	DESCRIPTION	DWN	APP	DATE
B	ADDENDUM 1	JMB	MRL	4/8/15
A	ISSUED FOR CONSTRUCTION	BVD	MRL	3/11/15

PORTLAND HOUSING AUTHORITY  
PORTLAND, MAINE

HARBOR TERRACE  
FIRE ALARM UPGRADE

FIRST FLOOR FIRE ALARM PLAN

PLEASE NOTE: THIS DOCUMENT MAY NOT ACCURATELY REPRESENT THE FINAL DOCUMENT. ONLY AN ENGINEER, ARCHITECT OR SURVEYOR SIGNED, SEALED AND DATED PAPER COPY, PROVIDED BY THIS OFFICE, MAY BE UTILIZED FOR BIDDING OR CONSTRUCTION PURPOSES.



47A York Street  
Portland, Maine 04101  
207.533.7753  
colbycoengineering.com

SIZE: ANSI D  
DATE: 03-11-2015  
DES BY: JMB  
DWN BY: BVD  
CKD BY: MRL

PROJECT NO.  
218.006.002  
SHEET  
10 OF 17

DRAWING NO.  
**FA-109**