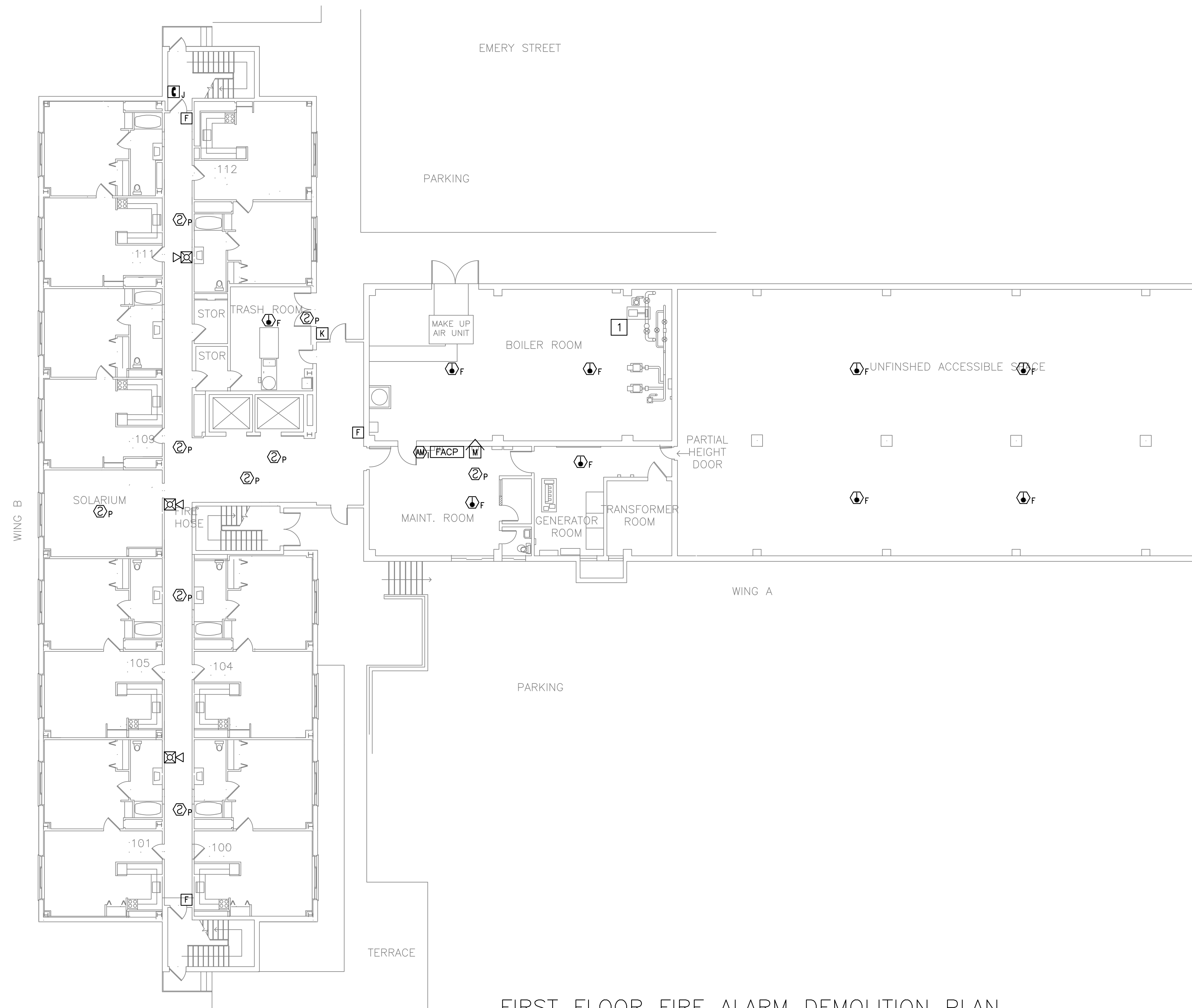


NOTES:

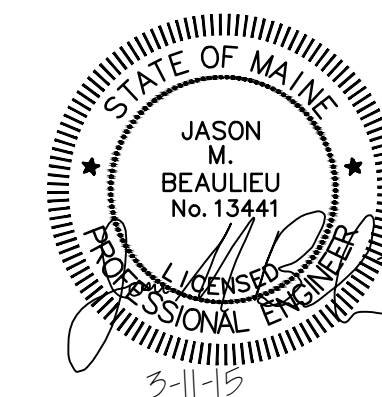
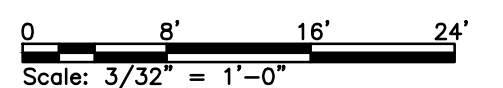
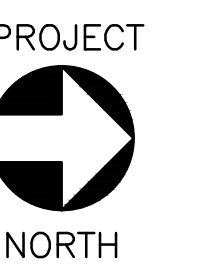
1. SEE SHEET FA-001 FOR LEGEND, ABBREVIATIONS, AND GENERAL NOTES.
2. REMOVE ALL FIRE ALARM EQUIPMENT COMPLETELY UNLESS OTHERWISE INDICATED, AND WHETHER EXPLICITLY SHOWN ON THIS SHEET OR NOT. REMOVE ALL WIRING, AND EQUIPMENT SUPPORTS. CONDUIT IS ALLOWED TO BE RE-USED IF IT IS IN SUITABLE CONDITION.

DEMOLITION KEYED NOTES:

- 1 REMOVE CONNECTIONS TO FIRE PUMP CONTROL PANEL AND ALL TAMPER AND FLOW SWITCHES.

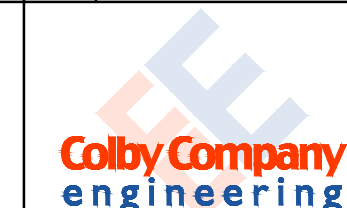


FIRST FLOOR FIRE ALARM DEMOLITION PLAN
SCALE: 3/32" = 1'-0"



				PORTLAND HOUSING AUTHORITY PORTLAND, MAINE	
				HARBOR TERRACE FIRE ALARM UPGRADE	
				FIRST FLOOR FIRE ALARM DEMOLITION PLAN	
A	ISSUED FOR CONSTRUCTION	BVD	MRL	3/11/15	
REV	DESCRIPTION	DWN	APP	DATE	
				ANSI D	PROJECT NO. 218.006.002
				DATE: 03-11-2015	DRAWING NO. FA-101
				DES BY: JMB	SHEET 2 OF 17
				DWN BY: BVD	
				CKD BY: MRL	

PLEASE NOTE: THIS DOCUMENT MAY NOT ACCURATELY REPRESENT THE FINAL DOCUMENT. ONLY AN ENGINEER, ARCHITECT OR SURVEYOR SIGNED, SEALED AND DATED PAPER COPY, PROVIDED BY THIS OFFICE, MAY BE UTILIZED FOR BIDDING OR CONSTRUCTION PURPOSES.



47A York Street
Portland, Maine 04101
207.533.7753
colbycoengineering.com