

GENERAL NOTES

CONTRACTOR TO FIELD VERIFY ALL MEASUREMENTS AND EXISTING CONDITIONS.

CONTRACTOR SHALL PAY FOR ALL FEES AND OBTAIN ALL NECESSARY PERMITS.

THE TERMS, 'SUPPLY', 'FURNISH', 'PROVIDE', ARE TO MEAN, SUPPLY AND INSTALL.

SHOULD THE BIDDER FIND ANY DISCREPANCIES IN, OR OMISSIONS FROM THE DRAWINGS, OR SHOULD THERE BE ANY DOUBT AS TO THEIR MEANING, BIDDER IS TO NOTIFY THE ARCHITECT IN WRITING A MINIMUM OF 10 DAYS BEFORE SUBMITTING BID. CLARIFICATION AND DRAWINGS SHALL BE ADJUSTED AS THE SITUATION REQUIRES.

FIGURE DIMENSIONS SHALL SUPERSEDE SCALE MEASUREMENTS. LARGE SCALE DETAILS SHALL TAKE PRECEDENCE OVER SMALL, AND MEASUREMENTS MUST BE VERIFIED AT THE SITE.

THE MORE SPECIFIC DESCRIPTION OF THE WORK TAKES PRECEDENCE OVER THE MORE GENERAL.

THE MOST RECENT DRAWINGS, ADDENDA, OR AGREEMENTS TAKE PRIORITY.

NO ALTERATIONS SHALL BE MADE IN THE DRAWINGS EXCEPT BY THE ARCHITECT.

IN CASE OF ANY CONFLICT OR INCONSISTENCY BETWEEN THE DRAWINGS AND OTHER DOCUMENTS, THE ARCHITECT'S INTERPRETATION SHALL GOVERN.

ANY DISCREPANCY BETWEEN FIGURES AND DRAWING SHALL BE SUBMITTED BY THE CONTRACTOR TO THE ARCHITECT, WHOSE DECISION SHALL BE CONCLUSIVE.

IT IS THE INTENT AND UNDERSTANDING THAT THE WORK SHOWN ON THE DRAWINGS AND CALLED OUT ELSEWHERE WILL RESULT IN A COMPLETE, THOROUGH, AND FINISHED PROJECT FOR THE USE INTENDED.

WORK SHALL BE CARRIED OUT BY INDIVIDUALS EXPERIENCED IN THE VARIOUS AREAS OF WORK THAT THEY WILL BE PERFORMING.

WORK SHALL BE PERFORMED IN A MANNER THAT IS EQUAL TO INDUSTRY STANDARDS.

CONTRACTORS ARE TO STORE, USE AND INSTALL ALL PRODUCTS, MATERIALS AND ITEMS IN SUCH A WAY THAT FOLLOWS THE VARIOUS MANUFACTURERS' SPECIFICATIONS AND INSTALLATION REQUIREMENTS.

CONTRACTOR TO FURNISH AND INSTALL ALL LABOR, MATERIALS, EQUIPMENT, PROVIDE LEGAL DISPOSAL OF ALL DEBRIS, AND ANY OTHER RELATED SERVICES INCIDENTAL TO THE RENOVATIONS AND WORK DEPICTED ON THE PLANS.

WORK TO INCLUDE, BUT IS NOT LIMITED TO, THE FOLLOWING: DEMOLITION, CARPENTRY, WINDOW INSTALLATION, DRYWALL, PAINTING, AND CLEANUP.

WINDOW SCHEDULE

SYMBOL	EXIST MASONRY OPNG	TYPE	MATERIAL	NUMBER
A	57 1/4" x 43 1/2" H	PAIR/MULLED/SINGLE HUNG	ALUM	5
NB/RNB	92" x 58" H	FIXED/SING HUNG-SING HUNG/FIXED	ALUM	4/54
NC/NRC	72" x 58" H	FIXED/SING HUNG-SING HUNG/FIXED	ALUM	11/11
D	18 1/4" x 42" H	FIXED	ALUM	20
E	92" x 32" H	FIXED/ AWNING	ALUM	1
F	48" x 32" H	AWNING/FIXED	ALUM	1
NG/RNG	100" x 58" H	FIXED/SING HUNG-SING HUNG/FIXED	ALUM	50/50
				218
				TOTAL

U VALUE TO BE EQUAL TO OR LESS THAN .43

SHGC TO BE EQUAL TO OR LESS THAN .4

STRUCTURAL PERFORMANCE RATINGS TO MEET OR EXCEED LOCAL AND STATE CODE REQUIREMENTS

OPERABLE WINDOWS TO BE EQUIPPED WITH OPENING RESTRICTION DEVICES

SCREENS ARE TO BE PROVIDED ON ALL OPERABLE SASH

ALL WINDOWS TO HAVE INSULATED GLASS WITH LOW E COATING

TEN ADA DWELLING UNITS ARE TO BE EQUIPPED WITH WINDOW DEVICES TO ALLOW THE OPERATION OF THE WINDOW WITH LESS THAN 5 POUNDS OF LIFTING FORCE.

SHOP DRAWINGS WILL BE REQUIRED AND ARE TO INCLUDE WINDOW FASTENING METHODS DESIGNED, AND STAMPED BY AN ENGINEER REGISTERED IN THE STATE OF MAINE

COLOR OF ALUMINUM COMPONENTS ARE TO BE SELECTED FROM MANUFACTURER'S STANDARD COLOR PALETTE

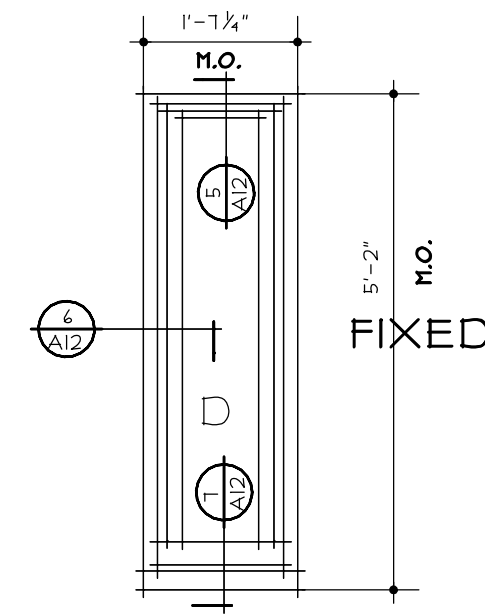
CLEAR OPENING WIDTH OF ALL SINGLE HUNG WINDOWS SHALL BE 28" WITH THE EXCEPTION OF UNIT TYPE "A", WHICH WILL CONSIST OF A MULLED PAIR OF SINGLE HUNG UNITS THAT WILL MAXIMIZE THE GLAZED AREA OF BOTH SASH

TWO SHADES AND HARDWARE ARE REQUIRED FOR EACH UNIT-ONE FOR THE OPERABLE UNIT AND ONE FOR THE FIXED UNIT UNITS ARE TO BE OCCURREDURING INSTALLATION. CARE IS TO BETAKEN TO REMOVE AND REPALCE ITEMS THAT INTERFERE WITH THE WORK.

ALL WINDOWS ARE TO BE CLEANED INSIDE AND OUTSIDE, THIS INCLUDES ALL FRAMES AND GLAZING.

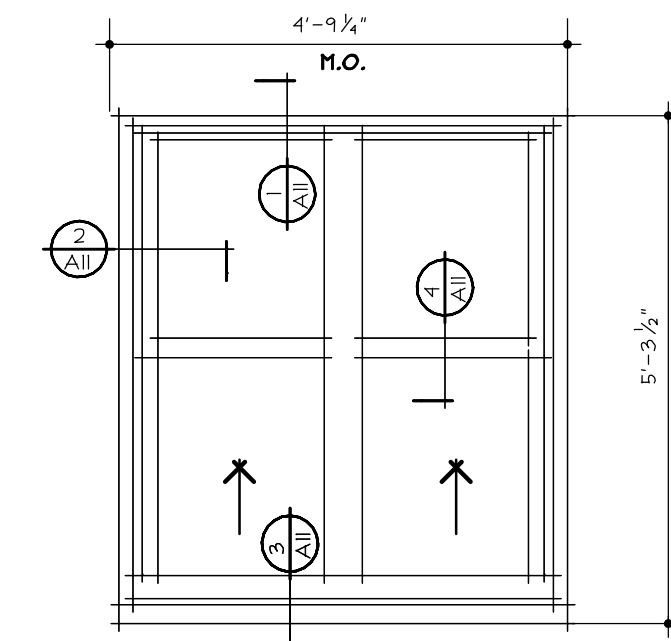
AREA WITHIN THE UNIT IS TO BE CLEANED OF ALL CONSTRUCTION RELATED DEBRIS.

CONTRACTORS ARE TO VERIFY ACTUAL CONDITIONS IN FIELD, INCLUDING SIZES AND NUMBER OF UNITS REQUIRED



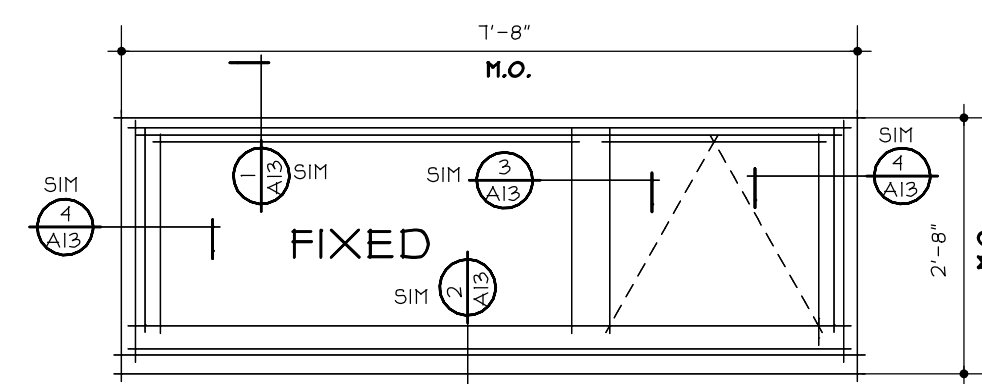
WINDOW TYPE 'D'

SCALE: 1/2"=1'-0"



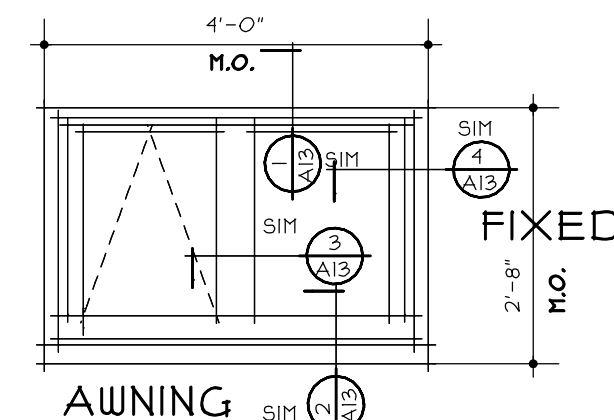
WINDOW TYPE 'A'

SCALE: 1/2"=1'-0"



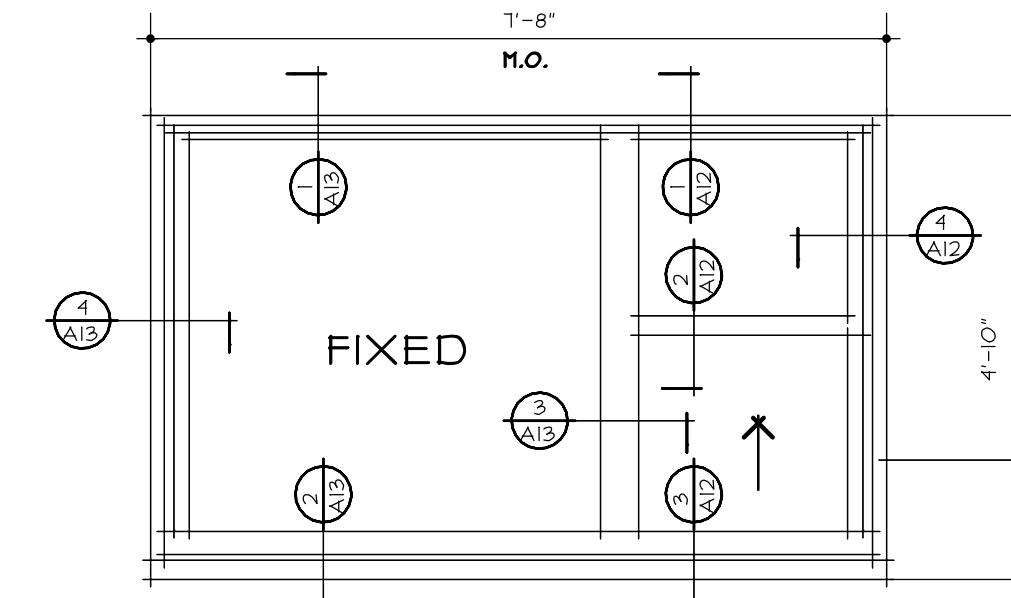
WINDOW TYPE 'E'

SCALE: 1/2"=1'-0"



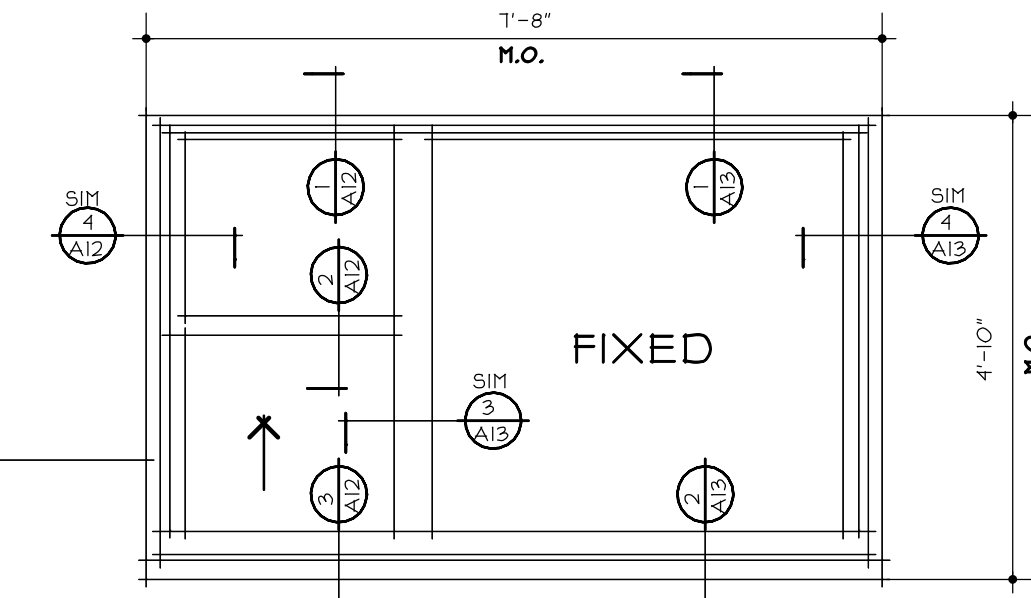
**AWNING
WINDOW TYPE 'F'**

SCALE: 1/2"=1'-0"



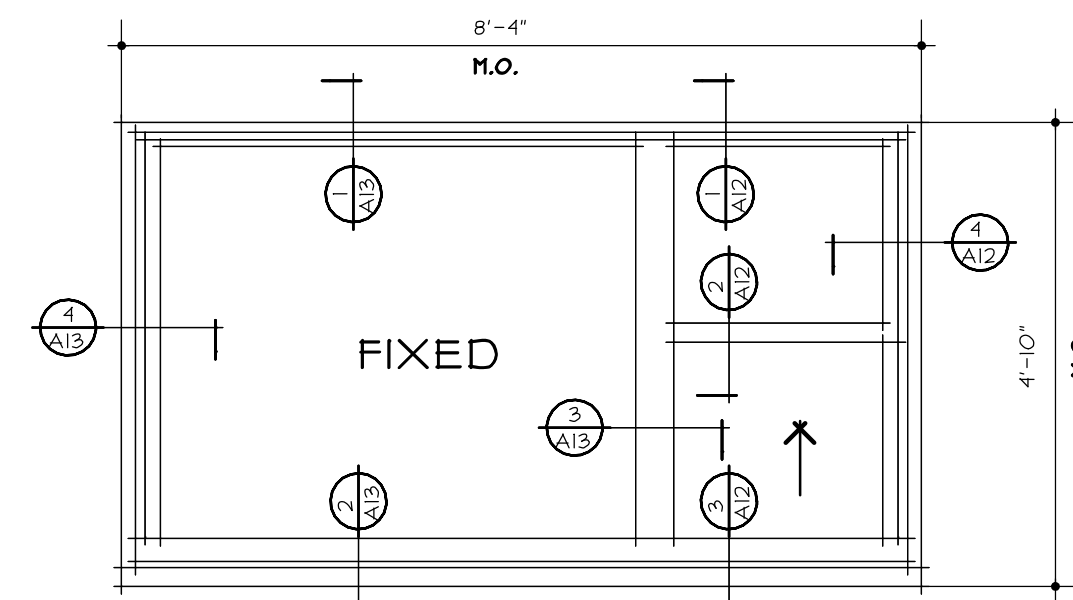
WINDOW TYPE 'NB'

SCALE: 1/2"=1'-0"



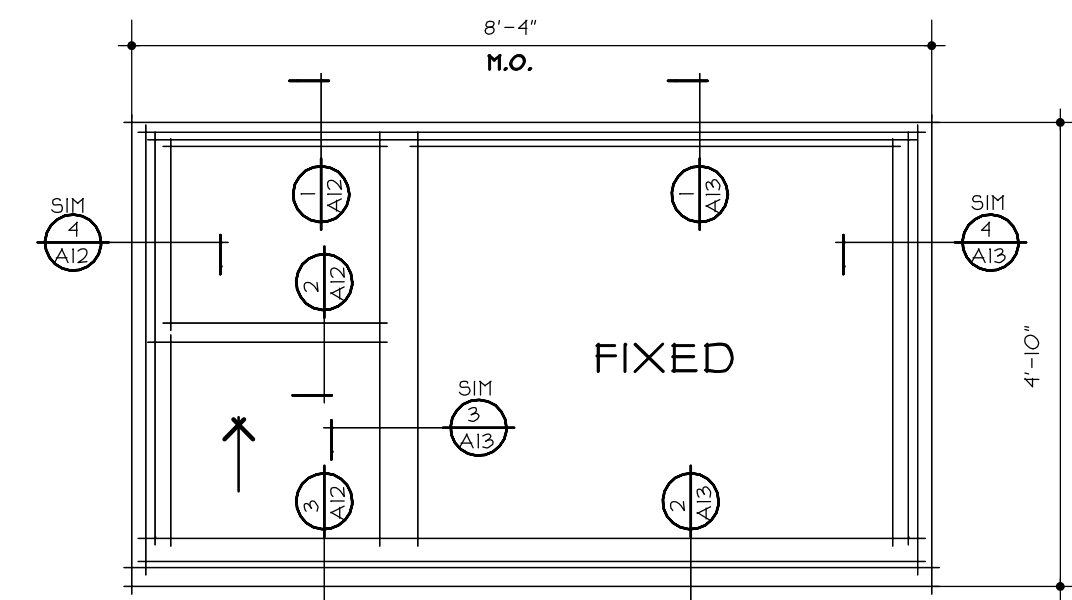
WINDOW TYPE 'RNB'

SCALE: 1/2"=1'-0"



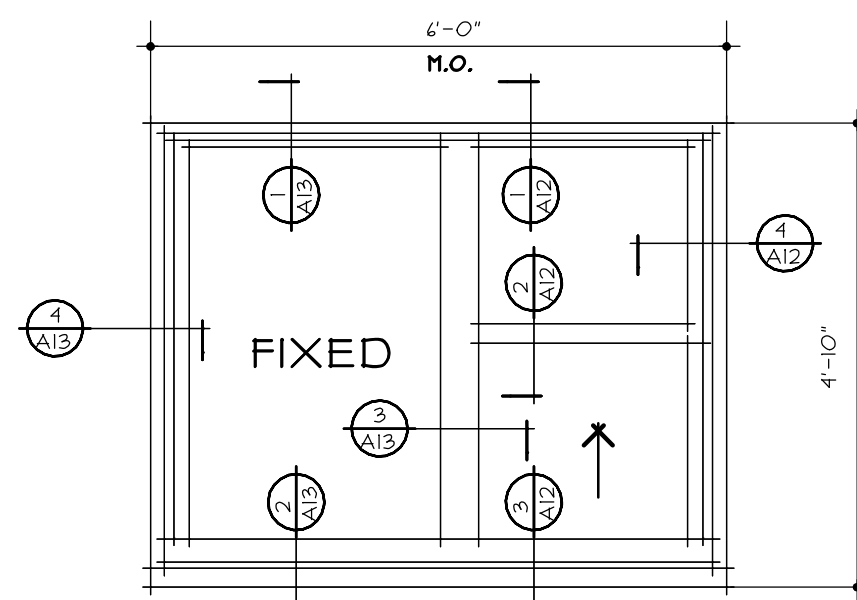
WINDOW TYPE 'NG'

SCALE: 1/2"=1'-0"



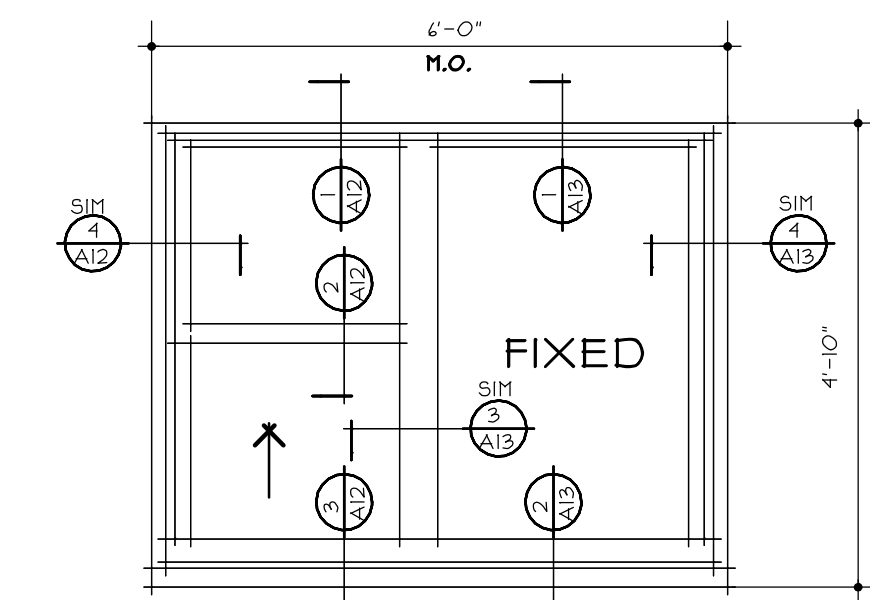
WINDOW TYPE 'RNG'

SCALE: 1/2"=1'-0"



WINDOW TYPE 'NC'

SCALE: 1/2"=1'-0"



WINDOW TYPE 'NRC'

SCALE: 1/2"=1'-0"

GTA.2 architects

222 ST JOHN STREET
TOWER X

portland, maine 04102

207-771-5461



S. THOMAS
03/30/2015

ISSUED

revisions

date
MARCH, 2015

sheet title
**WINDOW
SCHEDULE**

scale
AS NOTED

drawn by
SMT

project number
1315

sheet number

A 9