

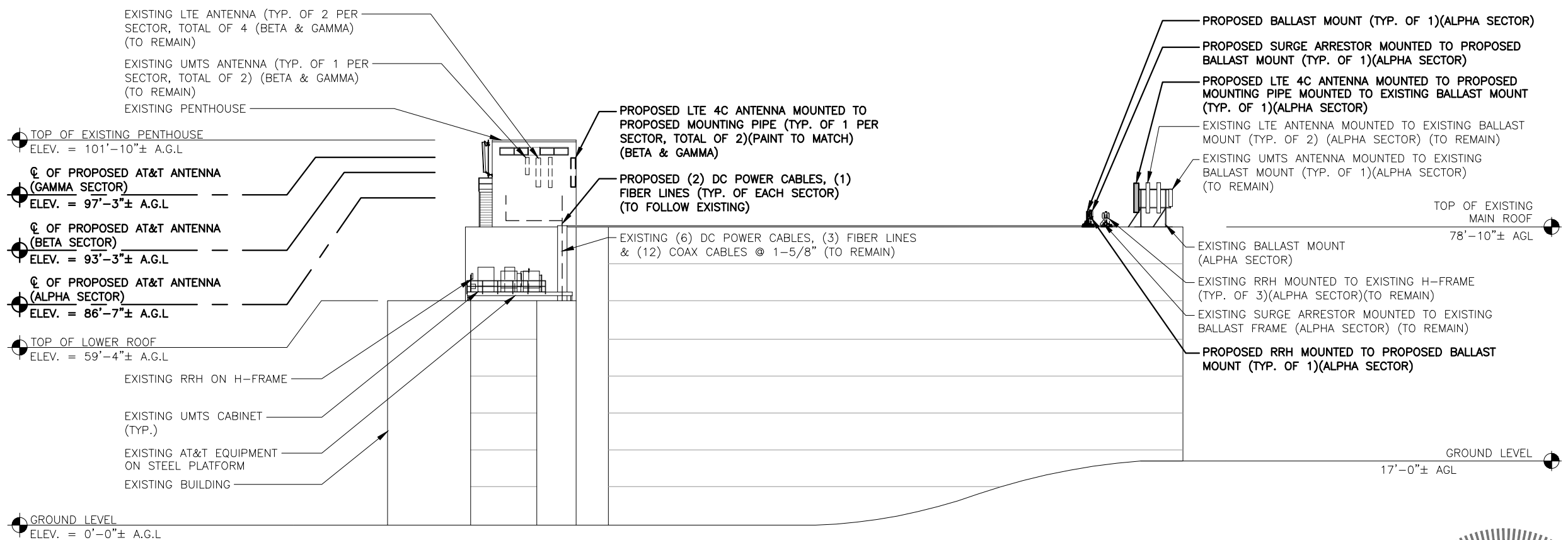
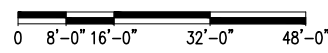
NOTE:
REFER TO THE FINAL RF DATA SHEET FOR FINAL ANTENNA SETTINGS.

NOTE:
REFER TO STRUCTURAL ANALYSIS BY: HUDSON DESIGN GROUP, LLC, DATED: APRIL 12, 2016, FOR THE CAPACITY OF THE EXISTING STRUCTURES TO SUPPORT THE PROPOSED EQUIPMENT.

NOTE:
ALL NEW ANTENNA, RRH, SURGE ARRESTORS AND MOUNTS TO BE PAINTED TO MATCH SURROUNDINGS, PER LANDLORD SPECIFICATIONS.

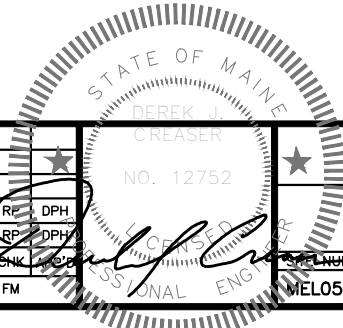
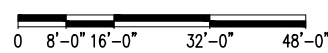
EXISTING NORTHEAST ELEVATION
22x34 SCALE: 1/16"=1'-0"
11x17 SCALE: 1/32"=1'-0"

1
A-3



PROPOSED NORTHEAST ELEVATION
22x34 SCALE: 1/16"=1'-0"
11x17 SCALE: 1/32"=1'-0"

1
A-3



Hudson Design Group

1600 OSGOOD STREET
BUILDING 20 NORTH, SUITE 3090
N. ANDOVER, MA 01845

TEL: (978) 557-5553
FAX: (978) 336-5586

smartlink

1997 ANNAPOLIS EXCHANGE PKWY
SUITE 200
ANNAPOLIS, MD 21401

SITE NUMBER: MEL05048
SITE NAME: PORTLAND HARBOR TERRACE

284 DANFORTH STREET
PORTLAND, ME 04102
CUMBERLAND COUNTY

at&t

550 COCHITUATE ROAD
FRAMINGHAM, MA 01701

NO.	DATE	REVISIONS	BY
1	05/13/16	ISSUED FOR CONSTRUCTION	FM / RP / DPH
0	02/18/16	ISSUED FOR REVIEW	FM / RP / DPH

SCALE: AS SHOWN DESIGNED BY: RP DRAWN BY: FM

AT&T

ELEVATIONS
LTE 4C

PROJECT NUMBER: MEL05048
DRAWING NUMBER: A-3
REV: 1