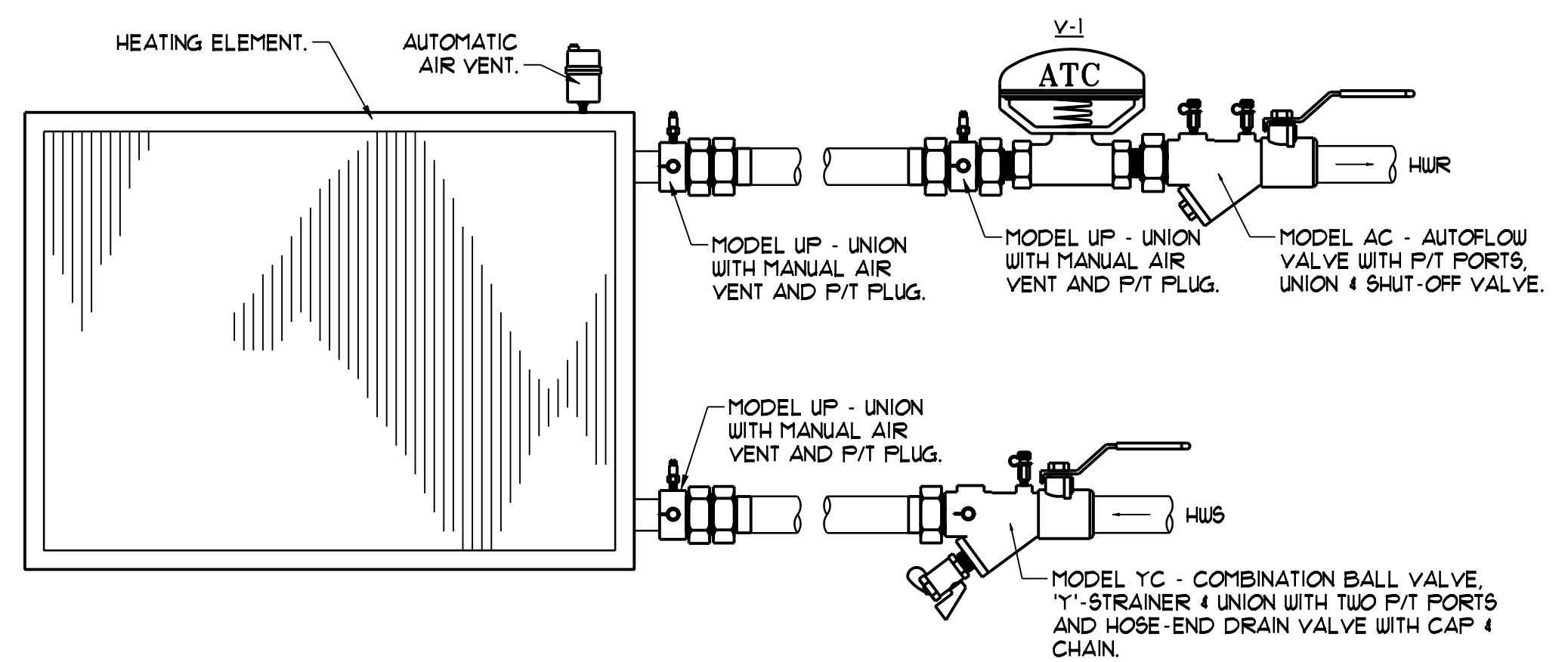
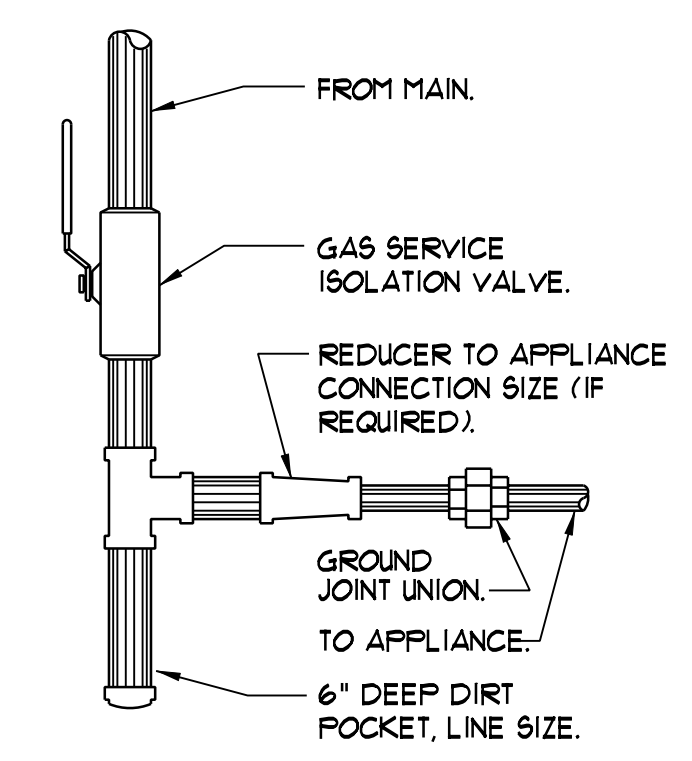


Portland Housing Authority
 14 Baxter Boulevard
 Portland, Maine 04101



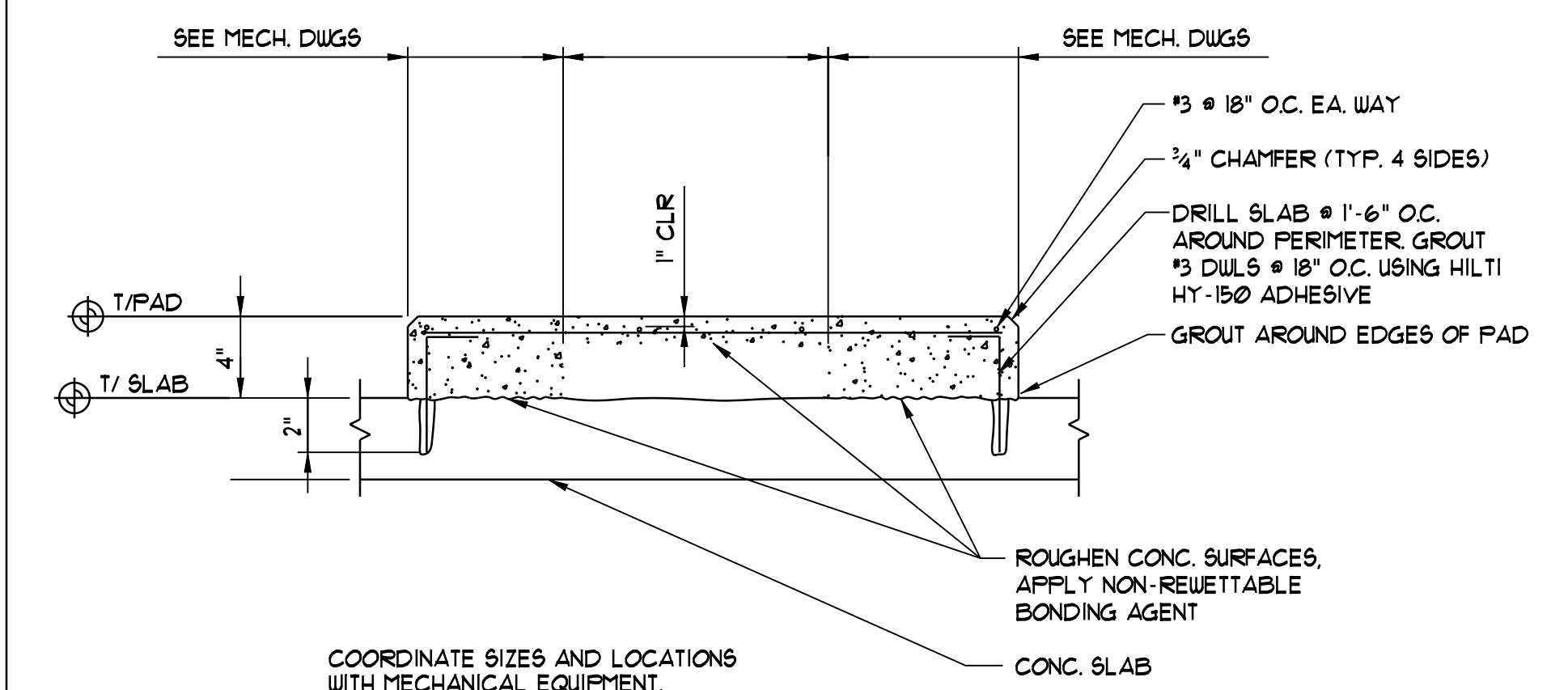
AUTOFLOW VALVE PIPING SCHEMATIC W/ 2-WAY VALVE

NTS
 NOTE - MODEL NUMBERS BASED ON FLOW DESIGN INC. FOR PIPE SIZES 2" AND SMALLER.
 NOTE - DETAIL APPLIES TO HEATING COIL.



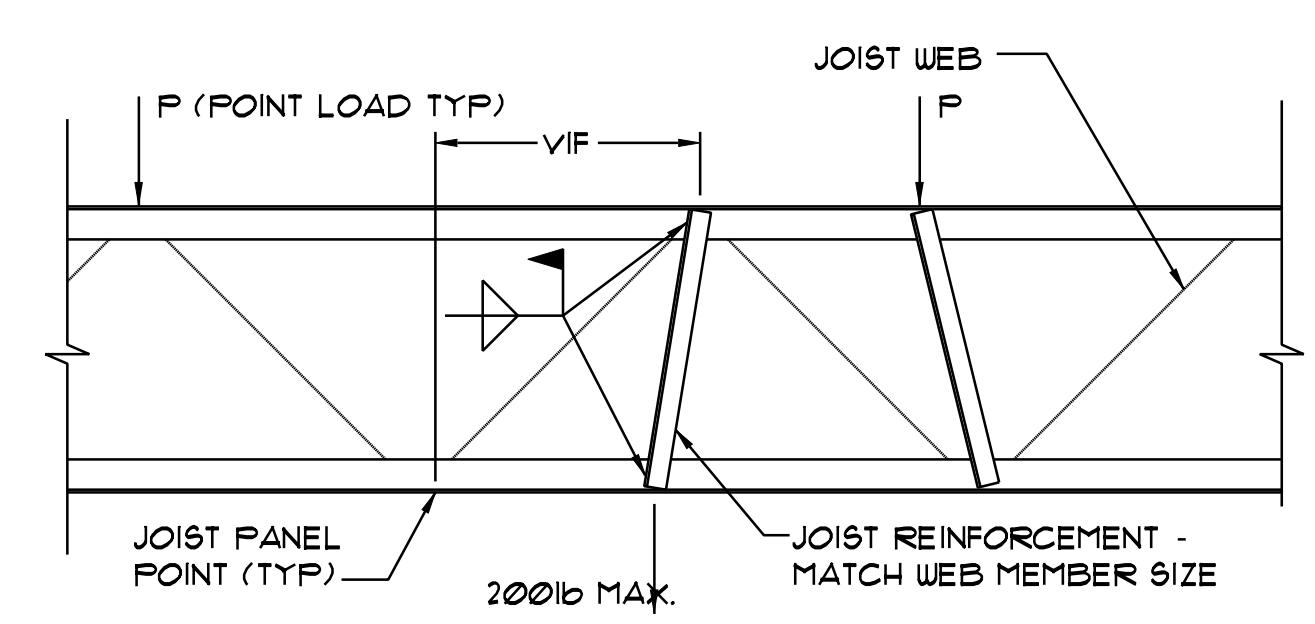
DOWNFEED GAS PIPING CONNECTION DETAIL

NTS
 NOTE APPLIANCES WITH REGULATORS LOCATE PIPING SHOWN HEREIN UPSTREAM OF THE APPLIANCE REGULATOR. PROVIDE A TEST PLUG DOWNSTREAM OF THE APPLIANCE REGULATOR.



TYP. CONCRETE PAD ON SLAB

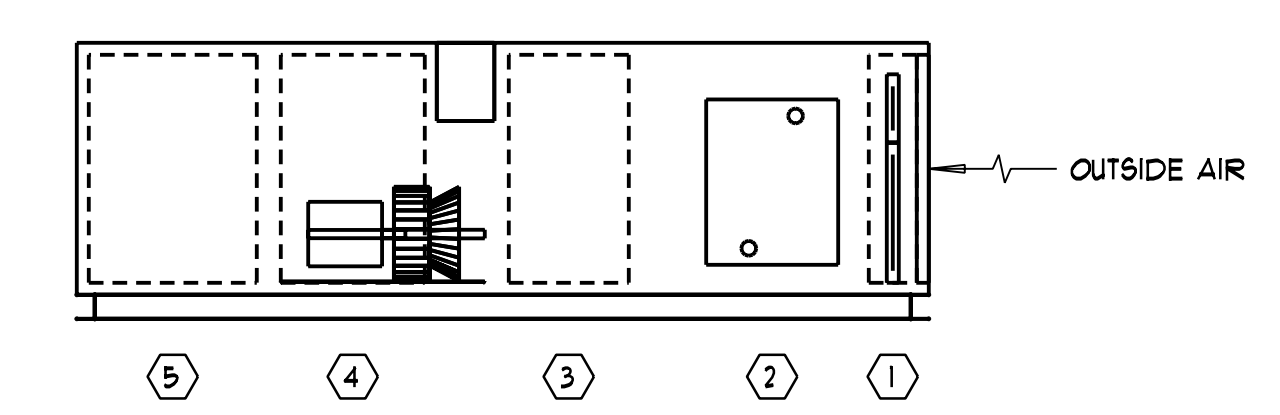
NTS



NOTE
 ALL POINT LOADS ON JOISTS SHALL BE AT PANEL POINTS, OR JOISTS SHALL HAVE WEB REINF AS SHOWN FOR POINT LOADS BETWEEN PANEL POINTS

JOIST WEB REINFORCEMENT DETAIL

NTS



- ① FLAT FILTER
- ② HEATING COIL WITH INTEGRAL FACE AND BYPASS DAMPER
- ③ ACCESS
- ④ PLENUM FAN
- ⑤ DISCHARGE PLENUM

MAU-1 ELEVATION

NTS

Date Drawn - 11/21/12

Drawn By - SMR

Revised - 12/07/12 - ISSUED FOR BID

Project # 3348

Scale - As Noted

Sheet Number - M3.3

HARBOR TERRACE
 BOILER REPLACEMENT
 284 Danforth Street, Portland, ME
 Mechanical Details