

Job Name:	Date:
System Reference:	



Outdoor Unit: MXZ-4C36NAHZ

ACCESSORIES

- Three-port Branch Box (PAC-MKA30BC)
- Five-port Branch Box (PAC-MKA50BC)
- Distribution Pipe for Flare Connection (MSDD-50AR; necessary for installing two branch boxes)
- Distribution Pipe for Brazed Connection (MSDD-50BR; necessary for installing two branch boxes)
- 3/8" x 1/2" Port Adapter (MAC-A454JP)
- 1/2" x 3/8" Port Adapter (MAC-A455JP)
- 1/2" x 5/8" Port Adapter (MAC-A456JP)
- 1/4" x 3/8" Port Adapter (PAC-493PI)
- 3/8" x 5/8" Port Adapter (PAC-SG76RJ)
- Airflow Guide (PAC-SH96SG-E)

(For data on specific indoor units, see the MXZ-C Technical and Service Manual.)

Specifications		Model Name	
Unit Type		MXZ-4C36NAHZ	
Cooling* (Non-ducted / Ducted)	Rated Capacity	Btu/h	36,000 / 36,000
	Capacity Range	Btu/h	6,000 - 36,000
	Rated Total Input	W	2,570 / 3,180
Heating at 47°F* (Non-ducted / Ducted)	Rated Capacity	Btu/h	45,000 / 45,000
	Capacity Range	Btu/h	7,200 - 45,000
	Rated Total Input	W	3,340 / 4,250
Heating at 17°F* (Non-ducted/Ducted)	Rated Capacity	Btu/h	34,000 / 36,000
	Maximum Capacity	Btu/h	45,000 / 45,000
	Rated Total Input	W	3,500 / 4,590
Heating at 5°F*	Maximum Capacity	Btu/h	45,000
Electrical Requirements	Power Supply	Voltage, Phase, Hertz	208 / 230V, 1-Phase, 60 Hz
	Recommended Fuse/Breaker Size	A	50
	MCA	A	42
Voltage	Indoor - Outdoor S1-S2	V	AC 208 / 230
	Indoor - Outdoor S2-S3	V	DC ±24
Compressor		Hermetic	
Fan Motor (ECM)		F.L.A.	0.4+0.4
Sound Pressure Level	Cooling	dB(A)	49
	Heating	dB(A)	53
External Dimensions (H x W x D)		In / mm	52-11/16 x 41-11/32 x 13+1 1338 x 1050 x 330+25
Net Weight		Lbs / kg	276 / 125
External Finish		Munsell No. 3Y 7.8/11	
Refrigerant Pipe Size O.D. — Eight Ports	Liquid (High Pressure)	In / mm	3/8 / 9.52
	Gas (Low Pressure)	In / mm	5/8 / 15.88
Max. Refrigerant Line Length		Ft / m	492 (150)
Max. Piping Length between outdoor unit and branch boxes		Ft / m	180 (55)
Max. Piping Length after branch box		Ft / m	82 (25)
Max. Total Piping Length between branch boxes and indoor units		Ft / m	311 (95)
Max. Refrigerant Pipe Height Difference	If IDU is Above ODU	Ft / m	131 (40)
	If IDU is Below ODU	Ft / m	164 (50)
Connection Method		Flared/Flared	
Refrigerant		R410A	

* Rating Conditions per AHRI Standard:

Cooling | Indoor: 80° F (27° C) DB / 67° F (19° C) WB
Cooling | Outdoor: 95° F (35° C) DB / 75° F (24° C) WB

Heating at 47° F | Indoor: 70° F (21° C) DB
Heating at 47° F | Outdoor: 47° F (8° C) DB / 43° F (6° C) WB

Heating at 17° F | Indoor: 70° F (21° C) DB
Heating at 17° F | Outdoor: 17° F (-8° C) DB / 15° F (-9° C) WB

SPECIFICATIONS: MXZ-4C36NAHZ, contd.

OPERATING RANGE:

	Outdoor
Cooling	D.B 23 to 115°F [D.B.-5 to 46°C]*1
Heating	W.B. -13 to 59° F [W.B. -25 to 15° C]

*1. D.B. 5 to 115° F [D.B. -15 to 46° C], when an optional Air Outlet Guide is installed.

ENERGY EFFICIENCIES:

Indoor Unit Type	SEER	EER	HSPF	COP @ 47°F	COP @ 17°F
Non-ducted	19.10	14.00	11.30	3.95	2.85
Ducted and Non-ducted	17.45	12.67	10.70	3.53	2.58
Ducted	15.80	11.30	10.10	3.10	2.30

NOTES:

- Minimum of two Indoor Units must be connected to the MXZ-4C36NAHZ.
- Minimum installed capacity cannot be less than 12,000 Btu/h.
- Total connected capacity must not exceed 130% of outdoor unit capacity.
- System can operate with only one Indoor Unit turned on.
- Information provided at 208/230V.
- For Reference:
 - MXZ-C Technical & Service Manual for detailed specifications and additional information per Indoor Unit Combination.
 - MXZ Series Multi-Zone Indoor/Outdoor Combination Table for allowed unit combinations.

MVZ CONNECTION RULES:

- Up to 2 MVZ's may be connected to this system*.
- When 2 MVZ's are connected, no additional indoor units can be used*.
- When 1 MVZ is connected, additional indoor units can be connected.
- When 1 MVZ is connected, total connected capacity must not exceed 130%.

*No limitation to the number of units connected when the SPTB1 accessory is used, total connected capacity must not exceed 130% (refer to SPTB1 documentation for more information).

Notes:

MXZ-4C36NAHZ SYSTEM DESIGN

Outdoor unit		MXZ-4C36NAHZ		
		4HP		
		Rated capacity (kBTU/h)	Cooling	36
			Heating	45
		Refrigerant	R410A	
Connectable indoor unit	Capacity		Type 06 to Type 36	
	Caution: The indoor unit which rated capacity exceeds 36 kBTU/h (Type 36) can NOT be connected.			
	Number of units		2 to 4 units	
Total system wide capacity		33 to 130% of outdoor unit capacity (12 to 46.8 kBTU/h)		
Connectable branch box	Number of units		1 or 2 units	



Connectable indoor unit lineups (Heat pump inverter type)			Capacity class [kBTU/h]						
Model type	Model name	Capacity class [kBTU/h]							
		06	09	12	15	18	24	30	36
Wall mounted	Deluxe	MSZ-FE09/12/18NA	●	●		●			
		MSZ-FH09/12/15NA	●	●	●				
	Standard	MSZ-GE06/09/12/15/18/24NA	●	●	●	●	●		
Ceiling concealed	Low static pressure	SEZ-KD09/12/15/18NA		●	●	●			
	Middle static pressure	PEAD-A24/30/36AA4					●	●	●
4-way ceiling cassette	2 by 2 type	SLZ-KA09/12/15NA		●	●	●			
	Standard	PLA-A12/18/24/30/36BA4			●		●	●	●
Floor standing		MFZ-KA09/12/18NA		●	●		●		
Multi-position		MVZ-A12/18/24/30/36AA4			●		●	●	●

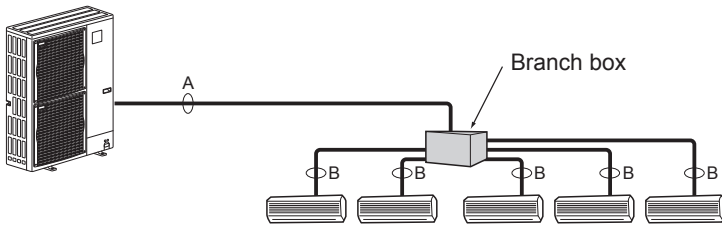


Branch box	PAC-MKA50BC	PAC-MKA30BC
Number of branches (Indoor unit that can be connected)	5 branches (MAX. 5 units)	3 branches (MAX. 3 units)

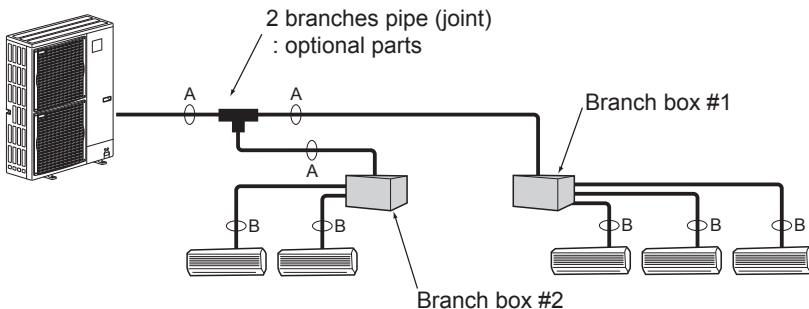
Note: A maximum of 2 branch boxes can be connected to 1 outdoor unit.

Branch Box Combinations	
Three-port	Five-port
1	0
0	1
1	1
2	0
0	2 (Up to 8 IDU)

- If Using One Branch Box
Flare connection employed (No brazing)



- If Using Two Branch Boxes



- Installation procedure (2 branches pipe (joint))
Refer to the installation manuals of MSDD-50AR-E and MSDD-50BR-E.

Piping connection size

	A	B
Liquid	φ9.52 mm (3/8 inch)	The piping connection size differs according to the type and capacity of indoor units. Match the piping connection size of branch box with indoor unit. If the piping connection size of branch box does not match the piping connection size of indoor unit, use optional different-diameter (deformed) joints to the branch box side. (Connect deformed joint directly to the branch box side.)
Gas	φ15.88 mm (5/8 inch)	

MXZ-4C36NAHZ COOLING AND HEATING CAPACITY AND CHARACTERISTICS

1. Method for obtaining system cooling and heating capacity:

To obtain the system cooling and heating capacity and the electrical characteristics of the outdoor unit, first add up the ratings of all the indoor units connected to the outdoor unit (see table below). For Standard Capacity Diagram, please refer to the MXZ-C Technical & Service Manual.

(1) Capacity of indoor unit

	Model Number for indoor unit	Model 06	Model 09	Model 12	Model 15	Model 18	Model 24	Model 30	Model 36
M series	Model Capacity [kBtu/h]	6.0	9.0	12.0	14.0* ¹ 15.0* ²	17.2* ³ 18.0* ⁴	22.5	—	—
P series		—	—	12.0	—	18.0	24.0	30.0	35.0
SEZ		—	8.1	11.5	14.1	17.2	—	—	—
SLZ		—	8.4	11.1	15.0	—	—	—	—
MVZ		—	—	12.0	—	18.0	24.0	30.0	36.0

*1 The value is for MSZ-GE15NA.

*2 The value is for MSZ-FH15NA.

*3 The value is for MSZ-GE/FH18NA.

*4 The value is for MSZ-FE18NA or MFZ-KA18NA.

(2) Sample calculation

1 System assembled from indoor and outdoor unit (in this example the total capacity of the indoor units is greater than that of the outdoor unit)

- Outdoor unit MXZ-5C42NAHZ
- Indoor unit MSZ-GE09NA × 2 + MSZ-FH15NA × 2

2 According to the conditions in 1, the total capacity of the indoor unit will be: 9.0 × 2 + 15.0 × 2 = 48.0

3 The following figures are obtained from the 16.8 total capacity of indoor units, referring the standard capacity diagram in "4-3-3. MXZ-5C42NAHZ <cooling>" and "4-3-4. MXZ-5C42NAHZ <heating>".

Capacity (kBTU/h)		Outdoor unit power consumption (kW)		Outdoor unit current (A)/ 230 V	
Cooling	Heating	Cooling	Heating	Cooling	Heating
A 42.0	B 48.0	3.46	4.37	15.26	19.31

2. Method for obtaining the heating and cooling capacity of an indoor unit:

(1) The capacity of each indoor unit (kW) = the capacity A (or B) × $\frac{\text{model capacity}}{\text{total model capacity of all indoor units}}$

(2) Sample calculation (using the system described above in 4-1-1. (2)):

During cooling:

- The total model capacity of the indoor unit is:
9.0 × 2 + 15.0 × 2 = 48.0 kBTU/h
Therefore, the capacity of MSZ-GE09NA and MSZ-FH15NA will be calculated as follows by using the formula in 4-1-2. (1):

$$\text{Model 09} = 42.0 \times \frac{9.0}{48.0} = 7.88 \text{ kBTU/h}$$

$$\text{Model 15} = 42.0 \times \frac{15.0}{48.0} = 13.13 \text{ kBTU/h}$$

During heating:

- The total model capacity of indoor unit is:
10.9 × 2 + 18.0 × 2 = 57.8 kBTU/h
Therefore, the capacity of MSZ-GE09NA and MSZ-FH15NA will be calculated as follows by using the formula in 4-1-2. (1):

$$\text{Model 25} = 48.0 \times \frac{10.9}{57.8} = 9.05 \text{ kBTU/h}$$

$$\text{Model 50} = 48.0 \times \frac{18.0}{57.8} = 14.95 \text{ kBTU/h}$$

MXZ-4C36NAHZ OPERATIONAL PERFORMANCE

Operational Performance for Indoor Unit Combinations (Unit A + Unit B + Unit C + Unit D)	Cooling Capacity Range (Btu/h)				Power Usage Range (W)	Current (208/230V)
	Heating Capacity Range (Btu/h)					
	Unit A	Unit B	Unit C	Unit D		
6	6000	0	0	0	600	2.5 / 2.9
	7100	0	0	0	601	2.8 / 3.1
9	9000	0	0	0	700	3 / 3.4
	10900	0	0	0	909	4.2 / 4.5
12	12000	0	0	0	800	3.4 / 3.9
	14700	0	0	0	1217	5.5 / 6
15	15000	0	0	0	988	4.3 / 4.8
	18500	0	0	0	1526	6.8 / 7.5
18	18000	0	0	0	1175	5.1 / 5.8
	22300	0	0	0	1834	8.2 / 8.9
24	24000	0	0	0	1551	6.9 / 7.6
	29900	0	0	0	2450	10.9 / 11.8
30	30000	0	0	0	2446	10.9 / 12
	37500	0	0	0	3474	15.5 / 16.9
36	36000	0	0	0	3339	14.8 / 16.5
	45000	0	0	0	4500	20 / 22
6 + 6	6000	6000	0	0	800	3.4 / 3.9
	7350	7350	0	0	1217	5.5 / 6
6 + 9	6000	9000	0	0	988	4.3 / 4.8
	7400	11100	0	0	1526	6.8 / 7.5
6 + 12	6000	12000	0	0	1175	5.1 / 5.8
	7433	14867	0	0	1834	8.2 / 8.9
6 + 15	6000	15000	0	0	1363	6 / 6.7
	7457	18643	0	0	2143	9.5 / 10.4
6 + 18	6000	18000	0	0	1551	6.9 / 7.6
	7475	22425	0	0	2450	10.9 / 11.8
6 + 24	6000	24000	0	0	2446	10.9 / 12
	7500	30000	0	0	3474	15.5 / 16.9
6 + 30	6000	30000	0	0	3339	14.8 / 16.5
	7500	37500	0	0	4500	20 / 22
6 + 36	5143	30857	0	0	2820	12.4 / 13.8
	6429	38571	0	0	4200	18.7 / 18.3
9 + 9	9000	9000	0	0	1175	5.1 / 5.8
	11150	11150	0	0	1834	8.2 / 8.9
9 + 12	9000	12000	0	0	1363	6 / 6.7
	11186	14914	0	0	2143	9.5 / 10.4
9 + 15	9000	15000	0	0	1551	6.9 / 7.6
	11212	18688	0	0	2450	10.9 / 11.8
9 + 18	9000	18000	0	0	1999	8.9 / 9.8
	11233	22467	0	0	2962	13.2 / 14.4
9 + 24	9000	24000	0	0	2894	12.9 / 14.2
	11264	30036	0	0	3987	17.8 / 19.5
9 + 30	8308	27692	0	0	3079	13.6 / 15.2
	10385	34615	0	0	4350	19.4 / 20.2
9 + 36	7200	28800	0	0	2670	11.8 / 13.1
	9000	36000	0	0	4050	18.1 / 16.5
12 + 12	12000	12000	0	0	1551	6.9 / 7.6
	14950	14950	0	0	2450	10.9 / 11.8
12 + 15	12000	15000	0	0	1999	8.9 / 9.8
	14978	18722	0	0	2962	13.2 / 14.4
12 + 18	12000	18000	0	0	2446	10.9 / 12
	15000	22500	0	0	3474	15.5 / 16.9
12 + 24	12000	24000	0	0	3339	14.8 / 16.5
	15000	30000	0	0	4500	20 / 22
12 + 30	10286	25714	0	0	2820	12.4 / 13.8
	12857	32143	0	0	4200	18.7 / 18.3
15 + 15	15000	15000	0	0	2446	10.9 / 12
	18750	18750	0	0	3474	15.5 / 16.9
15 + 18	15000	18000	0	0	2894	12.9 / 14.2
	18773	22527	0	0	3987	17.8 / 19.5

MXZ-4C36NAHZ OPERATIONAL PERFORMANCE, contd.

Operational Performance for Indoor Unit Combinations (Unit A + Unit B + Unit C+ Unit D)	Cooling Capacity Range (Btu/h)				Power Usage Range (W)	Current (208/230V)
	Heating Capacity Range (Btu/h)					
	Unit A	Unit B	Unit C	Unit D		
15 + 24	13846	22154	0	0	3079	13.6 / 15.2
	17308	27692	0	0	4350	19.4 / 20.2
15 + 30	12000	24000	0	0	2670	11.8 / 13.1
	15000	30000	0	0	4050	18.1 / 16.5
18 + 18	18000	18000	0	0	3339	14.8 / 16.5
	22500	22500	0	0	4500	20 / 22
18 + 24	15429	20571	0	0	2820	12.4 / 13.8
	19286	25714	0	0	4200	18.7 / 18.3
6 + 6 + 6	6000	6000	6000	0	1175	5.1 / 5.8
	7433	7433	7433	0	1834	8.2 / 8.9
6 + 6 + 9	6000	6000	9000	0	1363	6 / 6.7
	7457	7457	11186	0	2143	9.5 / 10.4
6 + 6 + 12	6000	6000	12000	0	1551	6.9 / 7.6
	7475	7475	14950	0	2450	10.9 / 11.8
6 + 6 + 15	6000	6000	15000	0	1999	8.9 / 9.8
	7489	7489	18722	0	2962	13.2 / 14.4
6 + 6 + 18	6000	6000	18000	0	2446	10.9 / 12
	7500	7500	22500	0	3474	15.5 / 16.9
6 + 6 + 24	6000	6000	24000	0	3339	14.8 / 16.5
	7500	7500	30000	0	4500	20 / 22
6 + 6 + 30	5143	5143	25714	0	2820	12.4 / 13.8
	6429	6429	32143	0	4200	18.7 / 18.3
6 + 9 + 9	6000	9000	9000	0	1551	6.9 / 7.6
	7475	11212	11212	0	2450	10.9 / 11.8
6 + 9 + 12	6000	9000	12000	0	1999	8.9 / 9.8
	7489	11233	14978	0	2962	13.2 / 14.4
6 + 9 + 15	6000	9000	15000	0	2446	10.9 / 12
	7500	11250	18750	0	3474	15.5 / 16.9
6 + 9 + 18	6000	9000	18000	0	2894	12.9 / 14.2
	7509	11264	22527	0	3987	17.8 / 19.5
6 + 9 + 24	5538	8308	22154	0	3079	13.6 / 15.2
	6923	10385	27692	0	4350	19.4 / 20.2
6 + 9 + 30	4800	7200	24000	0	2670	11.8 / 13.1
	6000	9000	30000	0	4050	18.1 / 16.5
6 + 12 + 12	6000	12000	12000	0	2446	10.9 / 12
	7500	15000	15000	0	3474	15.5 / 16.9
6 + 12 + 15	6000	12000	15000	0	2894	12.9 / 14.2
	7509	15018	18773	0	3987	17.8 / 19.5
6 + 12 + 18	6000	12000	18000	0	3339	14.8 / 16.5
	7500	15000	22500	0	4500	20 / 22
6 + 12 + 24	5143	10286	20571	0	2820	12.4 / 13.8
	6429	12857	25714	0	4200	18.7 / 18.3
6 + 15 + 15	6000	15000	15000	0	3339	14.8 / 16.5
	7500	18750	18750	0	4500	20 / 22
6 + 15 + 18	5538	13846	16615	0	3079	13.6 / 15.2
	6923	17308	20769	0	4350	19.4 / 20.2
6 + 15 + 24	4800	12000	19200	0	2670	11.8 / 13.1
	6000	15000	24000	0	4050	18.1 / 16.5
6 + 18 + 18	5143	15429	15429	0	2820	12.4 / 13.8
	6429	19286	19286	0	4200	18.7 / 18.3
9 + 9 + 9	9000	9000	9000	0	1999	8.9 / 9.8
	11233	11233	11233	0	2962	13.2 / 14.4
9 + 9 + 12	9000	9000	12000	0	2446	10.9 / 12
	11250	11250	15000	0	3474	15.5 / 16.9
9 + 9 + 15	9000	9000	15000	0	2894	12.9 / 14.2
	11264	11264	18773	0	3987	17.8 / 19.5
9 + 9 + 18	9000	9000	18000	0	3339	14.8 / 16.5
	11250	11250	22500	0	4500	20 / 22
9 + 9 + 24	7714	7714	20571	0	2820	12.4 / 13.8
	9643	9643	25714	0	4200	18.7 / 18.3

MXZ-4C36NAHZ OPERATIONAL PERFORMANCE, contd.

Operational Performance for Indoor Unit Combinations (Unit A + Unit B + Unit C+ Unit D)	Cooling Capacity Range (Btu/h)				Power Usage Range (W)	Current (208/230V)
	Heating Capacity Range (Btu/h)					
	Unit A	Unit B	Unit C	Unit D		
9 + 12 + 12	9000	12000	12000	0	2894	12.9 / 14.2
	11264	15018	15018	0	3987	17.8 / 19.5
9 + 12 + 15	9000	12000	15000	0	3339	14.8 / 16.5
	11250	15000	18750	0	4500	20 / 22
9 + 12 + 18	8308	11077	16615	0	3079	13.6 / 15.2
	10385	13846	20769	0	4350	19.4 / 20.2
9 + 12 + 24	7200	9600	19200	0	2670	11.8 / 13.1
	9000	12000	24000	0	4050	18.1 / 16.5
9 + 15 + 15	8308	13846	13846	0	3079	13.6 / 15.2
	10385	17308	17308	0	4350	19.4 / 20.2
9 + 15 + 18	7714	12857	15429	0	2820	12.4 / 13.8
	9643	16071	19286	0	4200	18.7 / 18.3
9 + 18 + 18	7200	14400	14400	0	2670	11.8 / 13.1
	9000	18000	18000	0	4050	18.1 / 16.5
12 + 12 + 12	12000	12000	12000	0	3339	14.8 / 16.5
	15000	15000	15000	0	4500	20 / 22
12 + 12 + 15	11077	11077	13846	0	3079	13.6 / 15.2
	13846	13846	17308	0	4350	19.4 / 20.2
12 + 12 + 18	10286	10286	15429	0	2820	12.4 / 13.8
	12857	12857	19286	0	4200	18.7 / 18.3
12 + 15 + 15	10286	12857	12857	0	2820	12.4 / 13.8
	12857	16071	16071	0	4200	18.7 / 18.3
12 + 15 + 18	9600	12000	14400	0	2670	11.8 / 13.1
	12000	15000	18000	0	4050	18.1 / 16.5
15 + 15 + 15	12000	12000	12000	0	2670	11.8 / 13.1
	15000	15000	15000	0	4050	18.1 / 16.5
6 + 6 + 6 + 6	6000	6000	6000	6000	1551	6.9 / 7.6
	7475	7475	7475	7475	2450	10.9 / 11.8
6 + 6 + 6 + 9	6000	6000	6000	9000	1999	8.9 / 9.8
	7489	7489	7489	11233	2962	13.2 / 14.4
6 + 6 + 6 + 12	6000	6000	6000	12000	2446	10.9 / 12
	7500	7500	7500	15000	3474	15.5 / 16.9
6 + 6 + 6 + 15	6000	6000	6000	15000	2894	12.9 / 14.2
	7509	7509	7509	18773	3987	17.8 / 19.5
6 + 6 + 6 + 18	6000	6000	6000	18000	3339	14.8 / 16.5
	7500	7500	7500	22500	4500	20 / 22
6 + 6 + 6 + 24	5143	5143	5143	20571	2820	12.4 / 13.8
	6429	6429	6429	25714	4200	18.7 / 18.3
6 + 6 + 9 + 9	6000	6000	9000	9000	2446	10.9 / 12
	7500	7500	11250	11250	3474	15.5 / 16.9
6 + 6 + 9 + 12	6000	6000	9000	12000	2894	12.9 / 14.2
	7509	7509	11264	15018	3987	17.8 / 19.5
6 + 6 + 9 + 15	6000	6000	9000	15000	3339	14.8 / 16.5
	7500	7500	11250	18750	4500	20 / 22
6 + 6 + 9 + 18	5538	5538	8308	16615	3079	13.6 / 15.2
	6923	6923	10385	20769	4350	19.4 / 20.2
6 + 6 + 9 + 24	4800	4800	7200	19200	2670	11.8 / 13.1
	6000	6000	9000	24000	4050	18.1 / 16.5
6 + 6 + 12 + 12	6000	6000	12000	12000	3339	14.8 / 16.5
	7500	7500	15000	15000	4500	20 / 22
6 + 6 + 12 + 15	5538	5538	11077	13846	3079	13.6 / 15.2
	6923	6923	13846	17308	4350	19.4 / 20.2
6 + 6 + 12 + 18	5143	5143	10286	15429	2820	12.4 / 13.8
	6429	6429	12857	19286	4200	18.7 / 18.3
6 + 6 + 15 + 15	5143	5143	12857	12857	2820	12.4 / 13.8
	6429	6429	16071	16071	4200	18.7 / 18.3
6 + 6 + 15 + 18	4800	4800	12000	14400	2670	11.8 / 13.1
	6000	6000	15000	18000	4050	18.1 / 16.5
6 + 9 + 9 + 9	6000	9000	9000	9000	2894	12.9 / 14.2
	7509	11264	11264	11264	3987	17.8 / 19.5

MXZ-4C36NAHZ OPERATIONAL PERFORMANCE, contd.

Operational Performance for Indoor Unit Combinations (Unit A + Unit B + Unit C+ Unit D)	Cooling Capacity Range (Btu/h)				Power Usage Range (W)	Current (208/230V)
	Heating Capacity Range (Btu/h)					
	Unit A	Unit B	Unit C	Unit D		
6 + 9 + 9 + 12	6000	9000	9000	12000	3339	14.8 / 16.5
	7500	11250	11250	15000	4500	20 / 22
6 + 9 + 9 + 15	5538	8308	8308	13846	3079	13.6 / 15.2
	6923	10385	10385	17308	4350	19.4 / 20.2
6 + 9 + 9 + 18	5143	7714	7714	15429	2820	12.4 / 13.8
	6429	9643	9643	19286	4200	18.7 / 18.3
6 + 9 + 12 + 12	5538	8308	11077	11077	3079	13.6 / 15.2
	6923	10385	13846	13846	4350	19.4 / 20.2
6 + 9 + 12 + 15	5143	7714	10286	12857	2820	12.4 / 13.8
	6429	9643	12857	16071	4200	18.7 / 18.3
6 + 9 + 12 + 18	4800	7200	9600	14400	2670	11.8 / 13.1
	6000	9000	12000	18000	4050	18.1 / 16.5
6 + 9 + 15 + 15	4800	7200	12000	12000	2670	11.8 / 13.1
	6000	9000	15000	15000	4050	18.1 / 16.5
6 + 12 + 12 + 12	5143	10286	10286	10286	2820	12.4 / 13.8
	6429	12857	12857	12857	4200	18.7 / 18.3
6 + 12 + 12 + 15	4800	9600	9600	12000	2670	11.8 / 13.1
	6000	12000	12000	15000	4050	18.1 / 16.5
9 + 9 + 9 + 9	9000	9000	9000	9000	3339	14.8 / 16.5
	11250	11250	11250	11250	4500	20 / 22
9 + 9 + 9 + 12	8308	8308	8308	11077	3079	13.6 / 15.2
	10385	10385	10385	13846	4350	19.4 / 20.2
9 + 9 + 9 + 15	7714	7714	7714	12857	2820	12.4 / 13.8
	9643	9643	9643	16071	4200	18.7 / 18.3
9 + 9 + 9 + 18	7200	7200	7200	14400	2670	11.8 / 13.1
	9000	9000	9000	18000	4050	18.1 / 16.5
9 + 9 + 12 + 12	7714	7714	10286	10286	2820	12.4 / 13.8
	9643	9643	12857	12857	4200	18.7 / 18.3
9 + 9 + 12 + 15	7200	7200	9600	12000	2670	11.8 / 13.1
	9000	9000	12000	15000	4050	18.1 / 16.5
9 + 12 + 12 + 12	7200	9600	9600	9600	2670	11.8 / 13.1
	9000	12000	12000	12000	4050	18.1 / 16.5

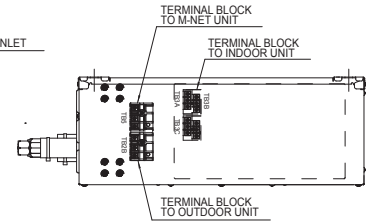
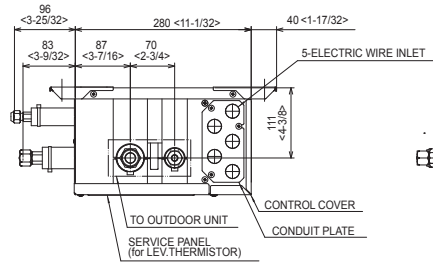
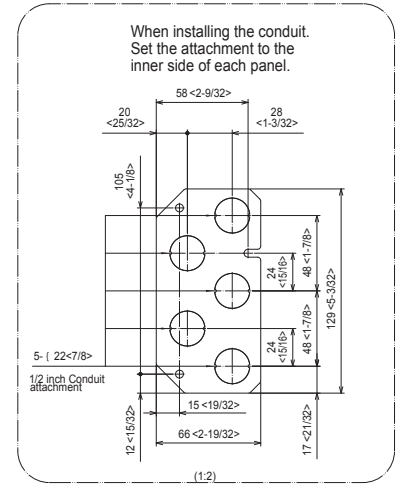
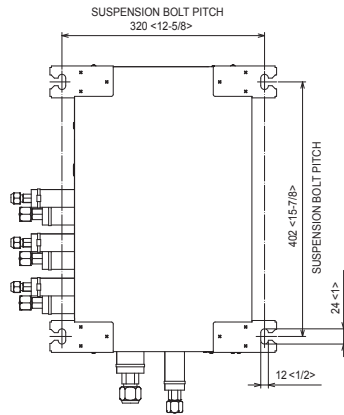
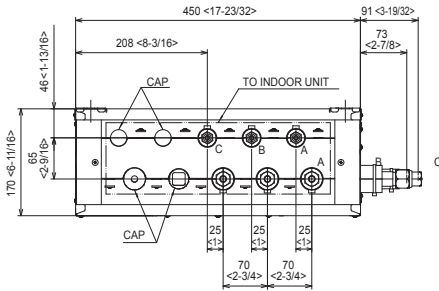
DIMENSIONS: PAC-MKA30BC AND PAC-MKA50BC BRANCH BOXES

PAC-MKA30BC

Unit: mm <in>

SUSPENSION BOLT : W3/8(M10)
REFRIGERANT PIPE FLARED CONNECTION

	A	B	C		TO OUTDOOR UNIT
LIQUID PIPE	1/4F	1/4F	1/4F		3/8F
GAS PIPE	3/8F	3/8F	3/8F		5/8F

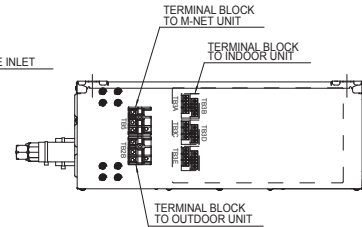
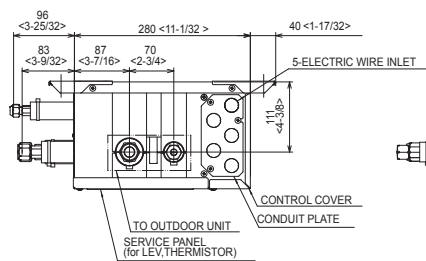
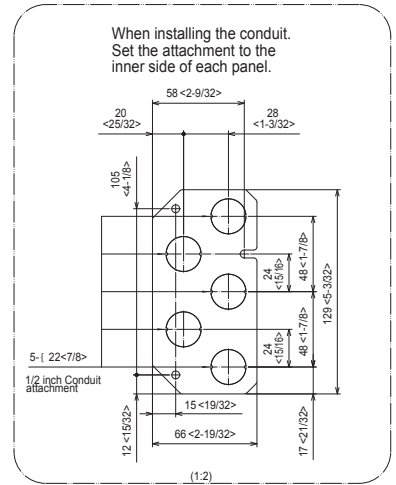
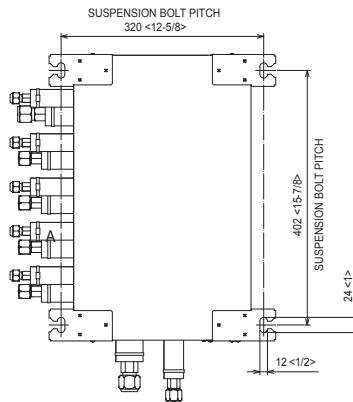
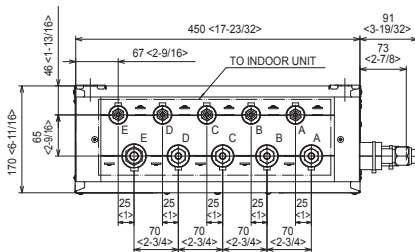


PAC-MKA50BC

Unit: mm <in>

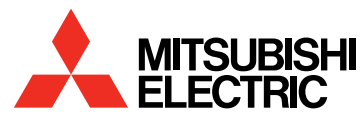
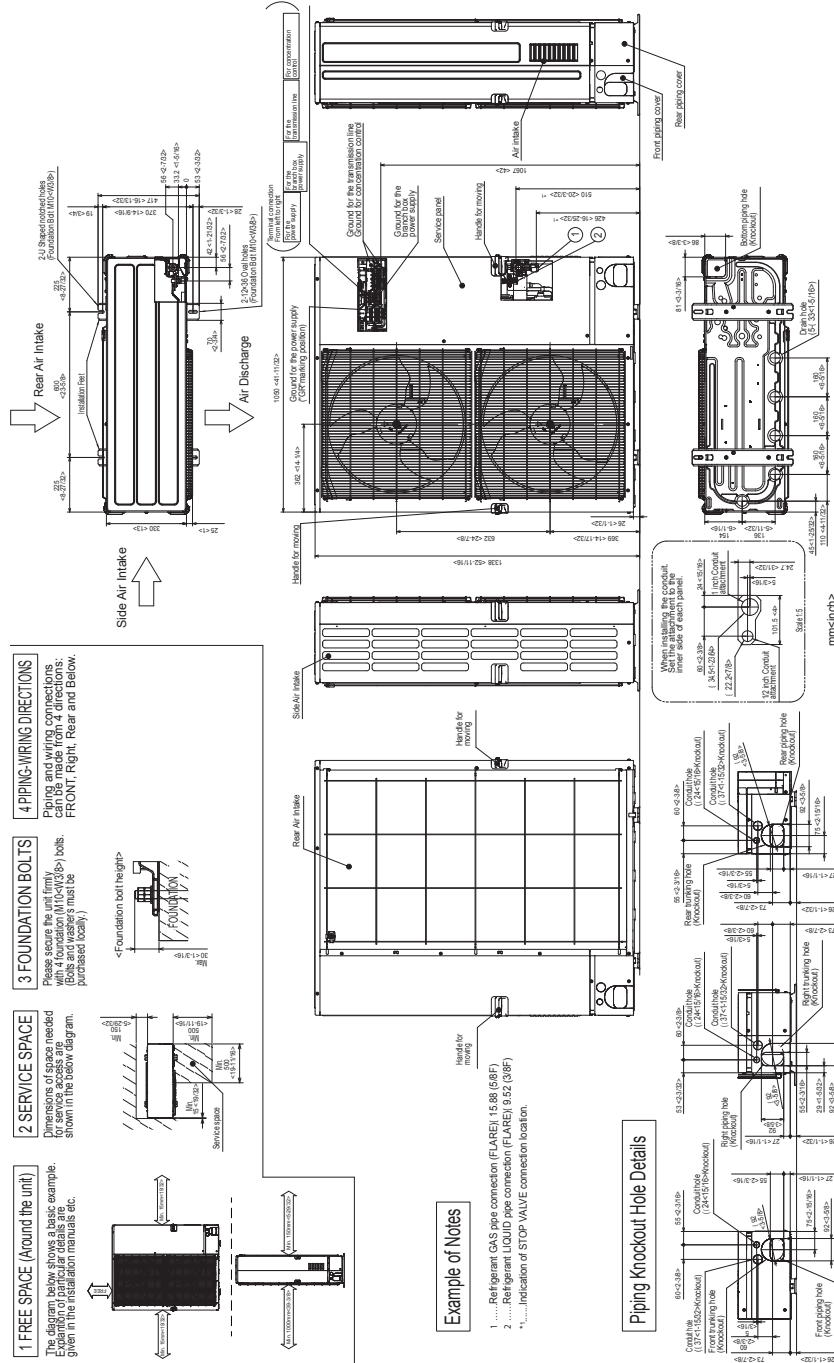
SUSPENSION BOLT : W3/8(M10)
REFRIGERANT PIPE FLARED CONNECTION

	A	B	C	D	E	TO OUTDOOR UNIT
LIQUID PIPE	1/4F	1/4F	1/4F	1/4F	1/4F	3/8F
GAS PIPE	3/8F	3/8F	3/8F	3/8F	1/2F	5/8F



DIMENSIONS: MXZ-4C36NAHZ

Unit: mm <in>



COOLING & HEATING

1340 Satellite Boulevard, Suwanee, GA 30024
Toll Free: 800-433-4822 www.mehvac.com

FORM# MXZ-4C36NAHZ for Multiple Indoor Unit Styles - 201605

Specifications are subject to change without notice.



© 2016 Mitsubishi Electric US, Inc.