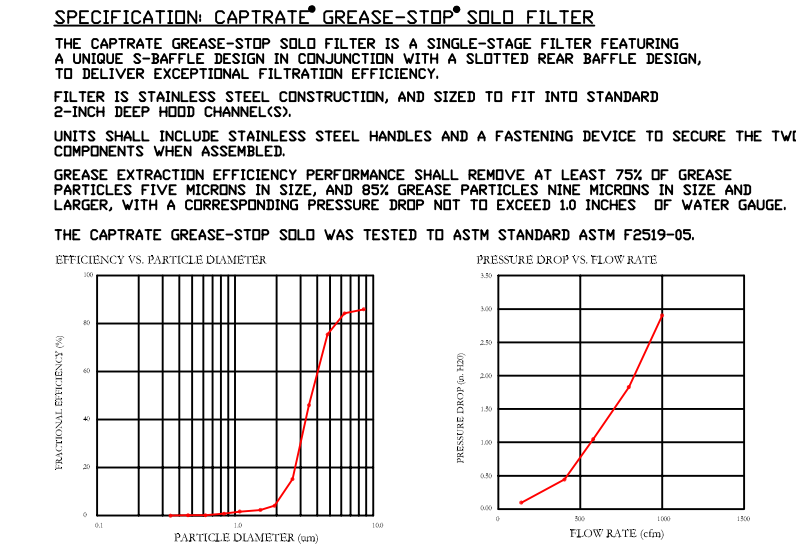


HOOD INFORMATION - Job#296659										
HOOD NO.	TAG	MODEL	LENGTH	MAX. COORDIN. TEMP.	TOTAL EXH. CFM	EXH. CFM	WIDTH	HEIGHT	SEA	CFM
1		5424	14'	300	1500	1200	12"	4'	1500	1200

HOOD INFORMATION										
HOOD NO.	TAG	TYPE	HTY	HEIGHT	LENGTH	WIDTH	EFFICIENCY # 9	HTY	TYPE	WIRE GAUGE
1		Captivate Solo Filter	30	20"	14'	800	See Filter Spec.	4	Screw In Compact	NO

HOOD OPTIONS									
HOOD NO.	TAG	OPTION							
1		FIELD WRAPPER 1800" High Front, Left, Right							
		BACKPLASH 800" High x 1600" Long x 30" Vertical							
		INSULATION FOR TOP OF HOOD							
		INSULATION FOR BACK OF HOOD							
		RIGHT VERTICAL END PANEL 27" Top Width, 21" Bottom Width, 80" High Insulated 430							
		LEFT VERTICAL END PANEL 27" Top Width, 21" Bottom Width, 80" High Insulated 430							

PERFORATED SUPPLY PLenum(S)										
HOOD NO.	TAG	POS.	LENGTH	WIDTH	HEIGHT	TYPE	WIDTH	LENGTH	AREA	CFM
1		Front	14'	16"	6"	MA	12"	28"	802	8,207



CUSTOMER APPROVAL TO MANUFACTURE:

Approved as Noted

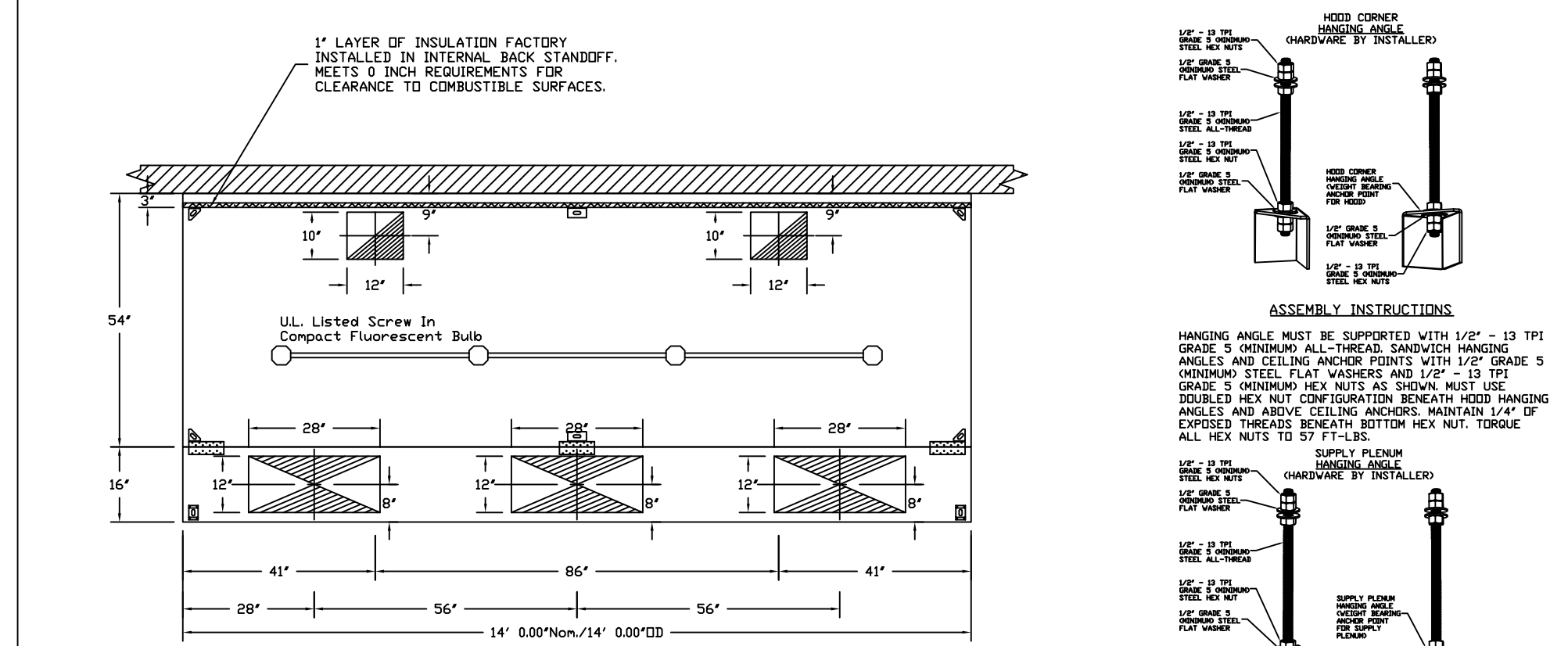
Approved with NO Exception Taken

Revised and Resubmit

SIGNATURE: _____ DATE: _____

CAPTIVEAIRE
 JOB# Little Giant r/s
 LOCATION PORTLAND, ME, 04102
 DATE 3/27/2017 JOB # 2966659
 DWG # 1 DRAWN BY BFC-21
 REV. SCALE 3/8" = 1'-0"

HOOD SYSTEM INFORMATION



PLAN VIEW - Hood #1
14' 0.00' LONG 5424ND-2-PSP-F
NOTE: Additional hanging angles provided for hoods 12' and longer.

CUSTOMER APPROVAL TO MANUFACTURE:

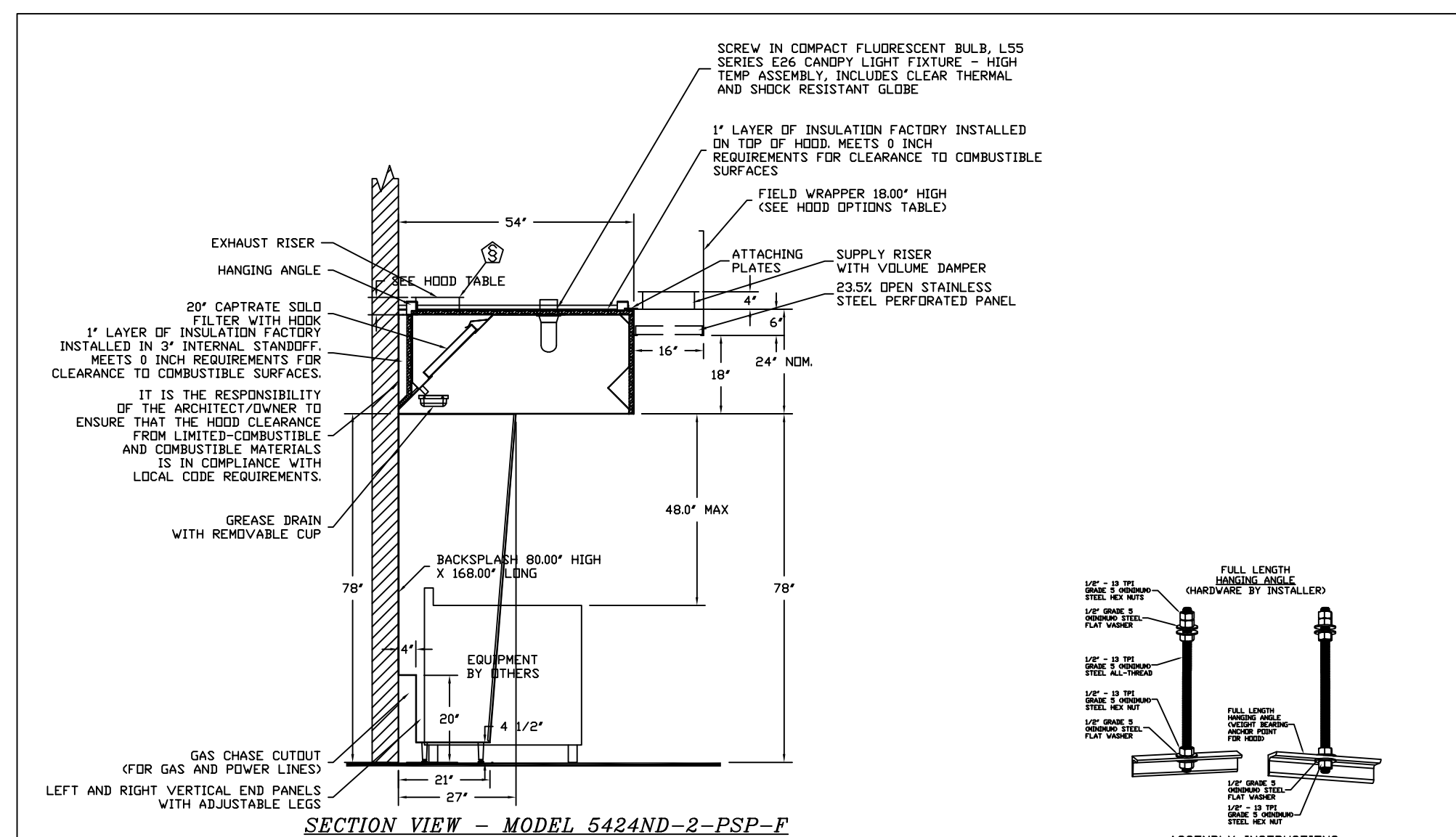
Approved as Noted

Approved with NO Exception Taken

Revised and Resubmit

SIGNATURE: _____ DATE: _____

HOOD PLAN VIEW



SECTION VIEW - MODEL 5424ND-2-PSP-F HOOD - #1

CUSTOMER APPROVAL TO MANUFACTURE:

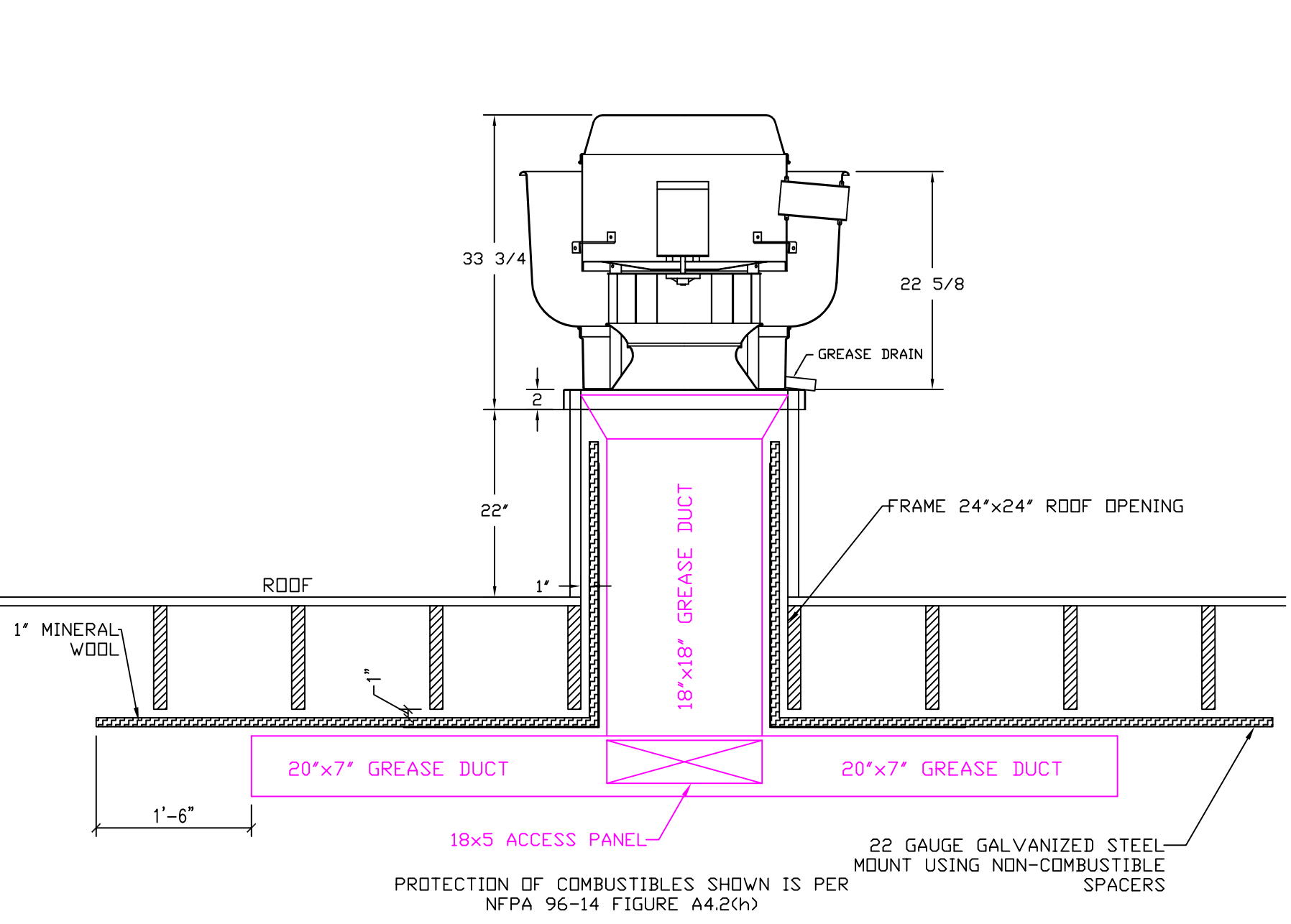
Approved as Noted

Approved with NO Exception Taken

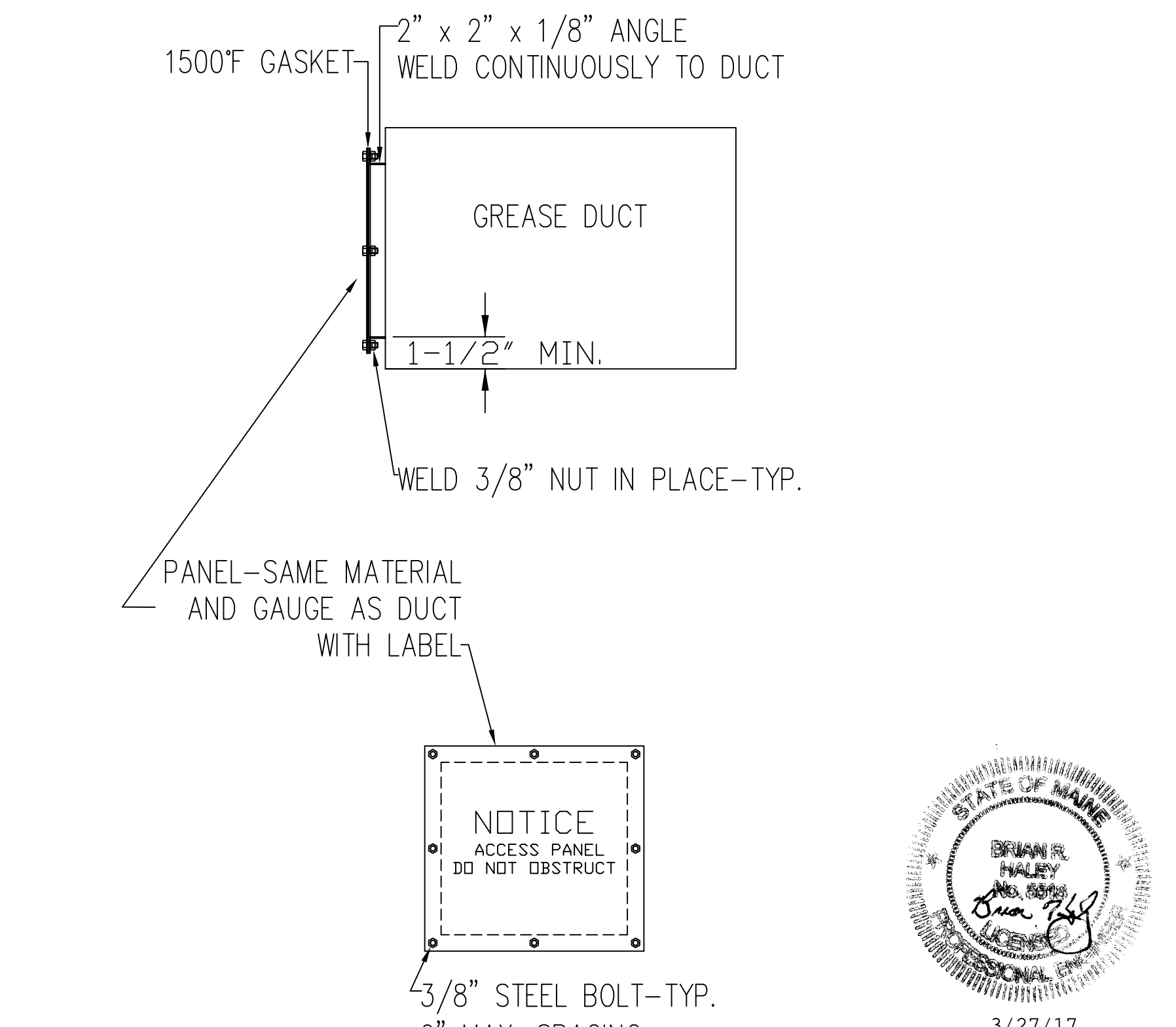
Revised and Resubmit

SIGNATURE: _____ DATE: _____

HOOD ELEVATION



EXHAUST DUCTWORK ELEVATION
COMBUSTIBLES PROTECTION



GREASE DUCTWORK
ACCESS PANEL DETAIL

EXHAUST FAN INFORMATION - Job#296659										
FAN UNIT NO.	TAG	FAN UNIT MODEL #	CFM	ESP	HP	SHF	VOL. FLA	WEIGHT (LBS.)	ZONE	
1		3009FA	300	1500	1204	3.000	1.204	3	208	95

GAS FIRED MAKE-UP AIR UNITS									
UNIT NO.	TAG	MODEL	INPUT BTUS	TEMP. RISE	REQUIRES INPUT GAS PRESSURE	GAS TYPE			
2		2407G	22054	85 deg F	7 in. w.c. - 14 in. w.c.	Natural			

FAN OPTIONS									
UNIT NO.	TAG	OPTION (Qty. - Descr.)							
1		1 - Grease Box							
		1 - Full Grating For Exhaust Fans							
		1 - 3 Year Extended Motor Warranty							
		1 - Fan Back Grease Seal - Drop Ledge - For Grease Batts							
		1 - AC Interlock Relay - 24VAC Coil							
		1 - Reduced Backdraft Damper For A-D Housing							
		1 - Full Grating For Commercial Heater							
		1 - Low Fire Start							
		1 - Static Pressure Gauge, 0-25"							
		1 - Manifold Pressure Gauge, -5 to 15" w.c.							
		1 - Separate 120V Wiring Package (Required and used only for 24V or Pressure with VFD) - Three Phase Only							
		1 - 3 Year Extended Motor Warranty							
		1 - Extra Set of Belts							

FAN ACCESSORIES									
FAN UNIT NO.	TAG	EXHAUST	SUPPLY						
1		YES	YES						

CURB ASSEMBLIES									
NO.	IN.	WEIGHT	ITEM	SIZE					
1	18	34 LBS	Curb	24.500" x 24.500" x 24.000" 3,00010.000 Pitch Verted Hinged					
2	18	74 LBS	Curb	24.000" x 24.000" x 24.000" 3,00010.000 Pitch Along Width, Right Insulated					

FAN SOUND INFORMATION														
FAN UNIT NO.	MOTOR	HP	LWA	SWES	DBA	BISTAKE FT	OCTAVE 1	OCTAVE 2	OCTAVE 3	OCTAVE 4	OCTAVE 5	OCTAVE 6	OCTAVE 7	OCTAVE 8
1	Exhaust	1204	82	192	71.3	5	37	82.1	88.6	79.7	72.3	65.9	63.8	57.7
2	Supply	1204	84	22	72.6	5	85.6	85.6	84	86.6	76.8	77.2	73	69.5

CUSTOMER APPROVAL TO MANUFACTURE:

Approved as Noted

Approved with NO Exception Taken

Revised and Resubmit

SIGNATURE: _____ DATE: _____

CAPTIVEAIRE
 JOB# Little Giant r/s
 LOCATION PORTLAND, ME, 04102
 DATE 3/27/2017 JOB # 2966659
 DWG # 4 DRAWN BY BFC-21
 REV. SCALE 3/8" = 1'-0"

FAN SCHEDULES

REV. 1 3/27/17

Halley's Metal Shop, Inc.
"Since 1917"

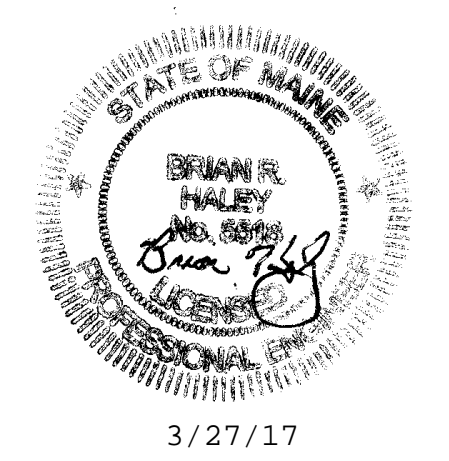


HALEY'S METAL SHOP, INC.
 539 ELM STREET
 BIDDEFORD, MAINE 04005
 PH: 207-284-8571, FAX: 207-284-9597

DATE: 03/01/17

SCALE: NTS

LITTLE GIANT RESTAURANT
 PORTLAND, MAINE
 HOOD SYSTEM
 HVAC
 M-3



FOR CONSTRUCTION