

UL L511 or GA-FC-5710

Wood Dimensional Lumber

Fire Rating	2 hour
System Thickness	12-1/4"

- Assembly Description
- [Assembly not recommended when sound control is a major consideration]**
- 1" nominal wood sub and finished floor
 - 2x10 wood joist 16" o.c.
 - resilient channel or equivalent
 - 2 layers 5/8" **Sheetrock® Brand Firecode® C Core Gypsum Panels**
 - joints finished

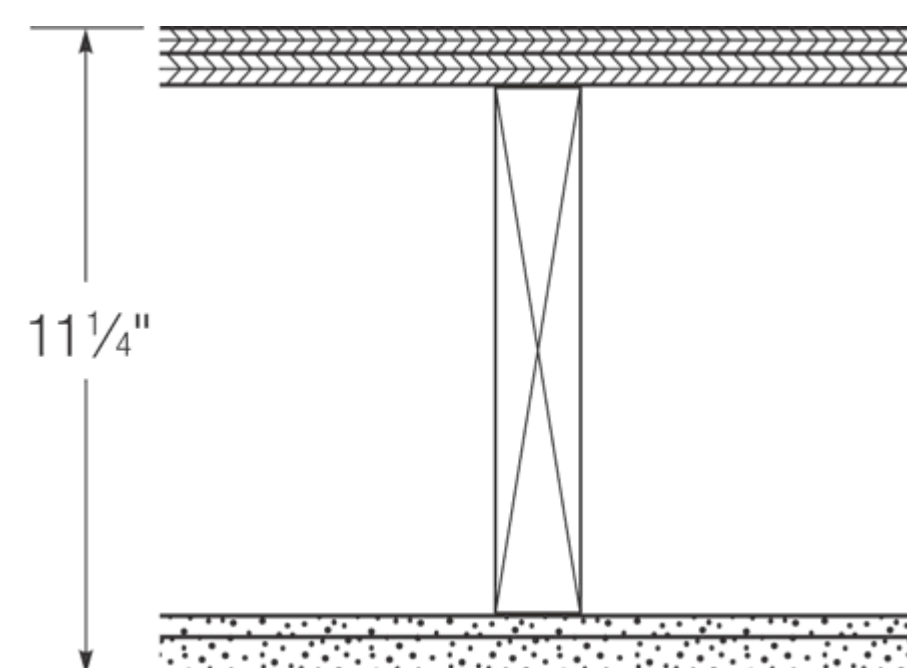
For more information, visit [L511](#)

5 2 HOUR FLOOR ASSEMBLY



Home / System Selector > GA-FC-5470

Fire Rated System Design - GA-FC-5470



GA-FC-5470

Wood Dimensional Lumber

Fire Rating	STC / Sound Test	System Thickness
1 hour	N/A	11.25 in.

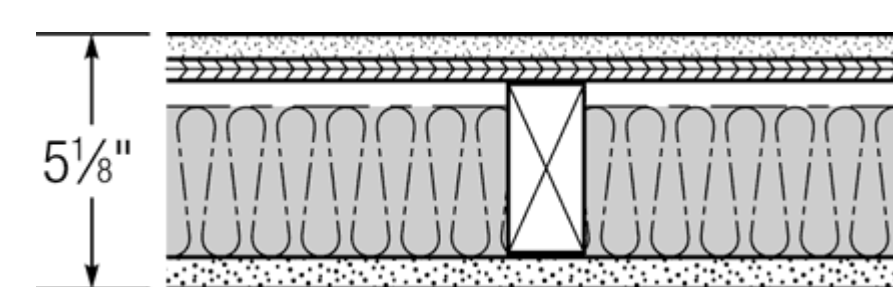
- Detail Description
- 1" nominal T&G sub and finish floor
 - 2x10 wood joists 16" o.c.
 - 5/8" 1:2 Red Top Gypsum Plaster-perlite over 3/8" **Rocklath® Brand Firecode® Core Plaster Base** (<http://www.usg.com/content/usgcom/en/products-solutions/products/interior-panels/panels-&-drywall/rocklath-firecode-core-plaster-base.html>)
 - optional veneer plaster

United States Gypsum Company : 550 W. Adams, Chicago, IL, 60661 : www.usgdesignstudio.com (<http://www.usgdesignstudio.com>)
Reference URL: <http://www.usgdesignstudio.com/assembly.asp?id=920921&assemblyCategory=921054>



Home / System Selector > UL U303 or GA-WP-8131

Fire Rated System Design - UL U303 or GA-WP-8131



UL U303 or GA-WP-8131

Exterior Walls - Wood Stud (Loadbearing)

Fire Rating	STC / Sound Test	System Thickness
1 hour	N/A	5.125 in.

- Detail Description
- Cement Board - 1/2 or 5/8 in. thick board, applied vertically or horizontally - **DUROCK® Cement Board Next Gen** ([products.asp?product=durock-cement-board](http://www.usg.com/content/usgcom/en/products-solutions/products/interior-panels/panels-&-drywall/durock-cement-board-next-gen))
 - Sheathing Materials - Min 15/32 in. thick, 4 ft wide, wood structural panels, min grade "sheathing" applied vertically
 - Wood Studs - 2x4 wood studs spaced max 16 in. OC
 - Batts and Blankets - 3 in. mineral wool batt insulation
 - Gypsum Board - 5/8 in. thick gypsum board applied vertically or horizontally. - **SHEETROCK® UltraLight Firecode X Gypsum Panels** ([products.asp?product=sheetrock-ultralight-gypsum-panels-firecode-x](http://www.usg.com/content/usgcom/en/products-solutions/products/interior-panels/panels-&-drywall/sheetrock-ultralight-gypsum-panels-firecode-x))

United States Gypsum Company : 550 W. Adams, Chicago, IL, 60661 : www.usgdesignstudio.com (<http://www.usgdesignstudio.com>)
Reference URL: <http://www.usgdesignstudio.com/assembly.asp?id=920593&assemblyCategory=921052>



BXUV.U301
Fire Resistance Ratings - ANSI/UL 263

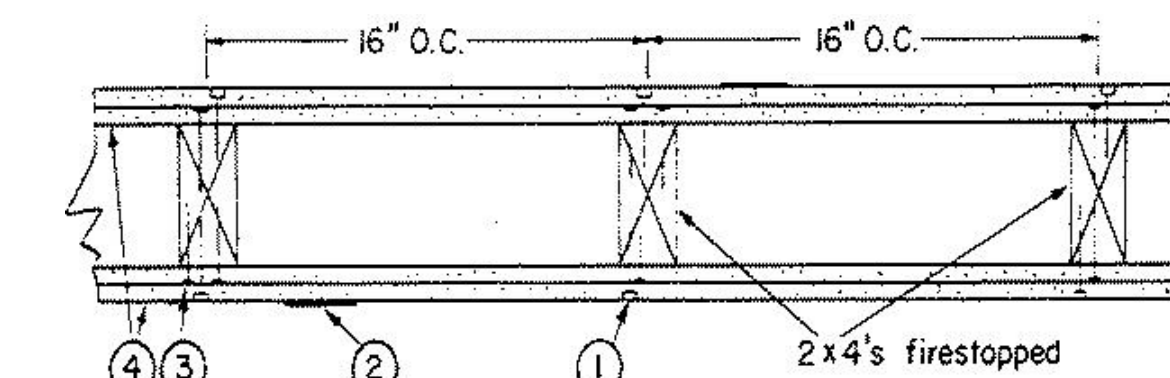
Page Bottom

Fire Resistance Ratings - ANSI/UL 263

See General Information for Fire Resistance Ratings - ANSI/UL 263

Design No. U301
July 30, 2007
Bearing Wall Rating - 2 HR.
Finish Rating - 66 Min.

Load Restricted for Canadian Applications - See Guide BXUV2



1. **Nailheads** - Exposed or covered with joint finisher.
2. **Joints** - Exposed or covered with fiber tape and joint finisher. As an alternate, nominal 3/32 in. thick gypsum veneer plaster may be applied to the entire surface of Classified veneer baseboard. Joints reinforced.
3. **Nails** - 6d cement coated nails 1-7/8 in. long, 0.0915 in. shank diam, 1/4 in. diam heads, and 8d cement coated nails 2-3/8 in. long, 0.113 in. shank diam, 9/32 in. diam heads.
4. **Gypsum Board** - 5/8 in. thick, two layers applied either horizontally or vertically. Inner layer attached to studs with the 1-7/8 in. nails spaced 6 in. OC. Outer layer attached to studs over inner layer with the 2-3/8 in. long nails spaced 8 in. OC. Vertical joints located over studs. All joints in face layers staggered with joints in base layers. Joints of each base layer offset with joints of base layer on opposite side.

When used in widths other than 48 in., gypsum board to be installed horizontally.

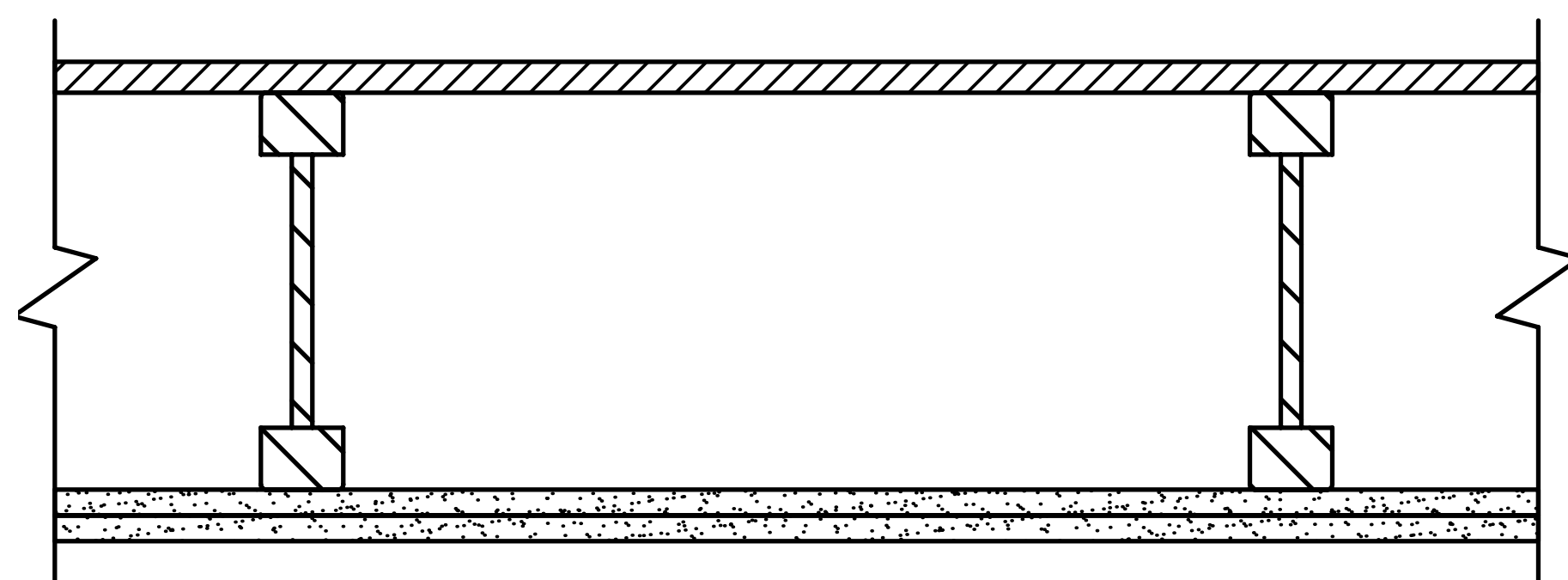
When Steel Framing Members* (Item 6) are used, base layer attached to furring channels with 1 in. long Type S bugle-head steel screws spaced max 24 in. OC; face layer attached with 1-5/8 in. long Type S bugle-head steel screws spaced max 12 in. OC.

AMERICAN GYPSUM CO - Types AGX-1, AG-C, AGX-11.

BEIJING NEW BUILDING MATERIALS PUBLIC

LTD CO - Type DBX-1.

CERTAINTED GYPSUM WV INC - Types 1, FRPC, EGRG, ProRoc Type C or ProRoc Type X.



FC 5407 (1 HOUR): Base Layer 5/8" (15.9 mm) Fire-Shield Gypsum Board applied at right angles to wood I-joists 24" o.c. with 1-1/4" Type W or S drywall screws 24" oc. Face layer 5/8" Fire-Shield Gypsum Board applied at right angles to I-joists with 1-7/8" Type W or S drywall Screws 12" o.c. at joints and intermediate I-joists and 1-1/2" Type G screw 12" o.c placed 2" back on either side of end joints. Joints offset 24" from base layer joints. Wood I-joists supporting 1/2" wood structural panels applied at right angle to trusses with 8d nails. Ceiling provides one hour fire resistance protection for trusses.

1 1 HOUR CEILING ASSEMBLY

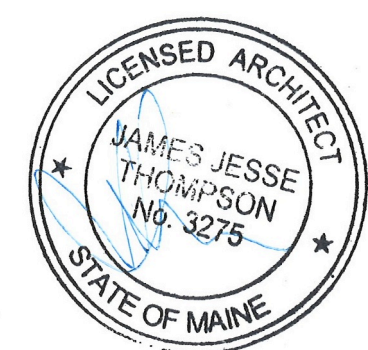
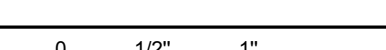
2 1 HOUR FLOOR ASSEMBLY

3 1 HOUR EXTERIOR WALL

4 2 HOUR OCCUPANCY SEPARATION

<http://database.ul.com/cgi-bin/XYV/template/LISEXT/IFRAME/showpage.html?name=...> 11/22/2007

SCALE: 1" = 1'-0"



BUILDING PERMIT

KAPLAN THOMPSON
ARCHITECTS
424 FORE ST., PORTLAND, ME 04101
207-842-2888 FAX: 842-2828

PROJECT:
211 DANFORTH
RENOVATION
KEITH HICKMAN
211 DANFORTH STREET
PORTLAND, ME

DRAWING: FIRE ASSEMBLIES

SCALE: DRAWN BY: JT / JT

DATE: AUGUST 7, 2014 REVISED:

A-8.1