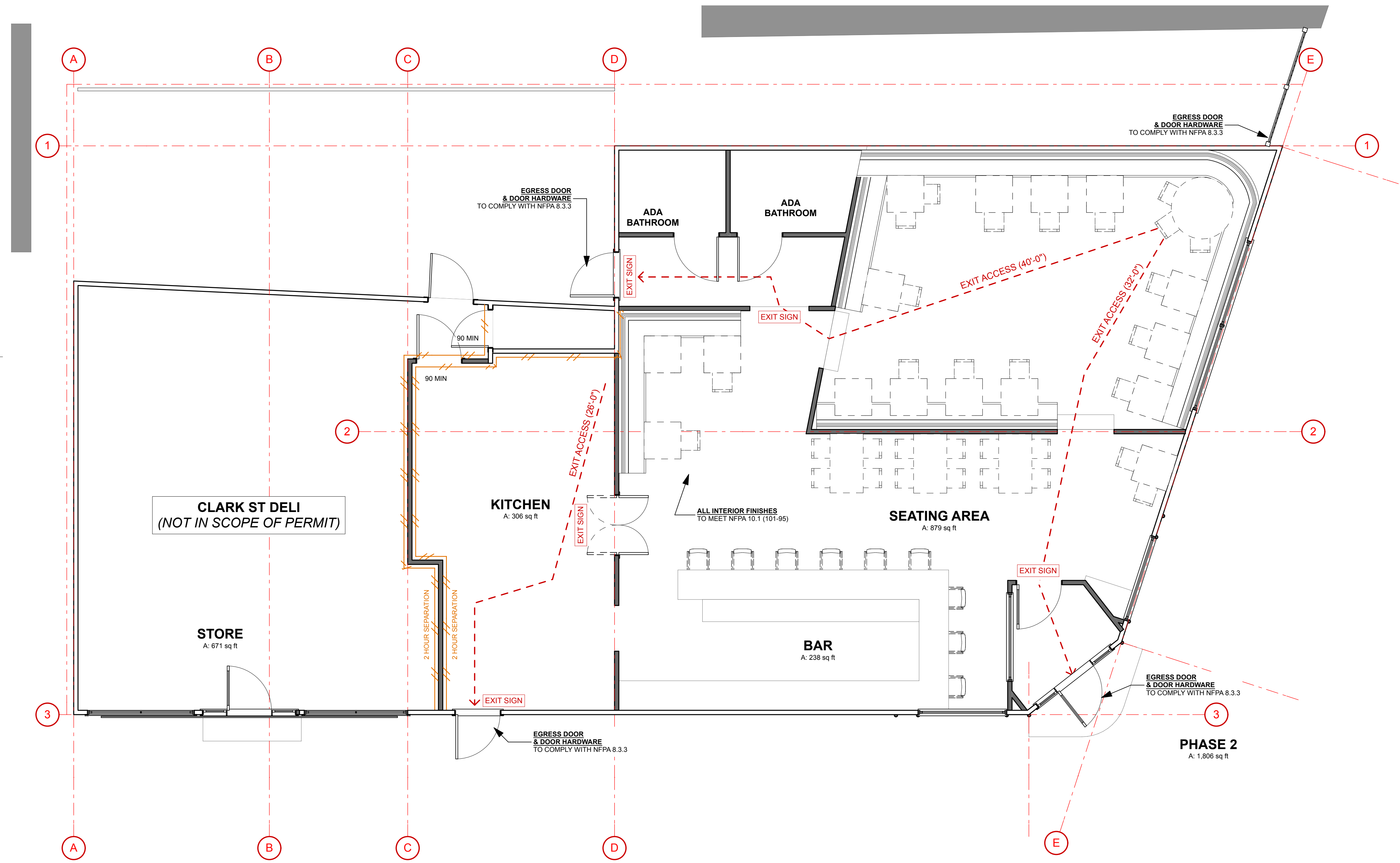


2 SECTION: SEPARATION DIAGRAM
NOT TO SCALE

NFPA	CODE REF.	PAGE
Occupancy Type	Assembly, Mercantile & Storage	6.1.2, 6.1.12 101-41
Required Separation of Occupancies	Mixed Occupancies: Comply with most restrictive	6.1.14.3.2 101-43
	Assembly < 300 to Mercantile = 2 HOUR	Table 6.1.14.4.1(b) 101-45
	Assembly < 300 to Storage, Low Hazard = 2 HOUR	
Means of Egress	Mercantile to Storage, Low Hazard = 2 HOUR	
	Exit Access Corridors separated with 1 Hour rating	7.1.3.1 101-44
Occupant Load	Existing Stair dimensions: min width = 36", 8" riser, 9" tread, 6'-8" clear	Table 7.2.2.2.1.1(b) 101-55
	Assembly, Less Concentrated: 879 SF / 15 = 59 Occupants	Table 7.3.1.2 101-70
	Kitchens: 306 SF + 238 SF = 544 SF / 100 = 6 Occupants	
	Storage: 2,205 SF / 300 = 8	
	Total Occupancy: 73	
Number of Exits	Assembly: 2 means of egress	7.4.1.1 101-265
	Storage: 1 means of egress	42.2.4.1(1) 101-304
Egress Capacity: Level Components	0.2" / person (244 / 2 x 0.2 = 24.4")	T-7.3.3.1 101-67
	0.3" / person (244 / 2 x 0.3 = 36.6")	
Egress Capacity: Stairs	32"	
Min. Door Width	36"	
Min. Corridor Width	36"	
Construction & Compartmentalization	Separate buildings, if a 2-hour or greater fire barrier wall	8.2.1.3(1) 101-80
	2-hour Fire barrier = 1 1/2 hour Door Assembly	Table 8.3.4.2 101-82
Opening Protectives		
New Assembly Occupancies		
Common Path of Travel	20'-0", 75'-0" for < 50 occupants	12.2.5.1.2 101-110
Dead End Corridors	20'-0" max	12.2.5.1.3 101-110
Travel Distance to Exits	200'-0" maximum	12.2.6.2 101-113

3 NFPA CODE SUMMARY
SCALE: 1" = 1'-0"



1 FIRE SAFETY PLAN
SCALE: 1/4" = 1'-0"

