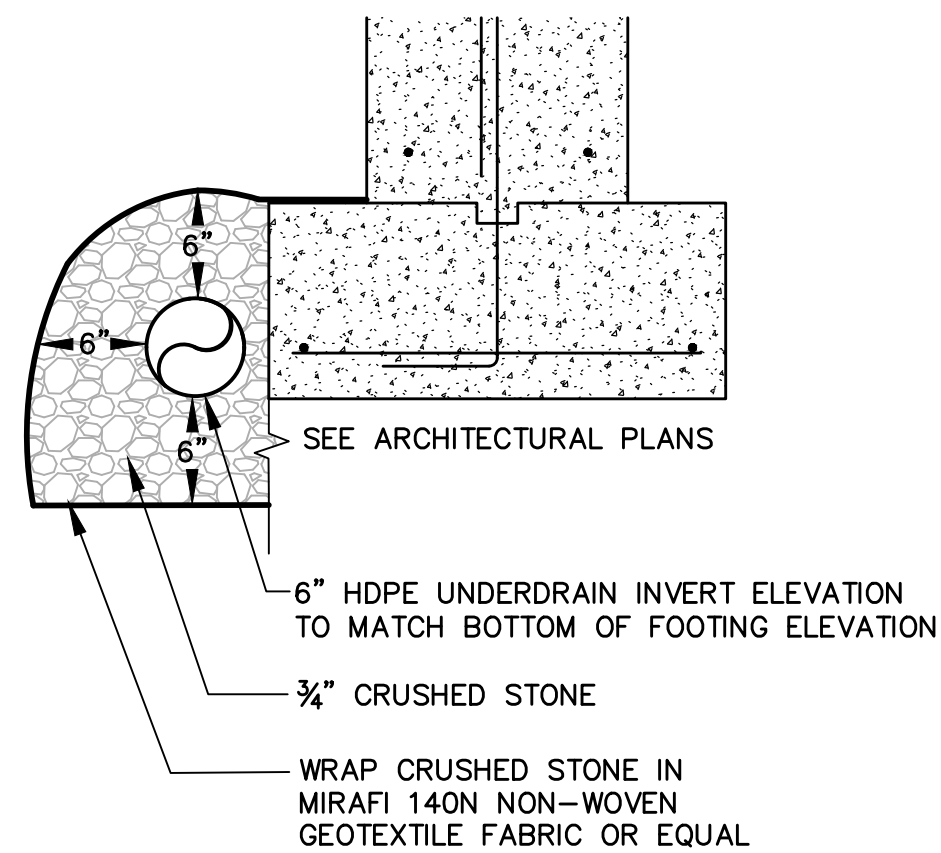
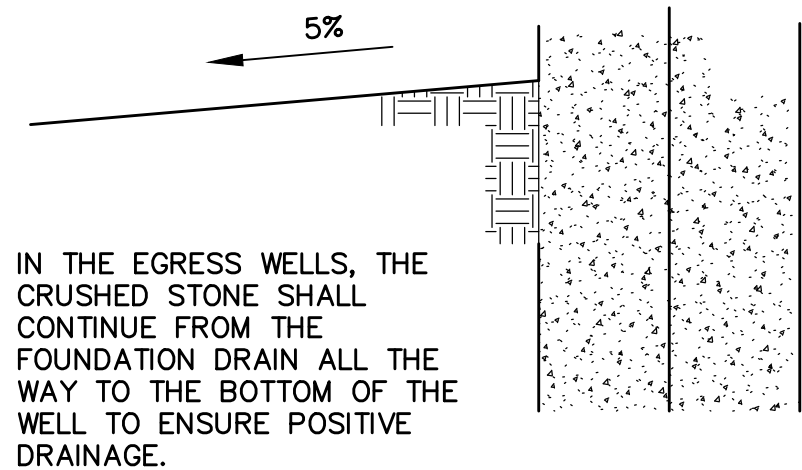
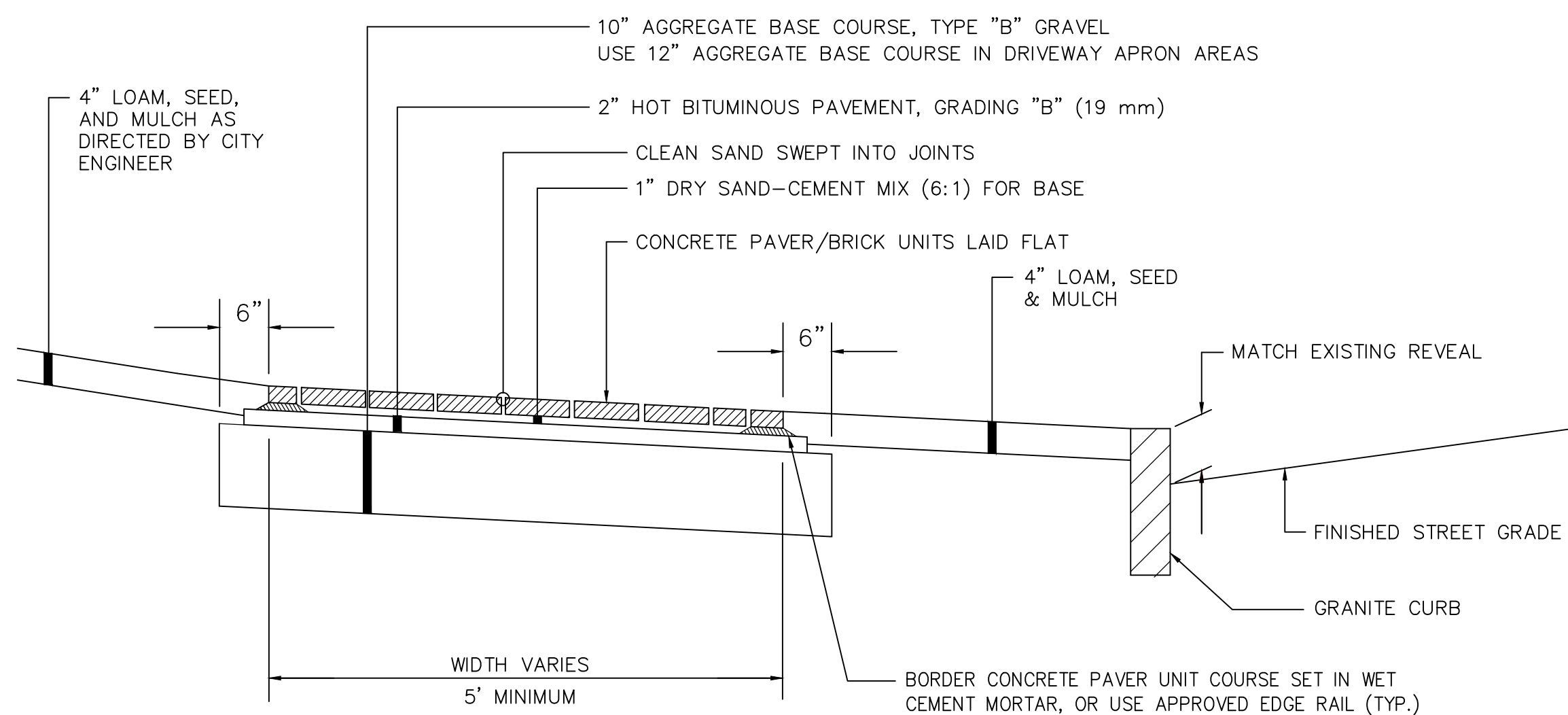


1. If the existing sewer is PVC then the connection shall be made using bell and spigot joints, NOT Ferncos.
2. All damaged piping shall be removed by saw cutting or removing an entire segment of pipe and replaced with new PVC. Contractor shall remove clay bell(s) (by saw cutting) to facilitate Fernco installation. Saw cuts shall be square so that joints between new and existing pipes do not have gaps.
3. Contractor is responsible for maintaining sewer flows while while making the new sewer service and drain connections. If required, bypass pumping shall be coordinated with the City. Contractor shall provide the City 24 hours notice.
4. Bypass pumping may be required and shall be coordinated with the City

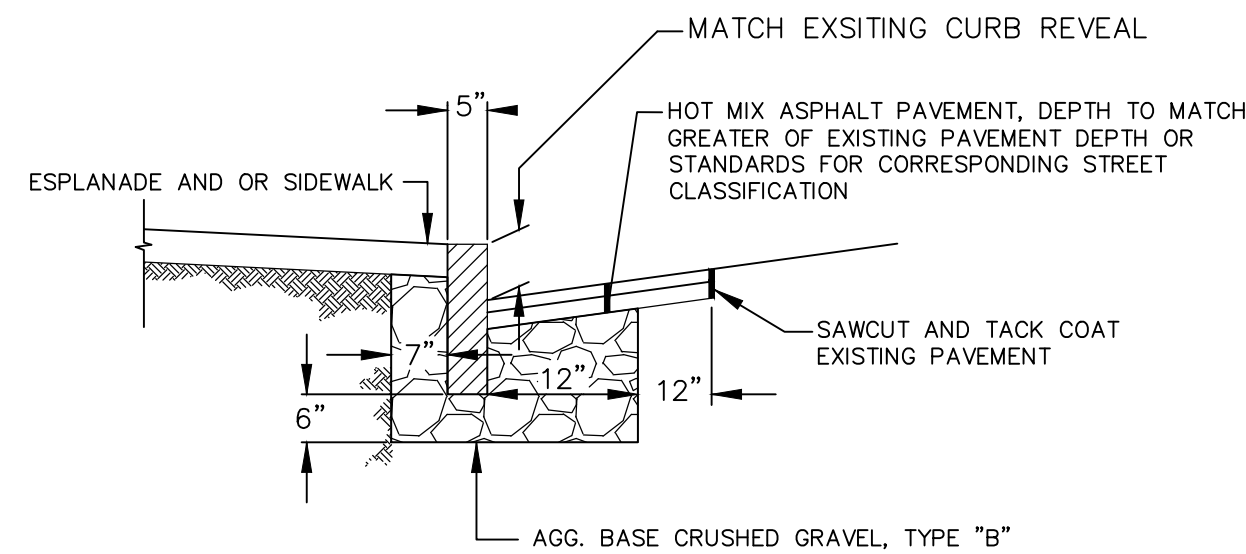
**CONNECTION TO SANITARY SEWER
(USE FOR SEWER SERVICE AND FOUNDATION DRAIN)**



**FOOTING DRAIN DETAIL
NOT TO SCALE**



**CONCRETE UNIT PAVER AND BRICK SIDEWALK WITH BITUMINOUS BASE
NOT TO SCALE**

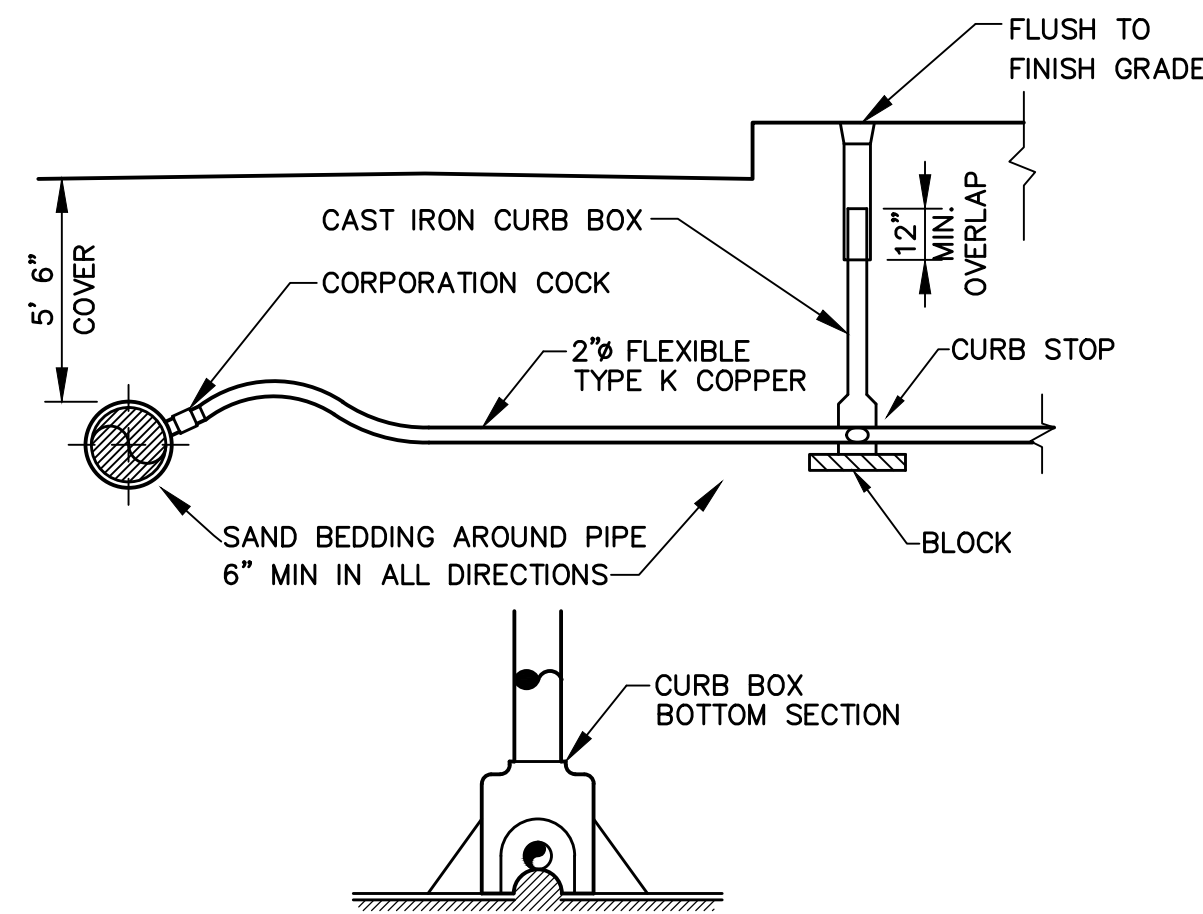


VERTICAL GRANITE CURB CROSS SECTION

**VERTICAL GRANITE CURB
INSTALLATION IN EXISTING STREETS
NOT TO SCALE**

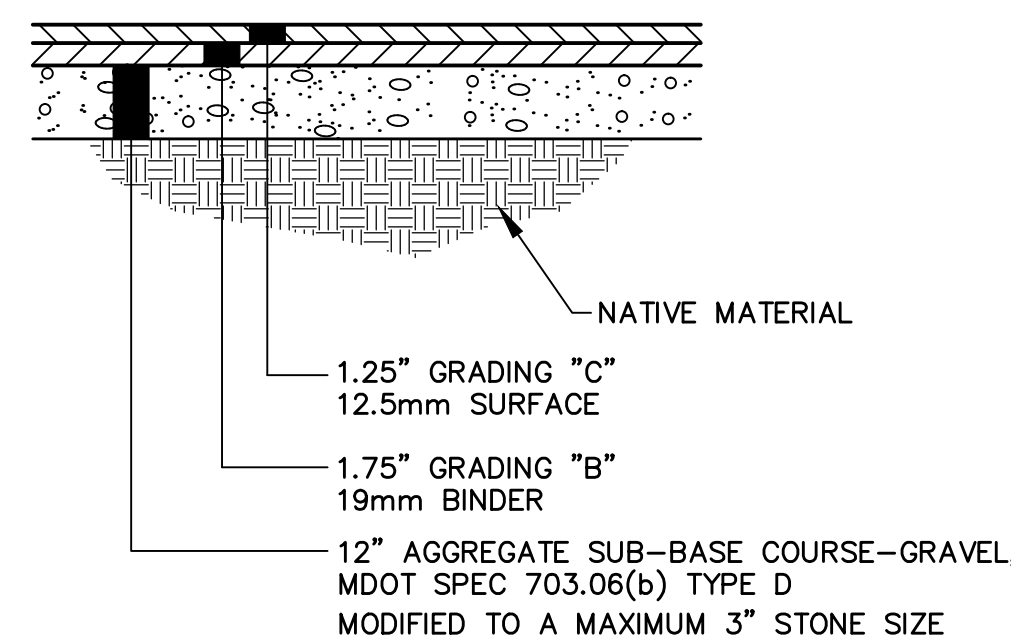
CONCRETE UNIT PAVERS AND BRICKS:

BRICKS SHALL BE: Bricks shall be of standard size (2-1/4" x 4" x 8"). Bricks shall be Pine Hall Pathway Paver Brick as manufactured by Pine Hall Brick Co., Madison, North Carolina. Specification number: 4"x8"; LaChance item # 193623, Pine Hall Pathway Paver Brick. Prior to ordering the brick, samples shall be submitted in whole straps to show color range. All base courses and joints shall conform to the applicable subsections of Division 700 of the Standard Specifications

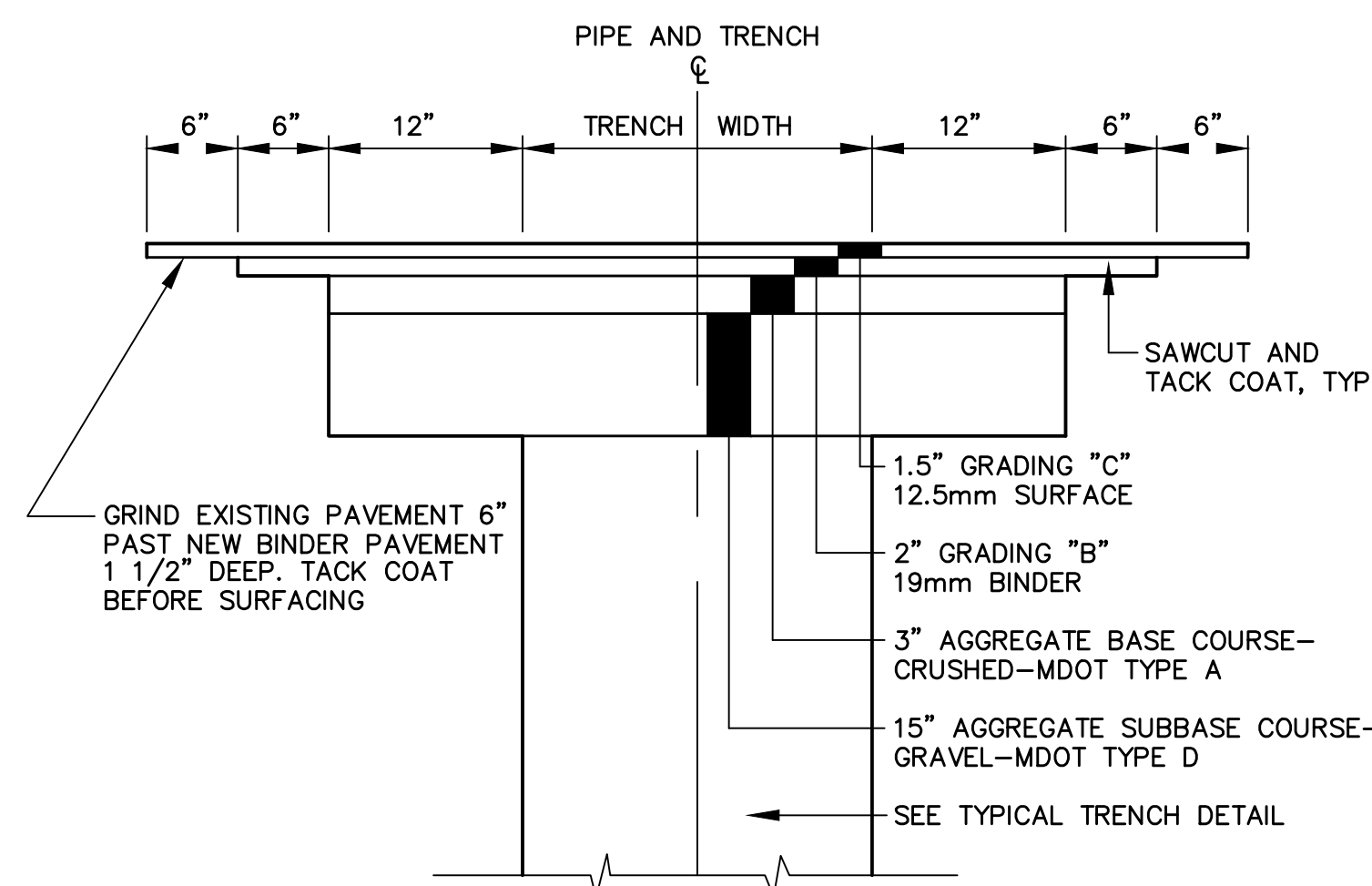


ALL MATERIALS AND WORKMANSHIP SHALL MEET PORTLAND WATER DISTRICT STANDARDS CONTRACTOR TO COORDINATE WITH PDW FOR SERVICE TAP

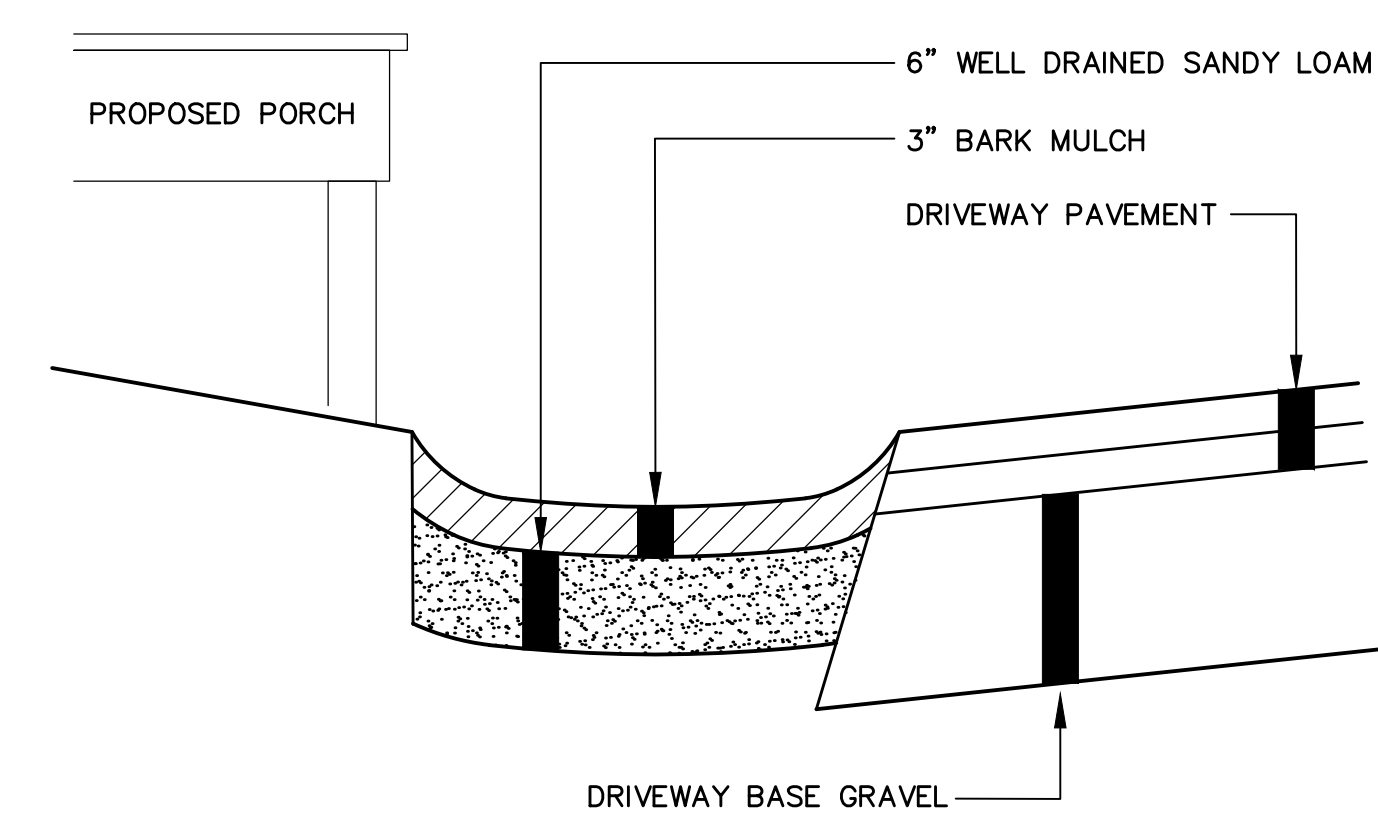
**TYPICAL COPPER DOMESTIC SERVICE DETAIL
NOT TO SCALE**



**TYPICAL DRIVEWAY CONSTRUCTION
OUTSIDE OF RIGHT OF WAY
NOT TO SCALE**

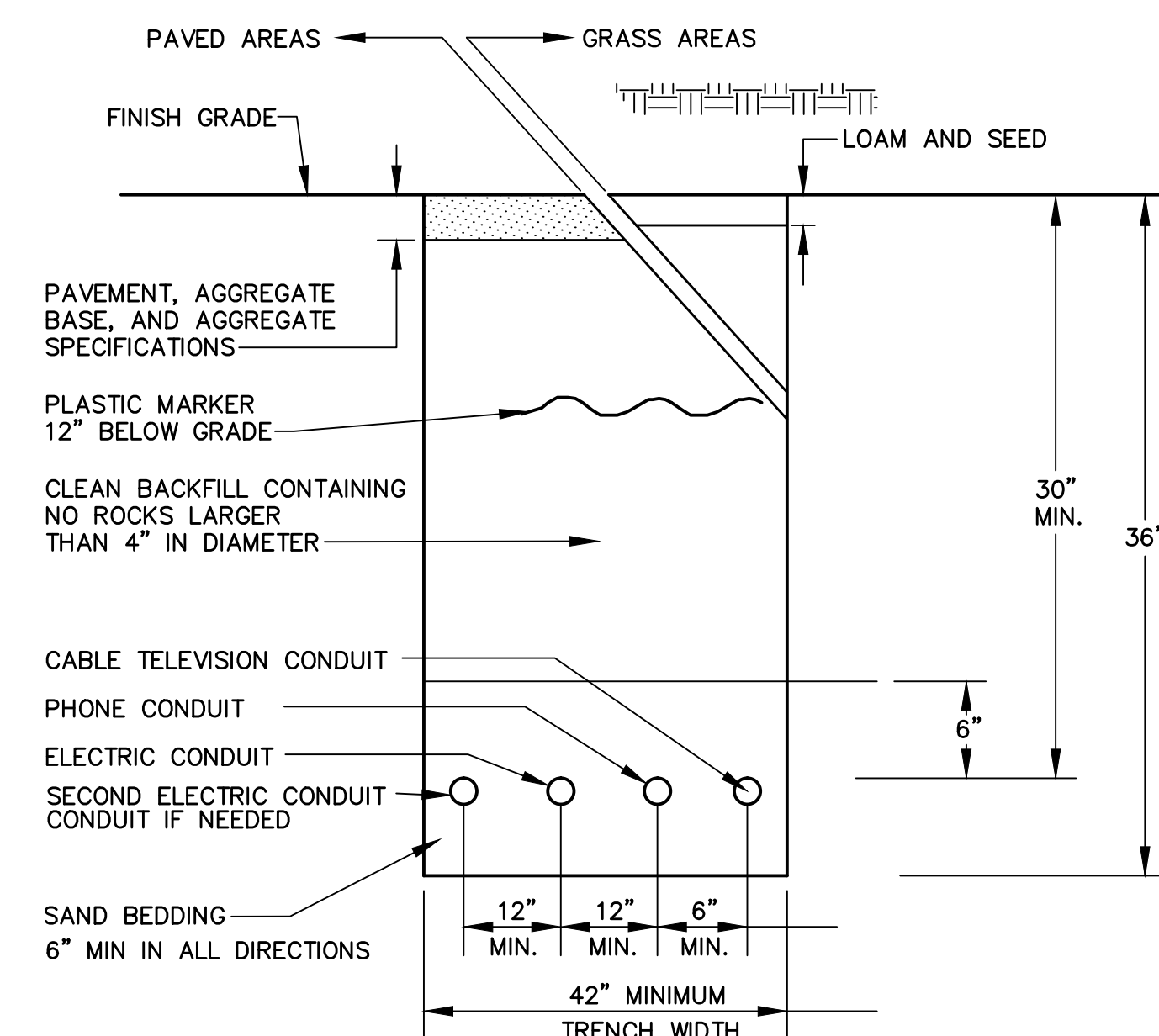


**TYPICAL TRENCH PAVING DETAIL
NOT TO SCALE**



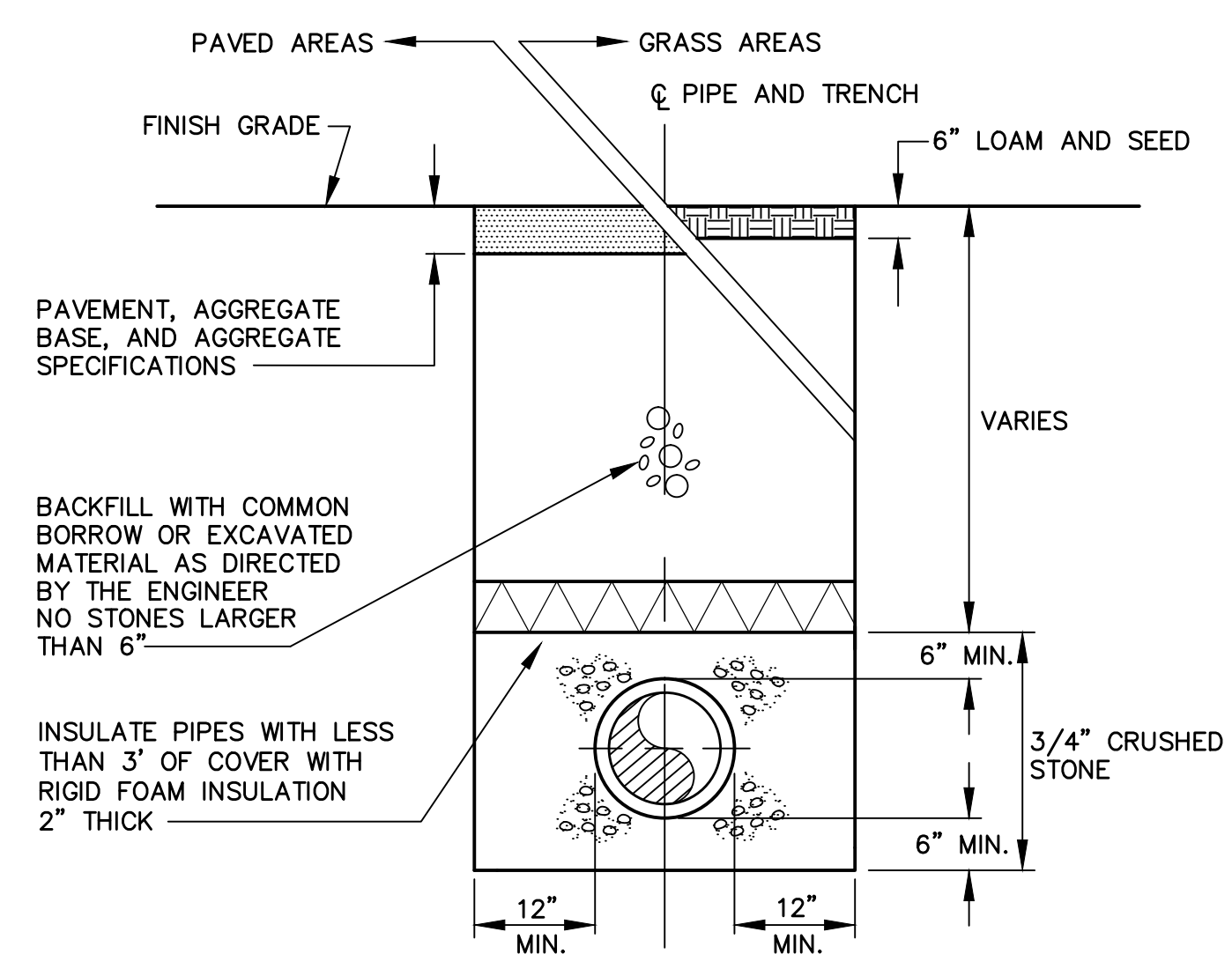
1. ALL RAIN GARDEN AREAS TO USE 3" OF BARK MULCH AND 6" OF WELL DRAINED SANDY LOAM
2. SEE PLAN FOR GRADING

**RAIN GARDEN DETAIL
NOT TO SCALE**



SEE ELECTRICAL PLANS FOR CONDUIT SIZES

**UNDERGROUND UTILITY TRENCH DETAIL
NOT TO SCALE**



**TYPICAL TRENCH - STORMDRAIN & SEWER
NOT TO SCALE**

7-9 May Street

7-9 May Street
Portland, Maine

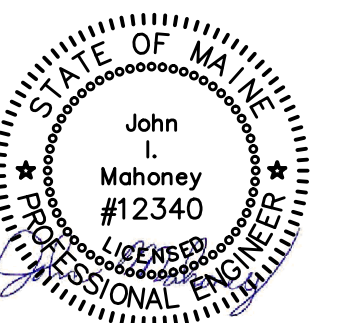
Prepared for:

**KAPLAN THOMPSON
ARCHITECTS**
424 fore st., portland, me 04101
207-842-2888 fax: 842-2828
jesse@kaplanthompson.com

**RANSOM
Consulting, Inc.**

400 Commercial Street, Suite 404,
Portland, Maine 04101
Tel (207) 772-2891
Fax (207) 772-3218
www.ransominc.com

**ISSUED FOR
PERMITTING ONLY**



Civil Details

A	City Permitting	2-19-15
---	-----------------	---------

No.	Revision/Issue	Date
-----	----------------	------

Design by:	JIM	Checked by:	SJB
Drawn by:	JIM	Approved by:	SJB

Project:
131.06132

Sheet No:

C2