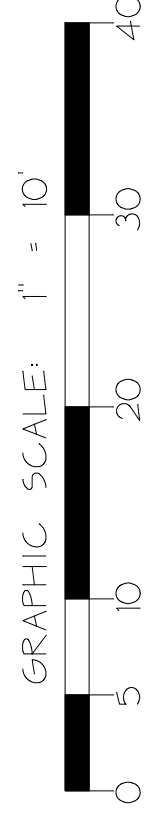
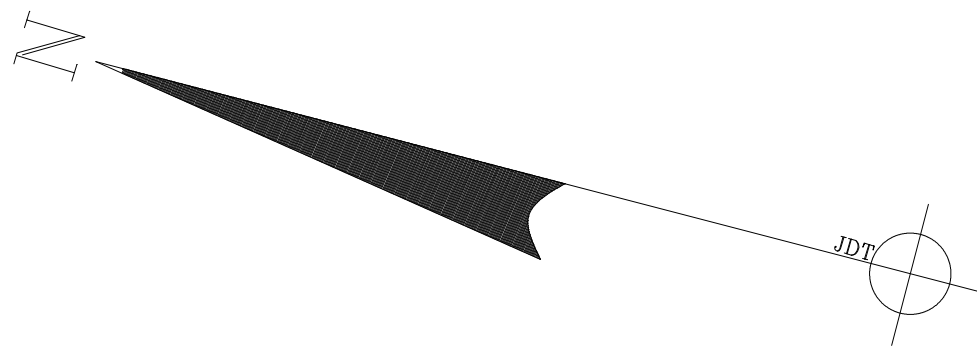
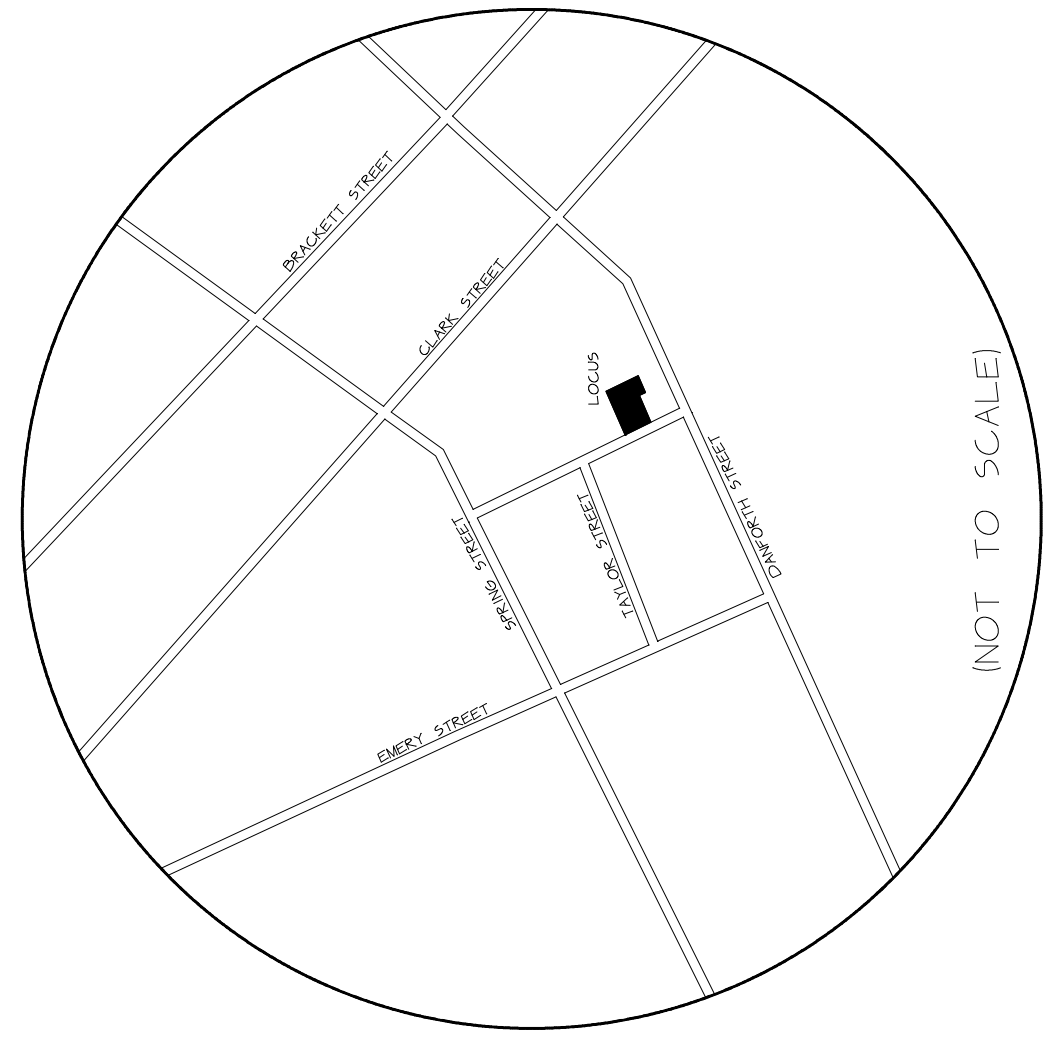
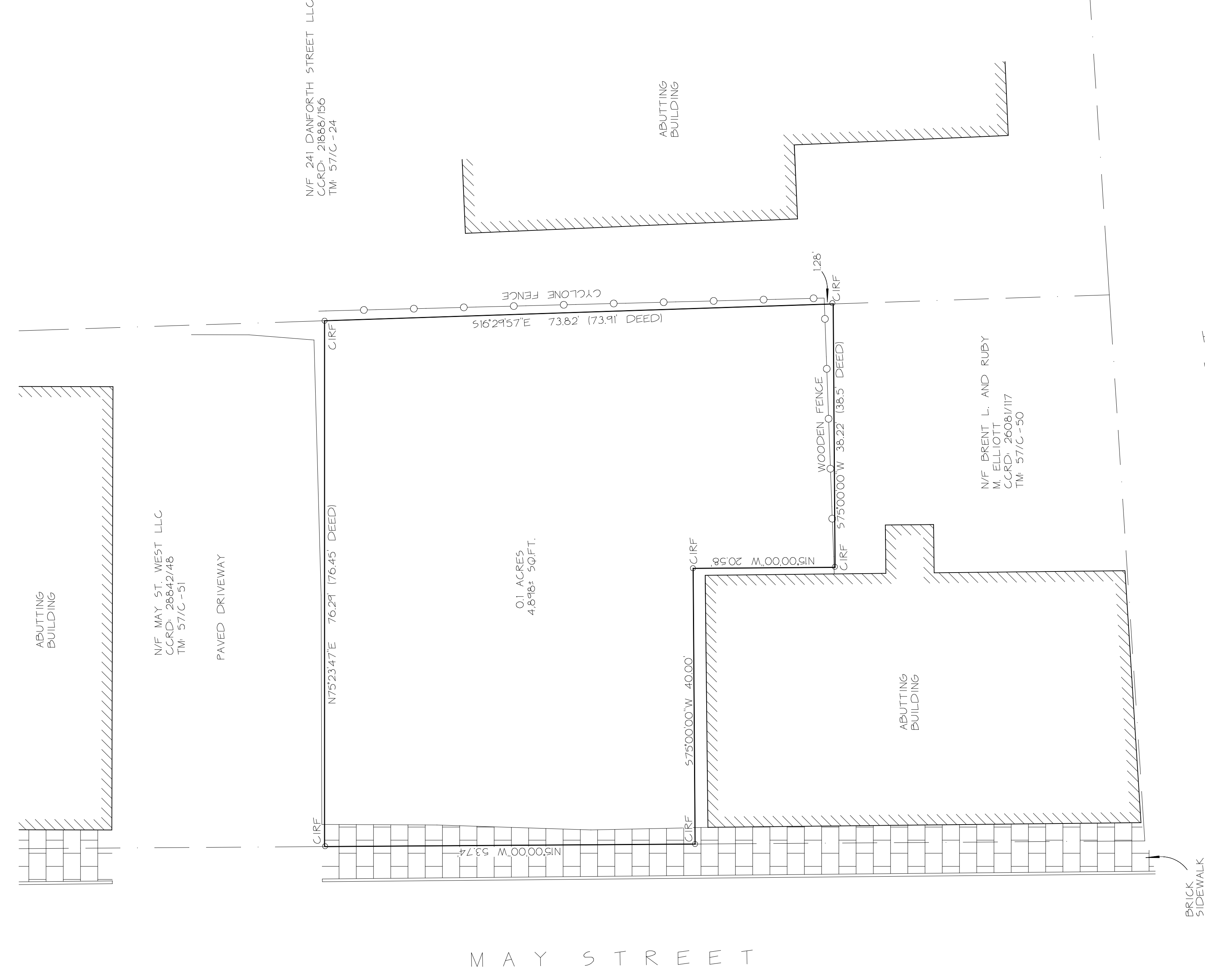


LOCATION SKETCH



REVISION NO.	DATE	REVISION PURPOSE



LOCUS DEED REFERENCE
CUMBERLAND COUNTY REGISTRY OF DEEDS (CCRD)
BOOK: 30174 PAGE: 347

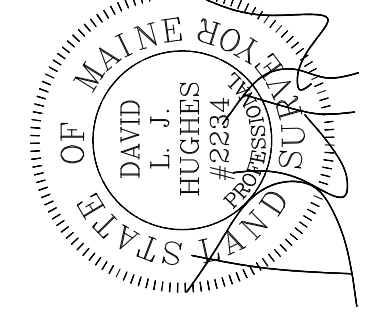
PLAN REFERENCES

1. CONDOMINIUM FLAT ON DANFORTH STREET AND MAY STREET IN PORTLAND, CUMBERLAND COUNTY, MAINE, DATED MARCH 2, 2000 AND RECORDED IN THE CUMBERLAND COUNTY REGISTRY OF DEEDS IN PLAN BOOK 200, PAGE 224.

LEGEND

- N/F - NOW OR FORMERLY
- TM - TAX MAP
- CIRF - CAPPED IRON ROD FOUND
- MON - MONUMENT

PLAN OF LAND AT
7-9 MAY STREET, PORTLAND, MAINE
MADE FOR
7-9 MAY STREET LLC



LIVINGSTON-HUGHES
PROFESSIONAL LAND SURVEYING CORPORATION
88 GUINEA ROAD, KENNEBUNKPORT, MAINE 04046