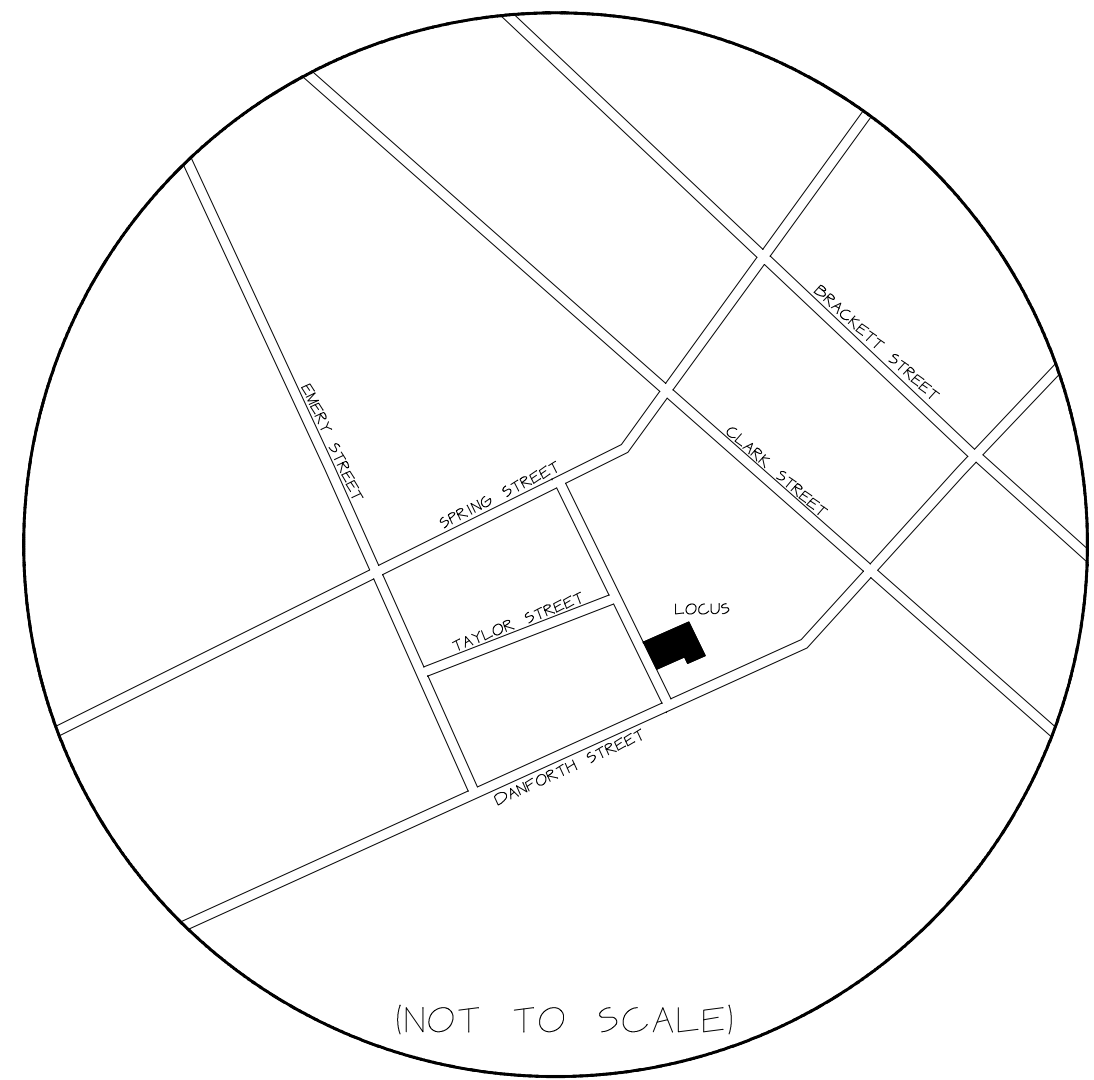
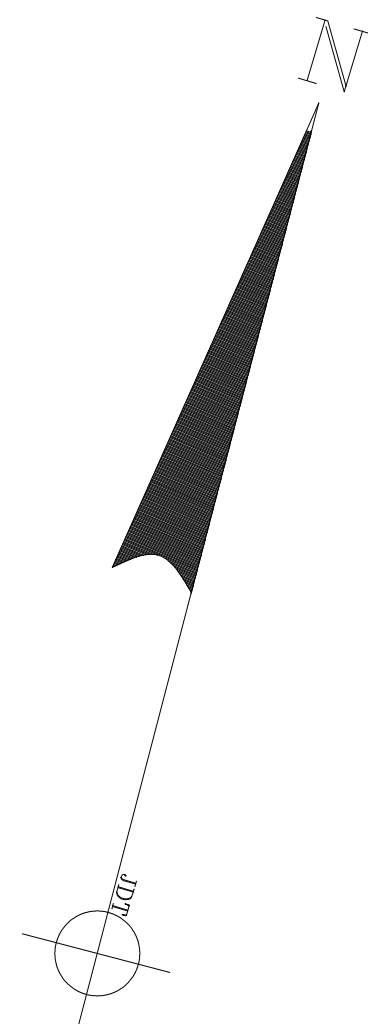


LOCATION SKETCH



(NOT TO SCALE)



LOCUS DEED REFERENCE

CUMBERLAND COUNTY REGISTRY OF DEEDS (CCRD)
BOOK: 30174 PAGE: 347

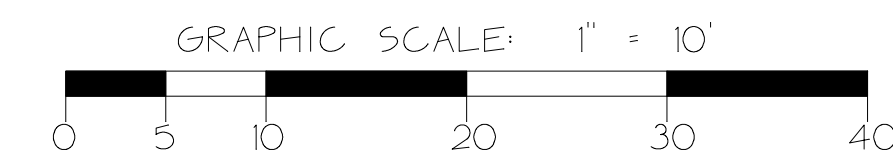
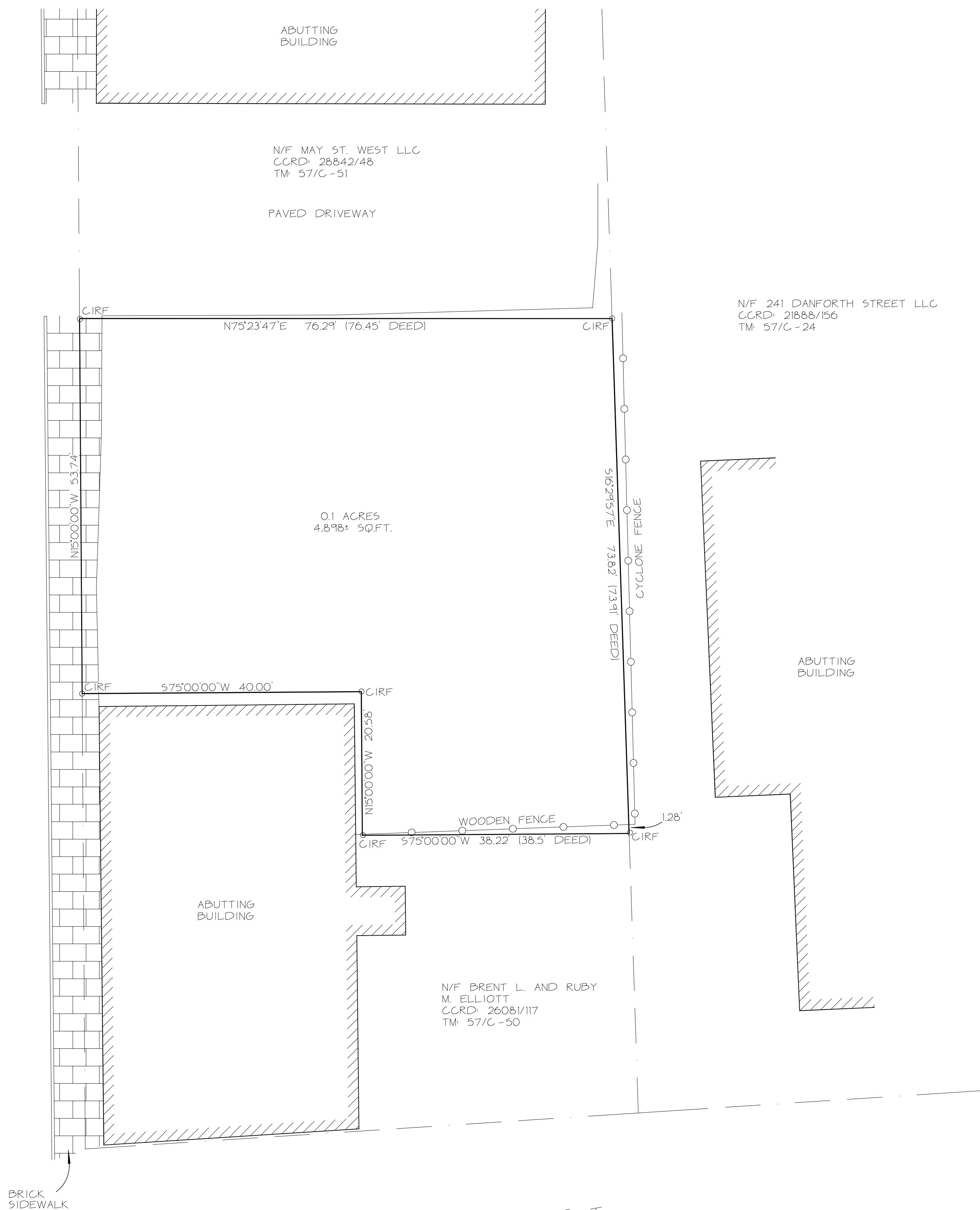
PLAN REFERENCES

1. CONDOMINIUM PLAT ON DANFORTH STREET AND MAY STREET IN PORTLAND, CUMBERLAND COUNTY, MAINE, DATED MARCH 2, 2000 AND RECORDED IN THE CUMBERLAND COUNTY REGISTRY OF DEEDS IN PLAN BOOK 200, PAGE 224.

LEGEND

- N/F - NOW OR FORMERLY
- TM - TAX MAP
- CIRF - CAPPED IRON ROD FOUND
- MON - MONUMENT

M A Y S T R E E T



REVISION NO.	DATE	REVISION PURPOSE

PLAN OF LAND AT
7-9 MAY STREET, PORTLAND, MAINE
MADE FOR
7-9 MAY STREET LLC

LIVINGSTON-HUGHES
PROFESSIONAL LAND SURVEYING CORPORATION
88 GUINEA ROAD, KENNEBUNKPORT, MAINE 04046

REVISION NO. []

DAVID L.J. HUGHES PLS# 2234 DATE: 11/27/2013 DRAWN: JDT CHECK: DLJH FIELD BOOK: 799-03 PROJECT: 113-084