

**PROJECT INFORMATION:**

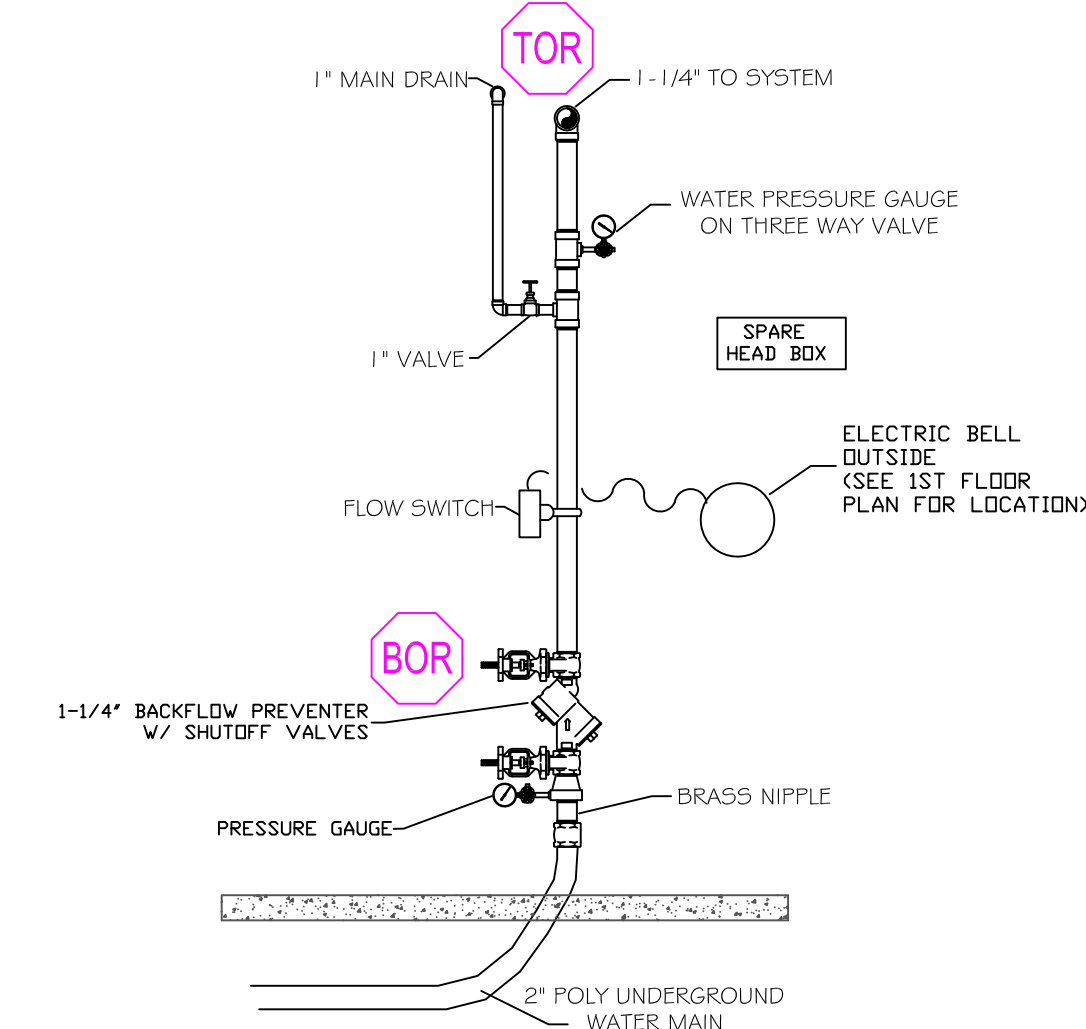
**SCOPE:**  
The fire protection project consists of installing a wet sprinkler system in this 3 unit apartment building located at 7-9 May St. Portland

**WATER SUPPLY:**  
This is a wet sprinkler system supplied by city water. A 2" underground water main will be brought into the building for the fire sprinkler sys. A 2-1/2" fdc will be installed for use by the local fire dept.

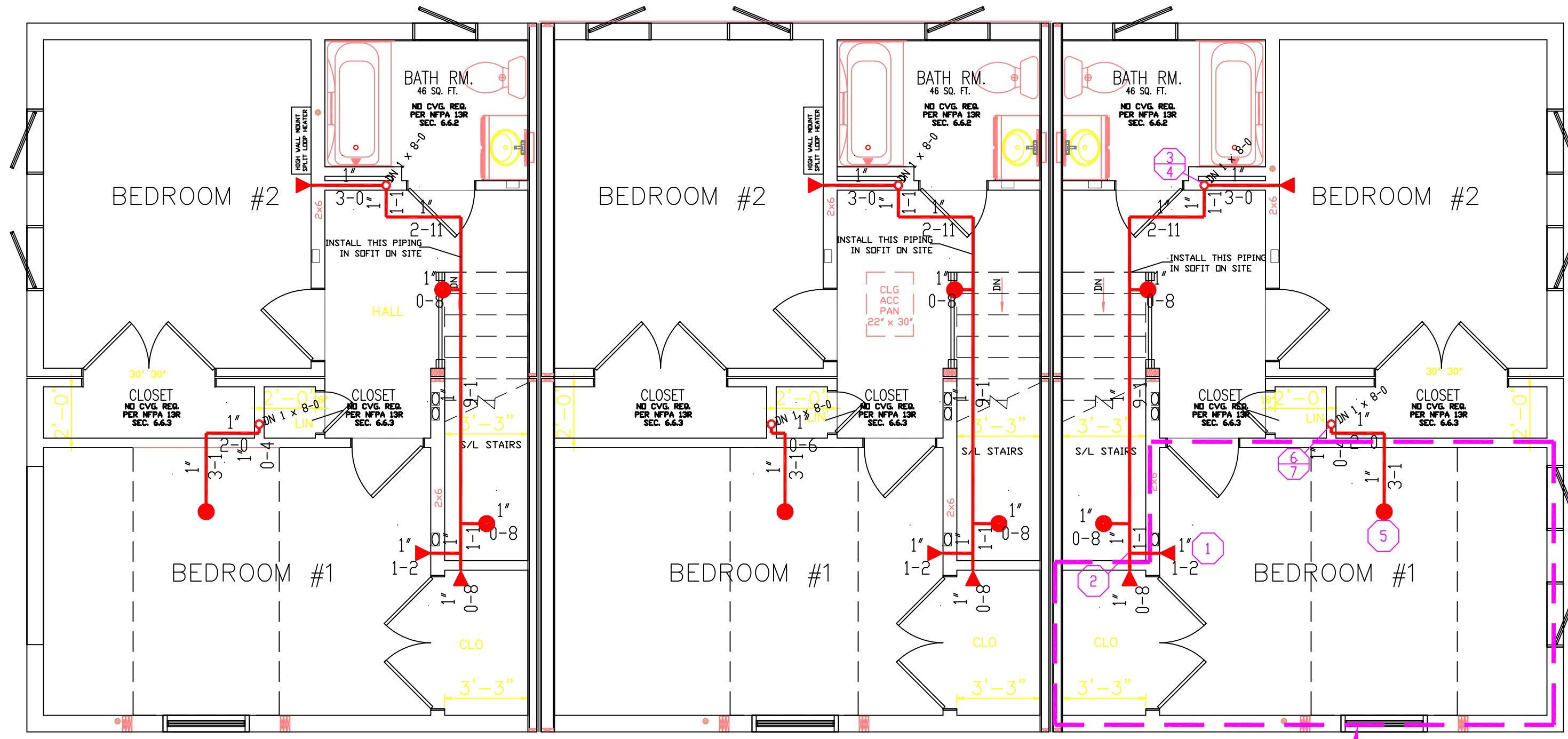
**CONSTRUCTION TYPE:**  
Construction type is "wood construction with gypsum wall board"

**CODE REFERENCES:**  
NFPA 13R Wet Sprinkler System.

**SPRINKLER SYSTEM NOTES**  
 \* DESIGN AND INSTALLATION SHALL CONFORM TO N.F.P.A. #13R (2010) & LOCAL FIRE AND BLDG. DEPTS.  
 \* HANGER INSTALLATION AND SPACING SHALL BE IN ACCORDANCE WITH N.F.P.A. #13  
 \* FIELD FOREMAN TO VERIFY LOCATION OF HIGH TEMPERATURE SPRINKLERS AND INSTALL HIGH TEMPERATURE SPRINKLERS IN ACCORDANCE WITH N.F.P.A. #13  
 \* OWNER SHALL PROVIDE ADEQUATE HEAT IN ALL AREAS ENCLOSING WET TYPE SPRINKLER PIPING TO PREVENT FREEZING AND FAILURE OF AUTOMATIC SPRINKLER SYSTEM.



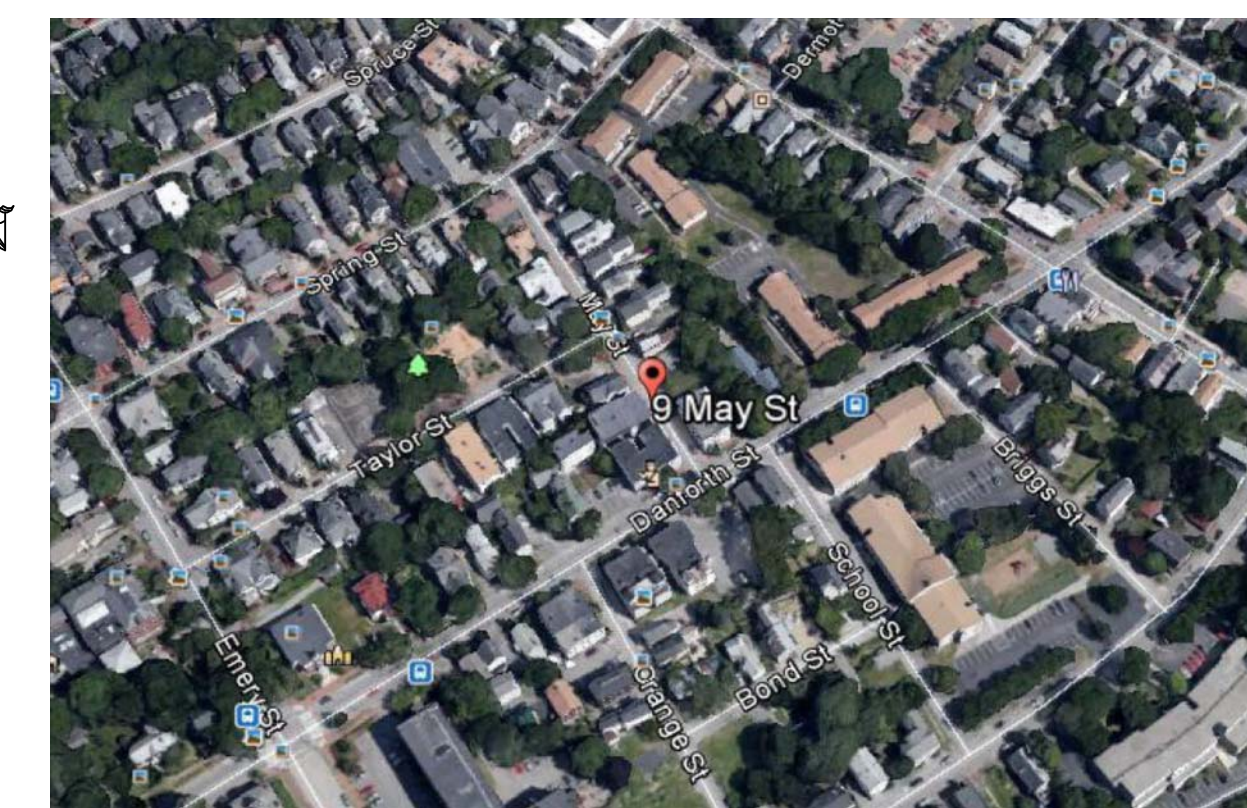
**RISER DETAIL**  
SCALE: N.T.S.



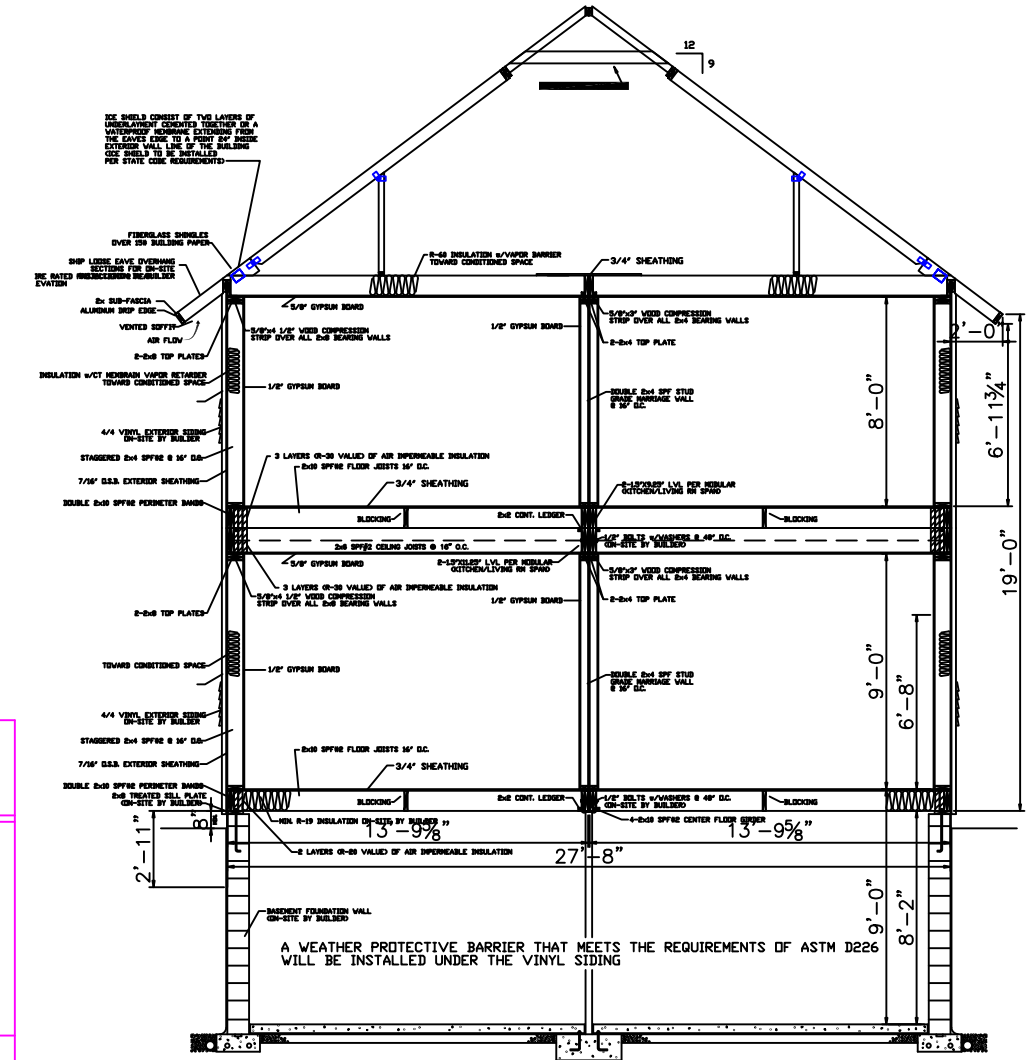
**DESIGN AREA #2**  
**HYD. DESIGN CRITERIA**  
 (NFPA 13R SPRINKLER SYS. WET)  
 LOCATION= KITCHEN / LIVING RM.  
 HAZARD CLASSIFICATION: LIGHT  
 DENSITY= .05 GPM/SQ.FT.  
 AREA OF OPERATION= 442 SQ. FT.  
 HOSE DEMAND: 0 GPM  
 NO. OF SPRINKLERS= 4 MOST DEMANDING  
 SYSTEM DEMAND (INCLUDING HOSE) @  
 BASE OF RISER= 57-GPM 49-PSI  
 SAFETY MARGIN= 6.9 PSI

**2ND FLOOR PLAN**  
TOTAL PROTECTED AREA 1,654 SQ.FT.  
SCALE 1/4" = 1'-0"

**DESIGN AREA #1**  
**HYD. DESIGN CRITERIA**  
 (NFPA 13R SPRINKLER SYS. WET)  
 LOCATION= 2ND FLOOR BED RM.  
 HAZARD CLASSIFICATION: LIGHT  
 DENSITY= .05 GPM/SQ.FT.  
 AREA OF OPERATION= 197 SQ. FT.  
 HOSE DEMAND: 0 GPM  
 NO. OF SPRINKLERS= 2 MOST DEMANDING  
 SYSTEM DEMAND (INCLUDING HOSE) @  
 BASE OF RISER= 33-GPM 41-PSI  
 SAFETY MARGIN= 14.9 PSI



**SITE PLAN**  
SCALE: N.T.S.



**SECTION VIEW**  
SCALE: N.T.S.

- LEGEND:**
- RM PIPE RISER UP
  - DN PIPE RISER DOWN
  - CPVC PIPE (WET)
  - STEEL PIPE (WET)
  - ⊙ HYDRAULIC CALC. POINT
  - ⊙ SYSTEM RISER
  - HYDRAULIC DESIGN AREA

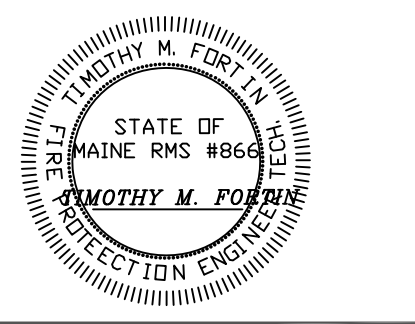
**DESIGN NOTES:**  
 \* POSITION, LOCATION, SPACING, AND USE OF SPRINKLERS AND HANGERS SHALL BE IN ACCORDANCE WITH NFPA 13R 2010 ed.  
 \* HYDRAULIC CALCULATION PROCEDURES HAVE BEEN DONE IN ACCORDANCE WITH NFPA 13R (SEE PLANS FOR LOCATION OF REMOTE AREAS, HYDRAULIC REFERENCE POINTS, AND SYSTEM DEMANDS)  
 \* ALL ELECTRICAL WORK TO BE DONE BY OTHERS.  
 \* DIMENSIONS AND LOCATIONS GIVEN FOR SPRINKLER HEADS AND PIPE MAY VARY TO ACCOMMODATE ACTUAL FIELD CONDITIONS.  
 \* OWNER TO PROVIDE SUFFICIENT HEAT TO PREVENT FREEZING IN WATER FILLED SPRINKLER PIPE AND EQUIPMENT.  
 \* OTHER TRADES TO COORDINATE THEIR WORK WITH SPRINKLER CONTRACTOR.  
 \* REFER TO SPEARS CPVC PLASTIC PIPE INSTALLATION MANUAL FOR GLUE CURING TIME AND HANGER SPACING.

- SPRINKLER HEAD DESCRIPTION:**
- RELIABLE RFC-49  
WHITE CONCEALED PENDENT  
 CITY TEMP (K/FAH)  
 21 165° 4.9
  - RELIABLE RES49  
WHITE PENDENTS  
 CITY TEMP (K/FAH)  
 21 165° 4.9
  - RELIABLE F1RES44 HSW  
HORIZONTAL SIDEWALL  
 CITY TEMP (K/FAH)  
 12 165° 4.9

TOTAL HEADS ON SHEET: 54

SCALE: 1/4" = 1'-0"

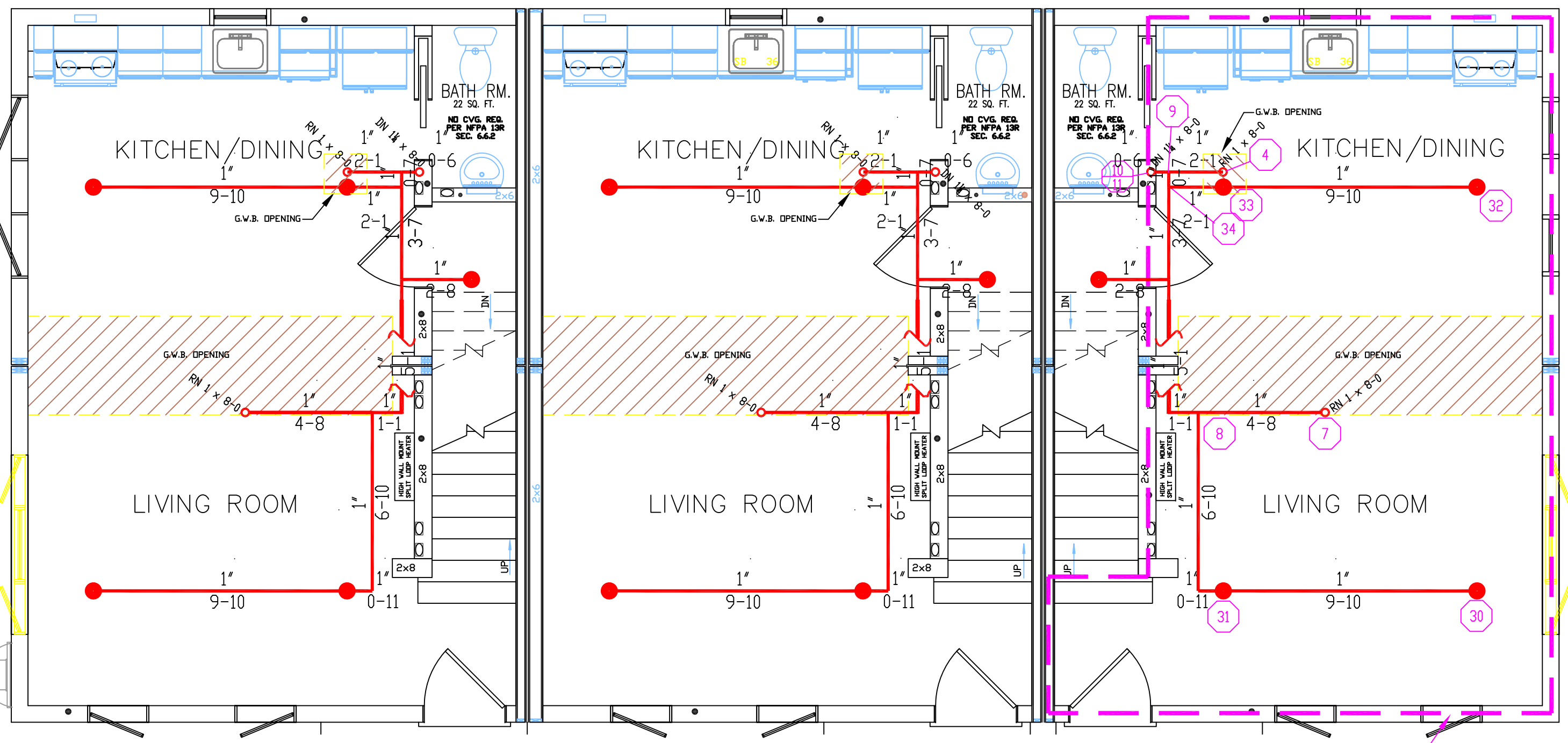
DATE: JAN 13, 2016  
 DESIGNER: TIM FORTIN  
 RMS# 866  
 NICET LEVEL III CERT. # 122193



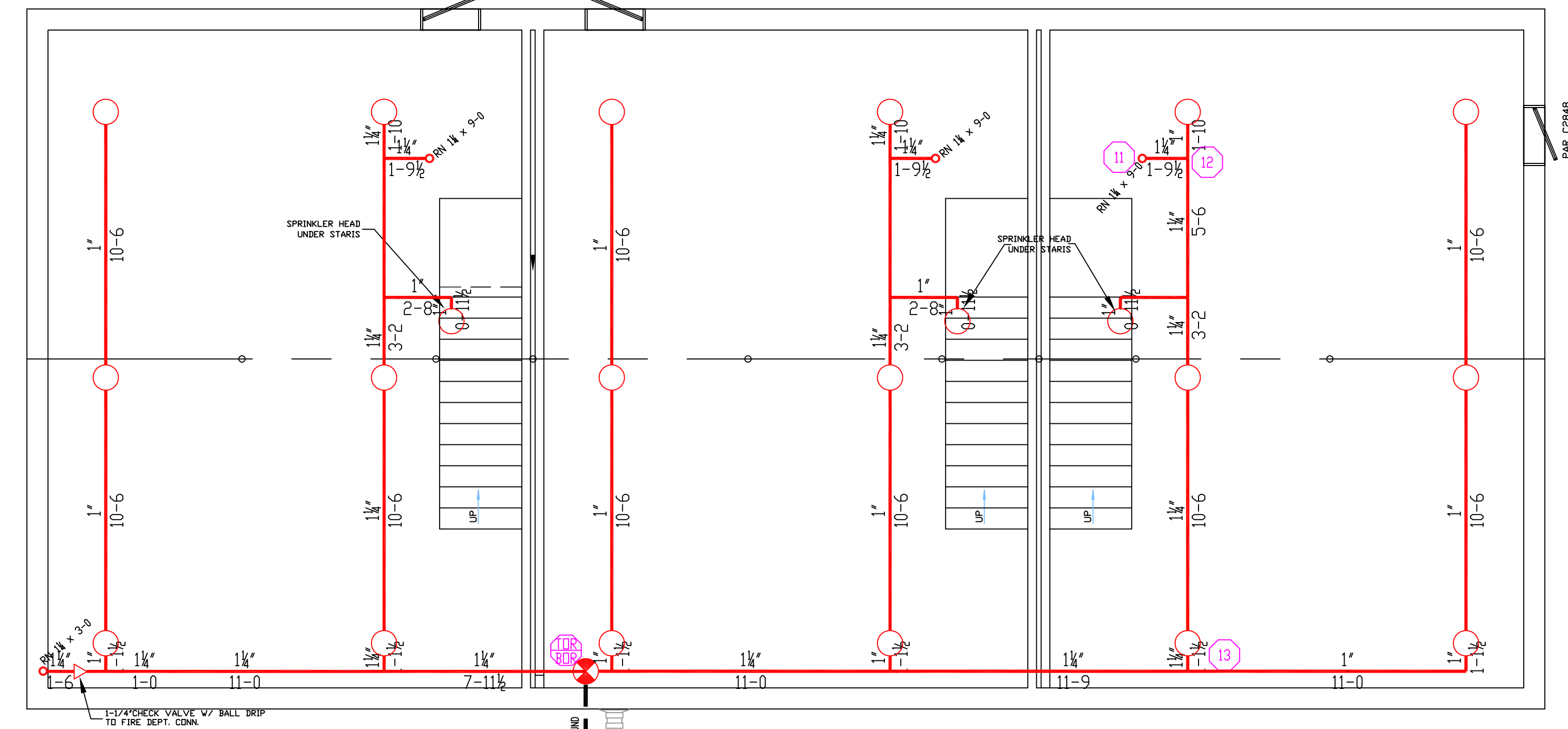
LOCATION: 7-9 MAY ST.  
PORTLAND, ME

DRAWING TITLE:  
**7-9 MAY ST. APARTMENT BLDG.**  
 FIRE PROTECTION PLAN  
 (NFPA 13R SPRINKLER SYS.)

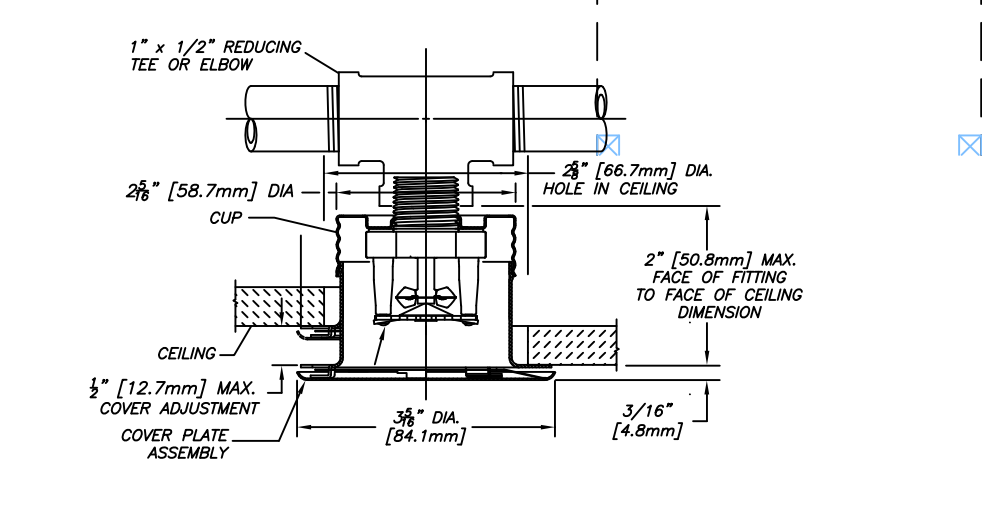
DRAWING NO.: **FP-1**  
DRAWING NO. 1 OF 1



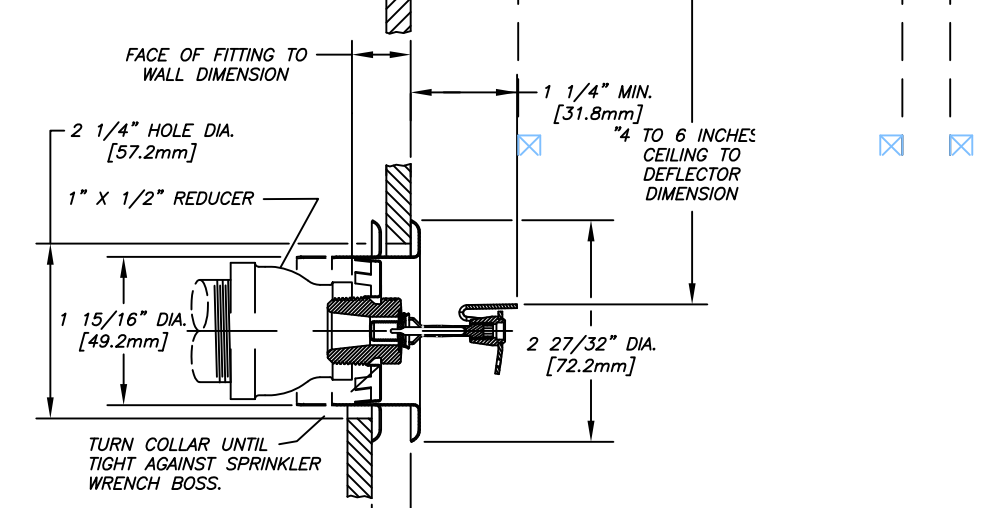
**FIRST FLOOR PLAN**  
TOTAL PROTECTED AREA 1,654 SQ.FT.  
SCALE 1/4" = 1'-0"



**BASEMENT PLAN**  
TOTAL PROTECTED AREA 1,654 SQ.FT.  
SCALE 1/4" = 1'-0"



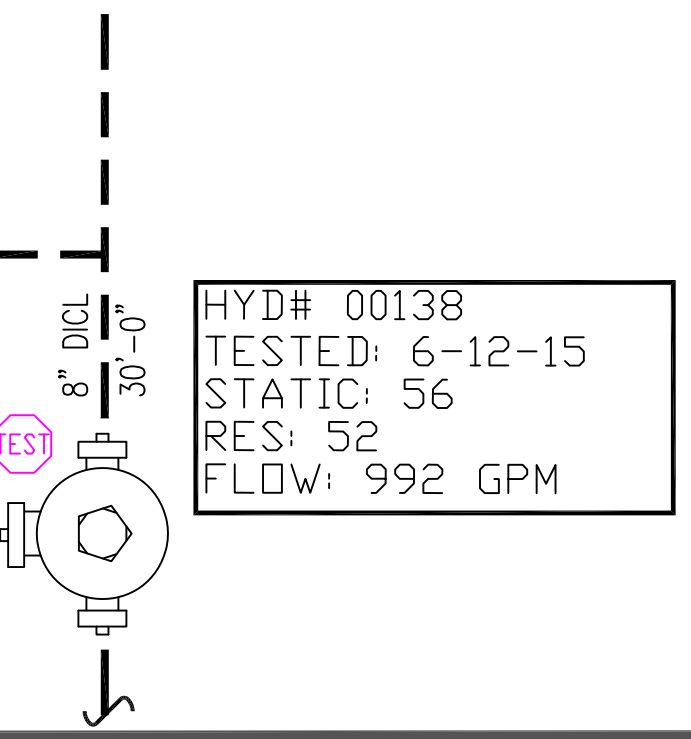
**RFC-49 DETAIL**  
SCALE: N.T.S.



**RES-44 HSW DETAIL**  
SCALE: N.T.S.

MAY ST.  
8" DICH  
150'-0"

DANFORTH ST.



HYD# 00138  
 TESTED: 6-12-15  
 STATIC: 56  
 RES: 52  
 FLOW: 992 GPM