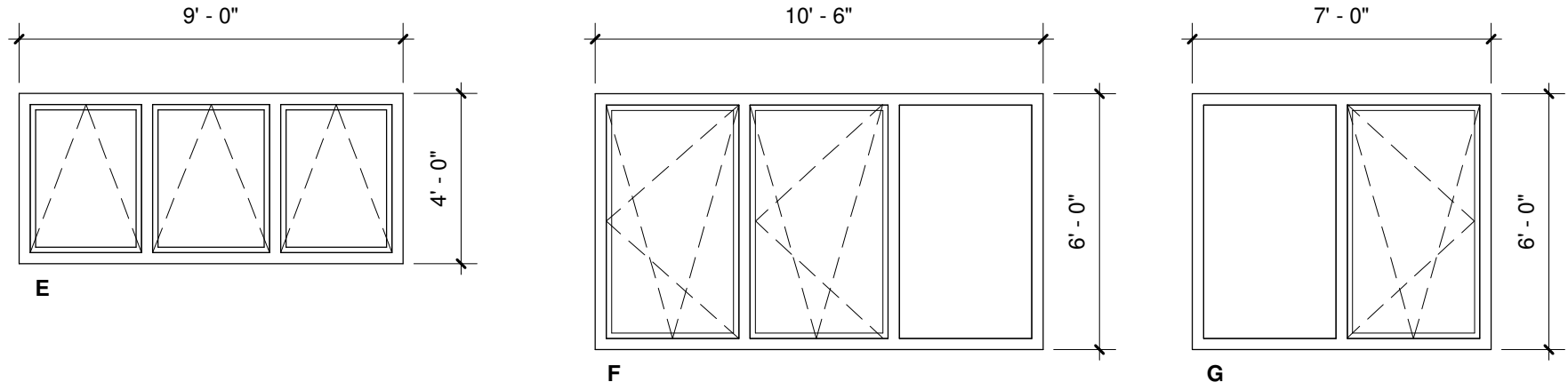
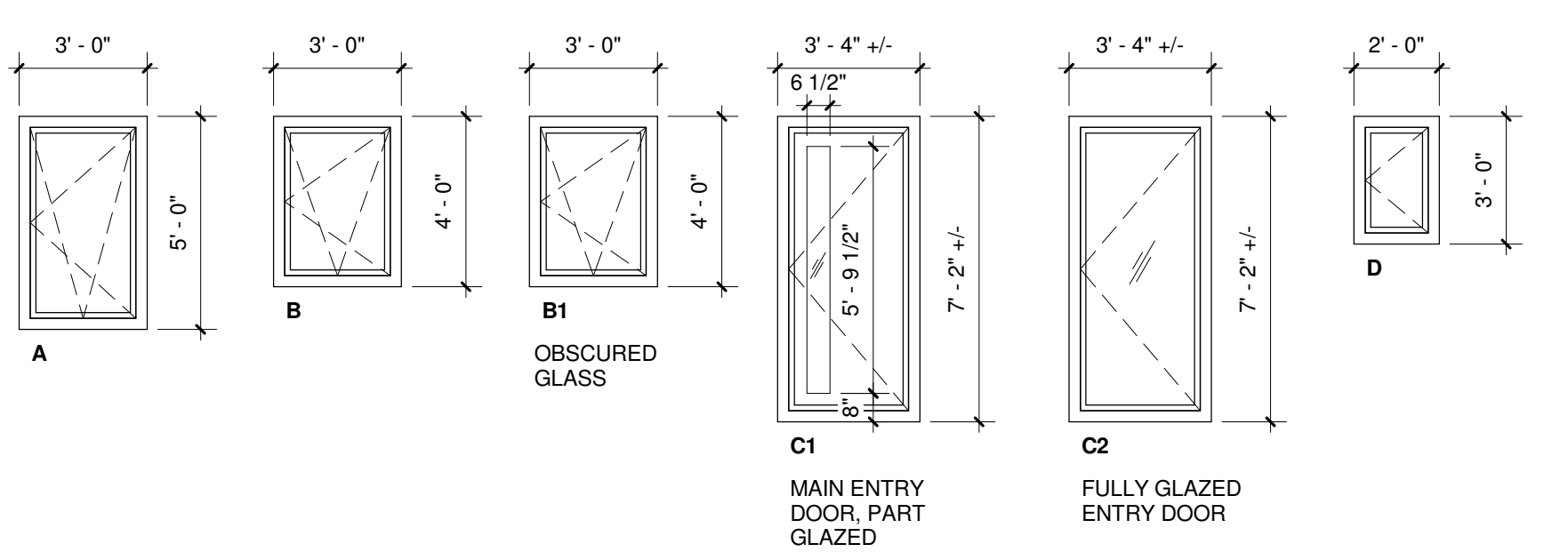
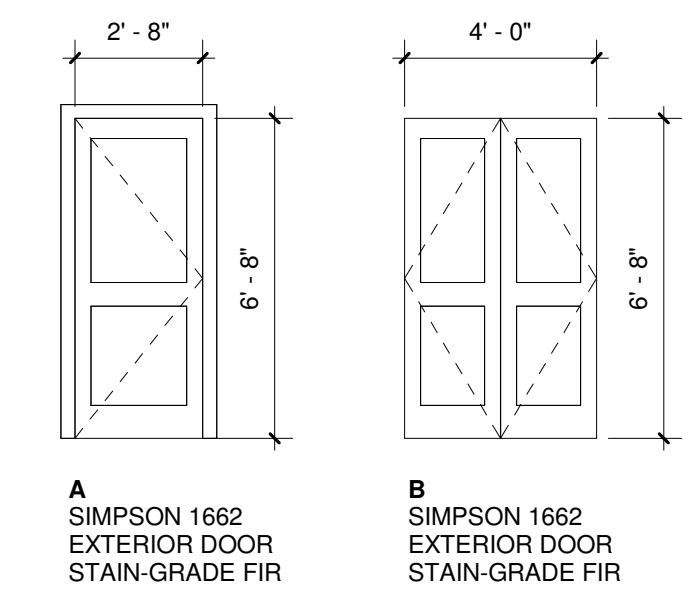


WINDOW SCHEDULE					
TAG	Width	Height	COUNT	OPERATION	REMARKS
A	3' - 0"	5' - 0"	11	TILT TURN	
B	3' - 0"	4' - 0"	7	TILT TURN	
B1	3' - 0"	4' - 0"	3	TILT TURN	OBSCURED GLASS
C1	3' - 4"	7' - 2"	1	ENTRY DOOR	3'-0" X 7'-0" DOOR LEAF
C2	3' - 4"	7' - 2"	2	ENTRY DOOR	3'-0" X 7'-0" DOOR LEAF
D	2' - 0"	3' - 0"	2	TURN ONLY	
E	9' - 0"	4' - 0"	1	TILT ONLY	
F	10' - 6"	6' - 0"	1	TILT TURN	
G	7' - 0"	6' - 0"	1	TILT TURN	

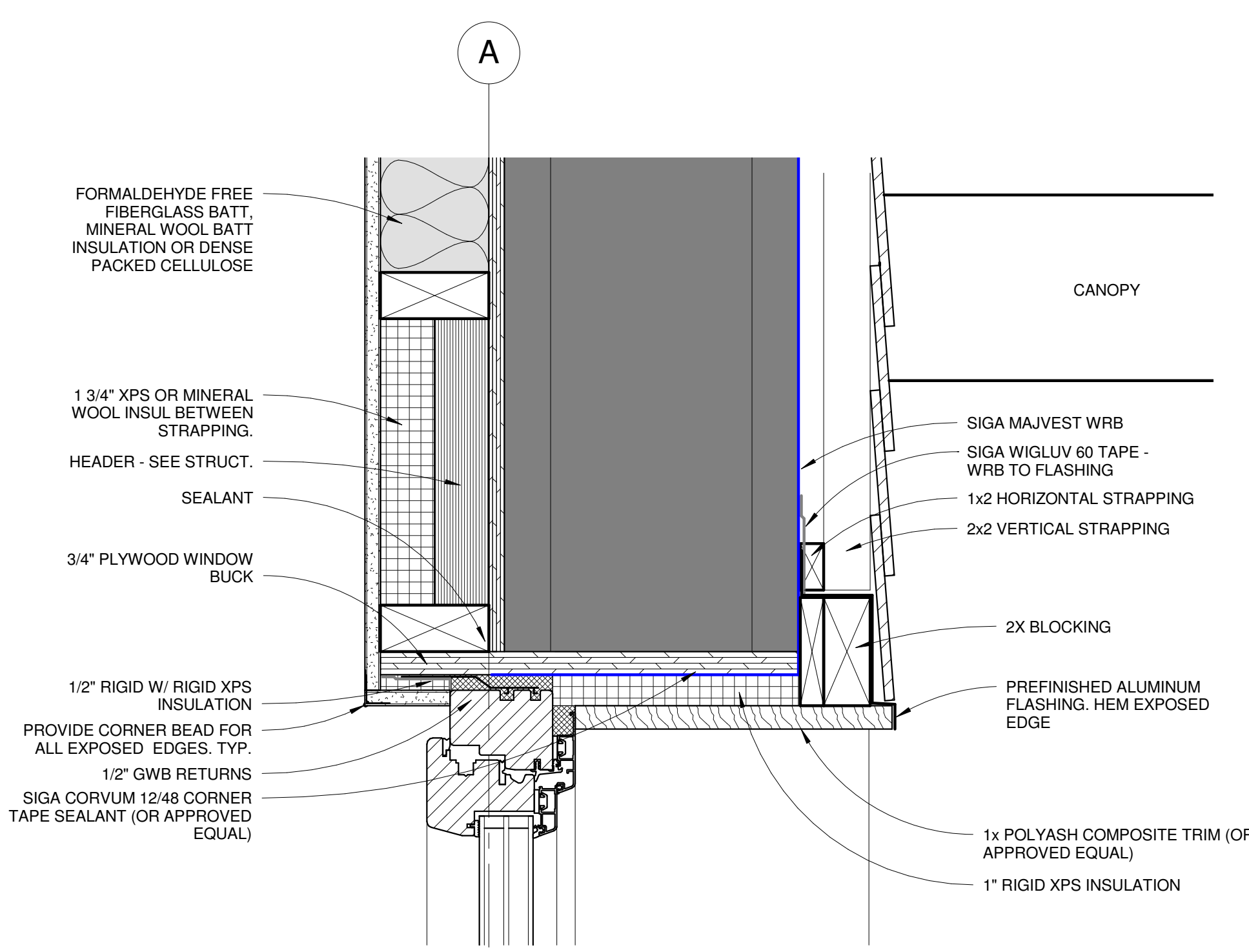


WINDOW LEGEND  
1/4" = 1'-0"

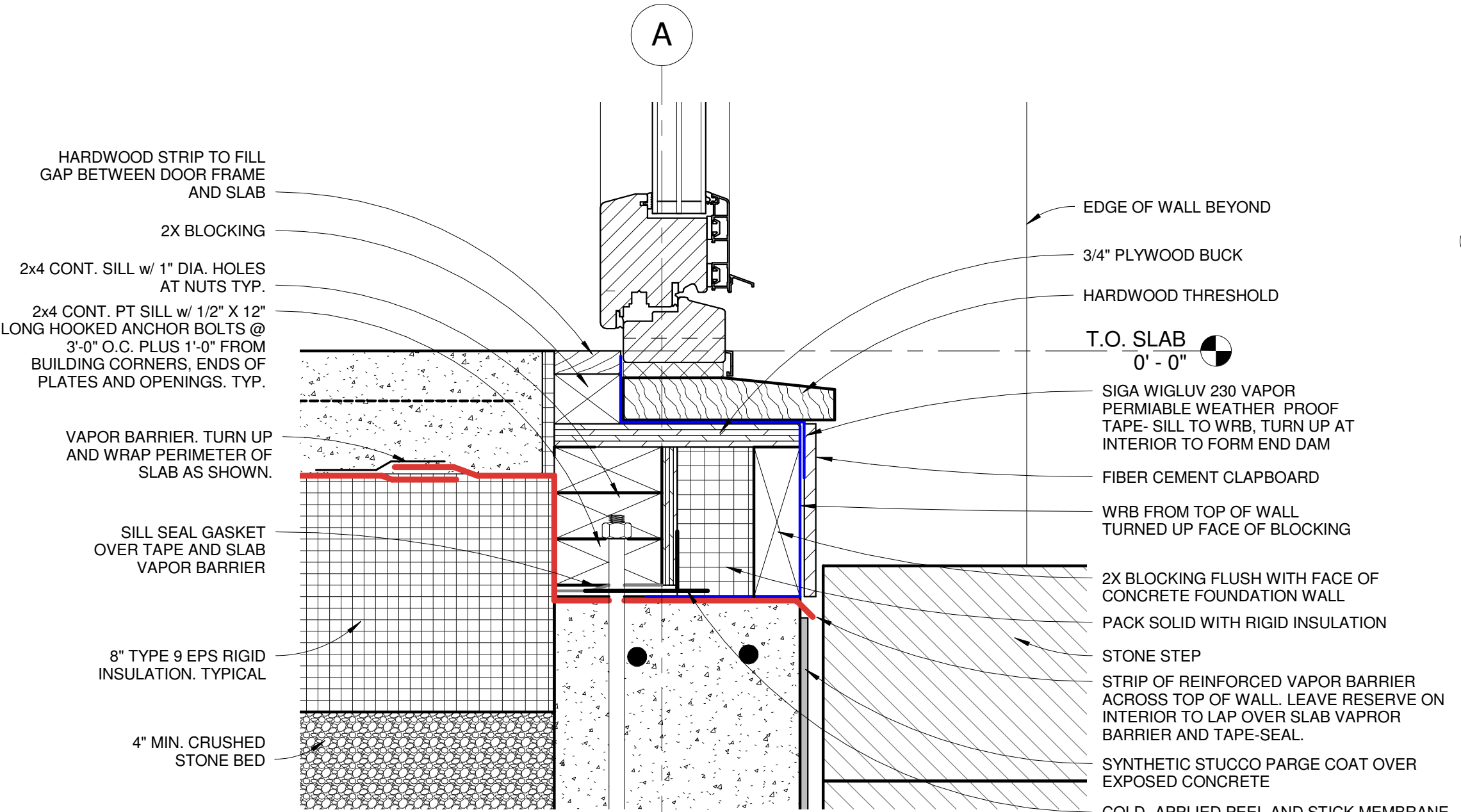
DOOR SCHEDULE						
DOOR #	TYPE	WIDTH	HEIGHT	OPERATION	HARDWARE SET	REMARKS
101	B	4' - 0"	6' - 8"	HINGED DOUBLE	CLOSET	
102	A	2' - 6"	6' - 8"	HINGED	PRIVACY	
201	A	2' - 6"	6' - 8"	POCKET	PASSAGE	
203	A	2' - 6"	6' - 8"	POCKET	PRIVACY	
203A	B	3' - 0"	6' - 8"	HINGED DOUBLE	CLOSET	
204	A	2' - 6"	6' - 8"	POCKET	PASSAGE	
204A	A	2' - 6"	6' - 8"	HINGED	CLOSET	
205	A	2' - 8"	6' - 8"	HINGED	BEDROOM	
206	B	4' - 0"	6' - 8"	HINGED DOUBLE	CLOSET	
207	A	2' - 8"	6' - 8"	HINGED	BEDROOM	
208	B	4' - 0"	6' - 8"	POCKET	CLOSET	
303	A	2' - 6"	6' - 8"	POCKET	BEDROOM	
304	A	2' - 8"	6' - 8"	POCKET	PRIVACY	
305	A	2' - 0"	6' - 8"	HINGED	CLOSET	



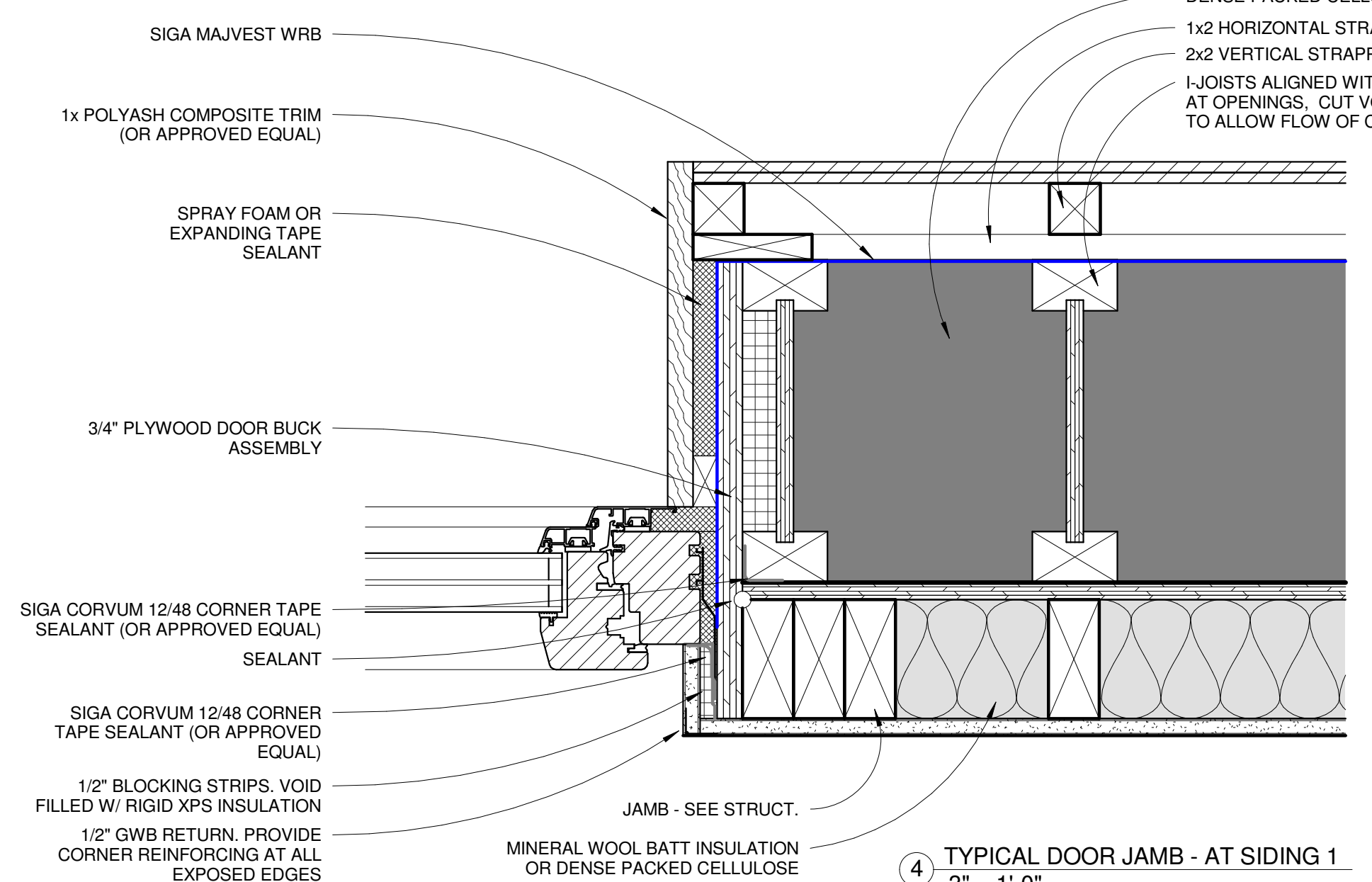
DOOR LEGEND  
1/4" = 1'-0"



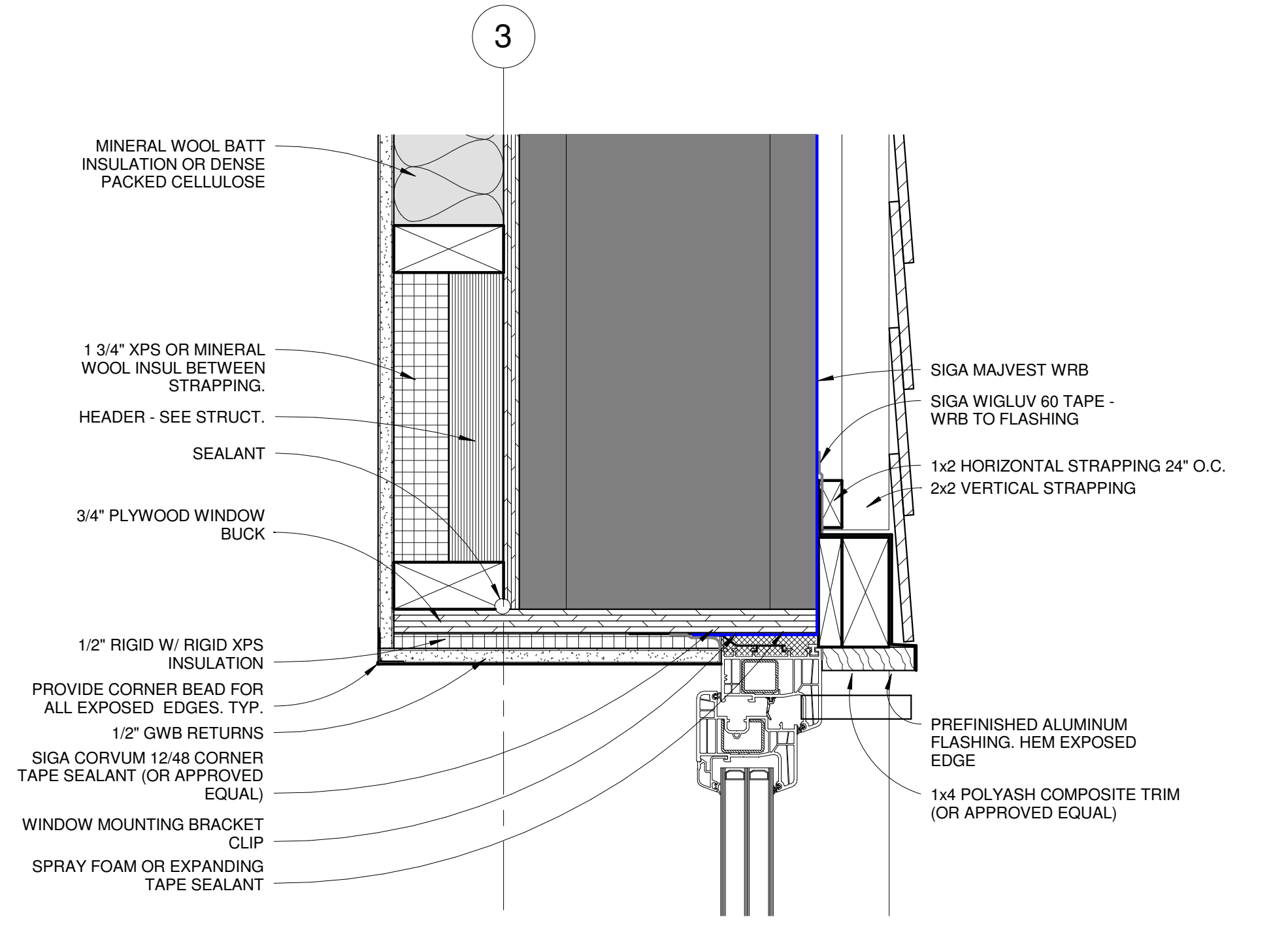
6 EXTERIOR DOOR HEAD - AT SIDING 1  
3" = 1'-0"



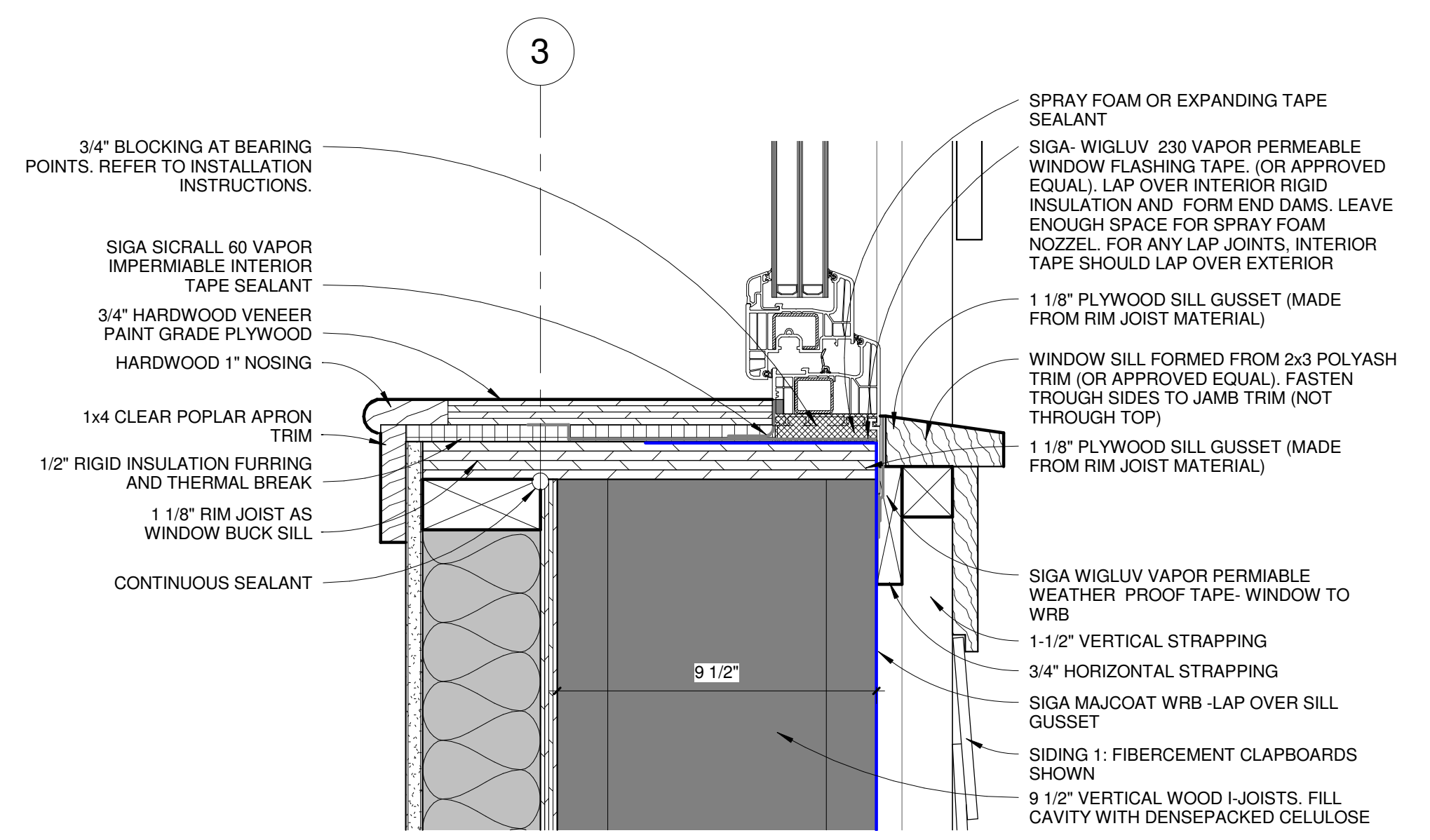
5 EXTERIOR DOOR THRESHOLD  
3" = 1'-0"



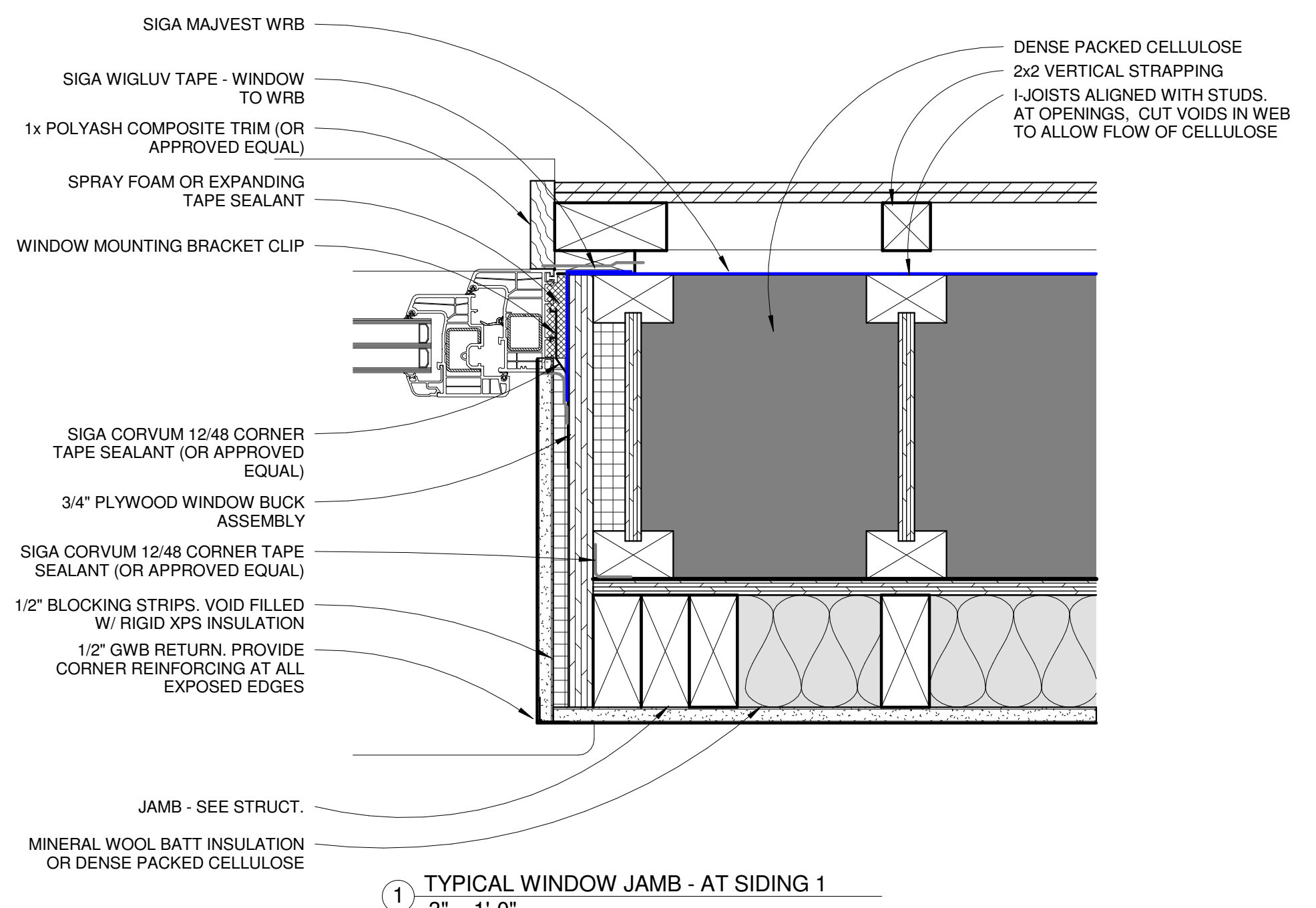
4 TYPICAL DOOR JAMB - AT SIDING 1  
3" = 1'-0"



3 TYPICAL WINDOW HEAD - AT SIDING 1  
3" = 1'-0"



2 TYPICAL WINDOW SILL - AT SIDING 1  
3" = 1'-0"



1 TYPICAL WINDOW JAMB - AT SIDING 1  
3" = 1'-0"