

**OLINS RESIDENCE**  
2 TAYLOR STREET  
PORTLAND, MAINE

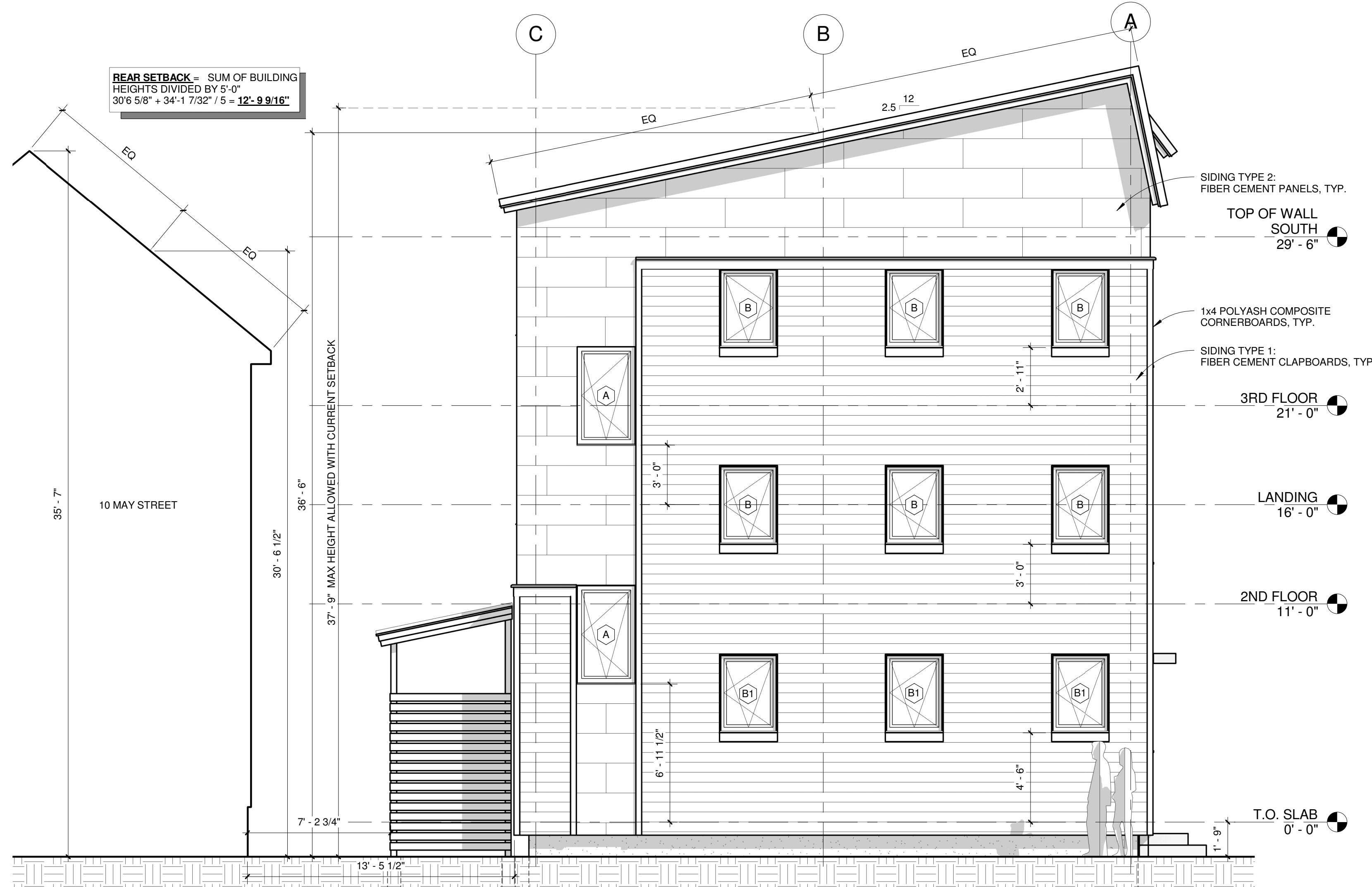
**BR BURN**  
architecture for life  
20 Maple St. Suite 201 Portland, ME 04101 (207) 776-6462

**CONSULTANTS:**  
STRUCTURAL ENGINEER  
L&L STRUCTURAL ENGINEERING  
610 STREET  
SOUTH PORTLAND, ME 04106

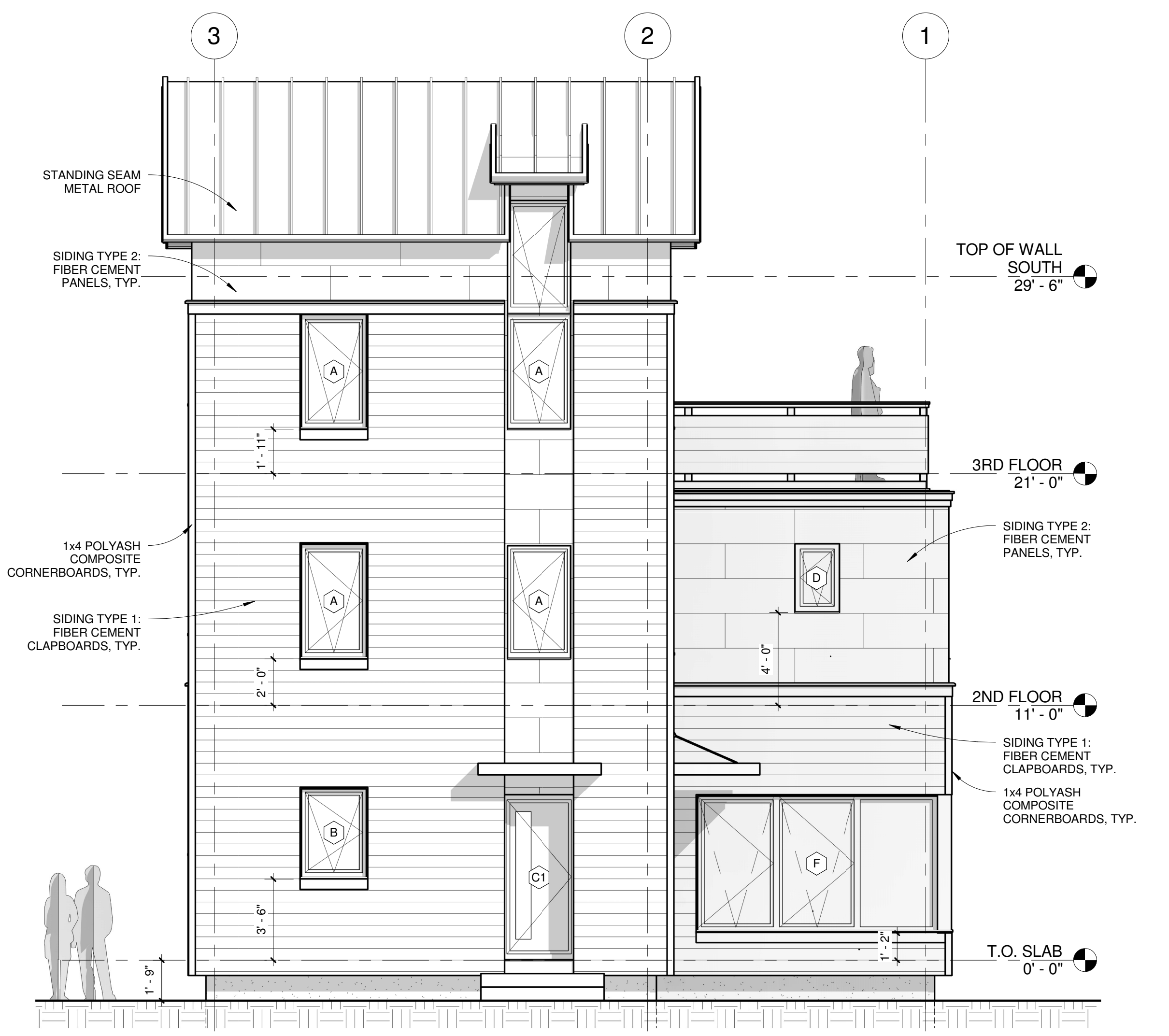
**REVISIONS:**

**ISSUED:** 10/15/14  
**PROJECT No:** 1314  
**DRAWN BY:** CMB  
**CHECKED BY:** ---  
**SHEET TITLE:**  
ELEVATIONS

**A201**



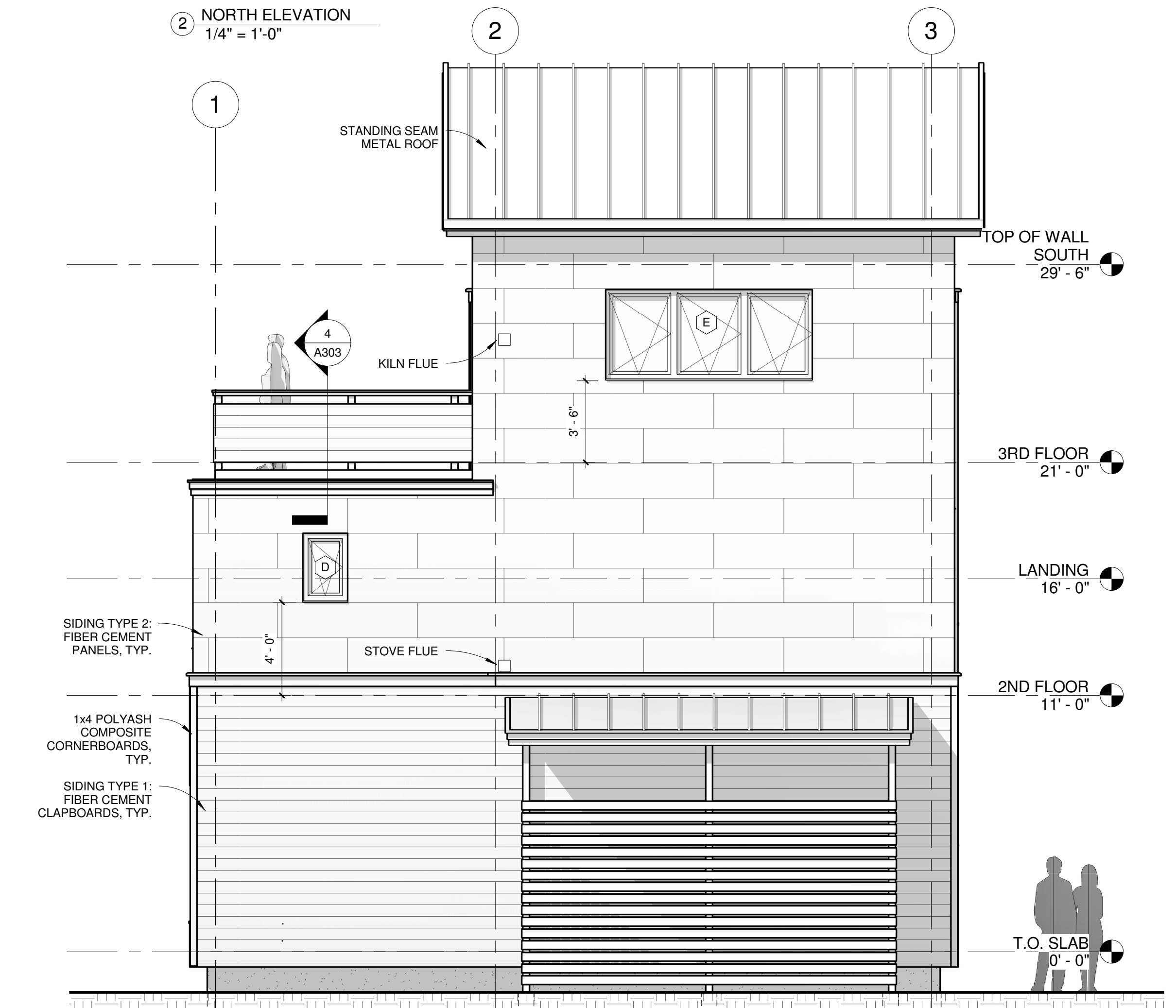
1 EAST ELEVATION  
1/4" = 1'-0"



2 NORTH ELEVATION  
1/4" = 1'-0"



3 WEST ELEVATION  
1/4" = 1'-0"



4 SOUTH ELEVATION  
1/4" = 1'-0"